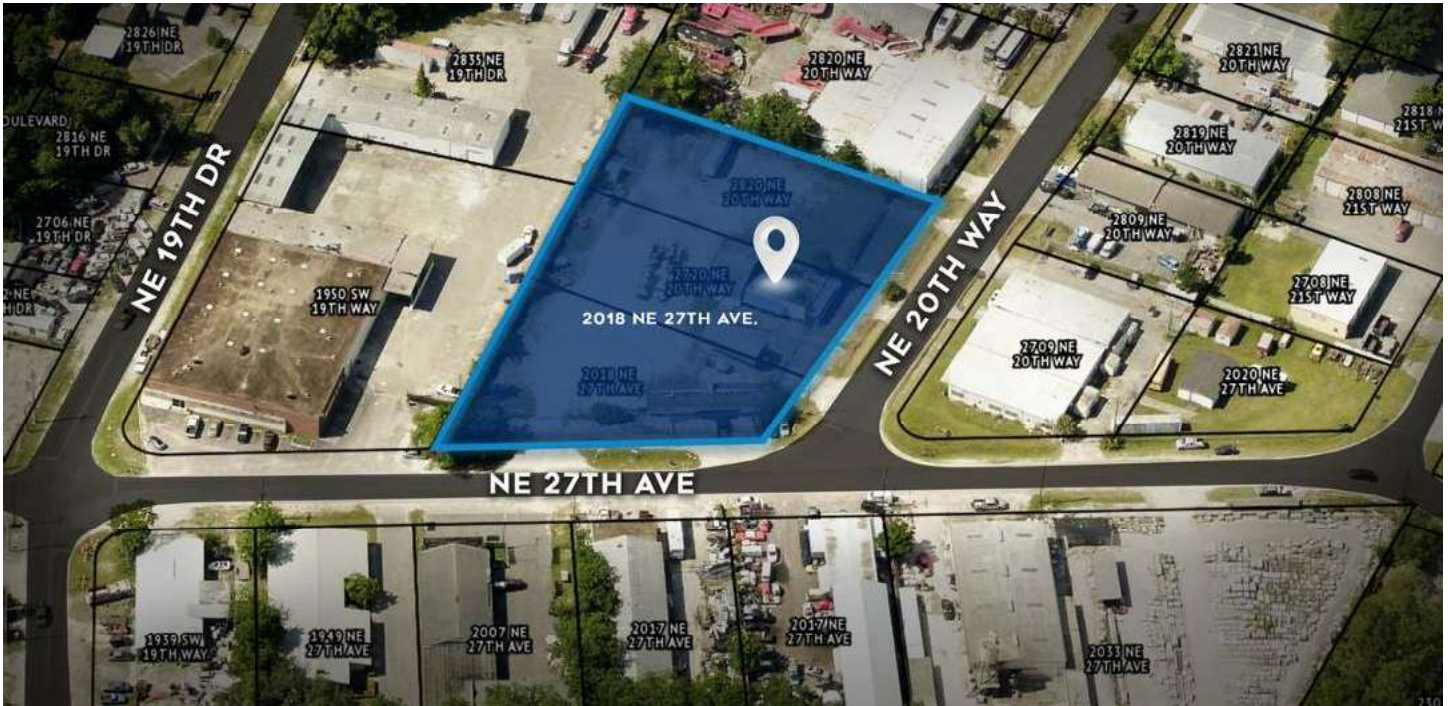


SALE

HUGH EDWARDS INDUSTRIAL PARK PROPERTY

2720 NE 20th Way Gainesville, FL 32609



PROPERTY DESCRIPTION

Three contiguous parcels within Hugh Edwards Industrial Center, located just north of NE 23rd Avenue with quick access to NE Waldo Road and the Gainesville Regional Airport corridor. The assemblage includes two existing office buildings and one vacant industrial lot. I-2 Industrial Zoning. The office building has a total of 1,309 SF and the office warehouse in the back 3,841 SF.

PROPERTY HIGHLIGHTS

- 1.51 acres
- I-2 Zoning
- Two buildings
- Fenced Yard Space

Perry Pursell
(352) 665-9731

Shasta Schoellhorn
(352) 922-0048



**COLDWELL BANKER
COMMERCIAL**
M.M. PARRISH REALTORS

SALE

HUGH EDWARDS INDUSTRIAL PARK PROPERTY

2720 NE 20th Way Gainesville, FL 32609



Perry Pursell
(352) 665-9731

Shasta Schoellhorn
(352) 922-0048

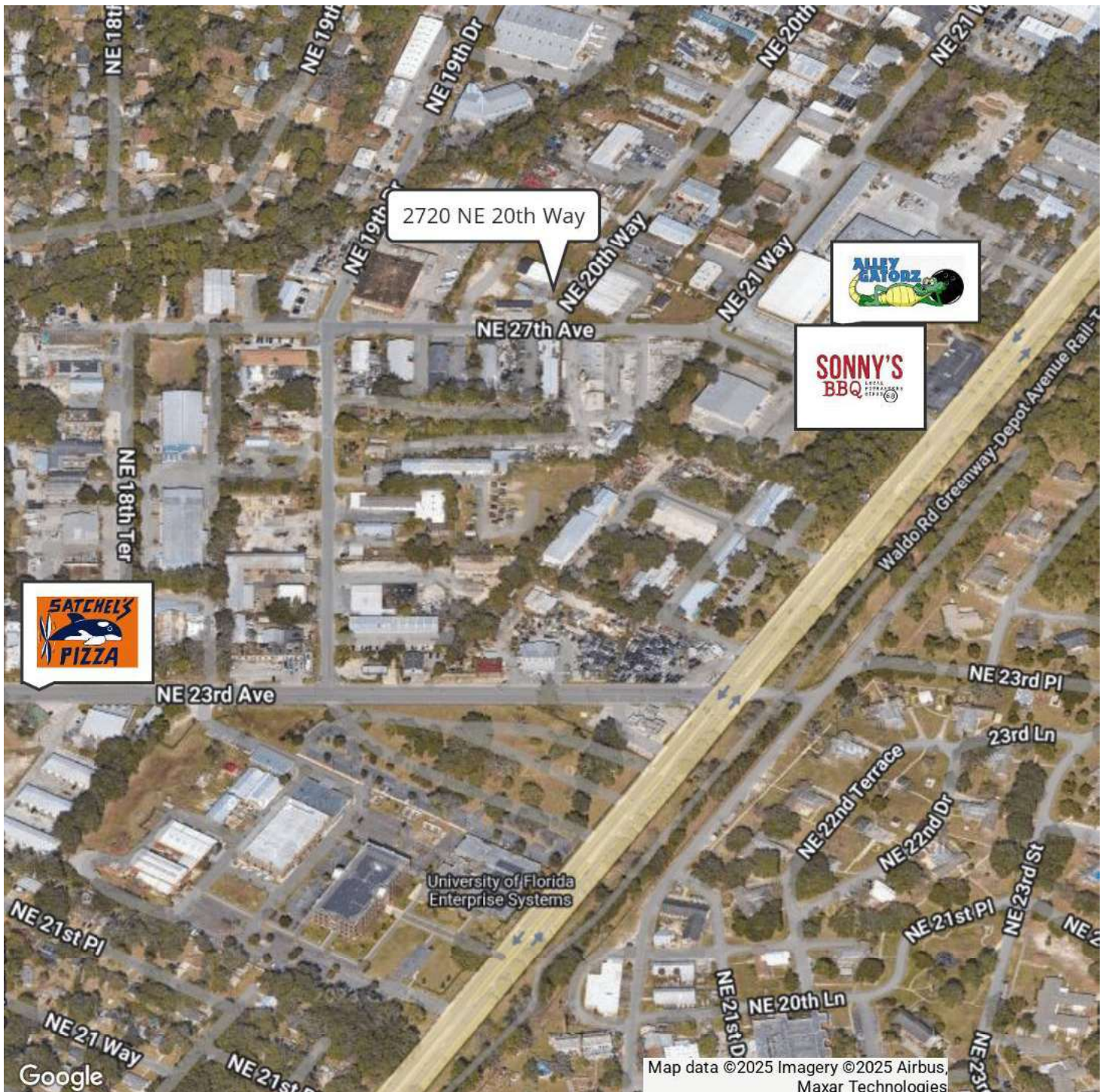


**COLDWELL BANKER
COMMERCIAL**
M.M. PARRISH REALTORS

SALE

HUGH EDWARDS INDUSTRIAL PARK PROPERTY

2720 NE 20th Way Gainesville, FL 32609



Perry Pursell
(352) 665-9731

Shasta Schoellhorn
(352) 922-0048



**COLDWELL BANKER
COMMERCIAL**
M.M. PARRISH REALTORS

SALE

HUGH EDWARDS INDUSTRIAL PARK PROPERTY

2720 NE 20th Way Gainesville, FL 32609



PERRY PURSELL

Commercial Sales Associate

Direct: (352) 665-9731 **Cell:** (352) 665-9731
p2venture@aol.com



SHASTA SCHOELLHORN

Commercial Sales Associate

Direct: (352) 922-0048 **Cell:** (352) 922-0048
shasta@mmparrish.com

FL #259506759

Perry Pursell
(352) 665-9731

Shasta Schoellhorn
(352) 922-0048



COLDWELL BANKER
COMMERCIAL
M.M. PARRISH REALTORS