

2401 1ST AVE NORTH

2401 1st Ave N, Birmingham, AL 35203

MIXED USE REDEVELOPMENT PROPERTY FOR SALE



PROPERTY DESCRIPTION

Historic Redevelopment Opportunity at the corner of 1st Ave North and 24th St. Former home of Batterton Coffee and Royal Cup Coffee.

PROPERTY HIGHLIGHTS

- Built in 1924.
- Zoned B-4.
- Masonry and reinforced concrete construction.
- Massive Windows on three sides.
- Freight Elevator.
- 5 dedicated on site parking spaces behind the building.

JOHN TALLY

Principal and Qualifying Broker
205.757.0237
john@tallybhm.com

OFFERING SUMMARY

Sale Price:	\$1,295,000
Lot Size:	9,112 SF
Building Size:	23,700 SF

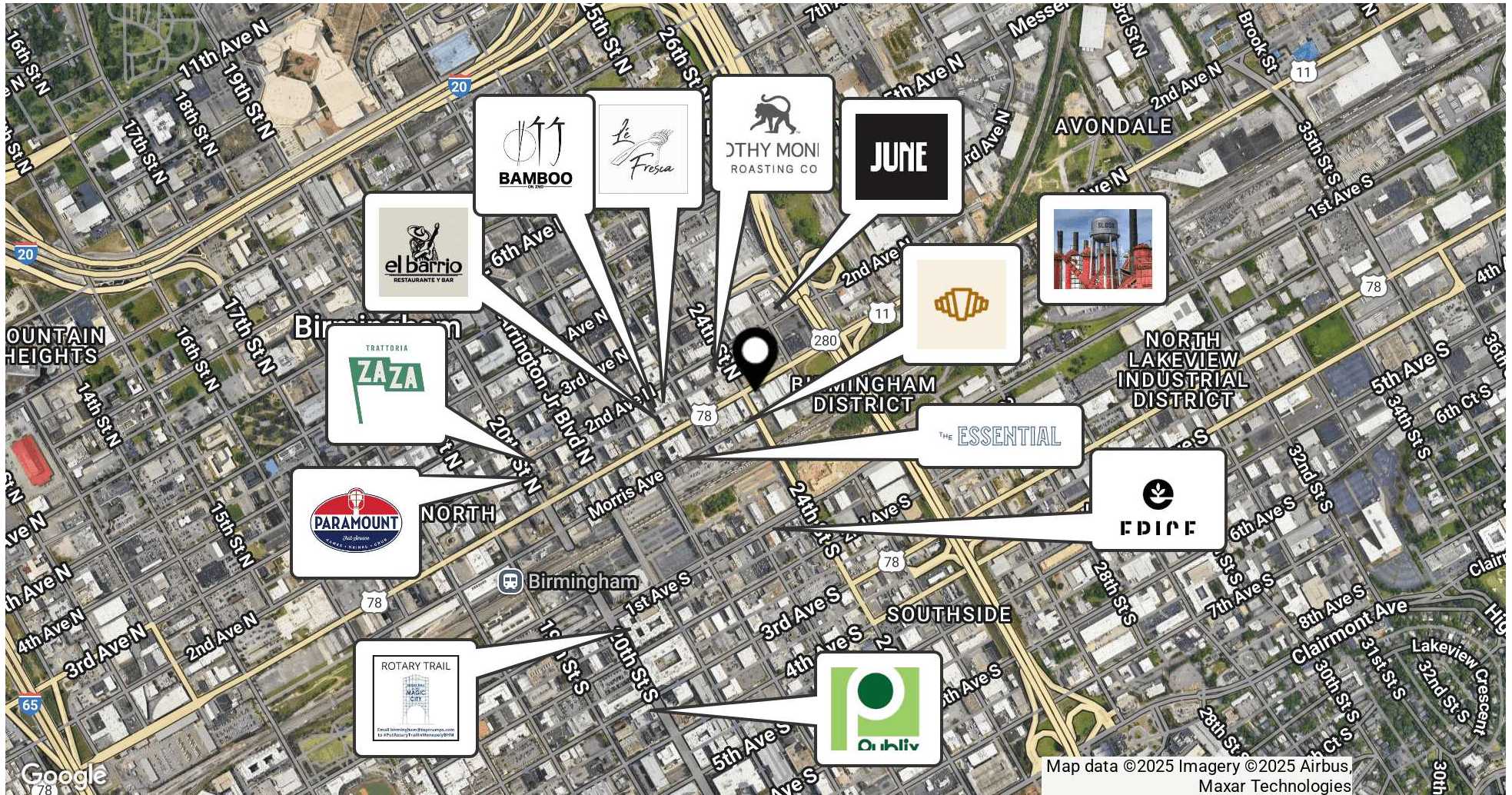
DEMOGRAPHICS	0.5 MILES	1 MILE	2 MILES
Total Households	1,443	3,769	17,836
Total Population	2,555	7,176	36,886
Average HH Income	\$68,198	\$56,287	\$71,131

Tally

2401 1ST AVE NORTH

2401 1st Ave N, Birmingham, AL 35203

MIXED USE REDEVELOPMENT PROPERTY FOR SALE



JOHN TALLY

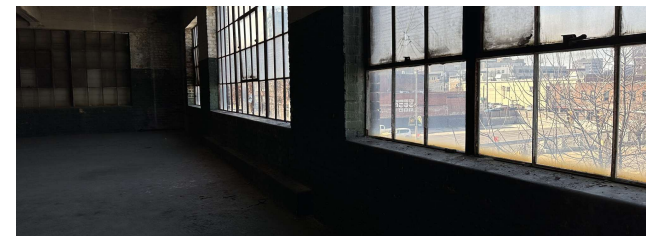
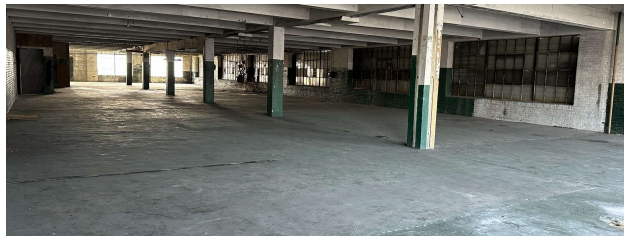
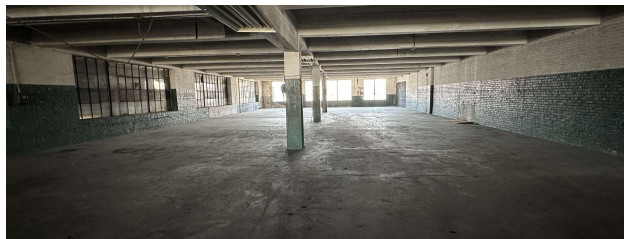
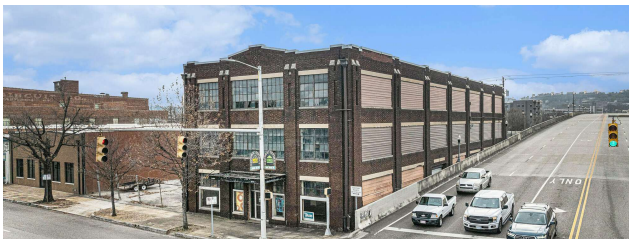
Principal and Qualifying Broker
205.757.0237
john@tallybhm.com

Tally

2401 1ST AVE NORTH

2401 1st Ave N, Birmingham, AL 35203

MIXED USE REDEVELOPMENT PROPERTY FOR SALE



JOHN TALLY

Principal and Qualifying Broker
205.757.0237
john@tallybhm.com

Tally

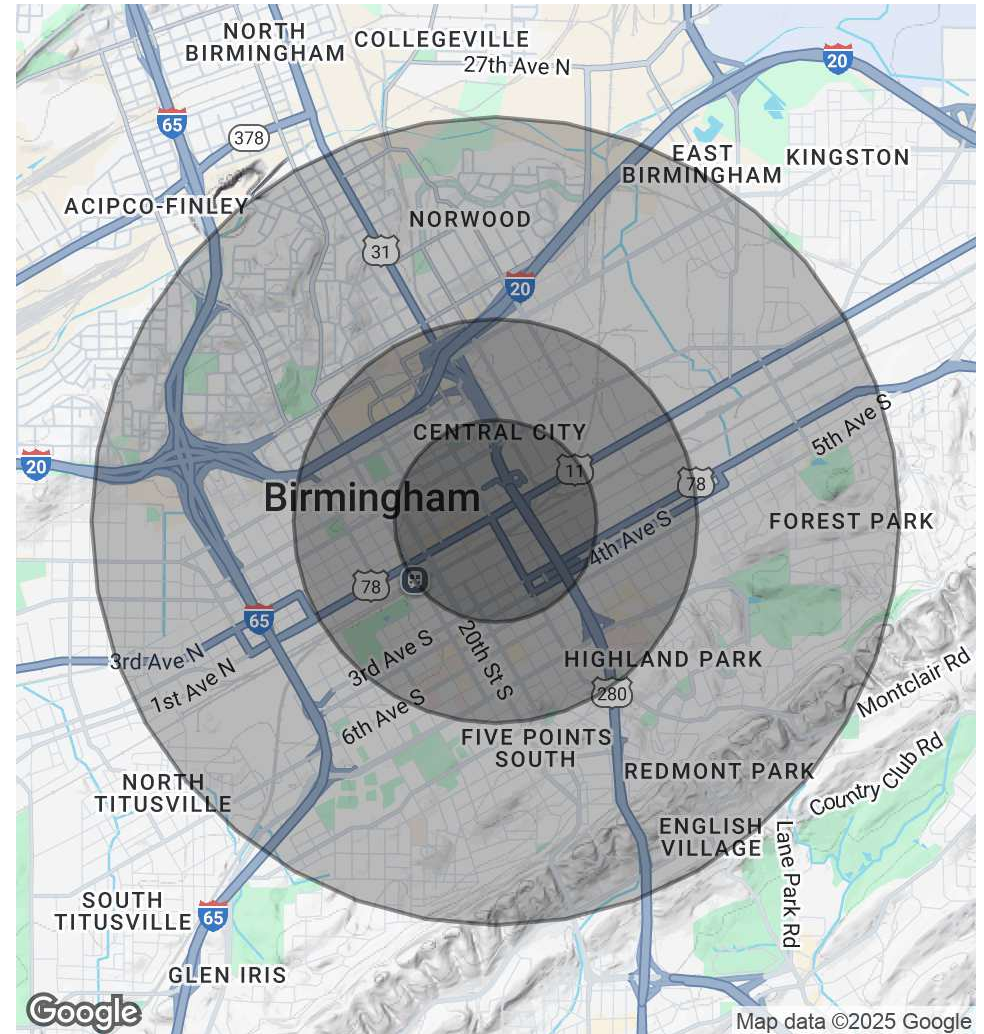
2401 1ST AVE NORTH

2401 1st Ave N, Birmingham, AL 35203

MIXED USE REDEVELOPMENT PROPERTY FOR SALE

POPULATION	0.5 MILES	1 MILE	2 MILES
Total Population	2,555	7,176	36,886
Average Age	38	36	38
Average Age (Male)	37	35	37
Average Age (Female)	40	37	39
HOUSEHOLDS & INCOME	0.5 MILES	1 MILE	2 MILES
Total Households	1,443	3,769	17,836
# of Persons per HH	1.8	1.9	2.1
Average HH Income	\$68,198	\$56,287	\$71,131
Average House Value	\$342,974	\$310,627	\$341,504

Demographics data derived from AlphaMap



JOHN TALLY

Principal and Qualifying Broker
205.757.0237
john@tallybhm.com

Tally