



Condo Size:
±3,726 SF

Sale Price:
\$1,750,000

GILBERT TOWNSHIP VILLAS

1757 E Baseline Rd, Bldg 6, Ste 123 & 124 | Gilbert, AZ 85223

Professional Office Condo
**AVAILABLE
FOR SALE**

For More Information, Please Contact:

Paul Woods
D 480.420.7460
pwoods@cpiaz.com

Rex Griswold
M 480.244.7222
rgriswold@cpiaz.com

 **COMMERCIAL PROPERTIES INC.**
Locally Owned. Globally Connected. CORFAC INTERNATIONAL

TEMPE: 2323 W University Drive, Tempe, AZ 85281 | 480.966.2301
SCOTTSDALE: 8767 E Via de Commercio, Suite 101, Scottsdale, AZ 85258 | www.cpiaz.com

The information contained herein has been obtained from various sources. We have no reason to doubt its accuracy; however, J & J Commercial Properties, Inc. has not verified such information and makes no guarantee, warranty or representation about such information. The prospective buyer or lessee should independently verify all dimensions, specifications, floor plans, and all information prior to the lease or purchase of the property. All offerings are subject to prior sale, lease, or withdrawal from the market without prior notice. 03 23 26



Turn-Key Professional Office Condo Available For Sale

Situated within the **Gilbert Township Villas**, this professional office condo presents a turnkey opportunity for a variety of businesses in the East Valley. Available for an owner/user to purchase, the suite is thoughtfully configured to support daily business operations and client flow, making it ideal for general office use with potential for medical configuration. Located directly on E Baseline Rd near the US-60, the property enjoys excellent visibility and accessibility for clients and staff throughout the Gilbert and Mesa area. Surrounded by established retail and dining amenities, this site offers the perfect balance of professional convenience and strategic location.



PROPERTY SUMMARY

Address	1757 E Baseline Rd Bldg 6, Ste 123 & 124 Gilbert, AZ 85233
Condo Size	±3,726 SF
Year Built	2003
Parcel	314-01-431 & 314-01-432
Zoning	NO (Neighborhood Office)
Tenancy	Single
Sale Price	\$1,750,000

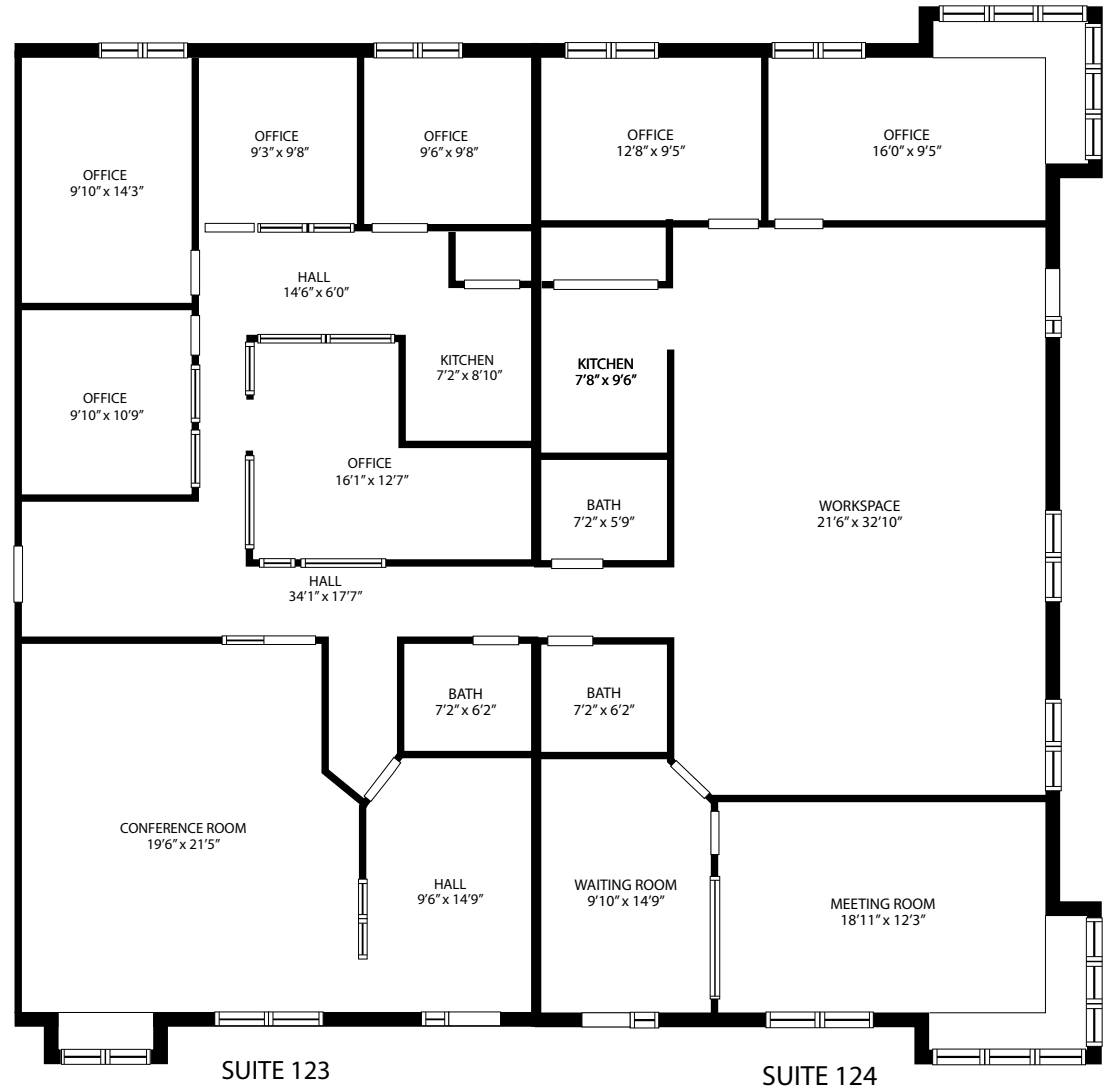
The information contained herein has been obtained from various sources. We have no reason to doubt its accuracy; however, J & J Commercial Properties, Inc. has not verified such information and makes no guarantee, warranty or representation about such information. The prospective buyer or lessee should independently verify all dimensions, specifications, floor plans, and all information prior to the lease or purchase of the property. All offerings are subject to prior sale, lease, or withdrawal from the market without prior notice. 03 23 26

Suite 123 & 124

±3,726 SF | \$1,750,000

Layout Includes:

Reception, 7 Offices, 2 Conference Rooms,
 3 Restrooms, 2 Kitchens, and Multiple
 Bull Pen/Open Office Spaces.



For More Information, Please Contact:

Paul Woods

D 480.420.7460

pwoods@cpiaz.com

Rex Griswold

M 480.244.7222

rgriswold@cpiaz.com



COMMERCIAL PROPERTIES INC.

Locally Owned. Globally Connected. CORFAC INTERNATIONAL

TEMPE: 2323 W University Drive, Tempe, AZ 85281 | 480.966.2301
 SCOTTSDALE: 8767 E Via de Commercio, Suite 101, Scottsdale, AZ 85258 | www.cpiaz.com



For More Information, Please Contact:

Paul Woods

D 480.420.7460

pwoods@cpiaz.com

Rex Griswold

M 480.244.7222

rgriswold@cpiaz.com



COMMERCIAL PROPERTIES INC.

Locally Owned. Globally Connected. CORFAC INTERNATIONAL

TEMPE: 2323 W University Drive, Tempe, AZ 85281 | 480.966.2301
SCOTTSDALE: 8767 E Via de Commercio, Suite 101, Scottsdale, AZ 85258 | www.cpiaz.com

The information contained herein has been obtained from various sources. We have no reason to doubt its accuracy; however, J & J Commercial Properties, Inc. has not verified such information and makes no guarantee, warranty or representation about such information. The prospective buyer or lessee should independently verify all dimensions, specifications, floor plans, and all information prior to the lease or purchase of the property. All offerings are subject to prior sale, lease, or withdrawal from the market without prior notice.



For More Information, Please Contact:

Paul Woods
 D 480.420.7460
 pwoods@cpiaz.com

Rex Griswold
 M 480.244.7222
 rgriswold@cpiaz.com