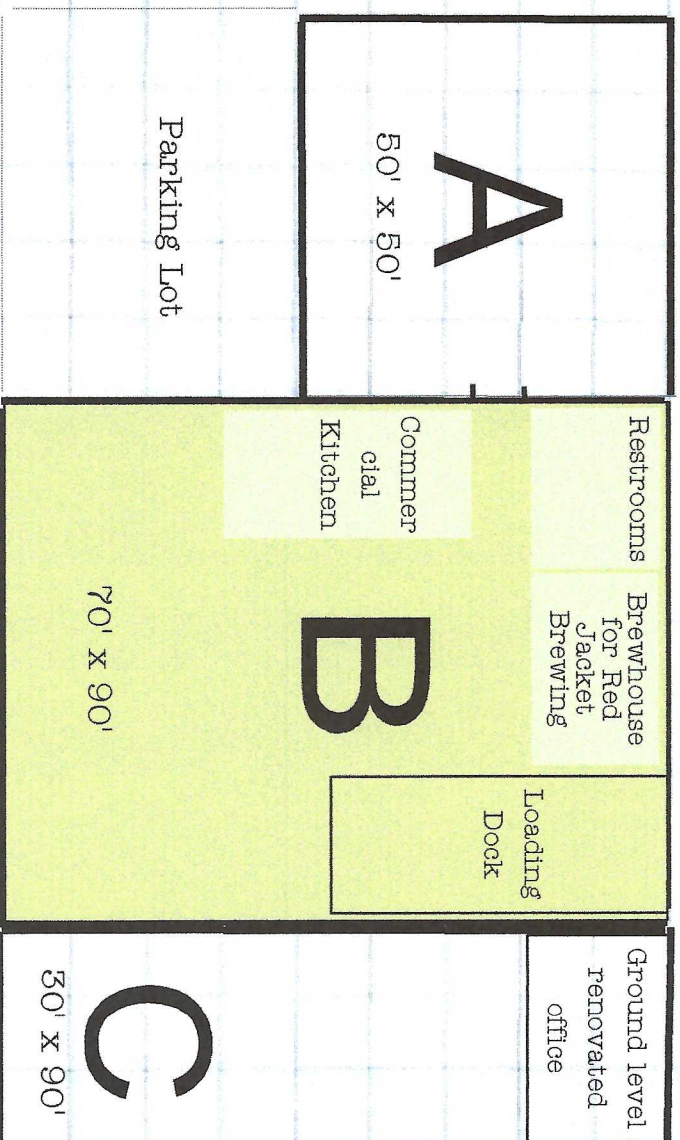


Footprint of Buildings

Sixth Street

Oak Street



1 grid square = 10 feet

C. Obenhof's Office Building

Foundation dates back to 1880's. Was originally Obenhof's Ice Cream. In the 30's or 40's it became the Jilbert's Dairy Office. A portion of the main floor had collapsed into the basement in the center of the building. There are intact foundation walls that prevent this from effecting the front and rear of the structure. This is a two story structure with Jacobsville sandstone exterior walls. The Sixth Street section has an office area that was renovated in 2007. The interior ground floor collapse was decked over with new support beams and posts installed thereby stabilizing the structure in February 2009. The roof is scheduled to be recovered with rolled rubber roofing in July 2009. We have applied for a Residential Rehabilitation Grant to assist in converting the second floor to a working studio/residence.

A. Michigan House Building

Built 1905, 50'x50' footprint. Three floors, full basement. Rubber roof installed 2001. Kitchen and restrooms electrical and plumbing installed new 1995. Residence electric and plumbing on 2nd and 3rd floors circa 1970. Note: the kitchen and restrooms are located in the adjoining Jilberts warehouse. The kitchen produces an average of 30 gallons of raw vegetable waste per week. 5 gallons of spent coffee grounds per week. 80 gallons of spent grain with each brew cycle (approximately 2 x monthly).

Alley

B. Jilbert's Warehouse Building

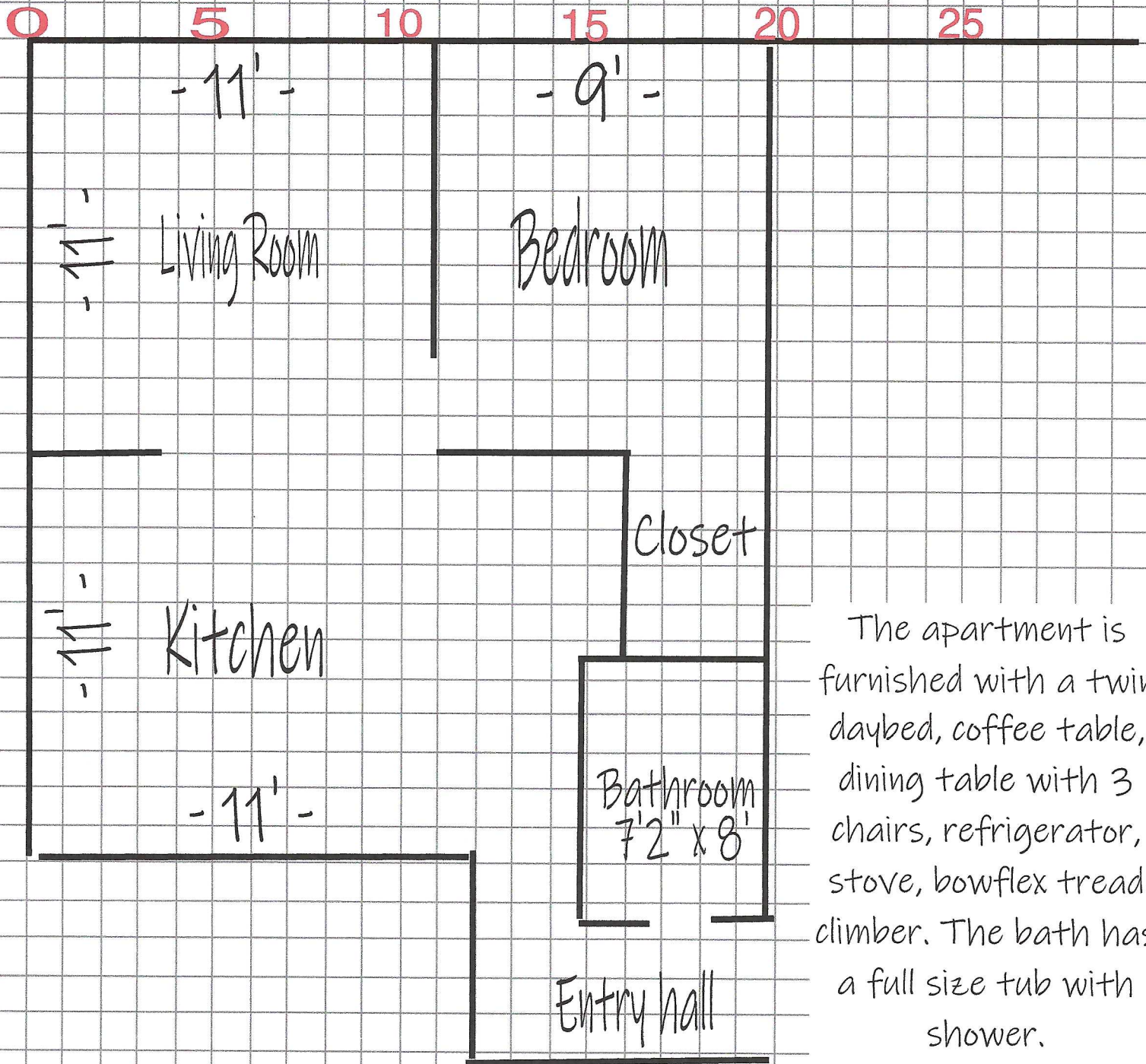
Built 1940's? One story warehouse with loading dock, steel beam roof with tar/gravel roofing. The restrooms and commercial kitchen for the Michigan House Building are located in this warehouse. They were installed in 1995. A wood boiler that services the domestic water and ground floor heat for the Michigan House Cafe was installed in the warehouse in 2006. The roof was resurfaced with tar in 2008. Red Jacket Brewing installed a brewhouse along the Sixth Street facade in 2008/2009 - now operational.

June 21, 2009

Mamie

Mamie - Third floor north west corner

One bedroom apartment approx. 20' x 25'

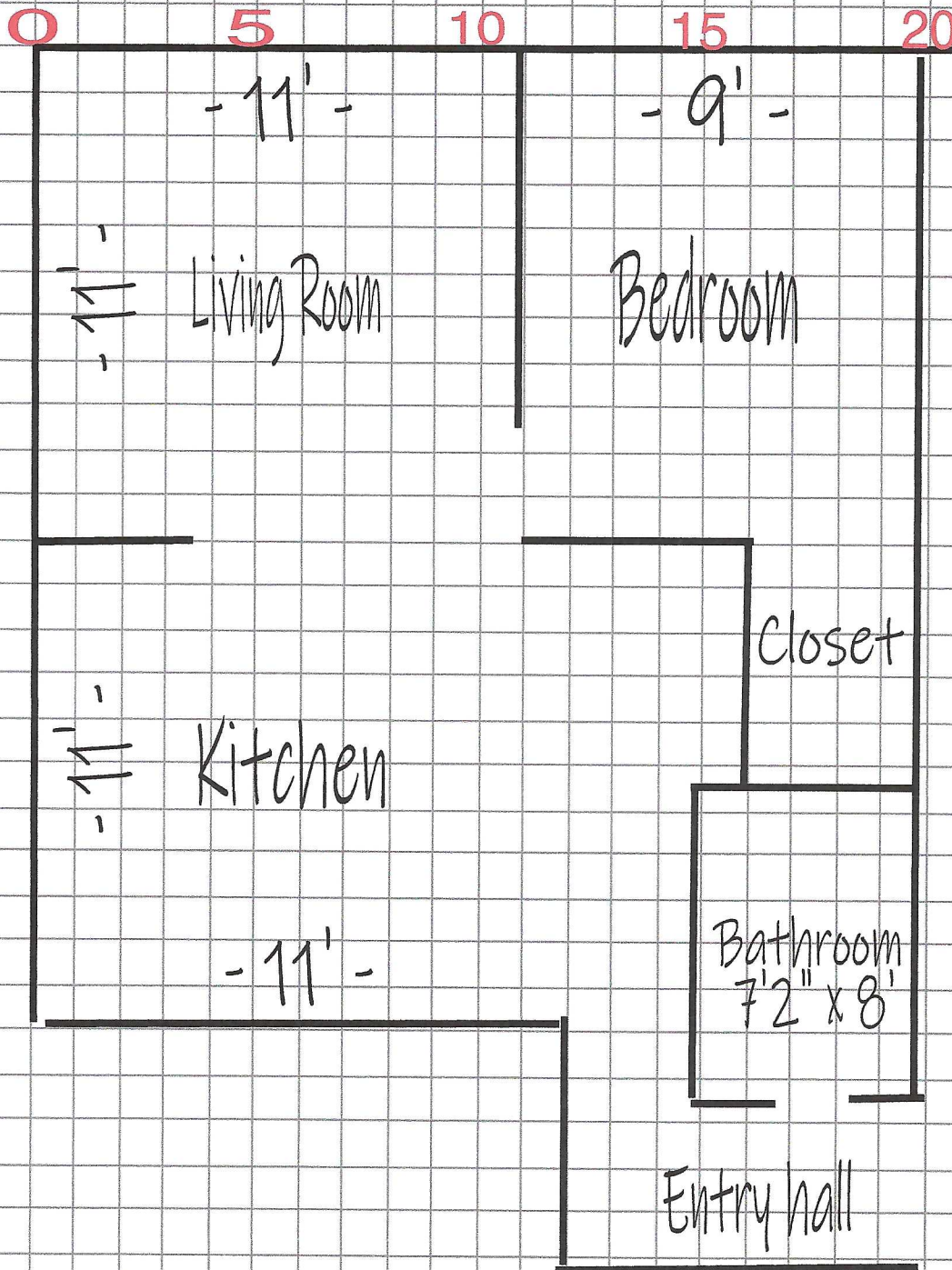


The apartment is furnished with a twin daybed, coffee table, dining table with 3 chairs, refrigerator, stove, bowflex tread climber. The bath has a full size tub with shower.

No 13

Second floor North West corner

One bedroom apartment approx. 20' x 25'

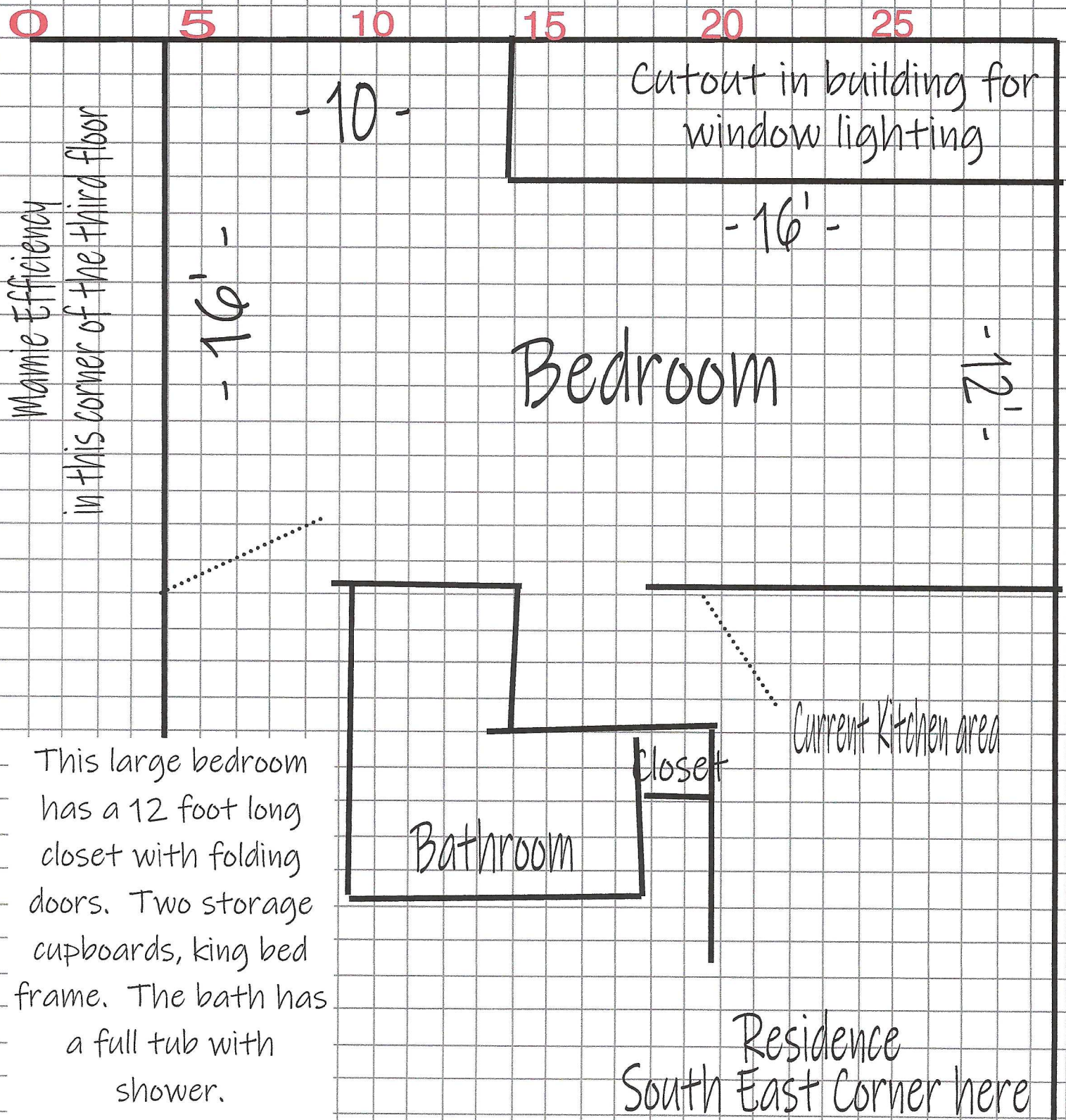


This apartment is furnished with a full size bed (new mattress and box spring), 4 drawer dresser, marble top antique coffee table, large sofa, antique rocking chair, 48" round dining table with 3 assorted chairs, refrigerator, stove, microwave, coffee maker, full size tub with shower. (Named No.13 because there were originally 13 hotel rooms per floor when this was built and this was the last apartment to be re-finished.)

Residence Master Bedroom

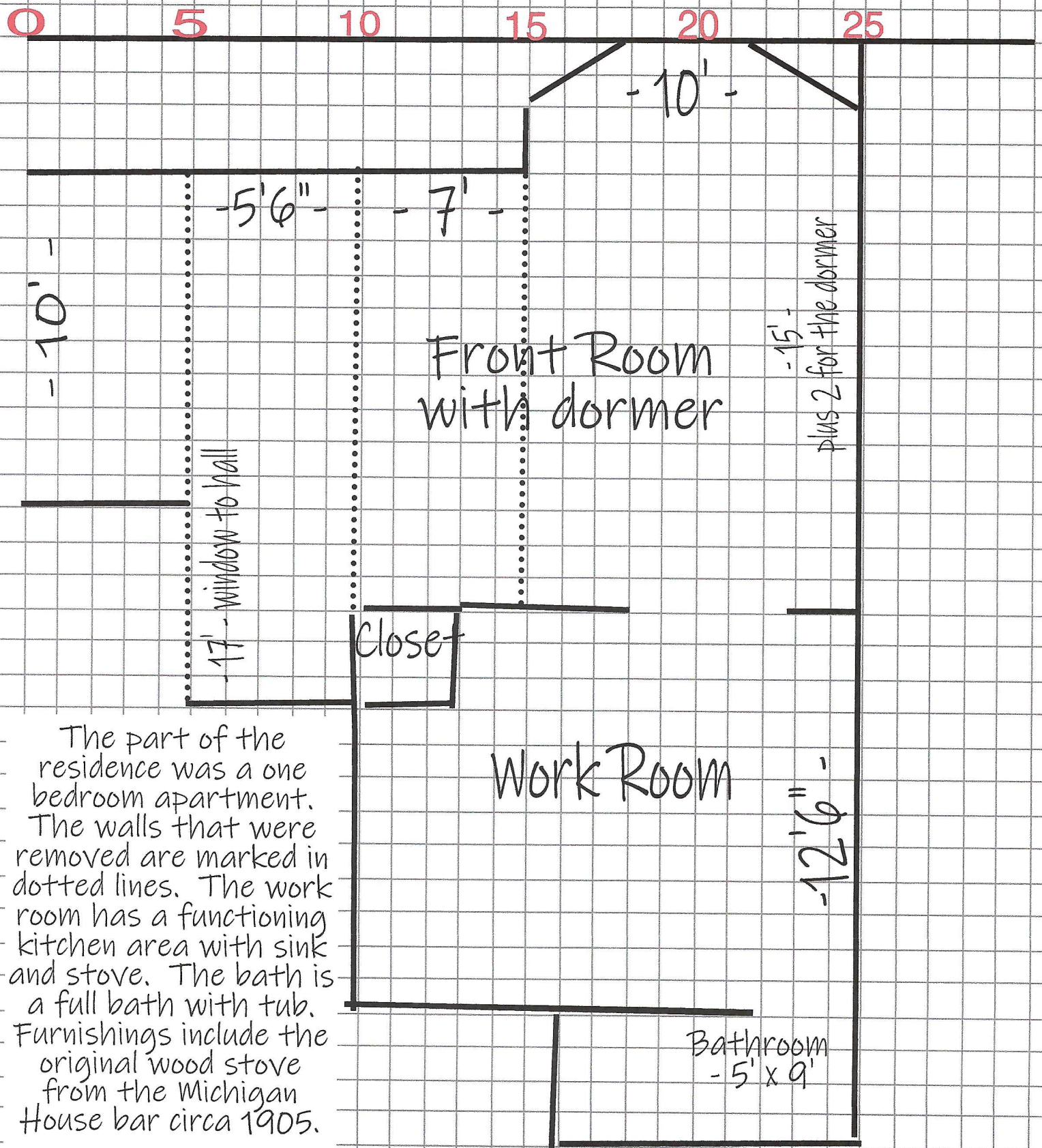
Third floor North East corner

This was a one bedroom apartment without kitchen



Residence South West living area

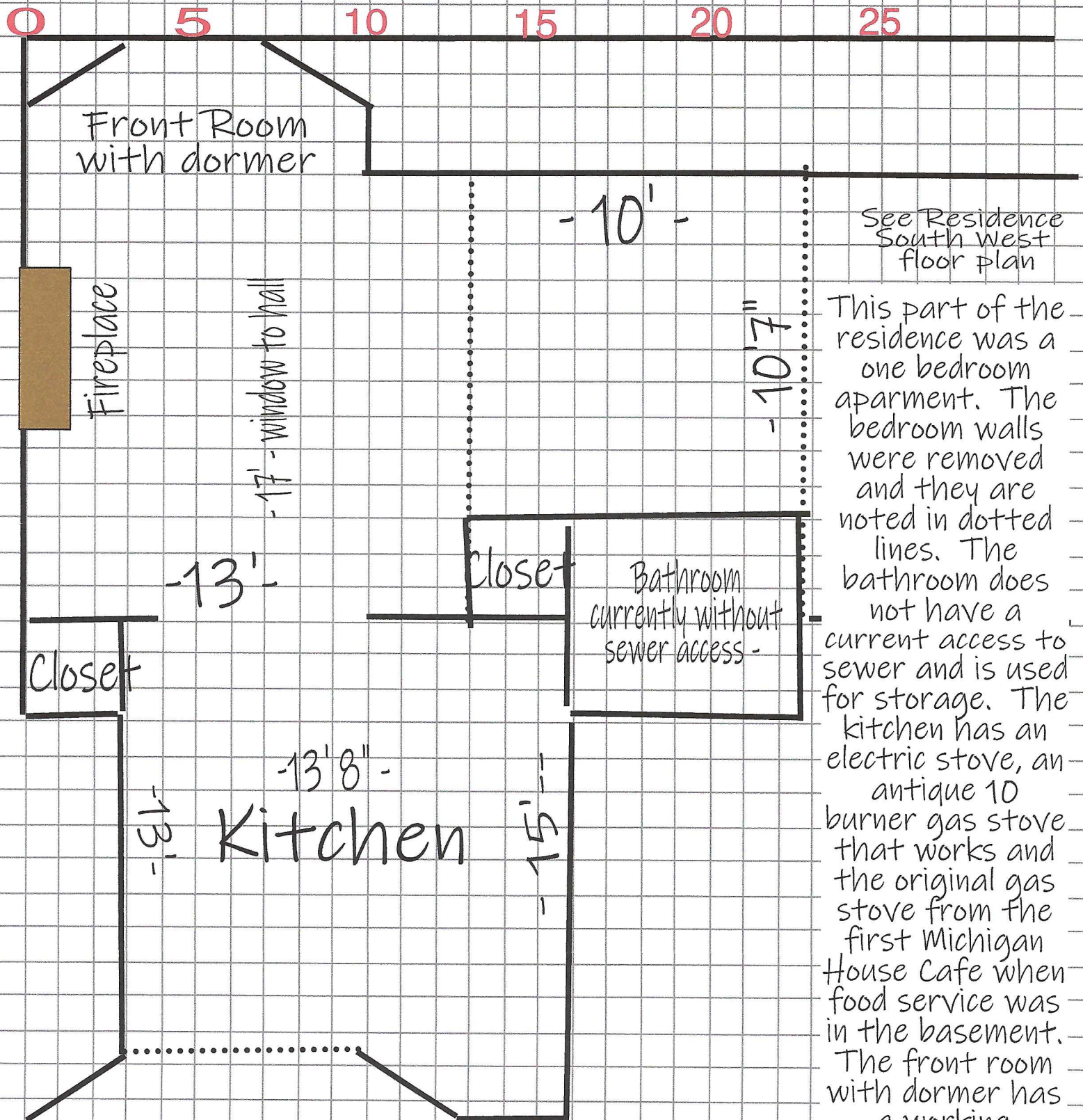
Third floor south west corner overlooking the intersection.



The part of the residence was a one bedroom apartment. The walls that were removed are marked in dotted lines. The work room has a functioning kitchen area with sink and stove. The bath is a full bath with tub. Furnishings include the original wood stove from the Michigan House bar circa 1905.

Residence South East living area

Third floor south east corner overlooking the Oak St.



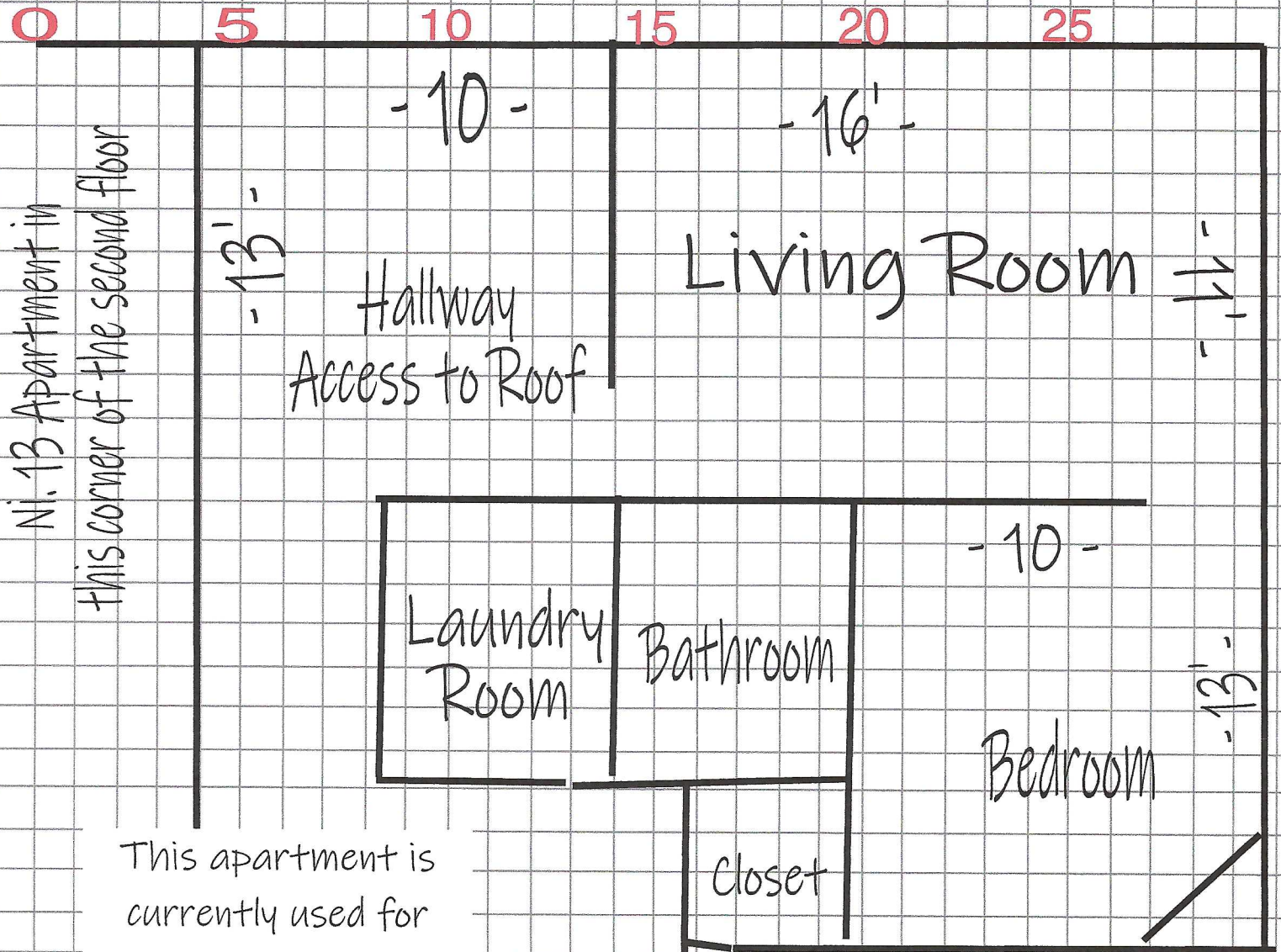
See Residence South West floor plan

This part of the residence was a one bedroom apartment. The bedroom walls were removed and they are noted in dotted lines. The bathroom does not have a current access to sewer and is used for storage. The kitchen has an electric stove, an antique 10 burner gas stove that works and the original gas stove from the first Michigan House Cafe when food service was in the basement. The front room with dormer has a working fireplace.

Chart Room

Second floor North East Corner

One bedroom apartment without kitchen



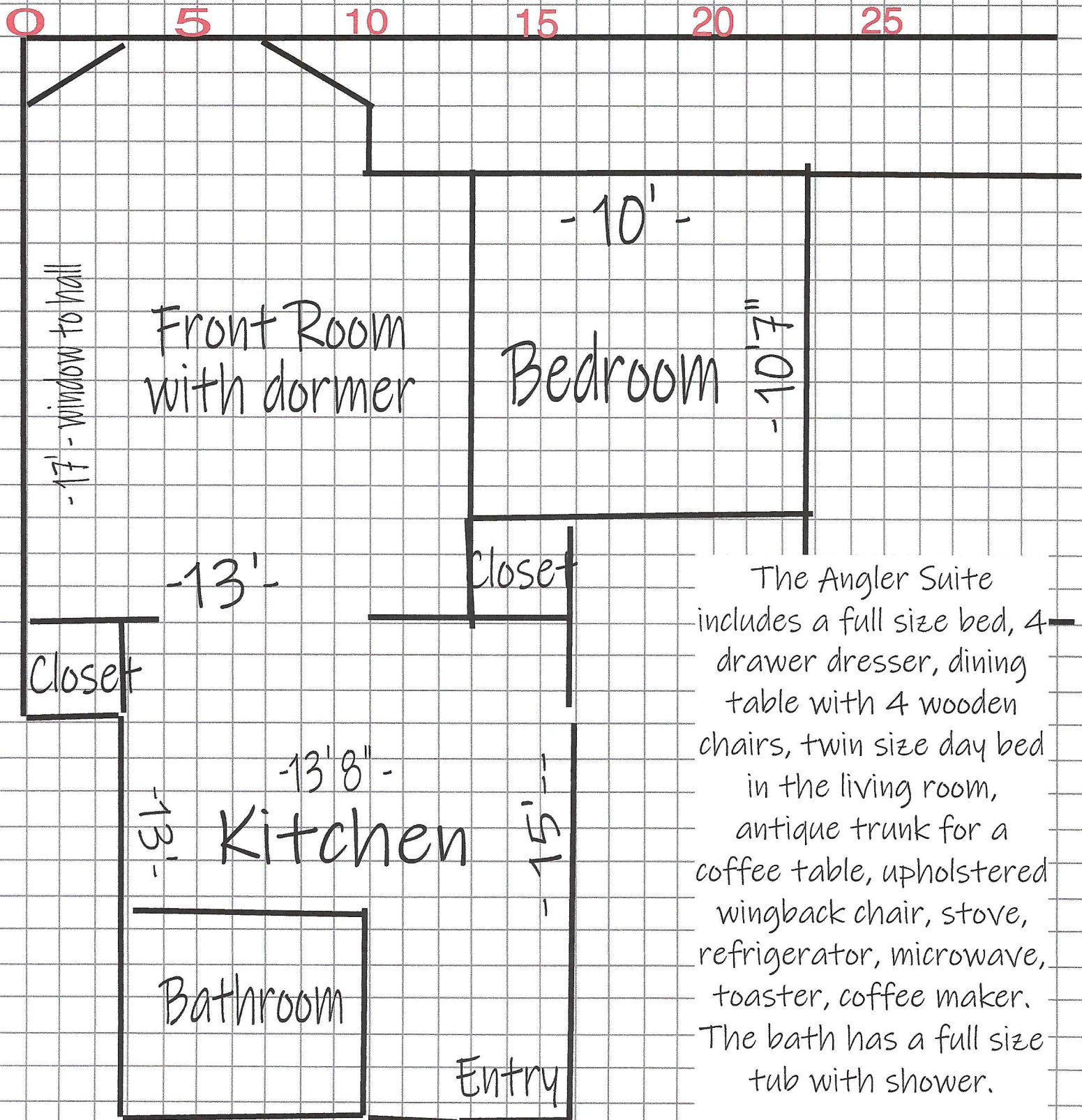
This apartment is currently used for storage. The bathroom has a full size tub with shower.

Angler Suite in
this corner of the second floor

Angler Suite

Second floor lodging South East corner

One bedroom, full bath



The Angler Suite includes a full size bed, 4-drawer dresser, dining table with 4 wooden chairs, twin size day bed in the living room, antique trunk for a coffee table, upholstered wingback chair, stove, refrigerator, microwave, toaster, coffee maker. The bath has a full size tub with shower.

Corner Walk-up

Second floor south west corner

Efficiency apartment

