

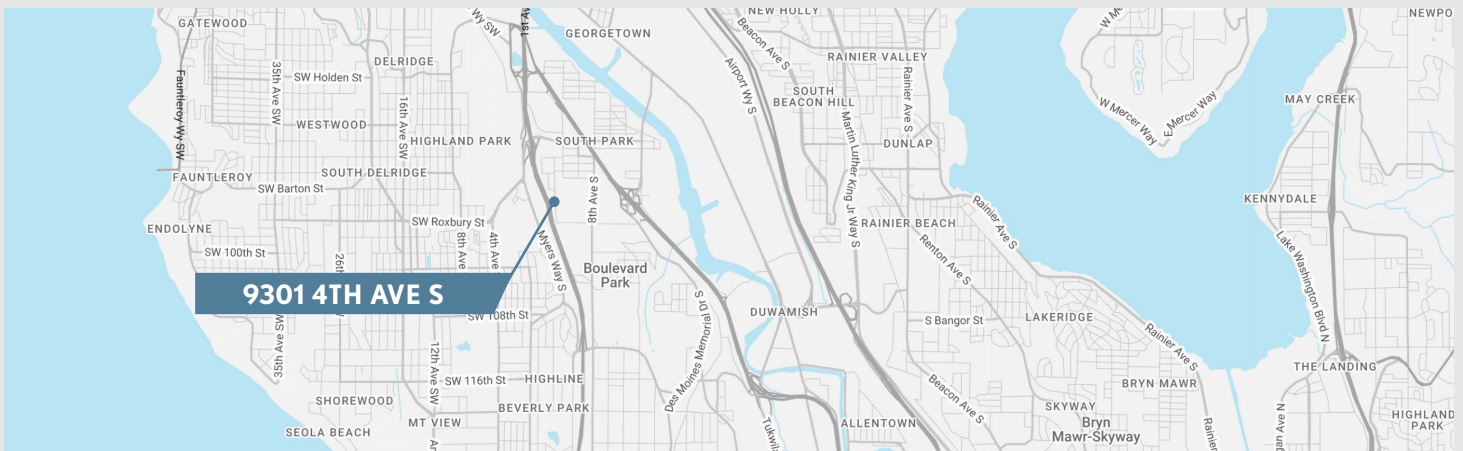
# SOUTH SEATTLE INDUSTRIAL YARD SPACE FOR LEASE



## 9301 4TH AVE S SEATTLE, WA 98108

PARCEL #	322404-9056
AVAILABLE BLDG SF	2,000 SF
USABLE LOT SF	90,976 SF
LEASE RATE	\$29,000 / MO
LEASE TYPE	NNN

- Fenced Yard Area
- Total Lot Area: 2.1 Acres or 92,347 Lot SF
- Ideal for Vehicle or Equipment Storage
- 2,000 SqFt Office Space
- Easy Location for Large Truck Access
- Visibility and Exposure to SR-509
- Excellent Access to SR-509 & SR-99
- Zoning: (I) Industrial, King County

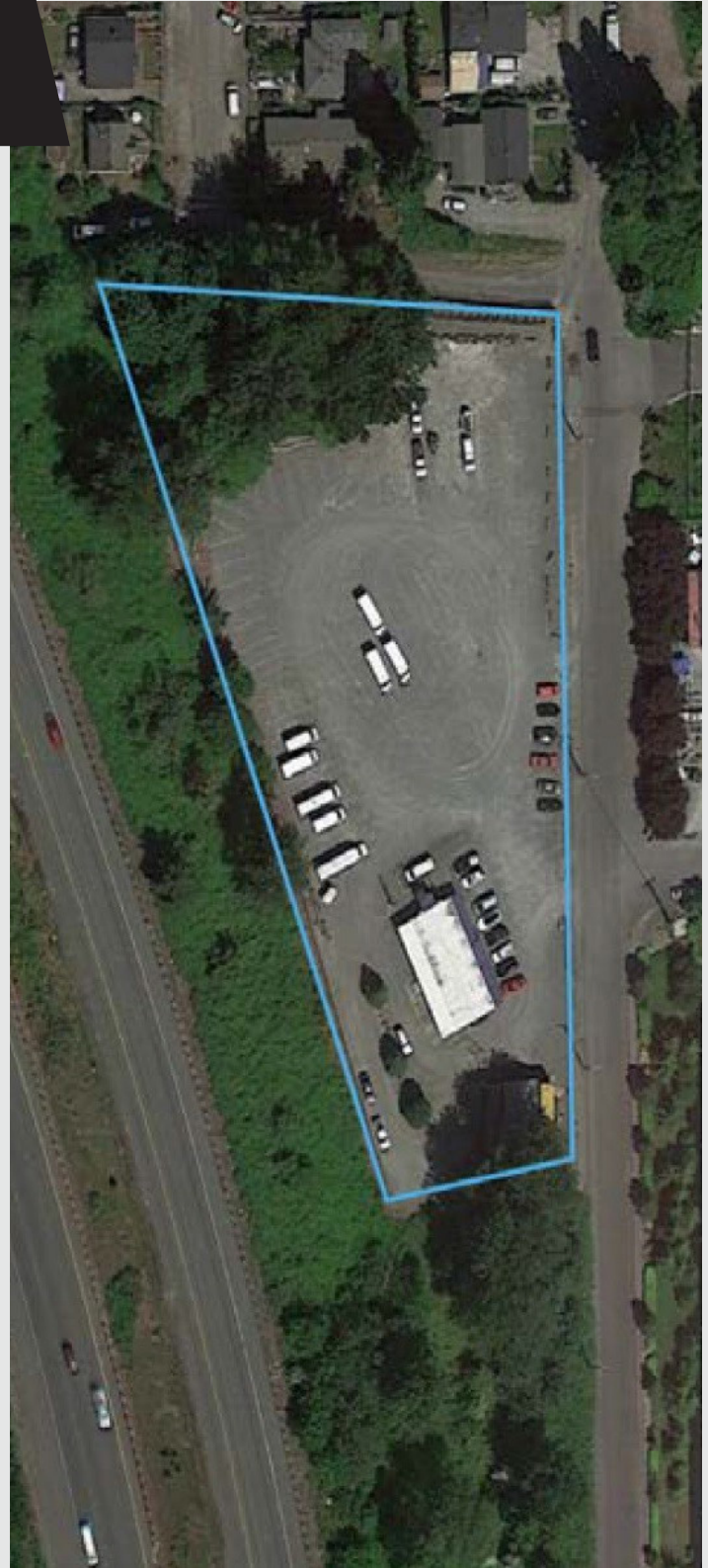


**WESTLAKE**  
ASSOCIATES, INC.

**MATTHEW LITTLE, CCIM**  
PRINCIPAL | MANAGING BROKER  
P 206.505.9422  
little@westlakeassociates.com

**TYLER LITTLE**  
BROKER  
P 206.428.9902  
tyler.little@westlakeassociates.com

# YARD SPACE FOR LEASE



**WESTLAKE**  
ASSOCIATES, INC.

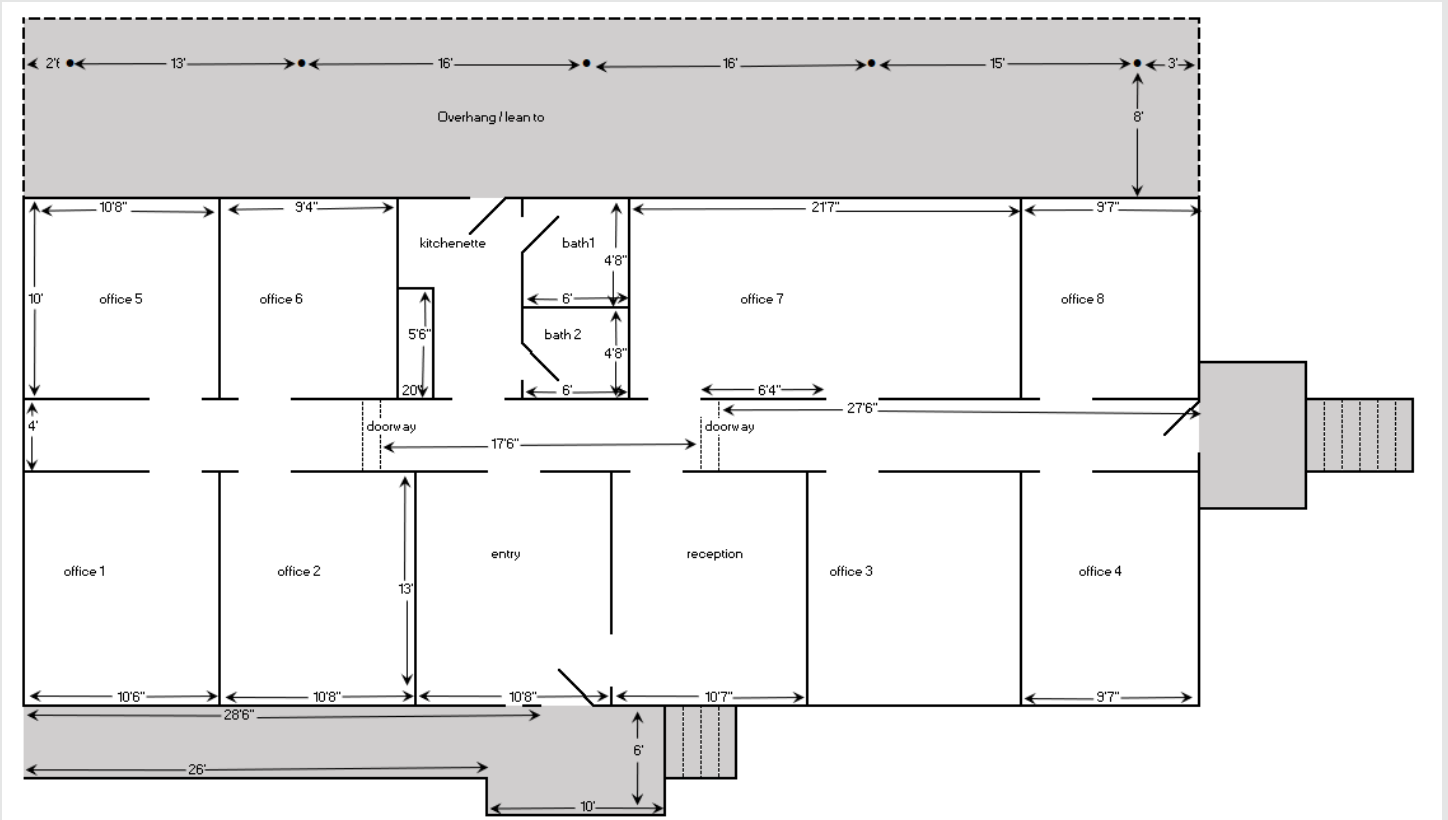
**MATTHEW LITTLE, CCIM**  
PRINCIPAL | MANAGING BROKER

P 206.505.9422  
little@westlakeassociates.com

**TYLER LITTLE**  
BROKER

P 206.428.9902  
tyler.little@westlakeassociates.com

# OFFICE FLOOR PLAN



1200 WESTLAKE AVENUE N, SUITE 310  
SEATTLE, WASHINGTON 98109

©2025 WESTLAKE ASSOCIATES, INC.  
DISCLAIMER: This information has been secured from sources we believe to be reliable, but we make no representations or warranties, expressed or implied, as to the accuracy of the information. References to square footage, age, and numbers are approximate. Parties must verify the information and bear all risk for any inaccuracies.