

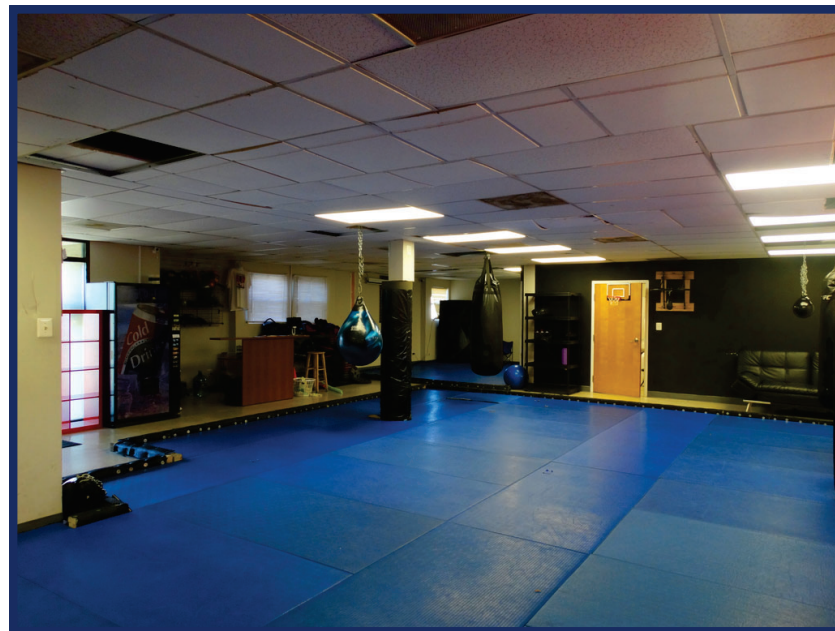
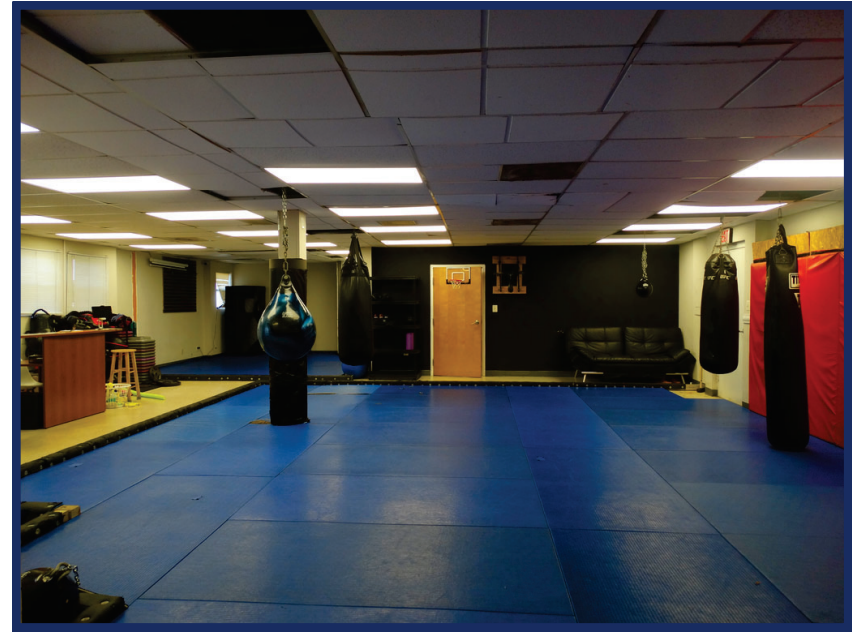
7209 LOCKPORT PLACE
LORTON, VA 22079
1,617 Square Feet Available



rt

FOR LEASE

IMAGES OF 7209 LOCKPORT PLACE



rt

IMAGES OF 7209 LOCKPORT PLACE



rt

7209 LOCKPORT PLACE

LEASE:

Per SF	\$16.00 NNN
NNN	\$3.44 PSF
Term	3 to 5 years

BUILDING OVERVIEW:

Type	2 Star Industrial Warehouse
Year Built	1981

SUITE OVERVIEW:

Suite Size	1,617 SF
Bathrooms	1 full bath
Floor	1st
Park spots	4

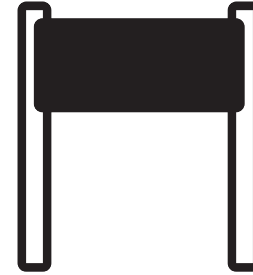


PROPERTY HIGHLIGHTS



STREET-LEVEL VISIBILITY

Easily seen from the main road, this space offers direct street access.



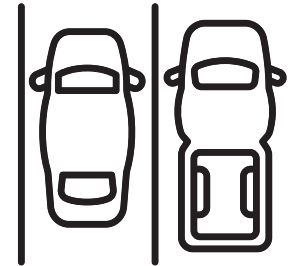
SIGNAGE AVAILABLE

Building signage available to showcase your brand and capture attention from passing traffic.



PRIME LOCATION

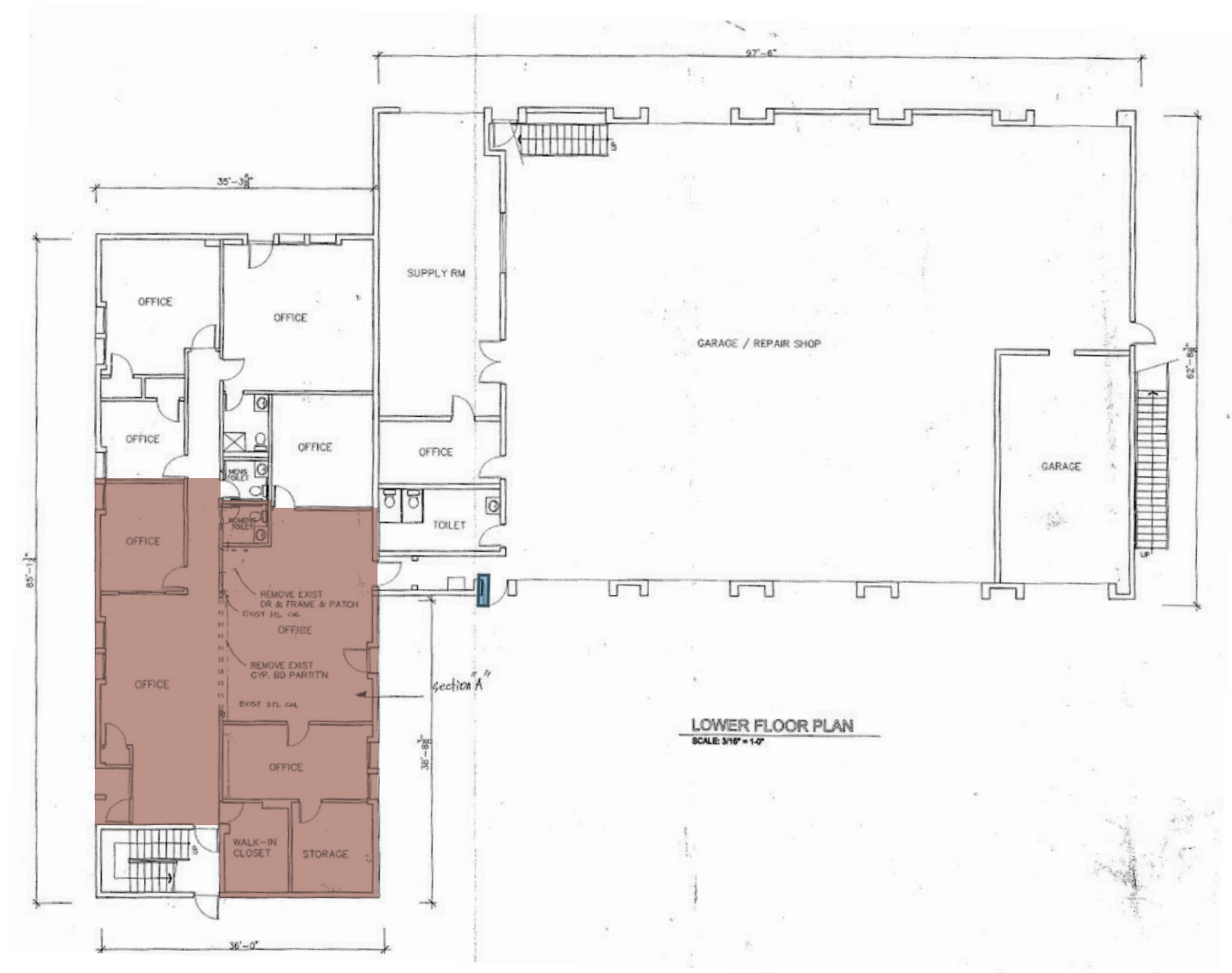
Excellent access to major transportation routes including I-95, Route 1, and Fairfax County Parkway



PARKING

Parking is available directly in front of the space.

FLOOR PLAN



rt

LOCATION

HIGHLIGHTS

- Located in the Pohick Industrial Park within the Newington submarket
- Access to major transportation routes including I-95, Route 1, and Fairfax County Parkway
- Connectivity to Washington, D.C., Northern Virginia, and surrounding business hubs



rt



For more information, please contact:

Guy Travers, Principal Broker

703.339.0100

*Post Office Box 686
Springfield, Virginia 22150*

P: 703.339.0100

F: 703.550.8815

www.rltinc.net



R.L. Travers & Associates, Inc.

Disclaimer: We have in preparing this information, used our best endeavors to ensure that the information contained herein is true and accurate, and deemed to be a reliable reflection of market values or has been secured from sources we believe to be reliable, but we make no representation, guarantee or warranties, expressed or implied, as to the accuracy of the information complete, or reliable, current or error-free and assume no responsibility for any errors or omissions contained therein. All references to age, square footage, income, and expenses are approximate. This is not a survey, any pictures, images, or drawings are only for illustrative purposes. Any party should conduct their own independent investigations and rely solely on those results. This is not intended as a listing solicitation for a property currently listed with another broker.