

FOR LEASE



METROPOLITAN PACIFIC
REAL ESTATE GROUP



212 Santa Monica Boulevard Santa Monica, CA

RETAIL/RESTAURANT SPACE BETWEEN THIRD STREET PROMENADE AND OCEAN

- 2,500 to 4,850 rsf available
- Costar Retail Location Score of 98
- Over 20,000 vehicles per day on Santa Monica Boulevard
- Steps from Third Street Promenade and the beach
- Third Street Promenade had 15.9 million pedestrian impressions in FY 2020/21
- Nearby city parking structures contain 6,149 spaces
- Fifty feet of glass frontage on Santa Monica Blvd.
- Potential for outdoor covered patio area
- Dense trade area with significant retail, office, and mixed-use, and increasing residential developments nearby
- 16' Ceiling Height

CONTACT

310 395 7300

METROPOLITAN PACIFIC

DRE #01395401

Gary Steinhardt

DRE #02151907

gsteinhardt@metpac.com

John Warfel

DRE# 01184386

jwarfel@metpac.com

REPRESENTED BY METROPOLITAN COMMERCIAL REAL ESTATE SERVICES

Please do not disturb existing tenant. Shown by appointment only.

212 Santa Monica Blvd. Santa Monica, CA



METROPOLITAN PACIFIC
REAL ESTATE GROUP

Gary Steinhardt . gsteinhardt@metpac.com . John Warfel . jwarfel@metpac.com . 310 395 7300

REPRESENTED BY METROPOLITAN COMMERCIAL REAL ESTATE SERVICES

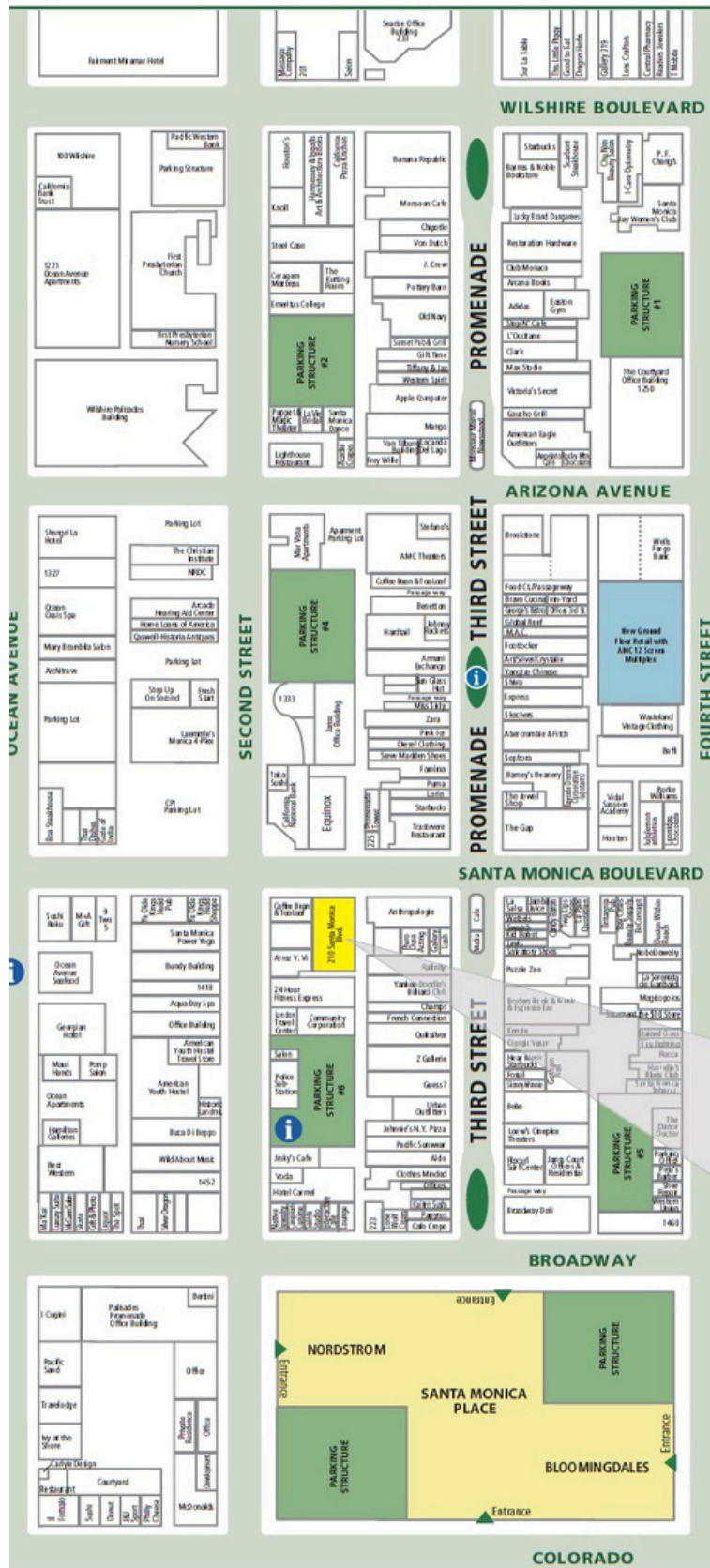
Please do not disturb existing tenant. Shown by appointment only.

212 Santa Monica Blvd.

Santa Monica, CA



METROPOLITAN PACIFIC
REAL ESTATE GROUP



212
Santa Monica Blvd.

Gary Steinhardt . gsteinhardt@metpac.com . John Warfel . jwarfel@metpac.com . 310 395 7300

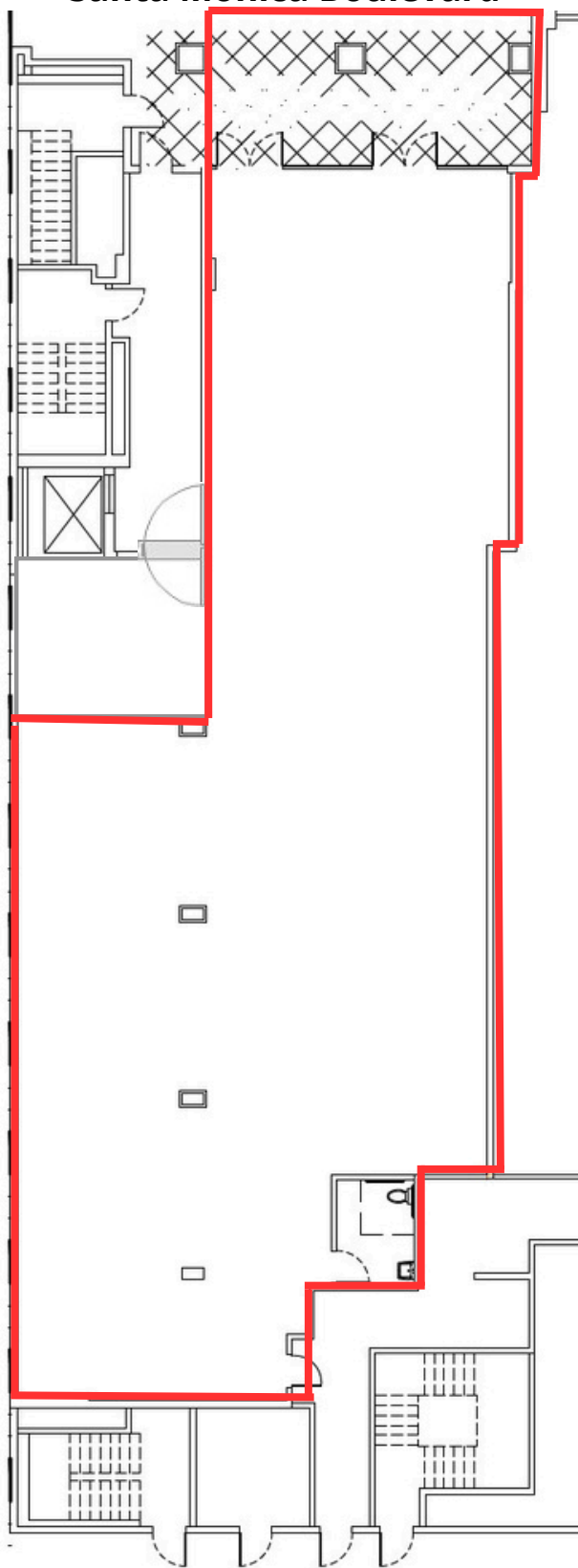
REPRESENTED BY METROPOLITAN COMMERCIAL REAL ESTATE SERVICES
Please do not disturb existing tenant. Shown by appointment only.

212 Santa Monica Blvd. Santa Monica, CA



METROPOLITAN PACIFIC
REAL ESTATE GROUP

Santa Monica Boulevard



Gary Steinhardt . gsteinhardt@metpac.com . John Warfel . jwarfel@metpac.com . 310 395 7300

REPRESENTED BY METROPOLITAN COMMERCIAL REAL ESTATE SERVICES

Please do not disturb existing tenant. Shown by appointment only.