

RETAIL • SHOWROOM • CREATIVE OFFICE • FOR LEASE



8378-8383

MELROSE
AVENUE

Carine Mamann
Vice Chairman
lic. 01734150
carine.mamann@cushwake.com
T. 310 595 2235

Kazuko Morgan
Executive Vice Chairman
lic. 01070005
kazuko.morgan@cushwake.com
T. 310 595 2235

Jay Luchs
Vice Chairman
lic. 01260345
jay.luchs@nmrk.com
T. 310 407 6585

 **CUSHMAN &
WAKEFIELD**
NEWMARK
PACIFIC

PROPERTY DETAILS



USE

Ground Retail,
Creative Office / Showroom



RENT

Available upon Request



SIZE

± 2,000 - 15,244 RSF



PARKING

Building Exclusive
Parking Lot with 36 Spots



NEWMARK
PACIFIC

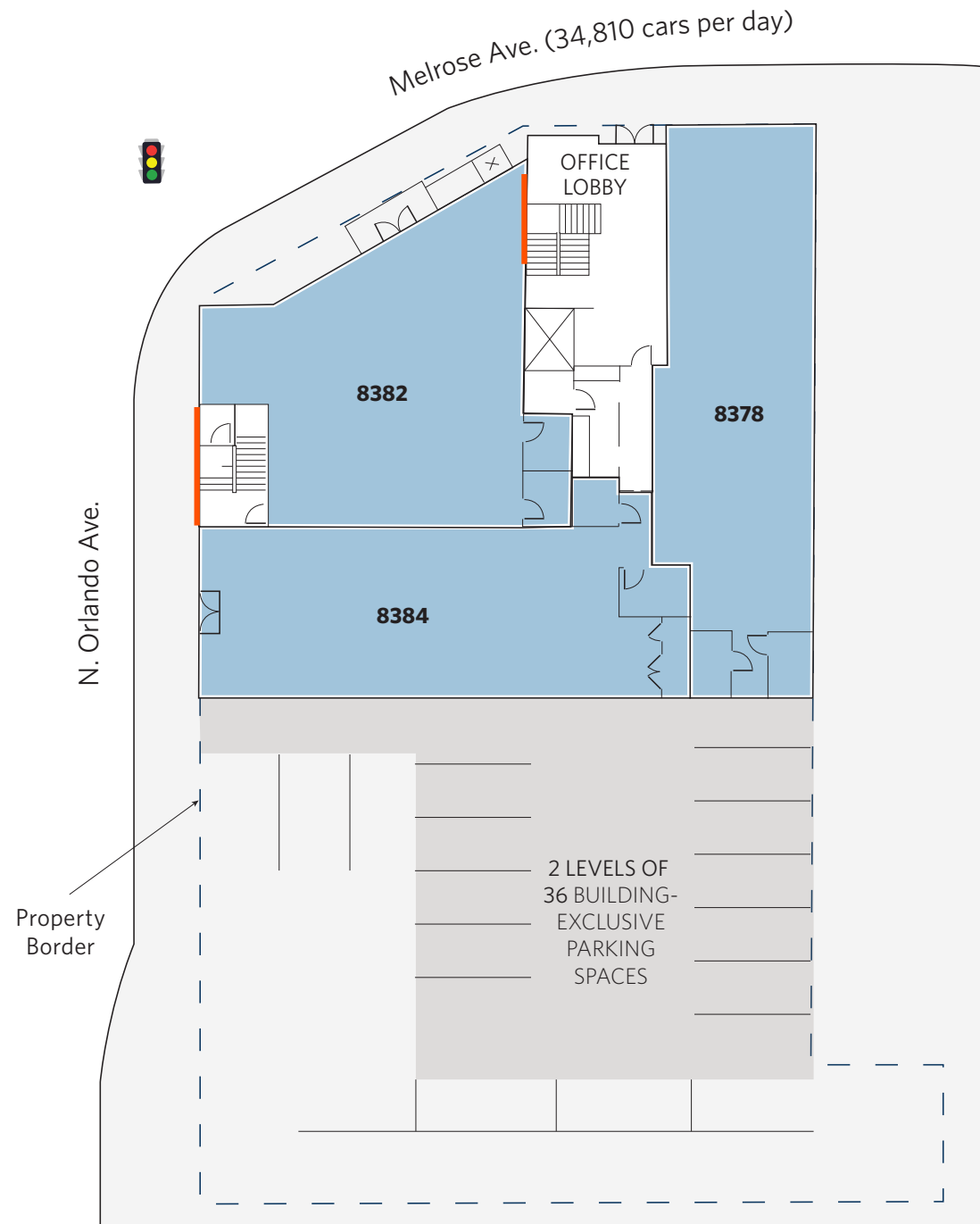
**CUSHMAN &
WAKEFIELD**

HIGHLIGHTS

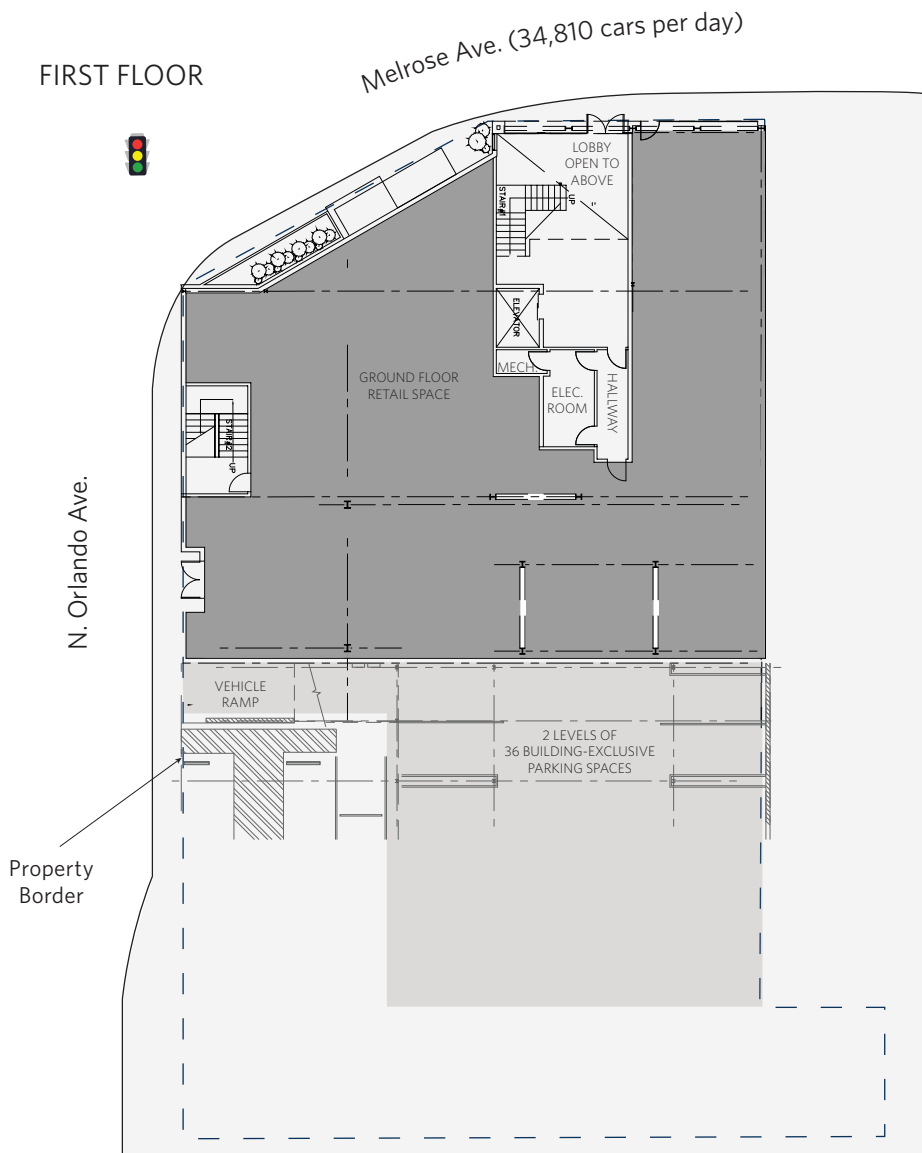
Located in the heart of the Melrose Avenue traffic flow through West Hollywood.

Highly coveted location surrounded by many well known retailers such as: Mejuri, Away, Cult Gaia, House of CB, Nordstrom, Gucci, Indochino, and Adidas.

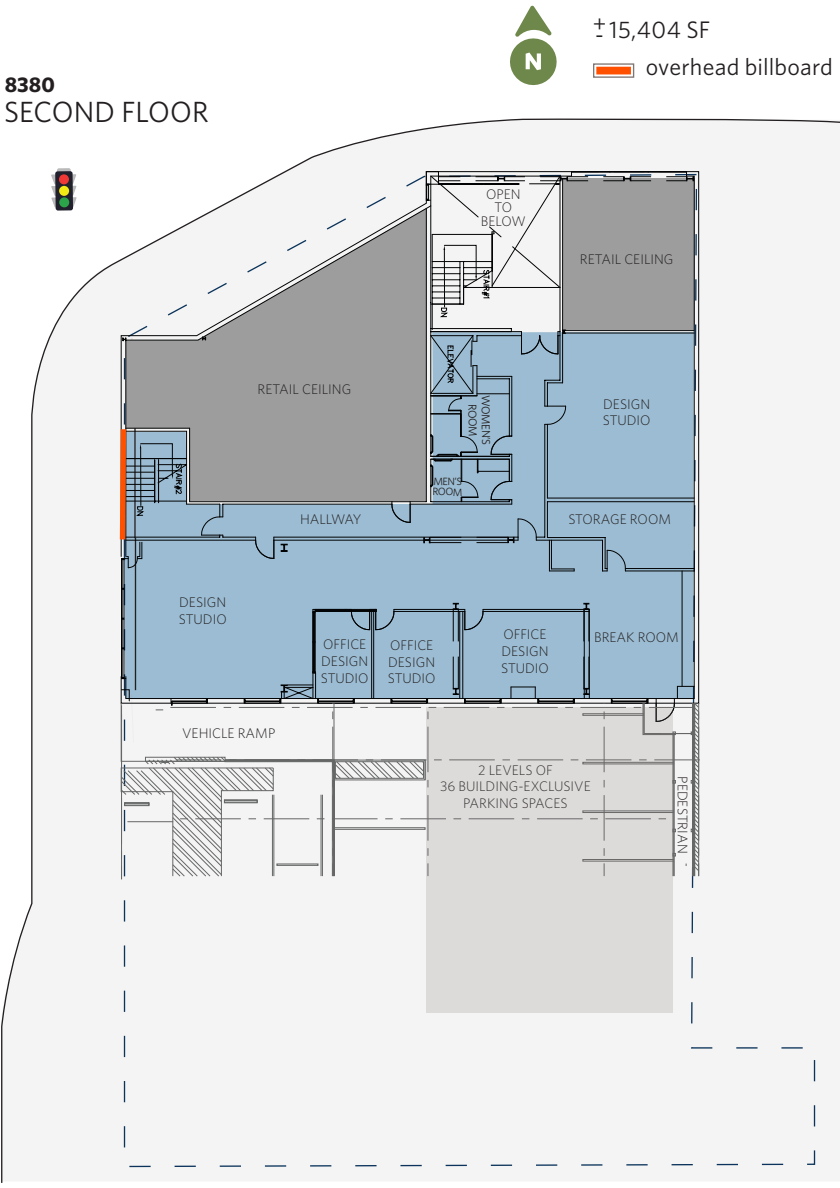
Suite 8378	± 2,000 RSF
Suite 8382	± 2,062 RSF
Suite 8384	± 2,073 RSF
2nd Floor	± 5,400 RSF
3rd Floor	± 7,422 RSF
Penthouse	± 2,422 RSF
Total Square Feet	± 21,379 RSF



PREMISES

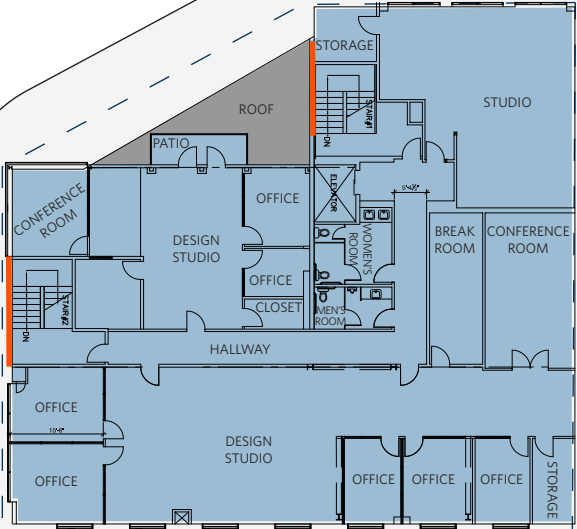


8380
SECOND FLOOR

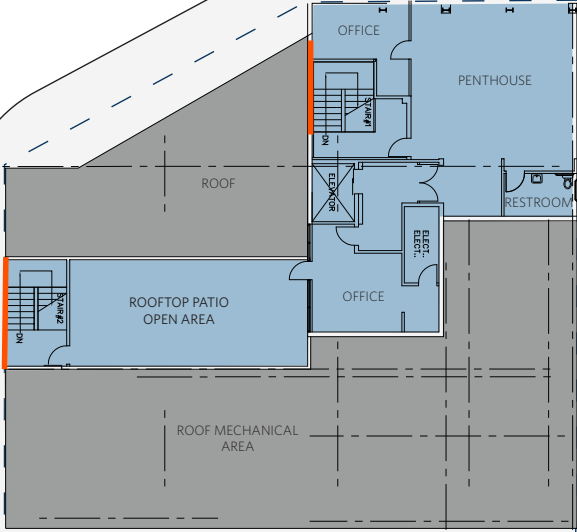


PREMISES

8380
THIRD FLOOR



8380
PENTHOUSE



±15,404 SF

overhead billboard

DEMOGRAPHICS



POPULATION

47,993	278,171	856,661
1 MILE	3 MILES	5 MILES



MEDIAN AGE

41.3	39.7	37.7
1 MILE	3 MILES	5 MILES



HOUSING UNITS

32,860	158,950	412,870
1 MILE	3 MILES	5 MILES



AVERAGE HOUSEHOLD INCOME

\$134,721	\$144,209	\$123,476
1 MILE	3 MILES	5 MILES





The information contained herein has been obtained from sources deemed reliable but has not been verified and no guarantee, warranty or representation, either express or implied, is made with respect to such information. Terms of sale or lease and availability are subject to change or withdrawal without notice.

Carine Mamann
Vice Chairman
lic. 01734150
carine.mamann@cushwake.com
T. 310 595 2235

Kazuko Morgan
Executive Vice Chairman
lic. 01070005
kazuko.morgan@cushwake.com
T. 310 595 2235

Jay Luchs
Executive Vice Chairman
lic. 01260345
jay.luchs@nmrk.com
T. 310 407 6585

