

4 INVERNESS CT EAST, STE 300 ENGLEWOOD, CO 80112



Office Condo For Sale

An architectural dream! The building, and this 9,135 SF office condominium in particular, features a Mid-Century Modern aesthetic with low-slung sharp lines on the exterior, and interesting geometric structural elements on the interior. The combination of the solid construction and its unique grass roof make 4 Inverness Court East energy efficient and low maintenance.



4 INVERNESS CT EAST
ENGLEWOOD, CO 80112



SUITE 300
SIZE: 9,135 SF



SALE PRICE:
\$1,995,000



COMMUNITY **FIRST** COMMERCIAL
REAL ESTATE, LLC

SCAN ME! →



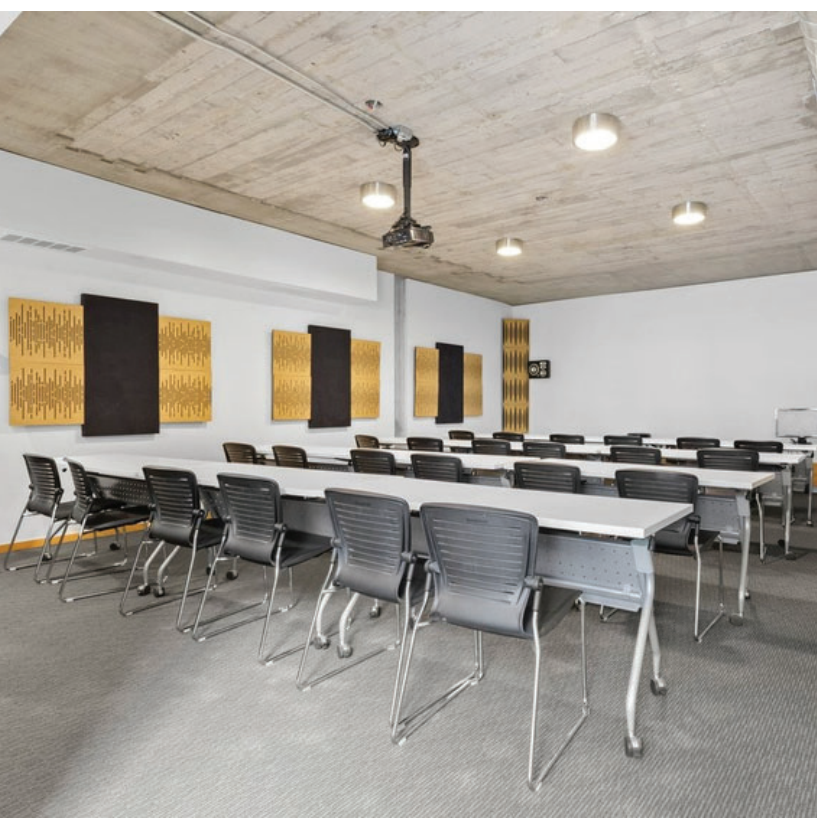
FOR MORE INFORMATION:
MATT EDGAR
MATT@CFIRSTCRE.COM
PHONE: 720.435.2191



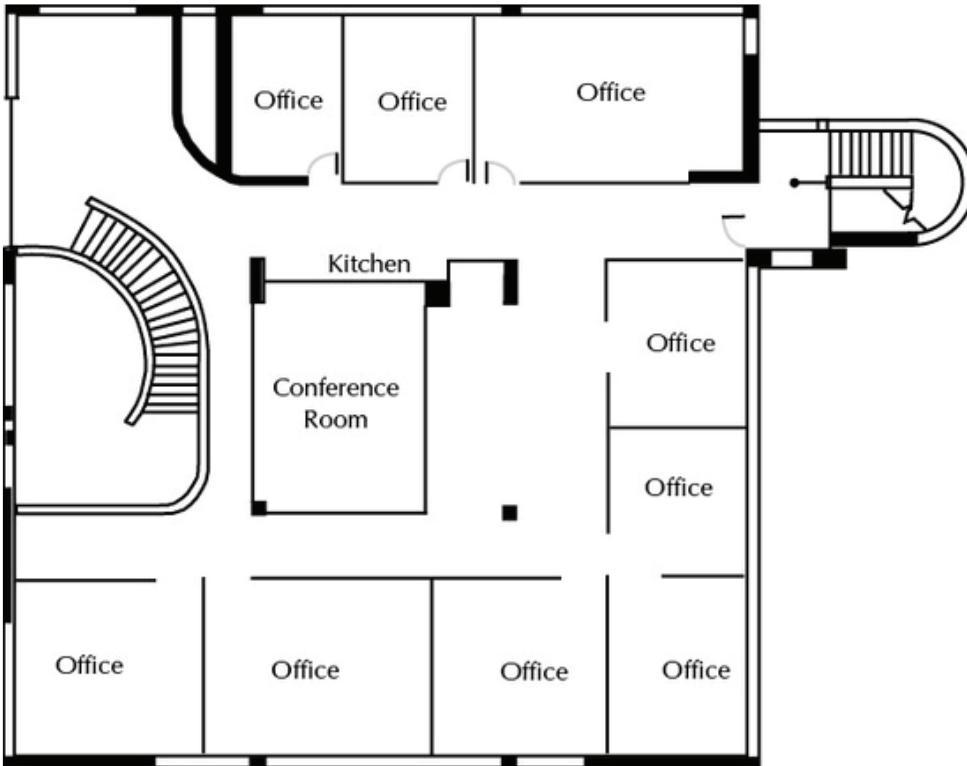
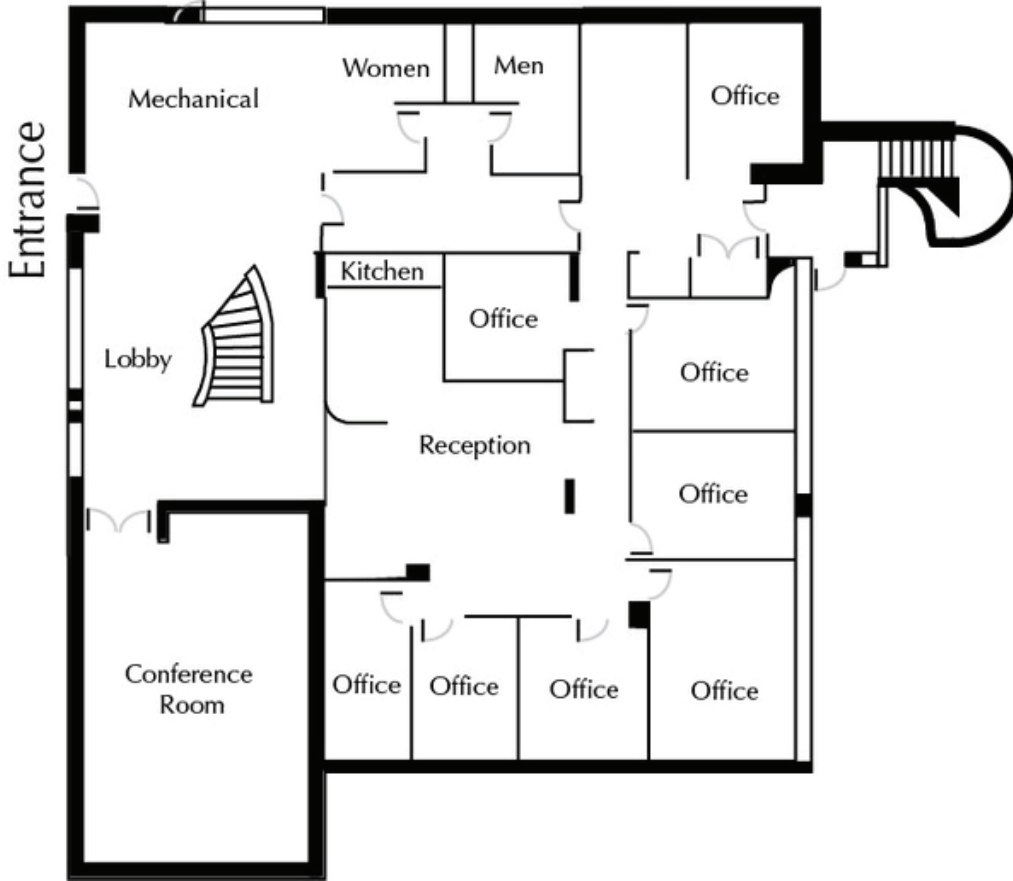
Suite 300 For Sale

4 INVERNESS CT EAST, ENGLEWOOD, CO 80112

RECENTLY UPDATED KITCHEN, BREAK STATIONS,
AND BATHROOMS



4 INVERNESS CT EAST, STE 300 ENGLEWOOD, CO 80112



LOCATED ALONG INVERNESS
GOLF COURSE, PRIVATE
OUTDOOR PATIO



PARKING:
SURFACE, 4:1,000



EASY ACCESS TO I-25 VIA
COUNTY LINE OR DRY CREEK



INCREDIBLE AMENITIES: WALK
TO INVERNESS HOTEL, SHORT
DRIVE TO UPSCALE DINING AND
SHOPPING

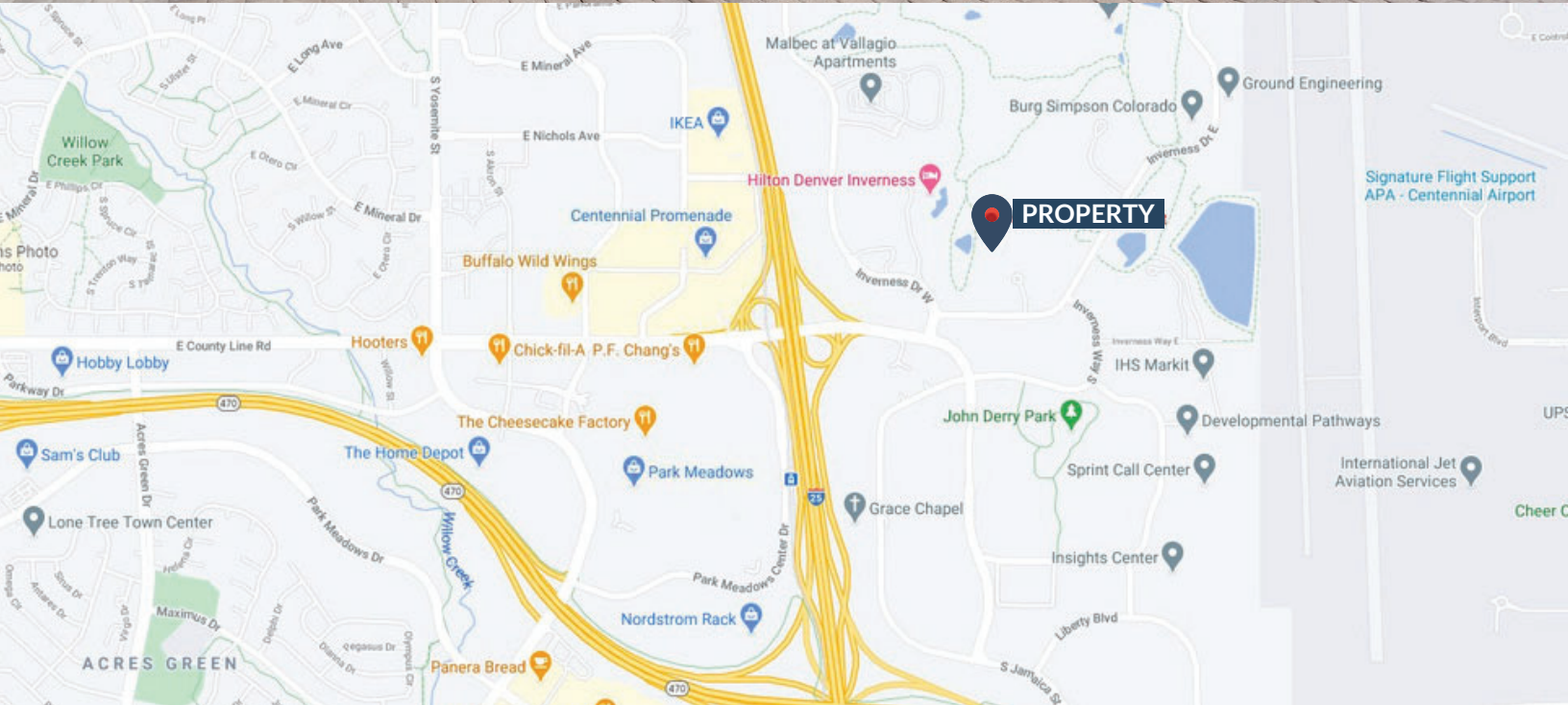


SCAN ME!



COMMUNITY **FIRST** COMMERCIAL
REAL ESTATE, LLC

CONTACT FOR MORE INFORMATION: MATT EDGAR | matt@CFirstCRE.com | PHONE: 720.435.2191



CONTACT: MATT EDGAR | matt@CFirstCRE.com | PHONE: 720.435.2191



COMMUNITY FIRST COMMERCIAL
REAL ESTATE, LLC
Serving Clients. Supporting Our Community.

NO WARRANTY OR REPRESENTATION, EXPRESS OR IMPLIED, IS MADE AS TO THE ACCURACY OF THE INFORMATION CONTAINED HEREIN, AND THE SAME IS SUBMITTED SUBJECT TO ERRORS, OMISSIONS, CHANGE OF PRICE, RENTAL OR OTHER CONDITIONS, PRIOR SALE, LEASE OR FINANCING, OR WITHDRAWAL WITHOUT NOTICE, AND OF ANY SPECIAL LISTING CONDITIONS IMPOSED BY OUR PRINCIPALS NO WARRANTIES OR REPRESENTATIONS ARE MADE AS TO THE CONDITION OF THE PROPERTY OR ANY HAZARDS CONTAINED THEREIN ARE ANY TO BE IMPLIED.