

# FOR LEASE OFFICE SPACE



**275 S Main Street  
Doylestown Borough, Bucks County, PA**

**COMMERCIAL • INDUSTRIAL • INVESTMENT**

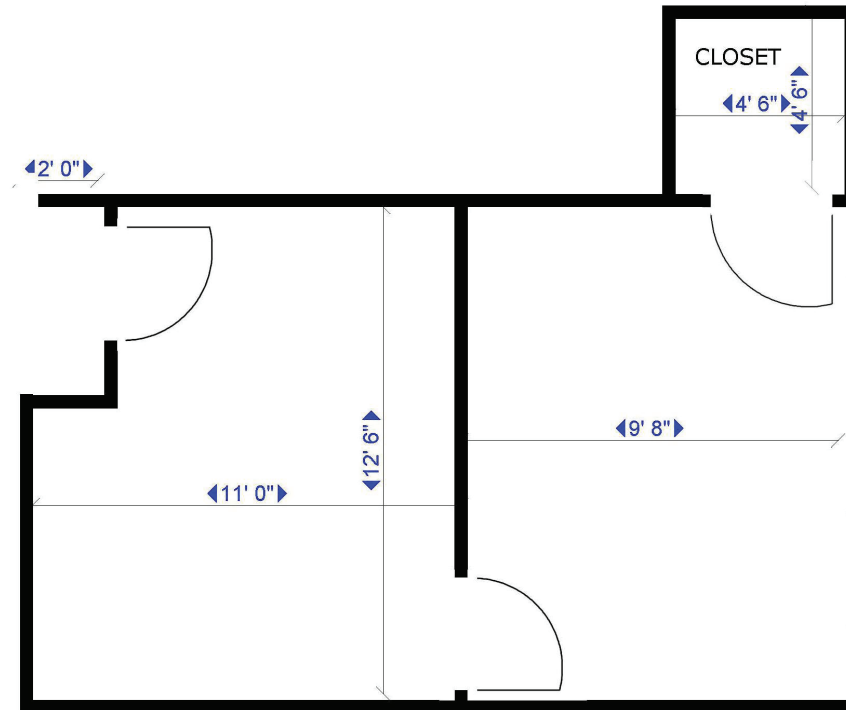


## **PROPERTY SPECIFICATIONS**

**Suite 2A:** .....300± SF      Municipality: ..... Doylestown Borough  
Lease Price:..... \$19/PSF plus utilities, trash  
and HVAC monthly  
maintenance contract



**PRESENTED BY:** Kurt Eisenschmid, CCIM — Penn's Grant Realty Corporation  
2005 S Easton Rd, STE 306, Doylestown, PA • 215-489-3800 x3 • kurt@pgrealty.com • www.pgrealty.com



PARK TERRACE, SUITE 2A  
275 SOUTH MAIN STREET  
DOYLESTOWN

Suite 2A - 300± SF



