



Keyport Plaza

107 Route 35, Keyport, New Jersey

Availability

- +/- 2,663 SF
- +/- 5,031 SF

Co-Tenants



Site Description

- Tremendous outparcel retail opportunity located within the heart of the Keyport/Hazlet market in a Stop & Shop anchored neighborhood shopping center
- Strategically located at the intersection of Route 35 & Route 36 with over 80,000 VPD circulating the site
- Directly adjacent to the Garden State Parkway entrance ramp
- Surrounded by significant residential density and strong HH incomes north of \$132,000

Demographics

Radius	Total Population	Total Daytime Population	Median HH Income
1 Mile	13,241	12,152	\$98,427
3 Mile	72,072	59,257	\$117,311
5 Mile	141,208	111,556	\$118,325

Retail for Lease - Contact

Ryan Starkman
Ph. 732-724-4501
ryan@piersonre.com

PIERSON
COMMERCIAL REAL ESTATE®

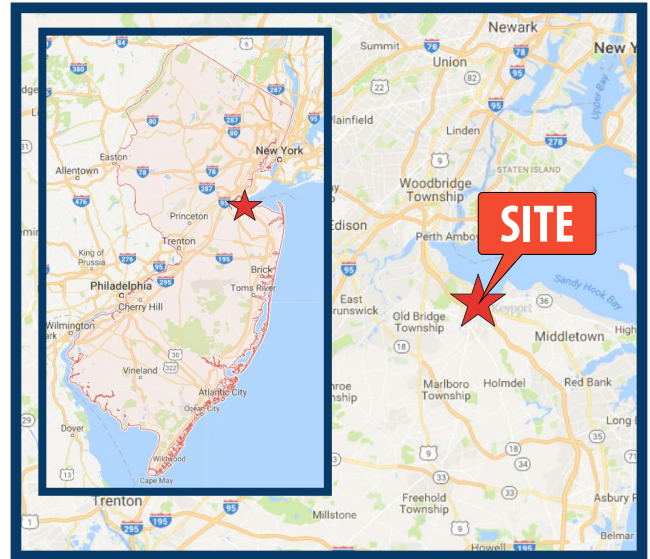
Keyport Plaza

107 Route 35, Keyport, New Jersey

Site View



State Map



Market Aerial



Retail for Lease - Contact

Ryan Starkman

Ph. 732-724-4501

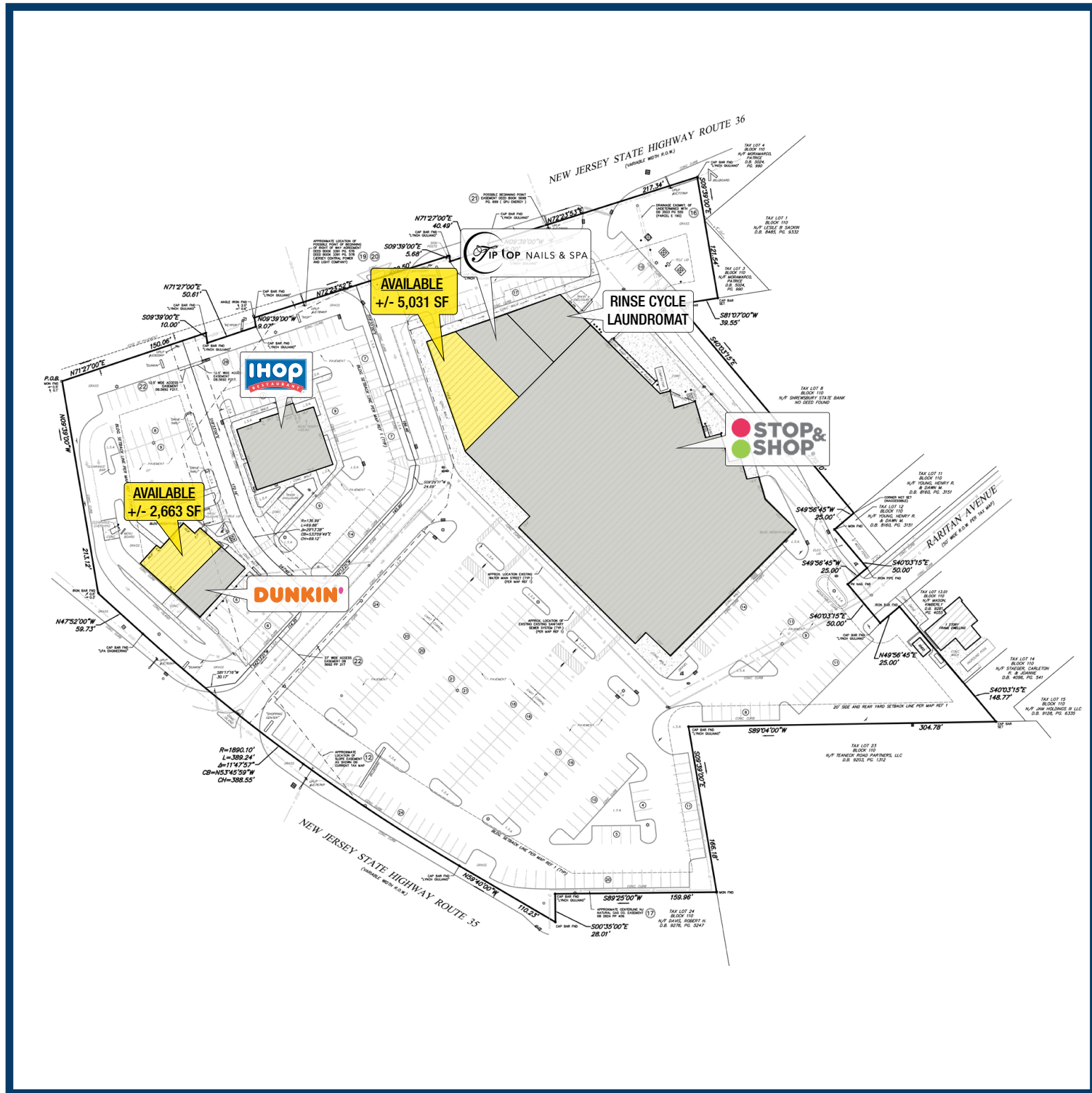
ryan@piersonre.com

PIERSON
COMMERCIAL REAL ESTATE®

Keyport Plaza

107 Route 35, Keyport, New Jersey

Site Plan



Retail for Lease - Contact

Ryan Starkman

Ph. 732-724-4501

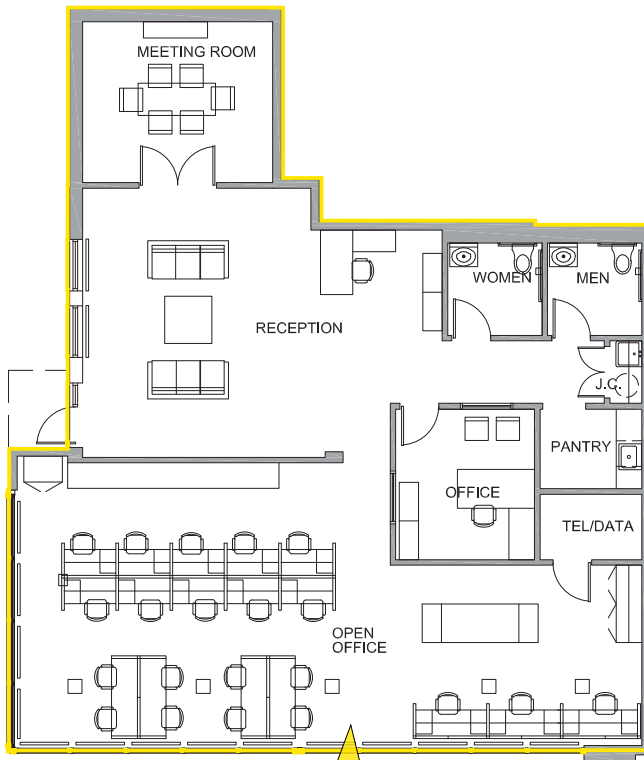
ryan@piersonre.com

PIERSON
COMMERCIAL REAL ESTATE®

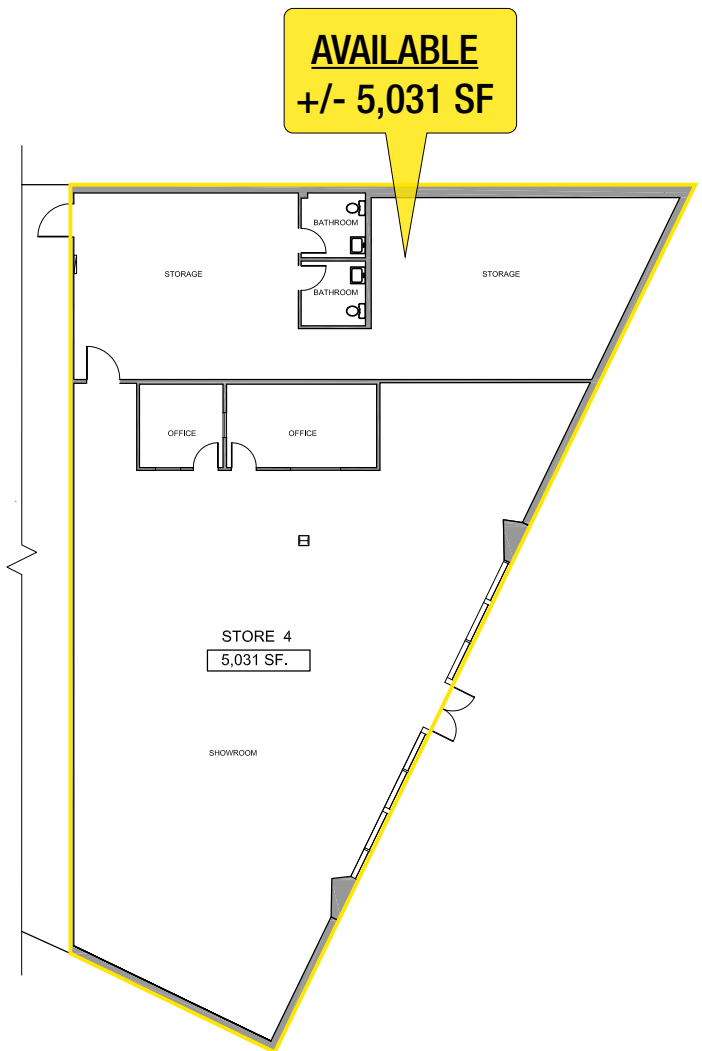
Keyport Plaza

107 Route 35, Keyport, New Jersey

Space Plans



AVAILABLE
+/- 2,663 SF



AVAILABLE
+/- 5,031 SF

STORE 4
5,031 SF.

Retail for Lease - Contact

Ryan Starkman

Ph. 732-724-4501

ryan@piersonre.com

PIERSON
COMMERCIAL REAL ESTATE®