

**FOR SALE**  
INDUSTRIAL LAND

**50 LANDRY STREET**  
**BIDDEFORD, ME 04005**



# PROPERTY HIGHLIGHTS



- 11.62± acres of industrial land available for sale
- Located in Airport Village Industrial Park near the Biddeford Airport
- Less than 5 minutes from I-95 Exit 32, providing easy access to Portland and surrounding cities
- Area businesses include General Marine, Praxair Surface Technologies, DSM Metal Fabrication, Firefly Media, FW Webb, and Kyocera
- **Sale Price: \$1,100,000** (\$94,665/ acre)

**PROPERTY ADDRESS** 50 Landry Street, Biddeford, ME 04005

**OWNER** BROWN DOG CARRIERS LLC

**BOOK/PAGE** 18846/723 ; 18879/311  
(York County)

**ASSESSOR'S REFERENCE** Map 74, Lots 10-2, 11, & 14

**ZONING** I2 - Industrial 2

**LAND AREA** 11.62± AC

**FRONTAGE** 275' - Marcel Avenue  
225' - Landry Street

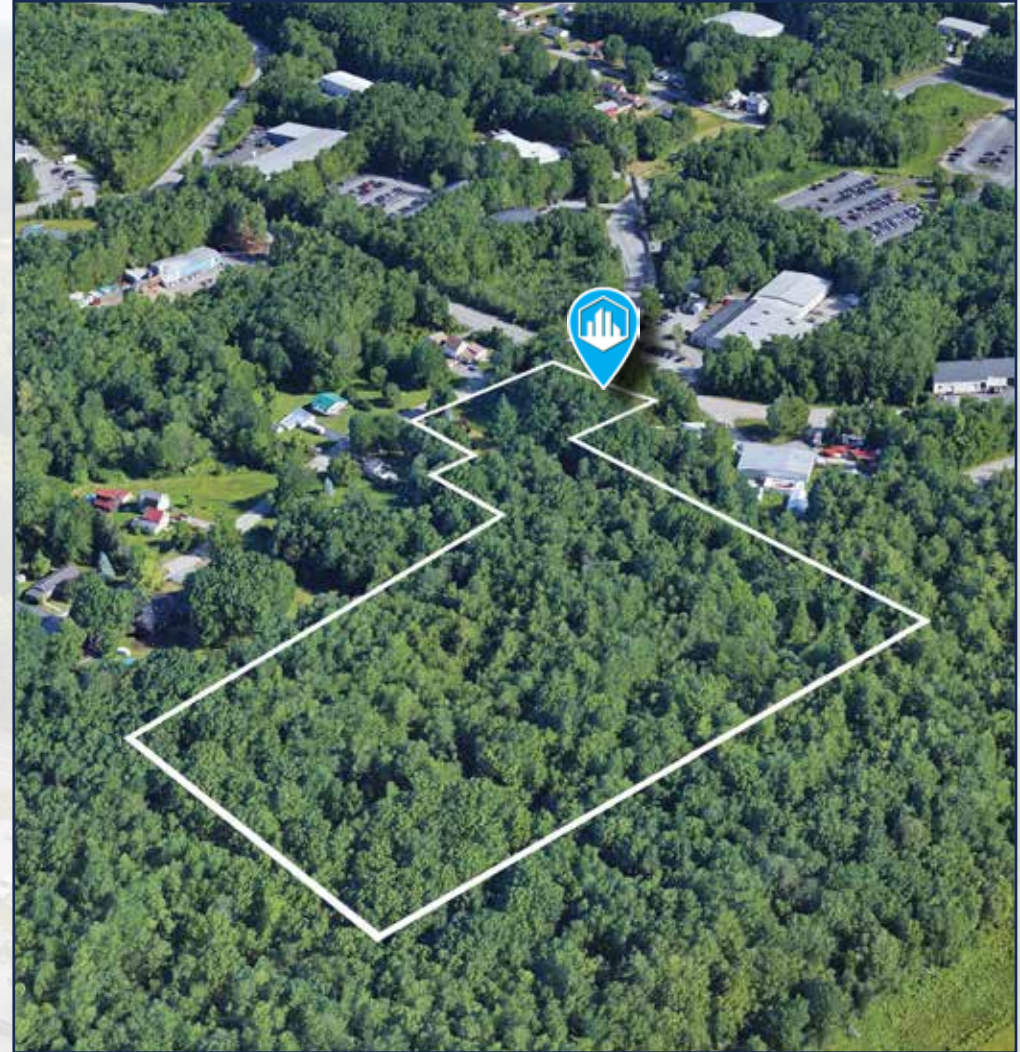
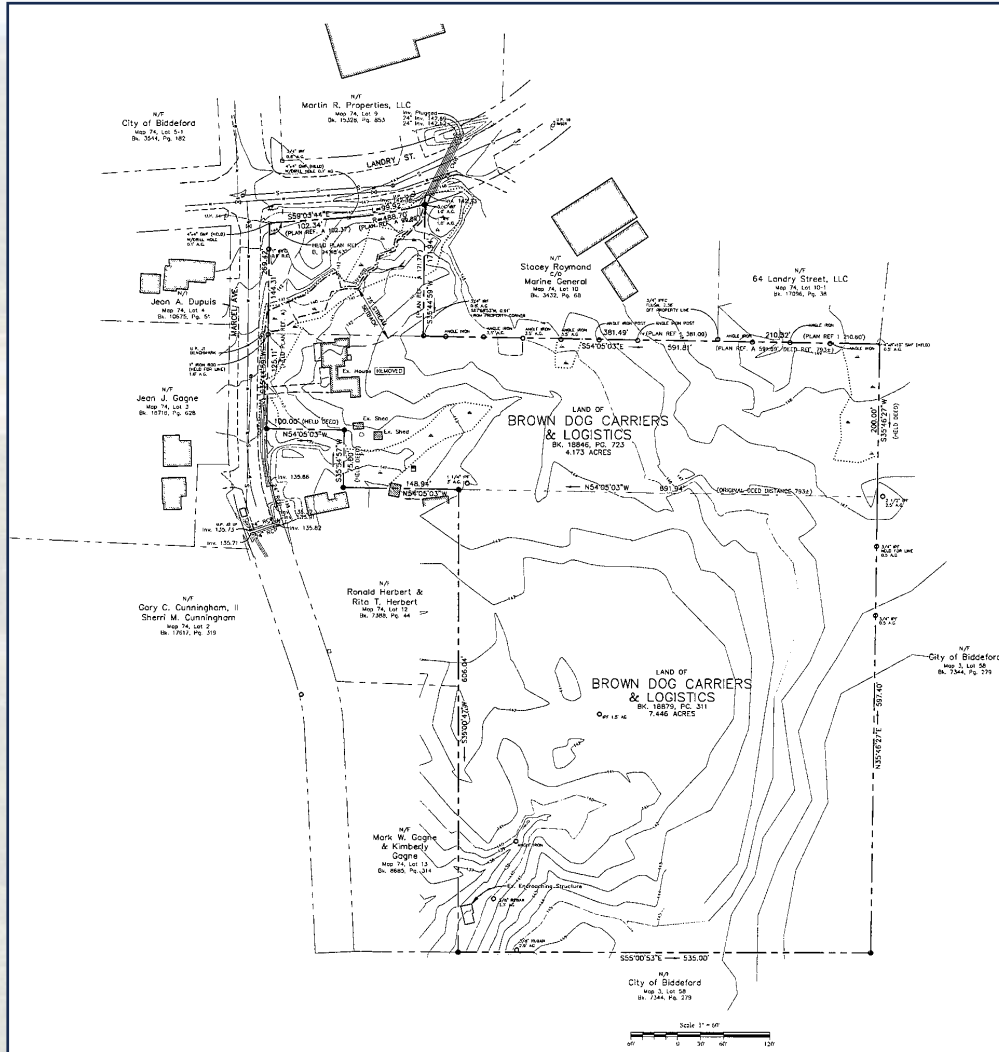
**UTILITIES** Municipal water & sewer

**ANNUAL RE TAXES** \$1,762 (FY 2025)  
Mill rate = 14.22

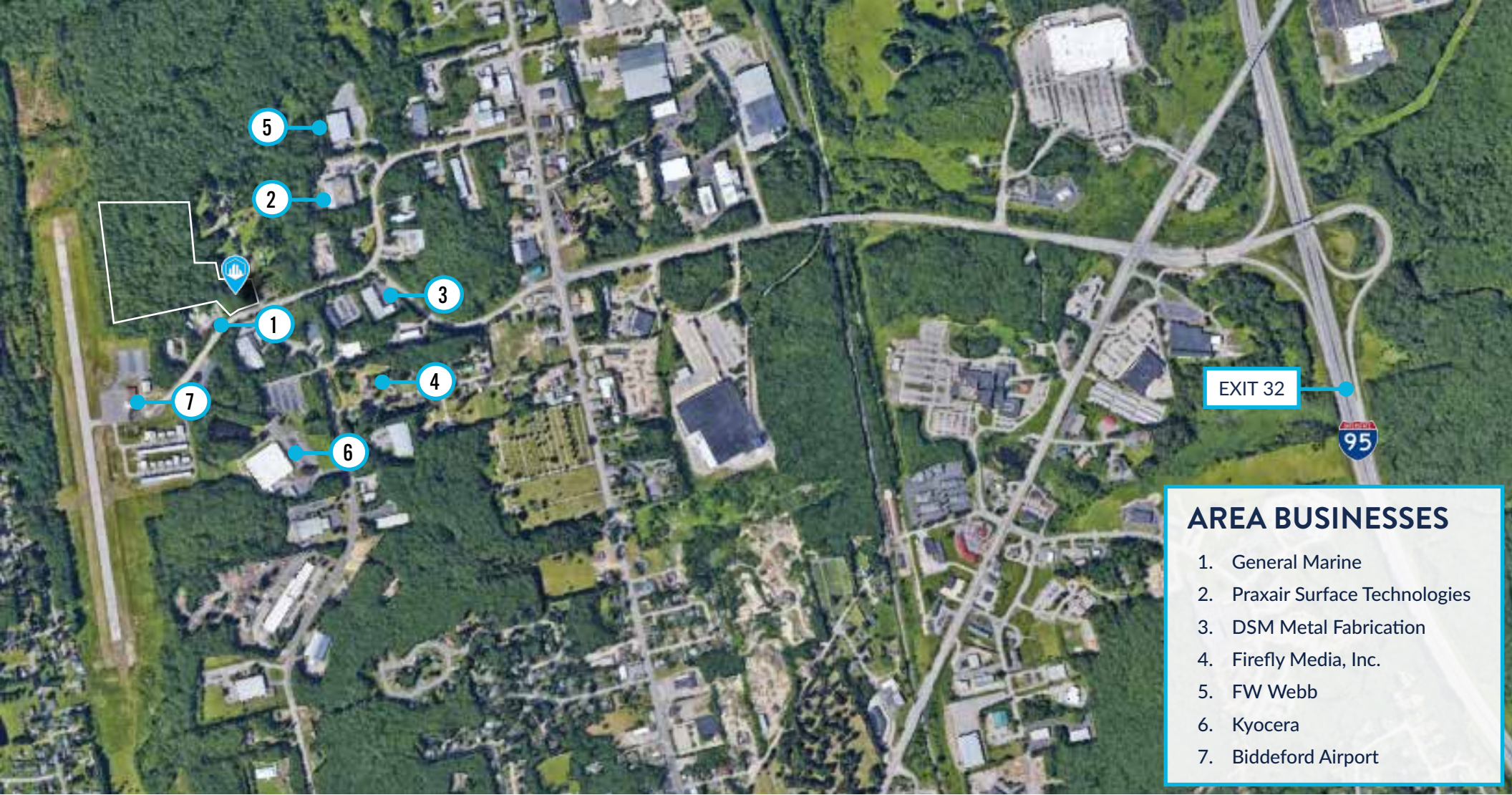




# PROPERTY SURVEY







EXIT 32



## AREA BUSINESSES

1. General Marine
2. Praxair Surface Technologies
3. DSM Metal Fabrication
4. Firefly Media, Inc.
5. FW Webb
6. Kyocera
7. Biddeford Airport

## CONTACT US



**NATE STEVENS**  
Managing Partner,  
Designated Broker  
D: 207.553.1702  
C: 207.272.2385  
[nstevens@boulos.com](mailto:nstevens@boulos.com)



**EMMETT FRUEH**  
Associate  
D: 207.553.1739  
C: 207.749.3127  
[efrueh@boulos.com](mailto:efrueh@boulos.com)

©2025 The Boulos Company, Inc. All rights reserved. This information has been obtained from sources believed reliable, but has not been verified for accuracy or completeness. You should conduct a careful, independent investigation of the property and verify all information. Any reliance on this information is solely at your own risk. The Boulos Company and The Boulos Company logo are service marks of The Boulos Company, Inc. All other marks displayed on this document are the property of their respective owners. Photos herein are the property of their respective owners. Use of these images without the express written consent of the owner is prohibited.

One Portland Square, Suite 400, Portland, ME 04101 | 207.772.1333 | [boulos.com](http://boulos.com)