

# 28 MARCY AVENUE

Between Hope Street & Metropolitan Avenue



3rd Floor - Existing Conditions



**WILLIAMSBURG OFFICE SPACE**

**500 SF UP TO 2,900 SF**

## Available Space

2nd Floor: 500-1,450 sf  
3rd Floor: 1,450 sf

## Possession

Immediate  
December 1, 2025

Rent: Upon request

## Comments

- Walk-up building in burgeoning neighborhood with rapidly growing population
- Centrally located between the Metropolitan Avenue/Lorimer Street **L****G** station; and vicinity of **J****M****Z** subways
- Neighbors include: Whole Foods, Apple, Sweetgreen, Emmy Squared, Knotting Factory . . . . to name a few



## 2nd Floor - Existing conditions



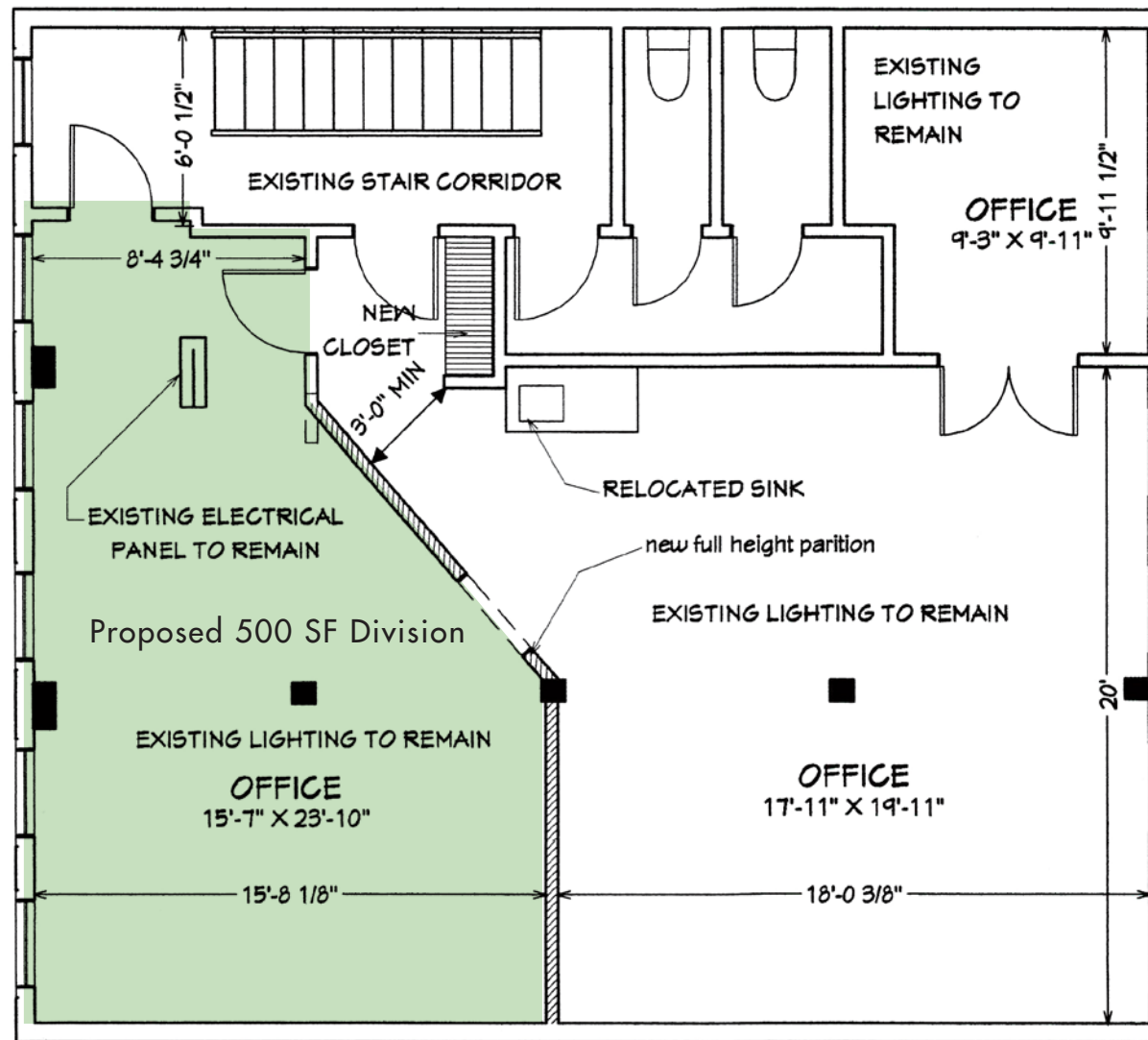
Rear View



Front View

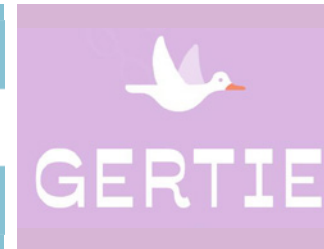


## 2nd Floor - Plan



## A modern kitchen and dining area. The kitchen features white upper and lower cabinets, a dark countertop, and a white refrigerator. A sink with a black faucet is visible on the left. The dining area has a light-colored wooden table and white metal chairs. Large windows with black frames are on the right wall, and two white pendant lights hang from the ceiling. The floor is made of light-colored wood.





St. Anselm



by CHLOE.

sweetgreen®

EMMY SQUARED



For further information and/or inspection contact exclusive broker:

**Ben Waller**

Partner

212.400.9515

[bwaller@absre.com](mailto:bwaller@absre.com)

**Anthony Diorio**

Associate

518.894.1605

[adiorio@absre.com](mailto:adiorio@absre.com)

ABS Partners Real Estate • 200 Park Avenue South, 10th Floor, New York, NY 10003 • 212.400.6060 • [www.absre.com](http://www.absre.com)