

Leasing by:



Owned & Managed by:

**welltower**

Click or Scan Below



FOR INFORMATION:

**KYLE CHURCH**  
Lightpoint Real Estate Partners

205.919.1528  
kyle@lightpointcre.com

MEDICAL OFFICE SPACE

**FOR LEASE**



**Princeton I**

801 PRINCETON AVENUE | BIRMINGHAM, AL

[medicaloffice.welltower.com](http://medicaloffice.welltower.com)

# EXECUTIVE SUMMARY

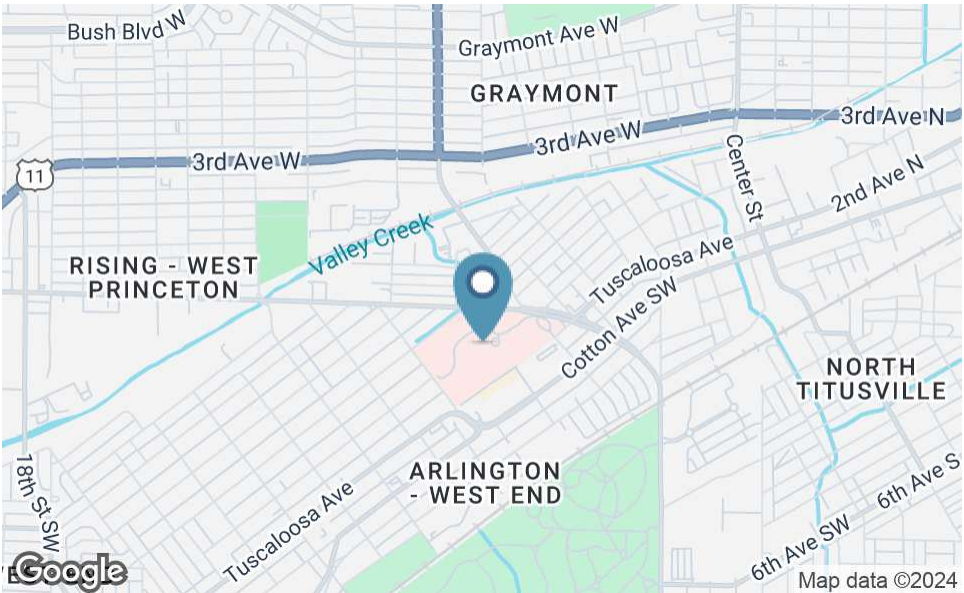


## Location Description

Located on the campus of Princeton Baptist Medical Center.

## Property Highlights

- 252,000 SF Medical Offices
- Offers a variety of medical specialties and diagnostic services including cancer treatment, cardiac services, diagnostic imaging, neurosurgery, pulmonary medicine, and wound care



**KYLE CHURCH**  
205.919.1528  
kyle@lightpointcre.com



# FLOOR PLANS

# welltower

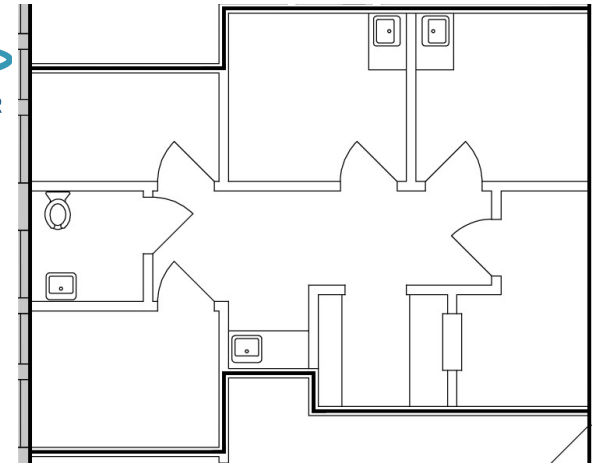
**360°**  
CLICK TO VIEW TOUR



201

3,435 RSF

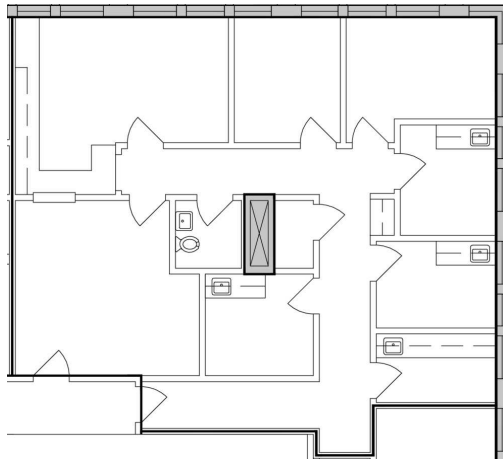
**360°**  
CLICK TO VIEW TOUR



205

767 RSF

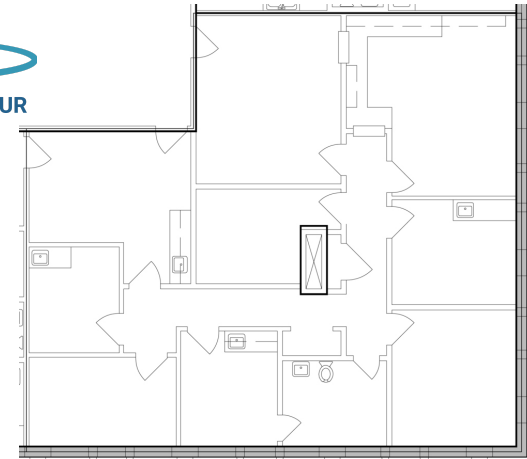
**360°**  
CLICK TO VIEW TOUR



210

1,657 RSF

**360°**  
CLICK TO VIEW TOUR



328

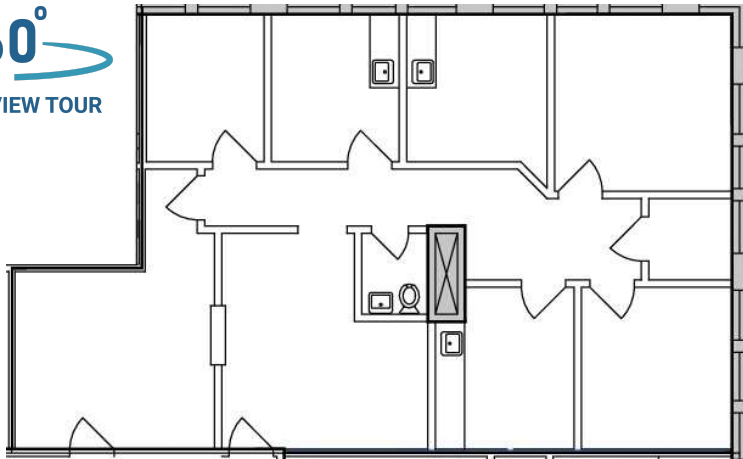
2,195 RSF

**KYLE CHURCH**  
205.919.1528  
kyle@lightpointcre.com

# FLOOR PLANS

# welltower

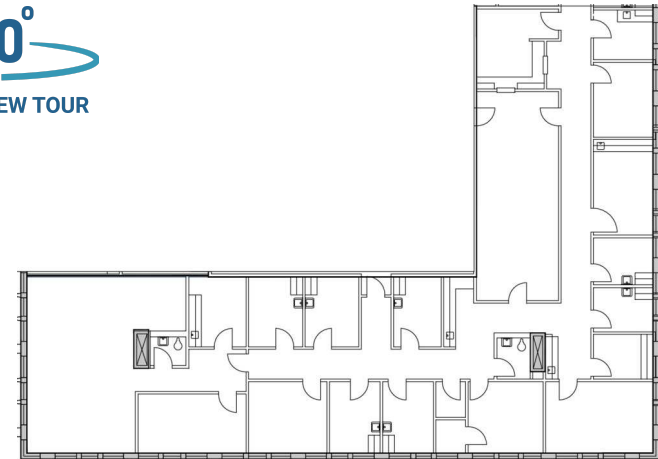
**360°**  
CLICK TO VIEW TOUR



332

1,614 RSF

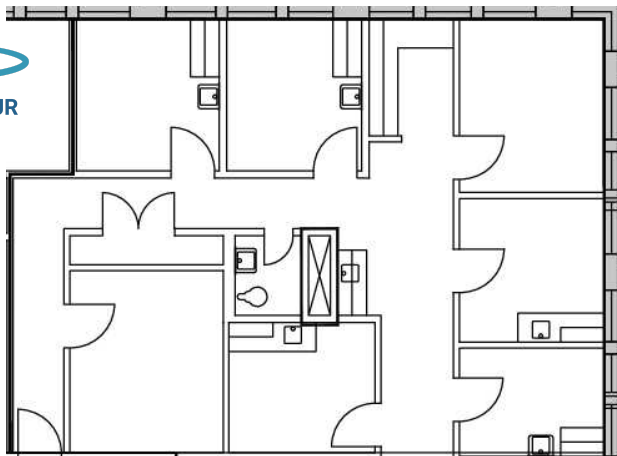
**360°**  
CLICK TO VIEW TOUR



406

5,399 RSF

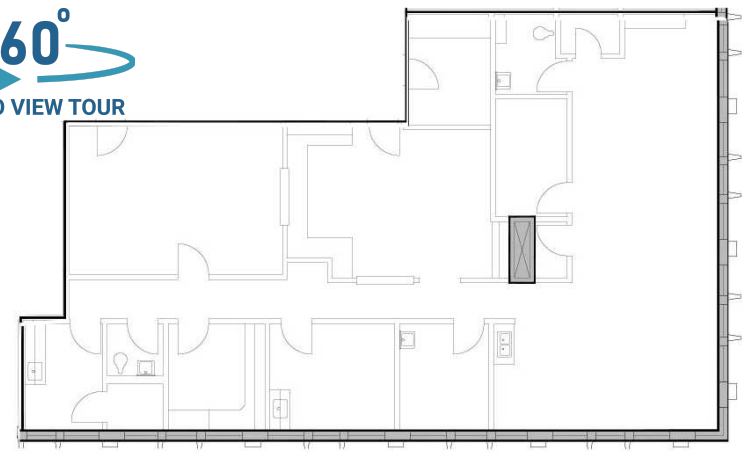
**360°**  
CLICK TO VIEW TOUR



415

1,617 RSF

**360°**  
CLICK TO VIEW TOUR



424

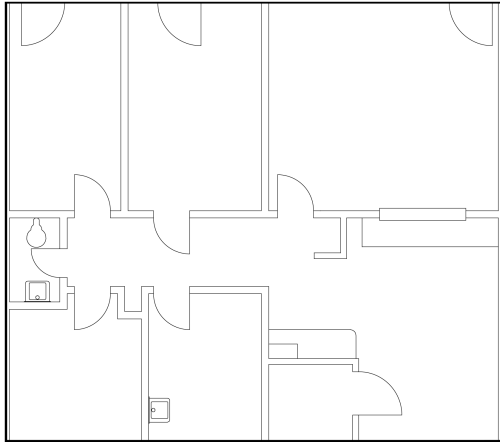
2,858 RSF

**KYLE CHURCH**  
205.919.1528  
kyle@lightpointcre.com

# FLOOR PLANS

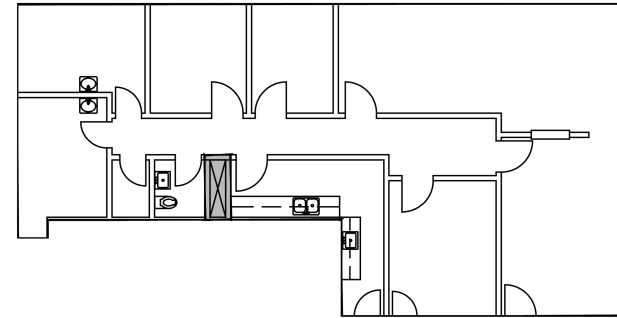
welltower

360°  
CLICK TO VIEW TOUR



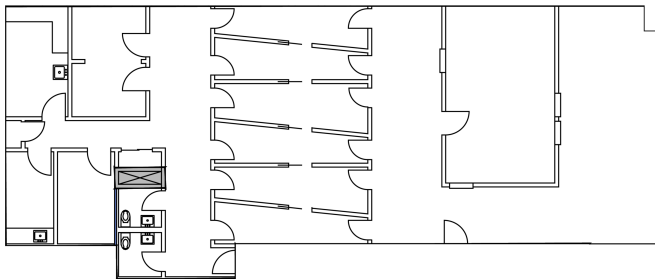
426  
1,317 RSF

360°  
CLICK TO VIEW TOUR



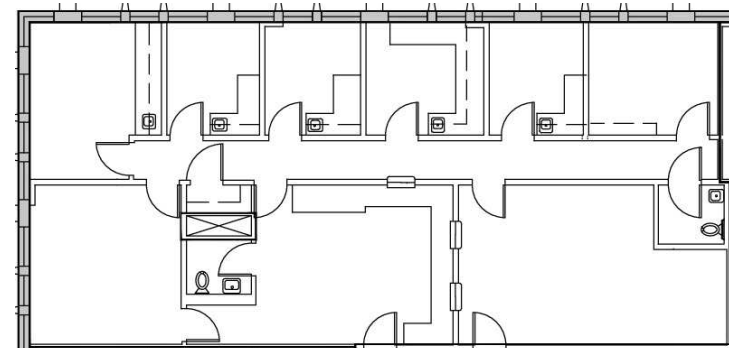
520  
1,835 RSF

360°  
CLICK TO VIEW TOUR



530  
3,286 RSF

360°  
CLICK TO VIEW TOUR

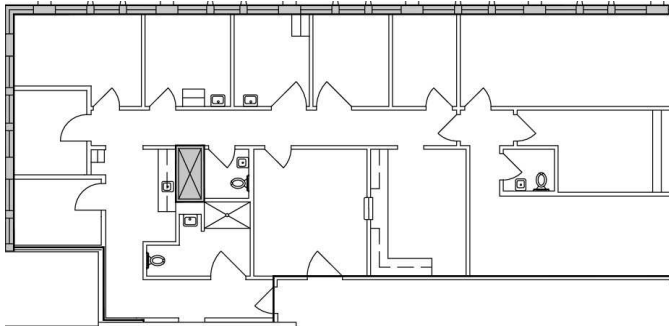


615  
2,358 RSF

**KYLE CHURCH**  
205.919.1528  
kyle@lightpointcre.com

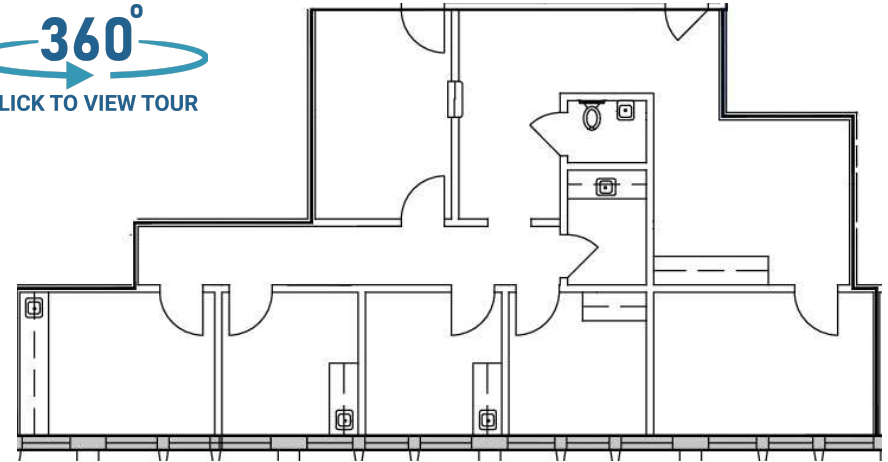
# FLOOR PLANS

# welltower



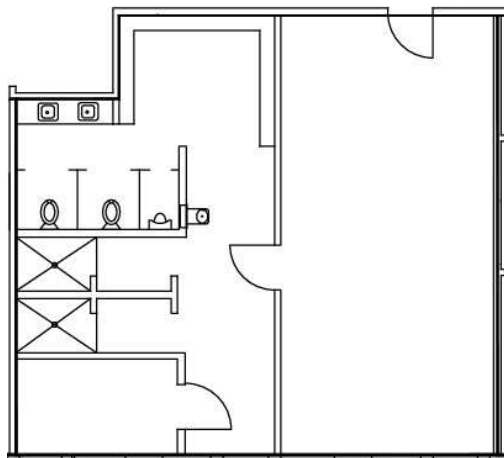
620

3,121 RSF



630

1,693 RSF



801

1,126 RSF

**KYLE CHURCH**  
205.919.1528  
kyle@lightpointcre.com

# DEMOGRAPHICS MAP & REPORT



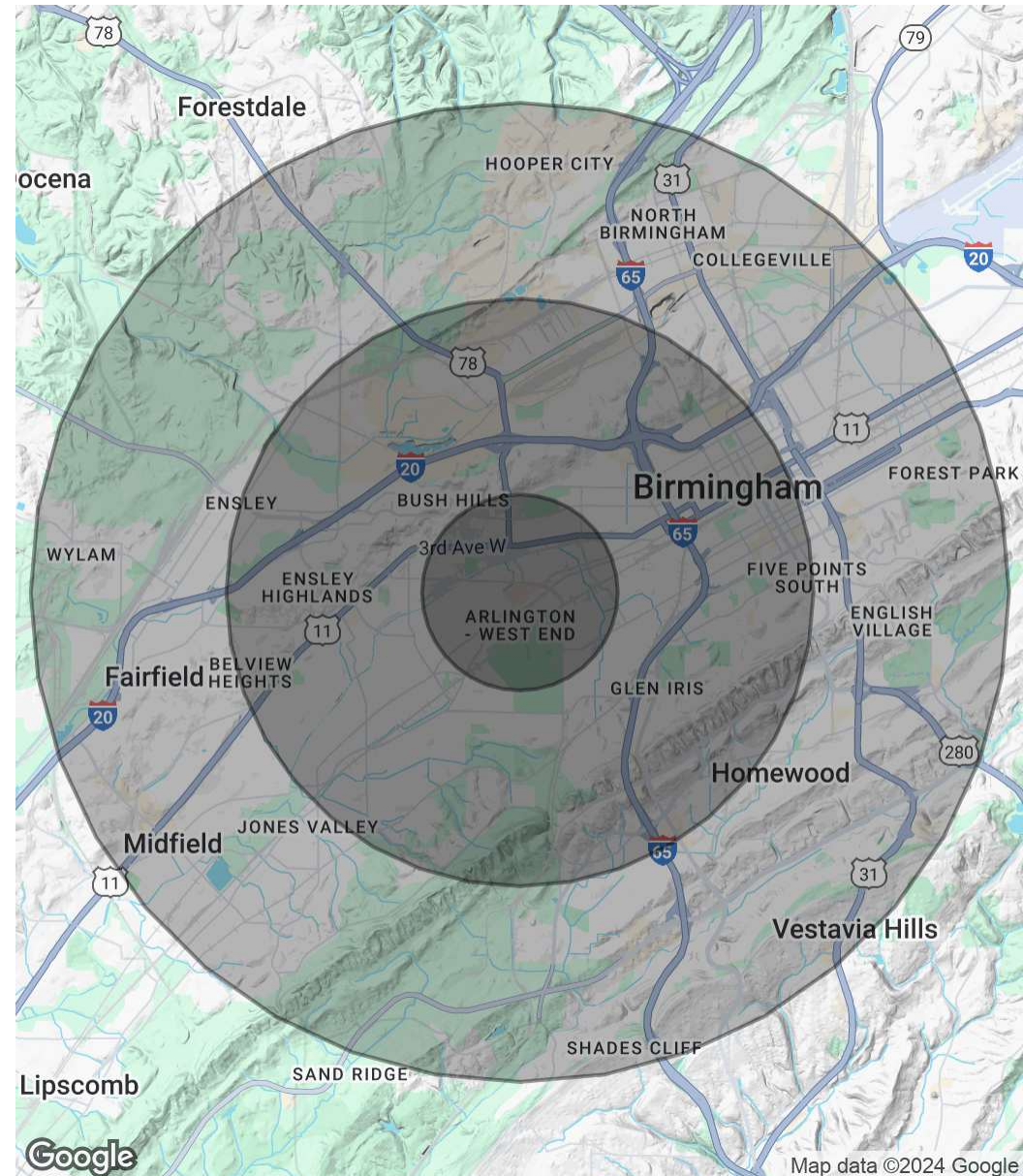
## Population

	1 Mile	3 Miles	5 Miles
Total Population	11,549	82,854	187,517
Average Age	34.9	36.0	35.0
Average Age (Male)	32.8	34.3	33.7
Average Age (Female)	36.0	37.6	36.2

## Households & Income

	1 Mile	3 Miles	5 Miles
Total Households	4,676	33,911	77,144
# of Persons per HH	2.5	2.4	2.4
Average HH Income	\$27,996	\$35,904	\$46,108
Average House Value	\$76,694	\$80,435	\$119,699

2020 American Community Survey (ACS)



**KYLE CHURCH**  
 205.919.1528  
 kyle@lightpointcre.com



Map data ©2024 Google