

For sale

12,000 SF Available

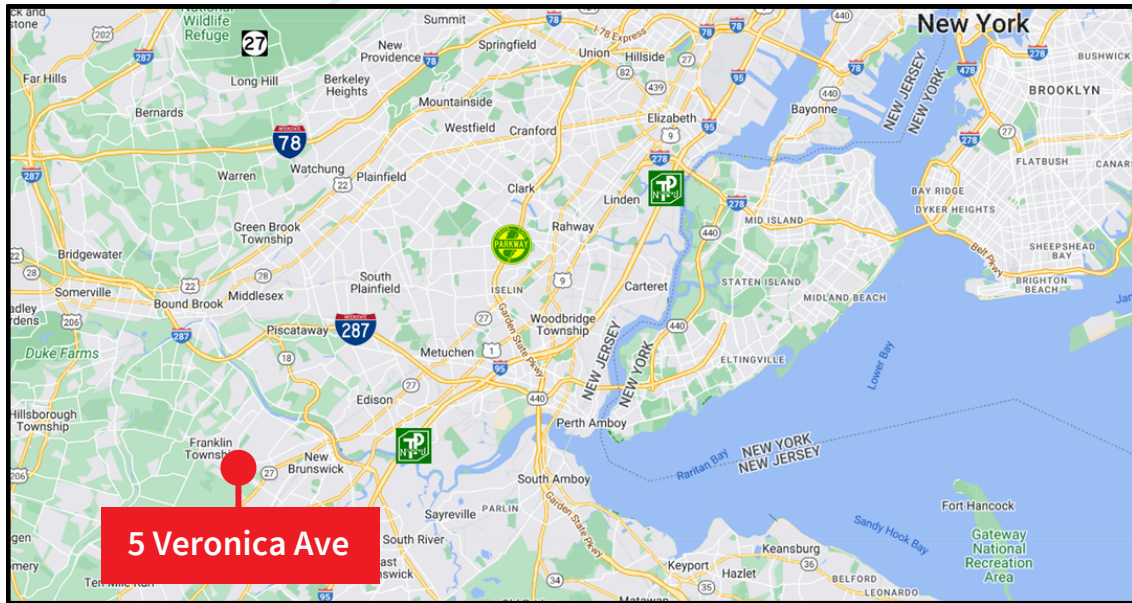
5 Veronica Ave.
Somerset, NJ



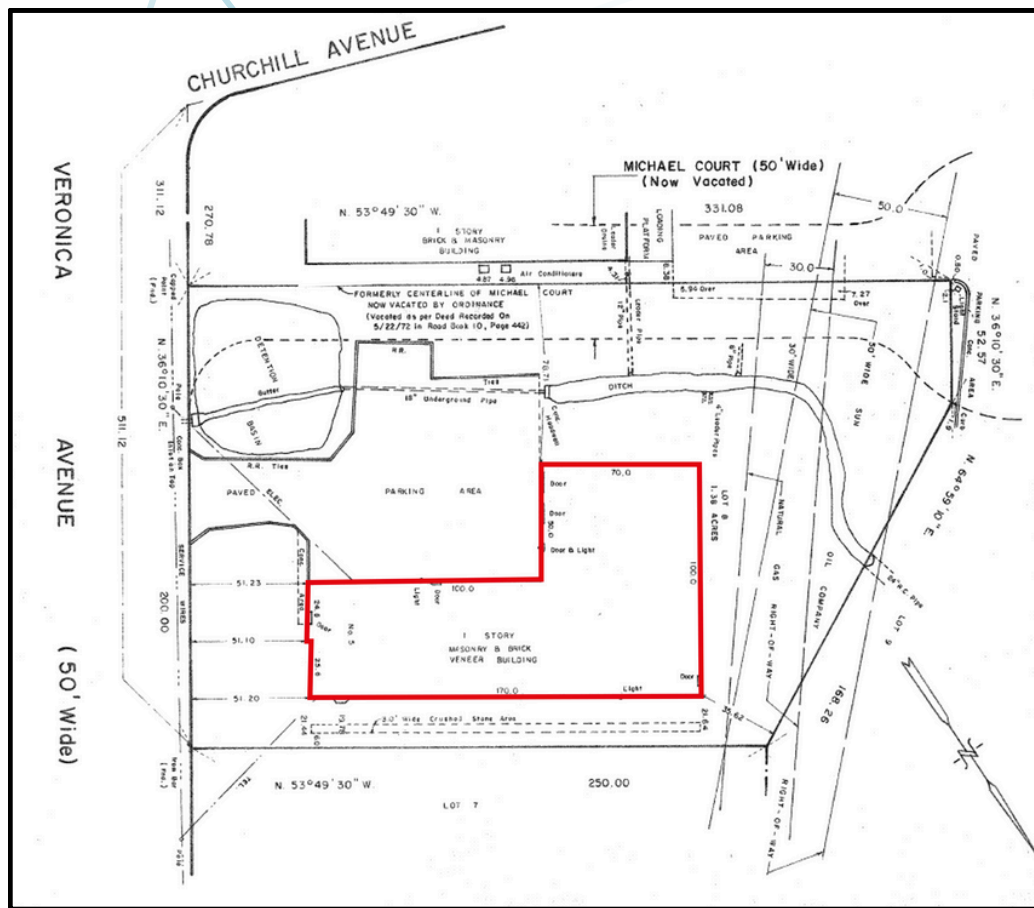
Property specifications

- 12,000 sf free standing industrial facility on 1.37 acres available for sale
- +/- 4,000 sf offices
- +/- 8,000 sf warehouse
- 14' clear ceiling height
- 2 (10' x 12') drive-in doors
- Built 1980
- 25 car parking spaces
- Wet sprinkler system
- Suspended gas heaters
- Zoning: "B-I" Business & Industry

Location map



Site plan



Ryan Buerkle
 Vice President
 ryan.buerkle@jll.com
 + 1 908 304 4348

Gary Politi
 Senior Managing Director
 gary.politi@jll.com
 +1 908 391 9059