



9,000 ± SF  
AVAILABLE

FOR LEASE

LEITCHFIELD PLACE  
LEITCHFIELD, KENTUCKY

**HOGAN**  
REAL ESTATE



4,500 SF AVAILABLE

# PROPERTY DESCRIPTION

LEITCHFIELD PLACE  
LEITCHFIELD, KENTUCKY



**9,000 ± SF End Cap  
& 4,500 ± SF INLINE**

Space Available  
for Lease



**Strategically  
LOCATED**

In Leitchfield's Dominant  
Retail Corridor

## Features

- + 9,000 ± SF end cap available (5,000 SF finished space + 4,000 SF unfinished space)
- + 4,500 ± SF inline space available for lease
- + Excellent visibility along Elizabethtown Rd
- + Center tenants include Label Shopper, Dollar Tree, and Domino's
- + Property is zoned C-1 and consists of 2 parcels with a total acreage of 7.35 ± acres
- + Immediate area restaurants and retailers include Vendors' Village of Leitchfield, Sonic Drive-in, Yamato Japanese Steak House, El Patron Mexican Grill, Papa John's Pizza, Walmart Supercenter, Tractor Supply, O'Reilly Auto Parts, Walgreens and AT&T.
- + The trade area features excellent access to the east and west via the Western Kentucky Parkway.
- + Leitchfield, Kentucky is located approximately 35 miles west of Elizabethtown, KY and 75 miles southwest of Louisville, KY. Leitchfield is a protected market that services all of Grayson County and draws from up to a 30-mile radius and features many tourist attractions such as the 637-acre Rough River Dam State Park.

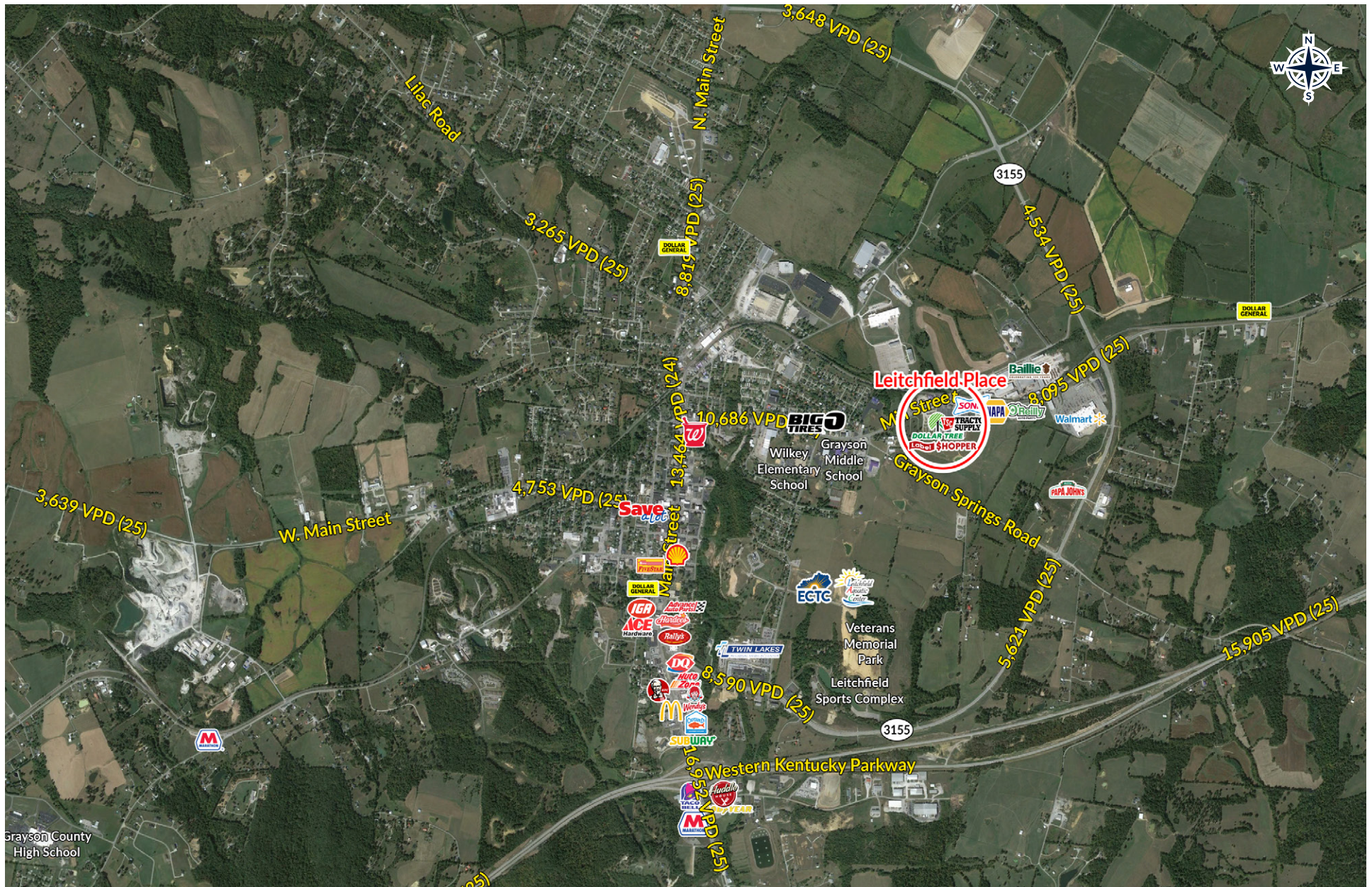
## Demographics

	5 Mile	10 Miles	15 Miles
Population	12,388	21,583	35,598
Median Household Income	\$45,993	\$48,904	\$51,345



# TRADE AREA AERIAL

LEITCHFIELD PLACE  
LEITCHFIELD, KENTUCKY





# IMMEDIATE AREA AERIAL

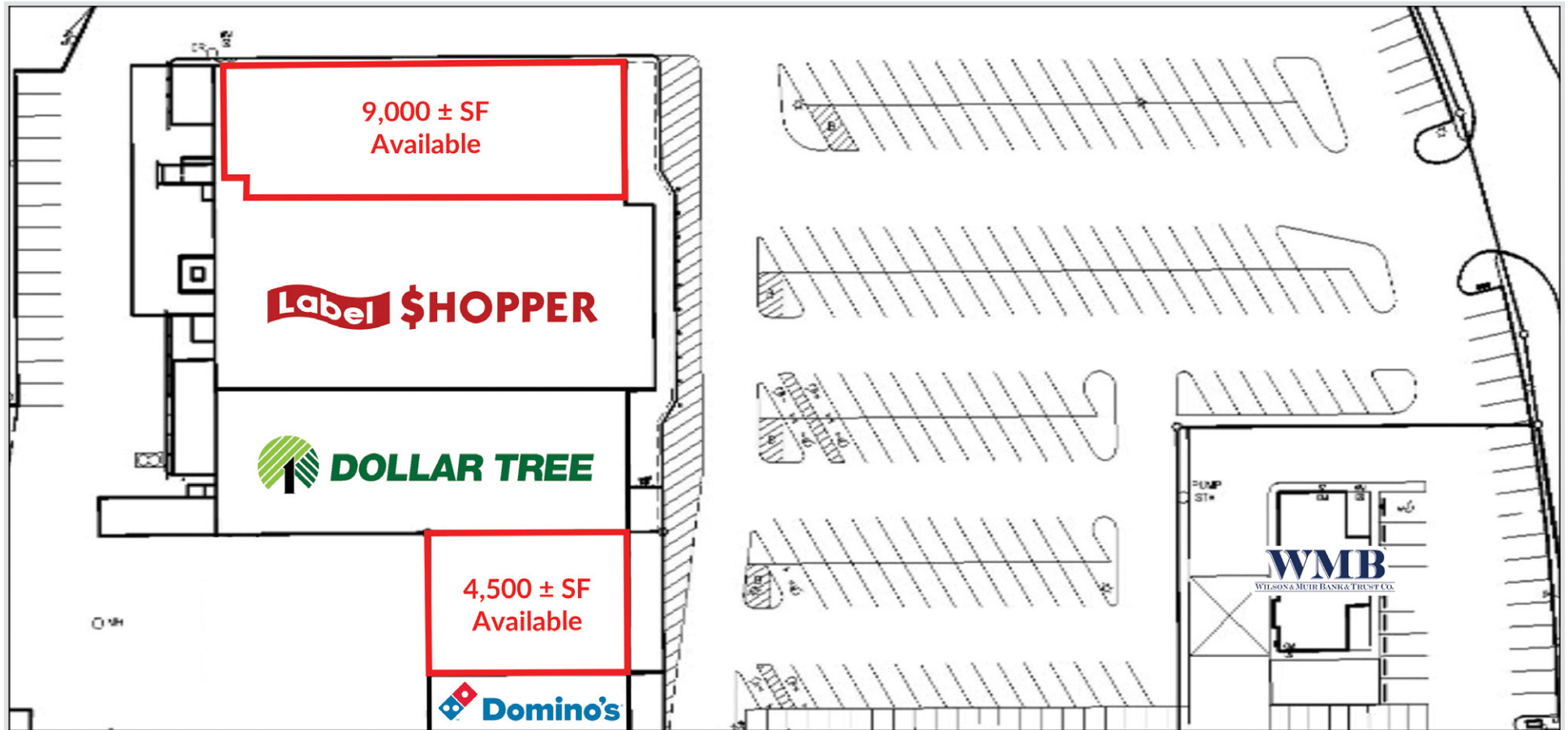
LEITCHFIELD PLACE  
LEITCHFIELD, KENTUCKY





## SITE PLAN

LEITCHFIELD PLACE  
LEITCHFIELD, KENTUCKY



## HOGAN REAL ESTATE PROPERTY CONTACT



Ashley McCarty

D: 502.271.5815

M: 502.426.1050

F: 502.426.1223

amccarty@hogandev.com

**HOGAN**  
REAL ESTATE

