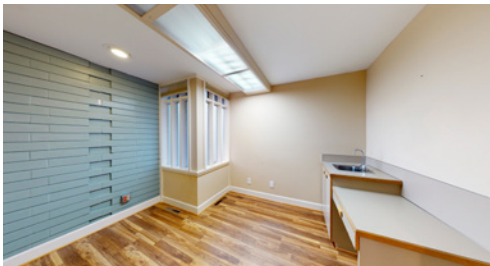




**STAND-ALONE-MEDICAL OFFICE BUILDING**



**520 LILLY ROAD NE, OLYMPIA, WA | BUILDING 2**

**LISTING INFORMATION**

A must-see, two-story medical office building comprised of two exam rooms, a private ADA restroom, a reception desk, a waiting area, and a secondary entrance. The square footage does not include the 450 SF basement, which is primarily open, with storage closets and a kitchenette with a full oven and compact washer & dryer.

It is well-suited for medical, wellness, or beauty users, among others.

**624 SF**

**\$1,800 PER MONTH**

**CBA# 33860371**



[rants.group/520LillyB2vt](https://rants.group/520LillyB2vt)



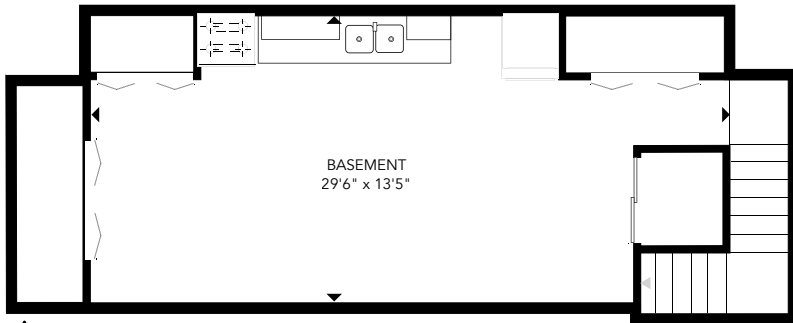
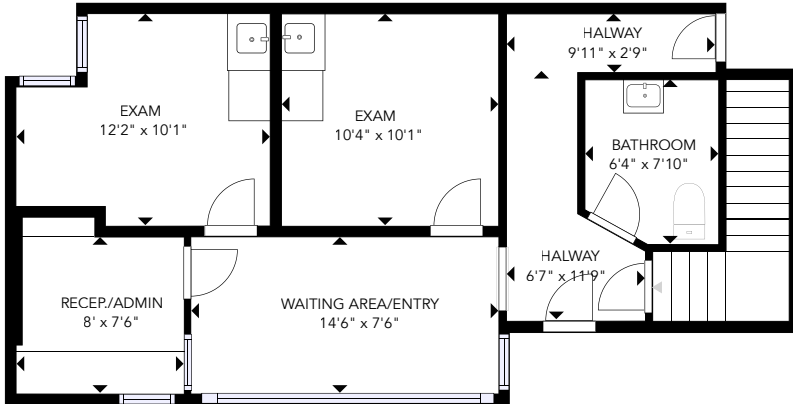
**Jami Topping**  
BROKER  
(360) 763-4995  
[jami@rantsgroup.com](mailto:jami@rantsgroup.com)

**Danielle Rants, CCIM**  
VP, MANAGING BROKER  
360-352-7822  
[danielle@rantsgroup.com](mailto:danielle@rantsgroup.com)

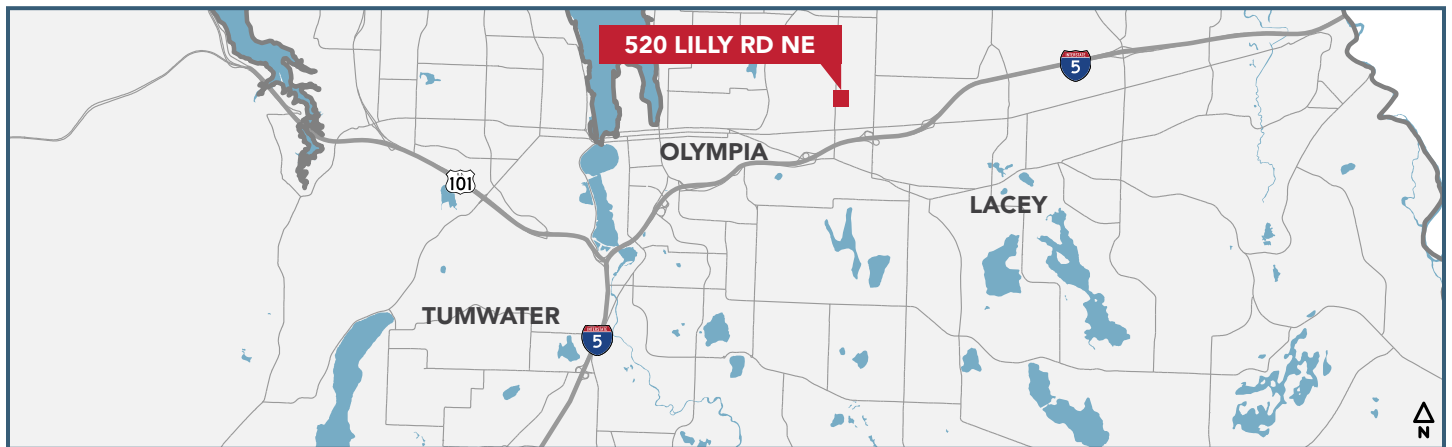
**360-943-8060**  
**RANTSGROUP.com**

This information, while obtained from sources we deem reliable, is not guaranteed. It is provided without any representation, warranty or guarantee, expressed or implied as to its accuracy. Prospective buyer or tenant should conduct an independent investigation and verification of all matters deemed to be material, including, but not limited to, statements of income and expenses. Consult your attorney, accountant, or other professional advisor.

520 LILLY ROAD NE, OLYMPIA, WA | BUILDING 2



THIS FLOORPLAN IS NOT TO SCALE  
SIZES AND DIMENSIONS ARE APPROXIMATE, ACTUAL MAY VARY.



CONTACT

**Jami Topping**  
BROKER  
360-763-4995  
jami@rantsgroup.com

**Danielle Rants, ccim**  
VP, MANAGING BROKER  
360-352-7822  
danielle@rantsgroup.com



rantsgroup.com/520LillyB2vt

This information, while obtained from sources we deem reliable, is not guaranteed. It is provided without any representation, warranty or guarantee, expressed or implied as to its accuracy. Prospective buyer or tenant should conduct an independent investigation and verification of all matters deemed to be material, including, but not limited to, statements of income and expenses. Consult your attorney, accountant, or other professional advisor.

360-943-8060 | RANTSGROUP.com



520 LILLY ROAD NE, OLYMPIA, WA | BUILDING 2



FRONT OF BUILDING & CUSTOMER PARKING



ADDITIONAL PARKING



ONE OF TWO EXAM ROOMS



PRIMARY ENTRY



BASEMENT WITH KITCHENETTE



WAITING AREA & RECEPTION

## CONTACT

**Danielle Rants, ccim**  
VP, MANAGING BROKER  
360-352-7822  
danielle@rantsgroup.com



[rants.group/520LillyB2vt](https://rants.group/520LillyB2vt)

This information, while obtained from sources we deem reliable, is not guaranteed. It is provided without any representation, warranty or guarantee, expressed or implied as to its accuracy. Prospective buyer or tenant should conduct an independent investigation and verification of all matters deemed to be material, including, but not limited to, statements of income and expenses. Consult your attorney, accountant, or other professional advisor.

360-943-8060 | [RANTSGROUP.com](https://RANTSGROUP.com)