

# First Class Office For Sublease In Philadelphia

1760 Market Street, Philadelphia, PA



## CONTACT US

### **Todd Monahan**

*Executive VP & Managing Director*  
610.213.1647  
todd.monahan@wolfcre.com

### **Joe Fox**

*Senior Advisor*  
484.772.5889  
joseph.fox@wolfcre.com



The foregoing information was furnished to us by sources which we deem to be reliable, but no warranty or representation is made as to the accuracy thereof. Subject to correction of errors, omissions, change of price, prior sale or withdrawal from market without notice.



**Wolf Commercial Real Estate**  
**www.WolfCRE.com**

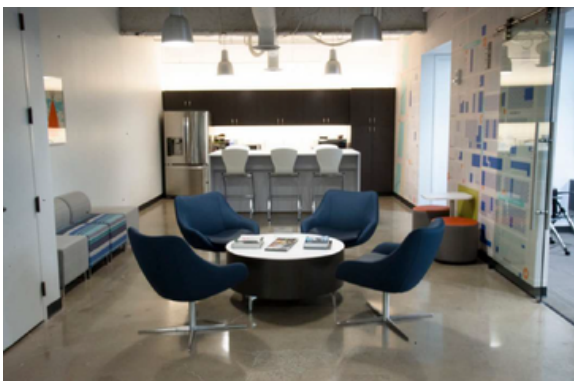


*1760 Market Street Main Lobby*



## SUBLEASE INFORMATION

- Term through April 30, 2029
- 5,636 SF Available
- Ideal for Professional Services Firm
- Well-appointed reception area
- Large conference room (10 seats)
- Medium conference room (6 seats)
- Kitchen/Pantry area
- 14 private offices with 2 corner offices
- 9 work stations (6' x 6')
- Storage IT room



*\*Shared Stockton Kitchen Available to Tenants*

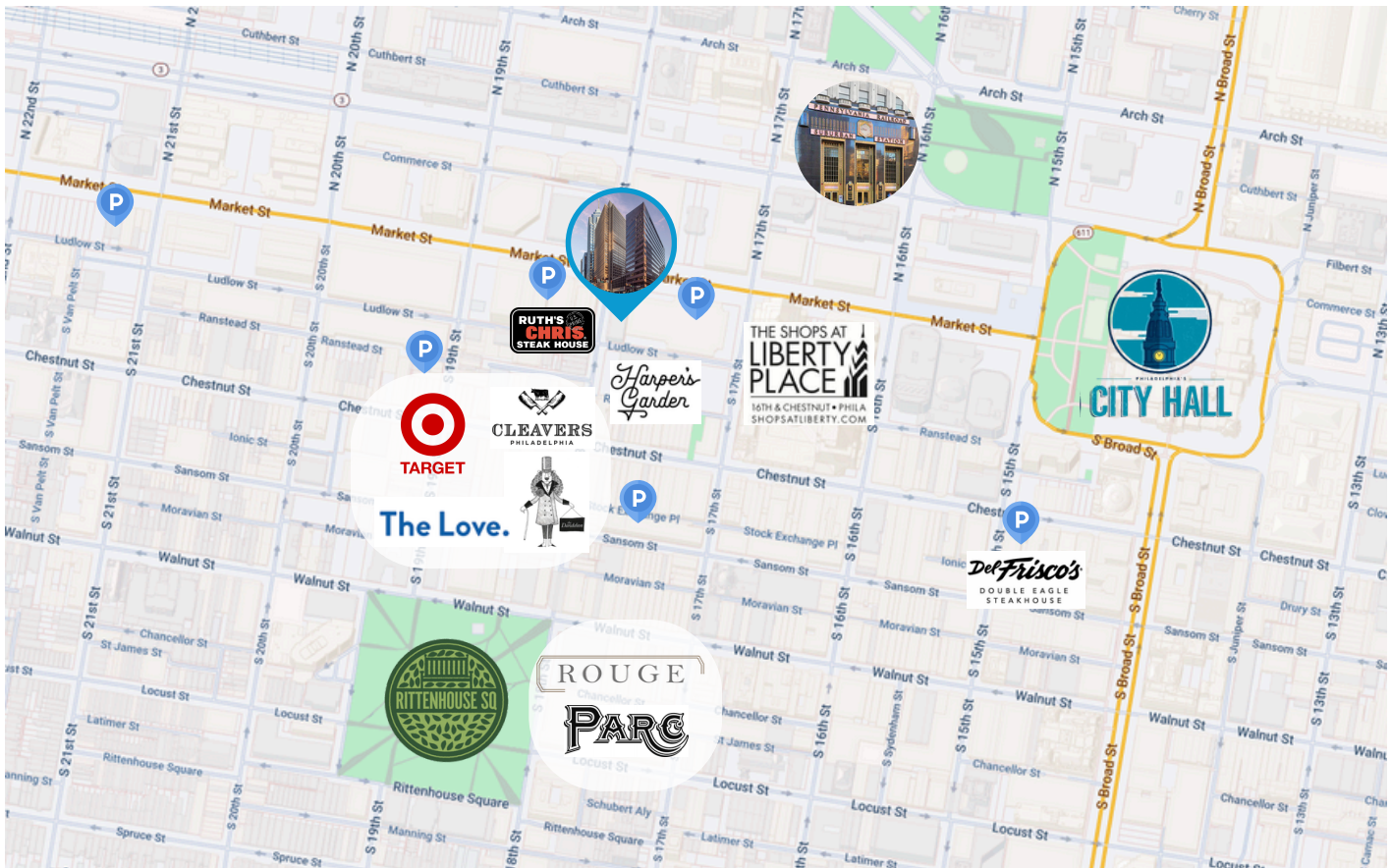
## BUILDING AMENITIES

- On-site building management
- Shared tenant lounge and conference facility
- Designated safe secure bike room
- Professional lobby security 24/7/365

The foregoing information was furnished to us by sources which we deem to be reliable, but no warranty or representation is made as to the accuracy thereof. Subject to correction of errors, omissions, change of price, prior sale or withdrawal from market without notice.

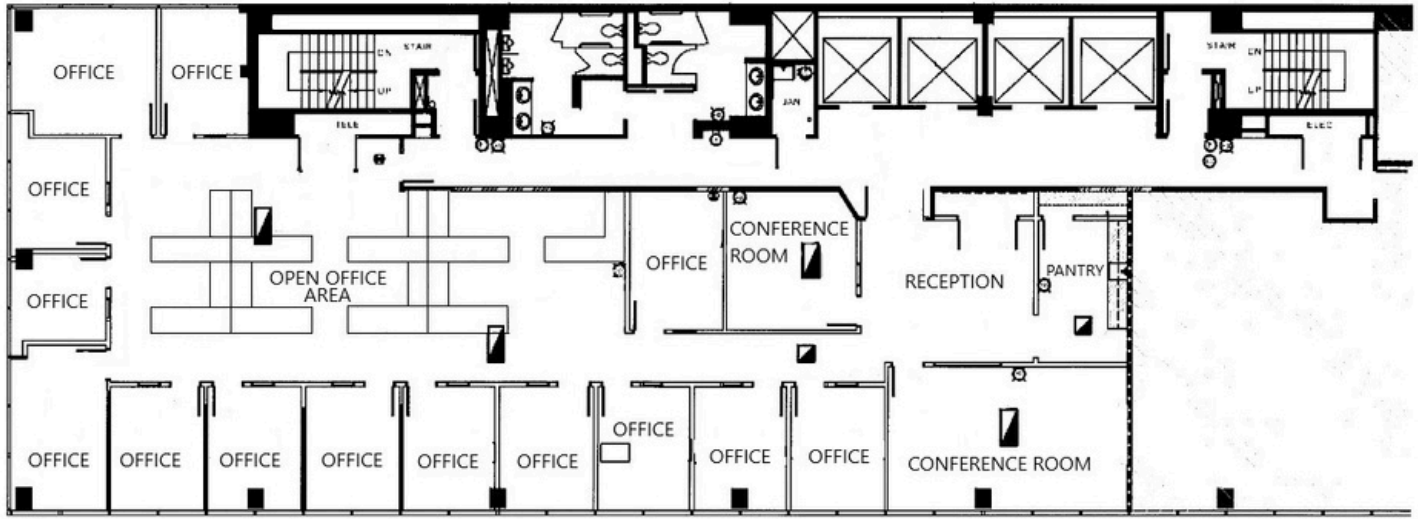
## LOCATION HIGHLIGHTS

- Prestigious Market Street Address
- Two blocks from Rittenhouse Square
- Three blocks from City Hall
- Surrounded by numerous restaurants and retailers
- Two blocks from Suburban Station
- Abundant public parking garages within one block



The foregoing information was furnished to us by sources which we deem to be reliable, but no warranty or representation is made as to the accuracy thereof. Subject to correction of errors, omissions, change of price, prior sale or withdrawal from market without notice.

FLOOR PLAN



ADDITIONAL PICTURES



The foregoing information was furnished to us by sources which we deem to be reliable, but no warranty or representation is made as to the accuracy thereof. Subject to correction of errors, omissions, change of price, prior sale or withdrawal from market without notice.