

PALMETTO LAKES INDUSTRIAL PARK #16

15900-15998 NW 48TH AVE, MIAMI GARDENS, FL 33014

PROPERTY SUMMARY

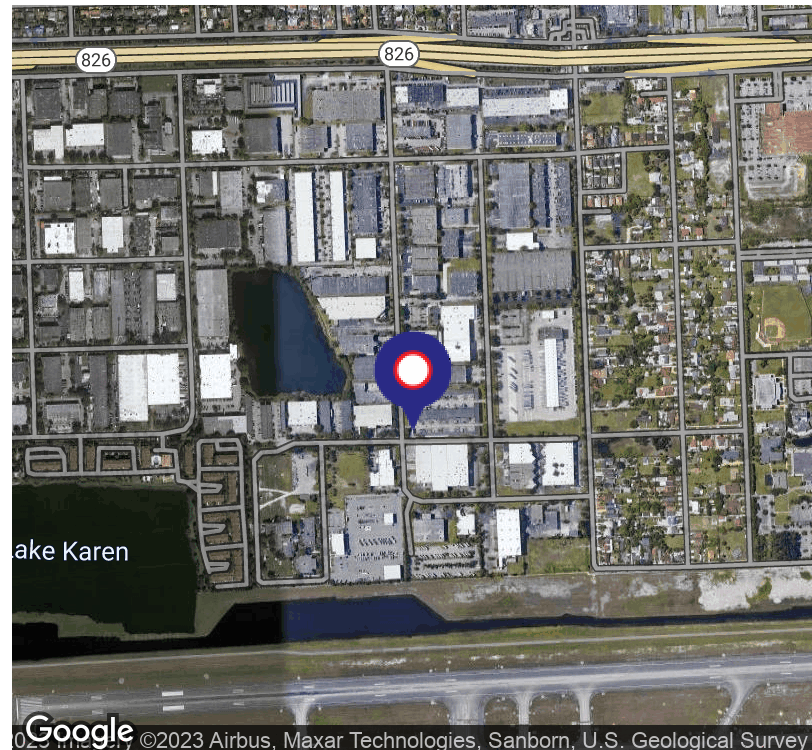


PROPERTY DESCRIPTION

The Palmetto Lakes Industrial Park is an approximately 275,408 square foot group of warehouses located on the south side of the Palmetto Expressway and just north of the Opa Locka Executive Airport. This location is centrally located between 3 major airports, near the Opa Locka Executive Airport, as well as seaports. Close proximity to the Golden Glades interchange, just 4 exits from the I-95 Expressway. It is comprised of seven buildings, four of which are equipped with fire sprinkler systems. Three of the buildings in the industrial park have 10' x 14' dock height loading doors, and ceiling heights range from 16' up to 22'. The construction is all concrete masonry with Twin-T roof decks. Warehouse sizes range from 1,000 square feet up to 40,000 square feet. There are 75 businesses in the Palmetto Lakes Industrial Park, which is an ideal location for distribution, wholesale, manufacturing, aviation, and service providers. Zoned I-1 for Light Industrial.

PROPERTY HIGHLIGHTS

- One mile from FL 826 (Palmetto Expressway)
- Close proximity to the Opa Locka Executive Airport
- Gated parking lot
- 16' clear ceiling height
- 10' x 14' grade level overhead doors
- 3 phase power
- Minimum lease term 24 months



RUBEN FURMAN

Miami Gardens Manager & Leasing Agent
305.793.8428
ruben@levyrai.com

JOSH LEVY

Chief Operating Officer
954.491.5505
josh@levyrai.com



FOR LEASE

PALMETTO LAKES INDUSTRIAL PARK #16

15900-15998 NW 48TH AVE, MIAMI GARDENS, FL 33014

ADDITIONAL PHOTOS



RUBEN FURMAN

Miami Gardens Manager & Leasing Agent
305.793.8428
ruben@levyrai.com

JOSH LEVY

Chief Operating Officer
954.491.5505
josh@levyrai.com

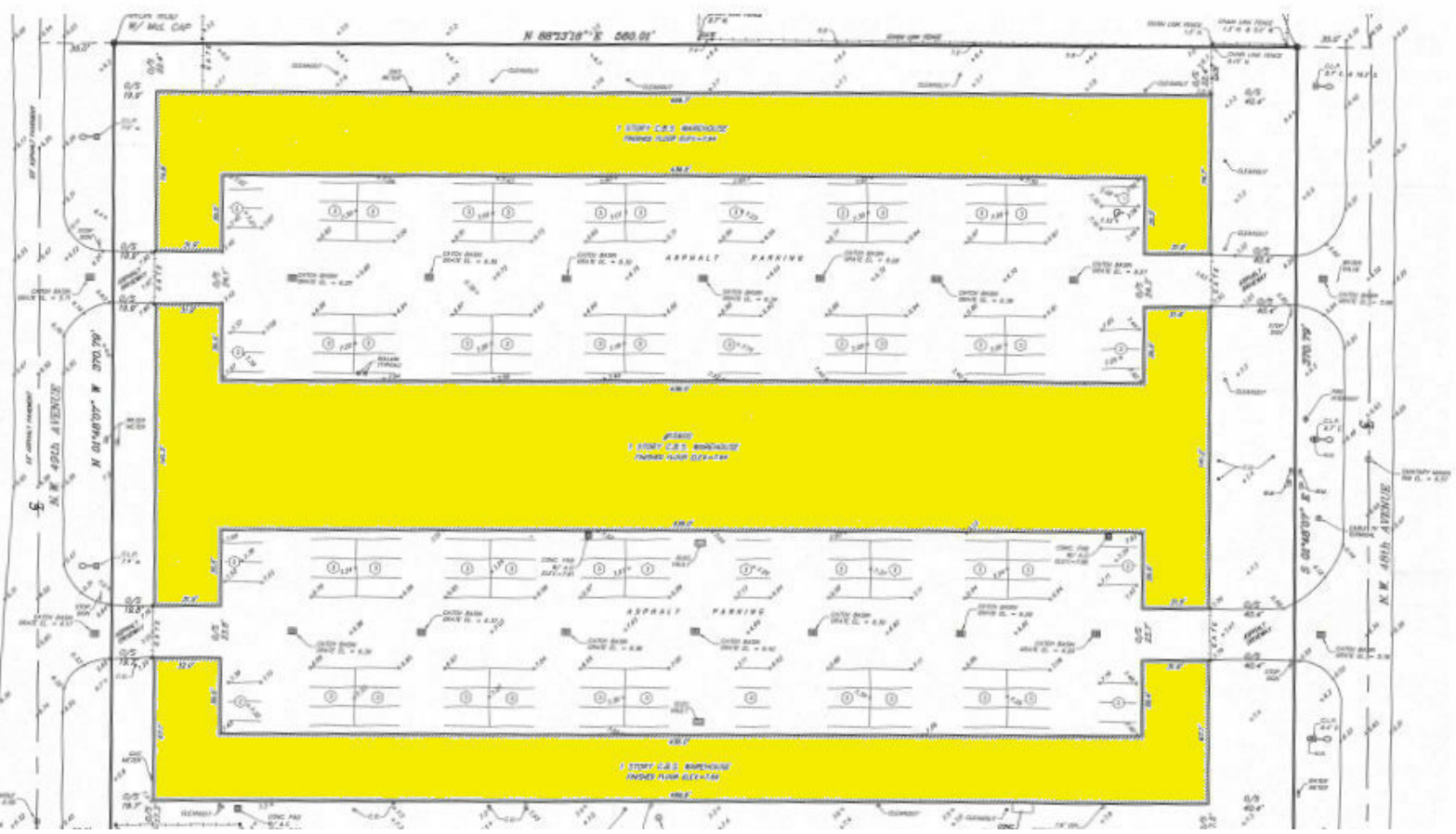


FOR LEASE

PALMETTO LAKES INDUSTRIAL PARK #16

15900-15998 NW 48TH AVE, MIAMI GARDENS, FL 33014

SITE PLAN



RUBEN FURMAN
 Miami Gardens Manager & Leasing Agent
 305.793.8428
 ruben@levyrai.com

JOSH LEVY
 Chief Operating Officer
 954.491.5505
 josh@levyrai.com

