



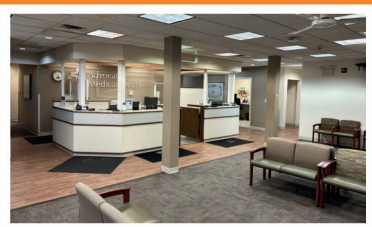
4900 MAIN STREET  
DOWNERS GROVE, IL

## COMMERCIAL BUILDING

## FOR LEASE

### LEASE TERMS NEGOTIABLE

Owner is IL Licensed  
Real Estate Broker

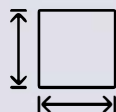


## ABOUT THE PROPERTY

- Excellent visibility with building signage at the intersection of Main and Franklin streets
- Part of Downers Grove Downtown business district
- Approximately 26 dedicated parking spaces
- Under two miles south of Good Samaritan Hospital
- Blocks from Metra train station
- Zoning: Downtown Business (DB)
- Non-medical uses considered
- Medical build-out in-place

Available early 2026  
(subject to change without notice)

## PROPERTY DETAIL



APPROX.  
8,132 SF



18 CLINICAL ROOMS  
WITH SINKS



RECEPTION  
AREA



LARGE WAITING  
ROOM

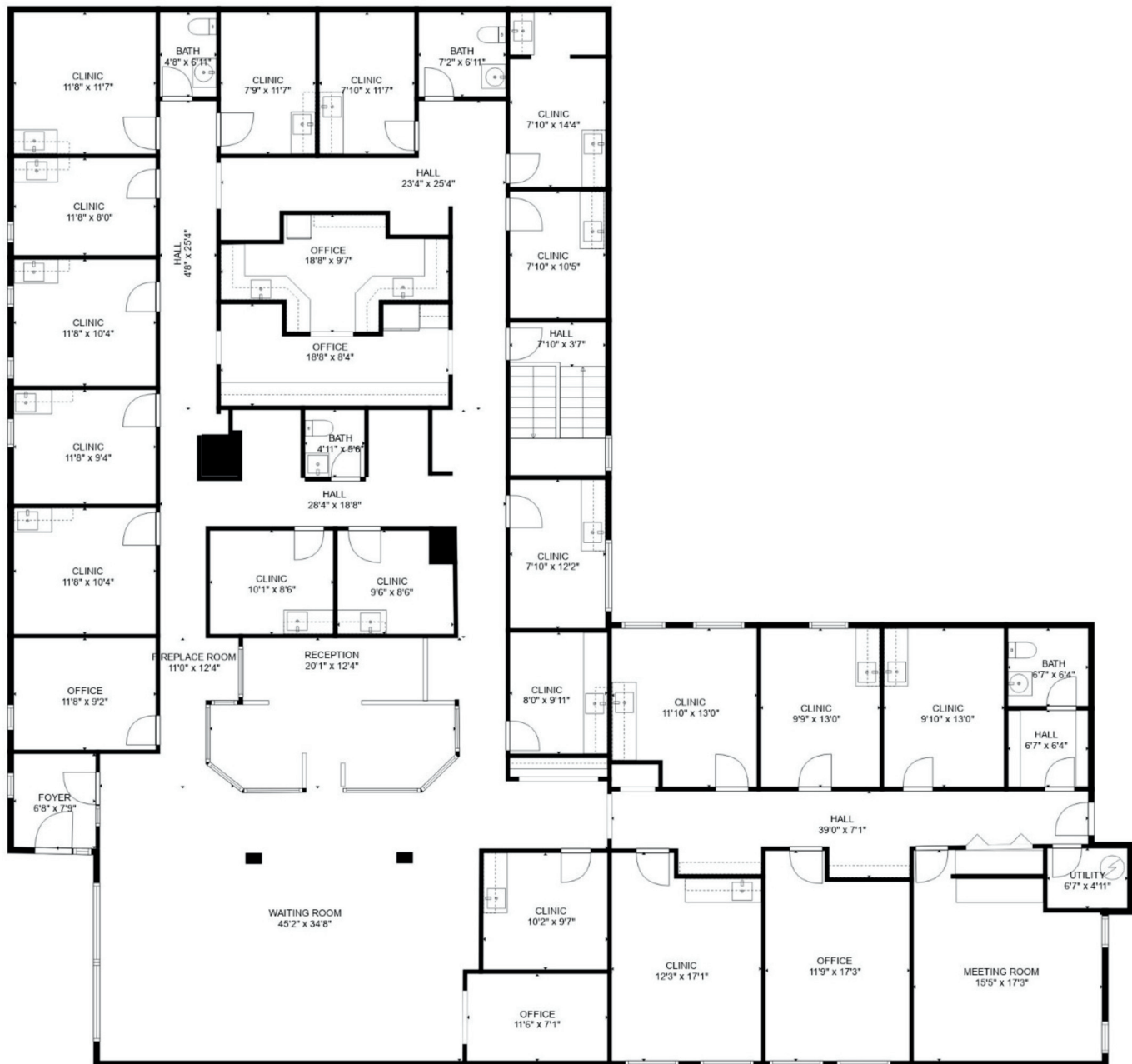
**FOR MORE INFORMATION,  
CONTACT:**

Jeffrey Clousing  
Executive Vice President  
(630) 518-9355 X6

[jeff@capitalrep.com](mailto:jeff@capitalrep.com)  
[www.capitalrep.com](http://www.capitalrep.com)

# 4900 MAIN STREET, DOWNERS GROVE, IL

## FIRST FLOOR



# CAPITAL

REAL ESTATE PARTNERS

**FOR MORE INFORMATION,  
CONTACT:**

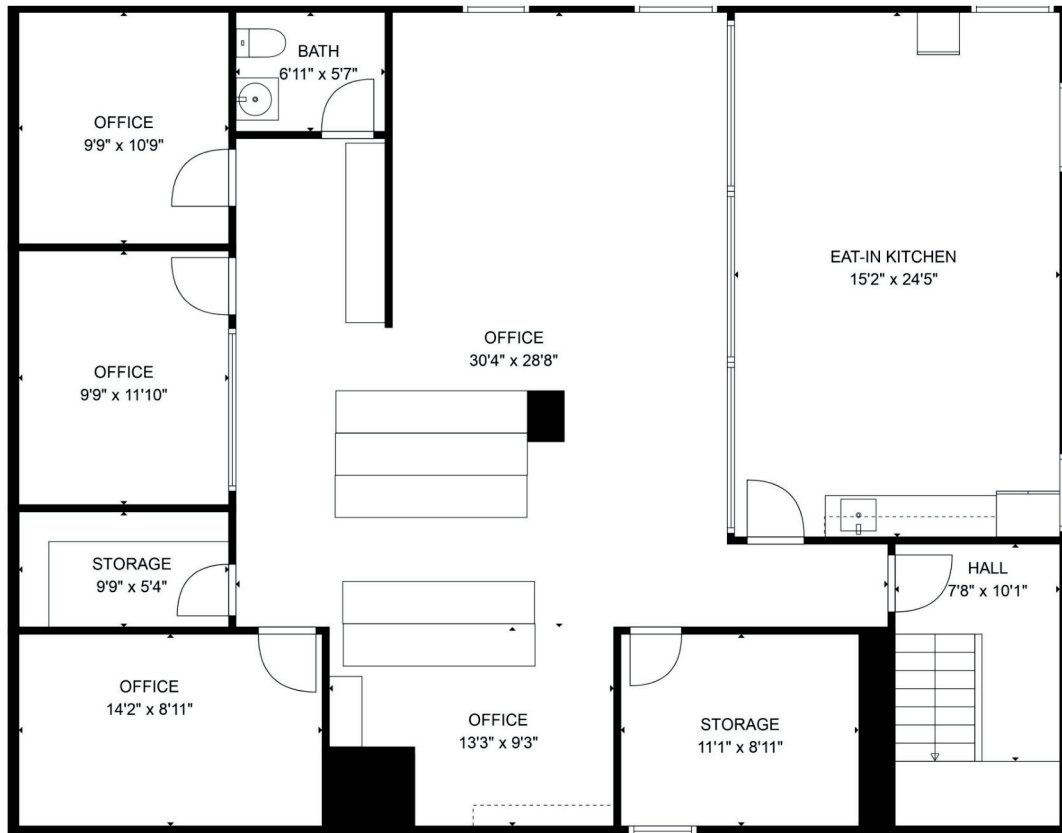
Jeffrey Clousing  
Executive Vice President  
(630) 518-9355 X6

[jeff@capitalrep.com](mailto:jeff@capitalrep.com)  
[www.capitalrep.com](http://www.capitalrep.com)



# 4900 MAIN STREET, DOWNERS GROVE, IL

## LOWER LEVEL



Property Site

Additional Parking



\*All boundary lines are approximate and for general informational purposes only.

# CAPITAL

REAL ESTATE PARTNERS

**FOR MORE INFORMATION,  
CONTACT:**

Jeffrey Clousing  
Executive Vice President  
(630) 518-9355 X6

[jeff@capitalrep.com](mailto:jeff@capitalrep.com)  
[www.capitalrep.com](http://www.capitalrep.com)

All information provided is from sources deemed reliable. No representation is made to the accuracy thereof and it is submitted subject to errors, omissions, changes, or withdrawal without notice.