



**Investment
Properties
Corporation**

F O R L E A S E

GULF COAST MEDICAL ARTS CENTER
1890 SW Health Parkway
NAPLES, FL. 34109



SUITE #	RENTABLE SQ. FT.	LEASE PRICE	EST. 2025 CAM
203 / 2-C	5,116 RSF	\$25 PSF NNN	\$10.22 PSF
301 / 3-A	4,156 RSF	\$30 PSF NNN	\$9.96 PSF

Medical office space located near NCH North Naples Hospital just off of Immokalee Road. Two medical office suites ready for occupancy.


Please call for details.

Clint L. Sherwood, CCIM | ext. 179 | clint@ipcnaples.com
John E. Cheffy | ext. 182 | john@ipcnaples.com

click here!



**Google
Maps**

CONTACT  (239) 261-3400

Investment Properties Corporation of Naples
3838 Tamiami Trail North Suite 402
Naples Florida 34103-3586
Tel: 239-261-3400 Fax: 249-261-7579 www.ipcnaples.com
Licensed Real Estate Broker

The statement and figures presented herein, while not guaranteed, are secured from sources we believe authoritative. Subject to prior sale, lease, withdrawal and price change without notice.

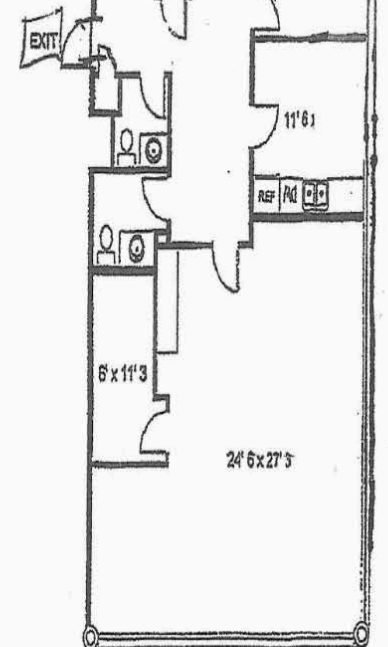
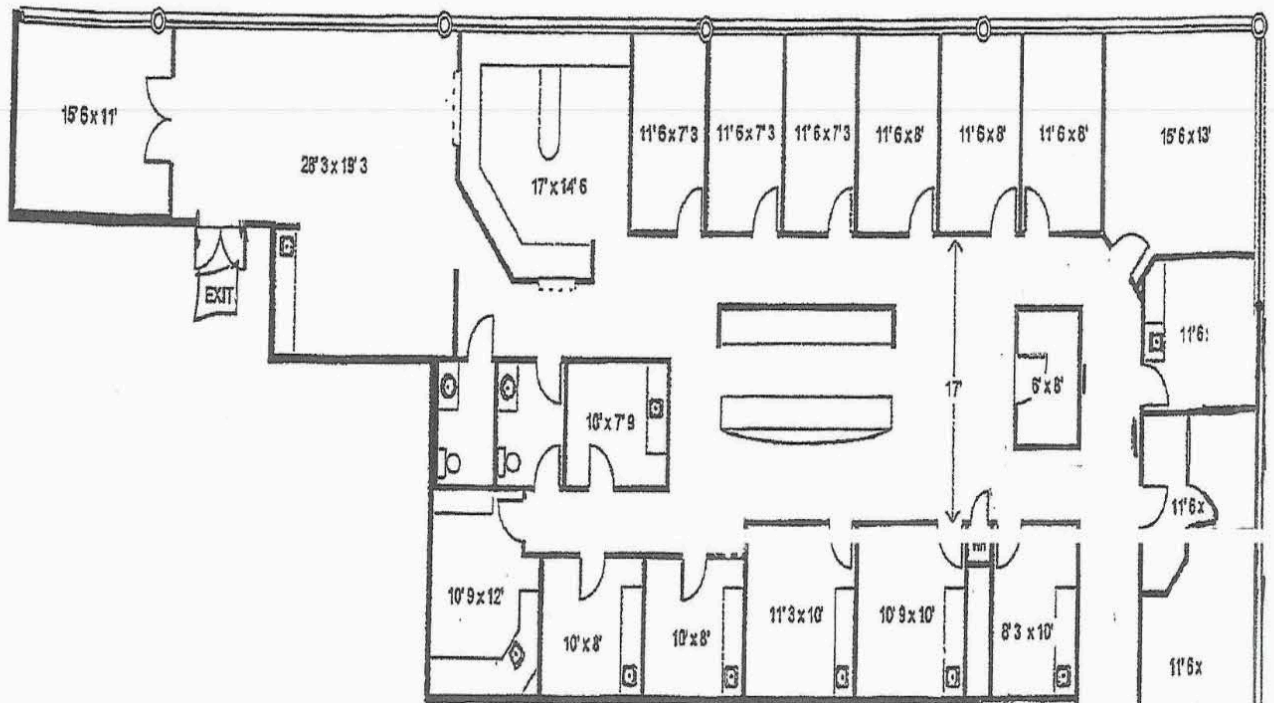


**Investment
Properties
Corporation**

PHOTOS / FLOOR PLAN

1890 SW HEALTH PARKWAY | NAPLES, FL

SUITE 203 / 2-C



Clint L. Sherwood, CCIM | ext. 179 | clint@ipcnaples.com
John E. Cheffy | ext. 182 | john@ipcnaples.com

CONTACT (239) 261-3400

Investment Properties Corporation of Naples
 3838 Tamiami Trail North Suite 402
 Naples Florida 34103-3586
 Tel: 239-261-3400 Fax: 249-261-7579 www.ipcnaples.com

Licensed Real Estate Broker

The statement and figures presented herein, while not guaranteed, are secured from sources we believe authoritative. Subject to prior sale, lease, withdrawal and price change without notice.

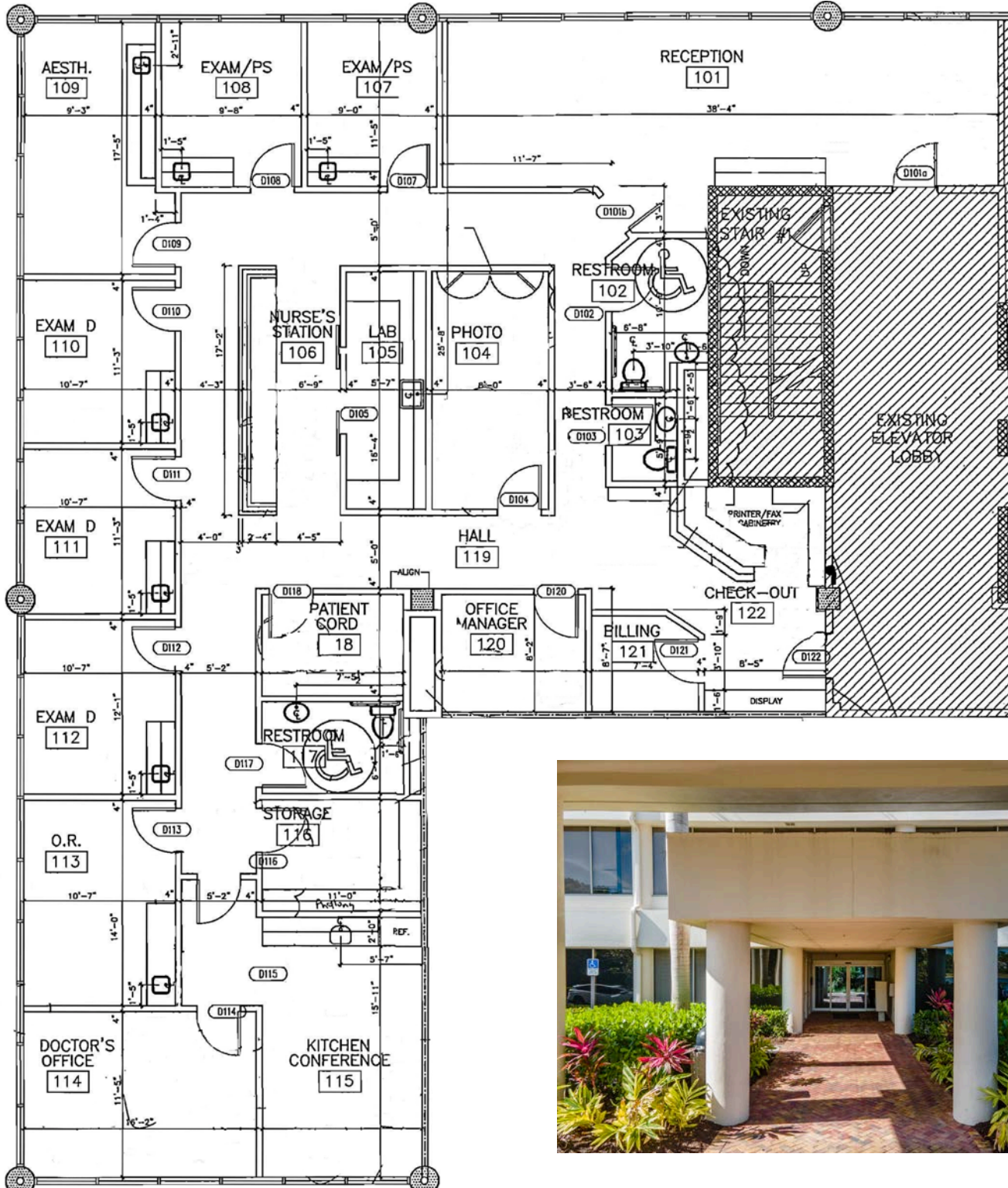


**Investment
Properties
Corporation**

FLOOR PLAN

1890 SW HEALTH PARKWAY | NAPLES, FL

SUITE 301 / 3-A



Clint L. Sherwood, CCIM | ext. 179 | clint@ipcnaples.com
John E. Cheffy | ext. 182 | john@ipcnaples.com

CONTACT (239) 261-3400

Investment Properties Corporation of Naples
 3838 Tamiami Trail North Suite 402
 Naples Florida 34103-3586

Tel: 239-261-3400 Fax: 249-261-7579 www.ipcnaples.com

Licensed Real Estate Broker

The statement and figures presented herein, while not guaranteed, are secured from sources we believe authoritative. Subject to prior sale, lease, withdrawal and price change without notice.



**Investment
Properties
Corporation**

PHOTOS

1890 SW HEALTH PARKWAY | NAPLES, FL

SUITE 301 / 3-A



**Clint L. Sherwood, CCIM | ext. 179 | clint@ipcnaples.com
John E. Cheffy | ext. 182 | john@ipcnaples.com**

CONTACT (239) 261-3400

3838 Tamiami Trail North Suite 402
Naples Florida 34103-3586

Tel: 239-261-3400 Fax: 249-261-7579 www.ipcnaples.com

Licensed Real Estate Broker

The statement and figures presented herein, while not guaranteed, are secured from sources we believe authoritative. Subject to prior sale, lease, withdrawal and price change without notice.

📍 Located near NCH North Naples Hospital & Landmark Hospital
1890 SW Health Parkway | Naples, Florida 34109

CONDOMINIUM BOOK _____ PAGE _____
SHEET 1 OF 4





Investment
Properties
Corporation

Gulfcoast Medical Arts Center

📍 Located near NCH North Naples Hospital & Landmark Hospital

1890 SW Health Parkway | Naples, Florida 34109

LOCATOR MAP



DEMOGRAPHICS (2025)	1 MILE	3 MILES	5 MILES
Est. Population	4,308	52,567	111,225
Est. Avg. Household Income	\$154,588	\$174,416	\$169,408