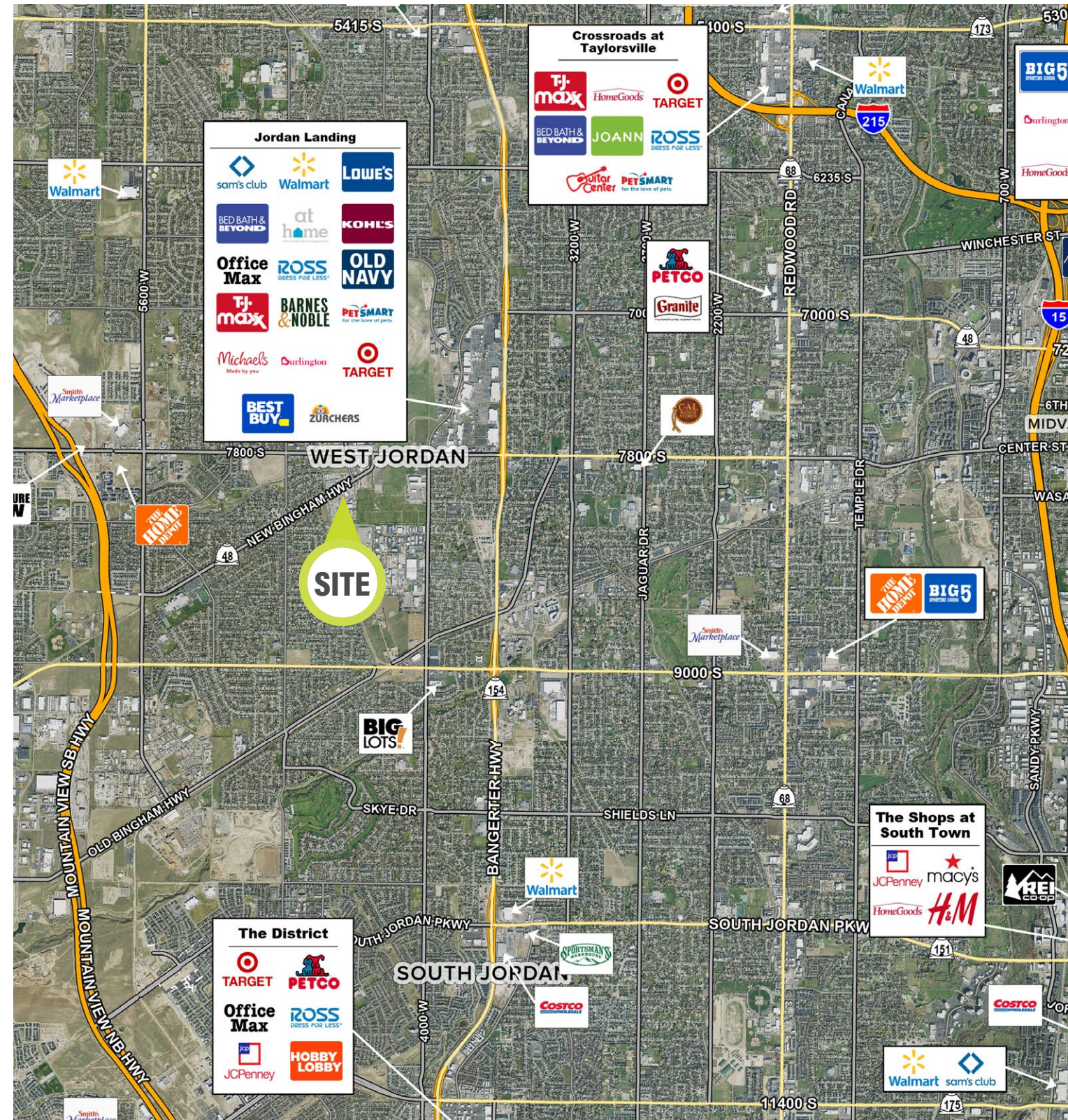


WELBY PARK INDUSTRIAL CONDO

8018 South Welby Park Drive, Unit 3 | West Jordan, UT 84088



Contact

SKYLER PETERSON, SIOR
Executive Vice President
m 801.656.7354
speterson@legendcommercial.com

TRE BOURDEAUX, SIOR
Vice President
m 801.824.0397
tbourdeaux@legendcommercial.com

PARKER TAGGART
Senior Associate
m 801.928.1815
ptaggart@legendcommercial.com

TANNER PULSIPHER
Associate
m 801.636.0255
tpulsipher@legendcommercial.com

LEGEND
PARTNERS
801.930.6750 | www.legendllp.com
2180 S 1300 E, Suite 240 | Salt Lake City, UT 84106

© Legend Partners, LLP. All rights reserved. All information contained herein is from sources deemed reliable; however, no representation or warranty is made to the accuracy thereof.

WELBY PARK INDUSTRIAL CONDO

8018 South Welby Park Drive, Unit 3 | West Jordan, UT 84088



FOR LEASE

\$1.15 PSF/Month NNN

Property Highlights

- Property size: 3,920 SF
- Office: 1,140 SF
- One (1) 12'x14' automatic grade level door
- Clear height: 20'
- Power: 225 amp 480 V 3-phase 4-wire
- Zoning: MP (Manufacturing Park Zone)
- Year built: 2021
- Radiant heater in warehouse
- One (1) restroom
- Two (2) drinking fountains
- Access: easy access off 7800 South exit of Bangerter Highway
- Location: located in the highly desirable submarket of West Jordan

Contact

SKYLER PETERSON, SIOR
Executive Vice President
m 801.656.7354
speterson@legendcommercial.com

TRE BOURDEAUX, SIOR
Vice President
m 801.824.0397
tbourdeaux@legendcommercial.com

PARKER TAGGART
Senior Associate
m 801.928.1815
ptaggart@legendcommercial.com

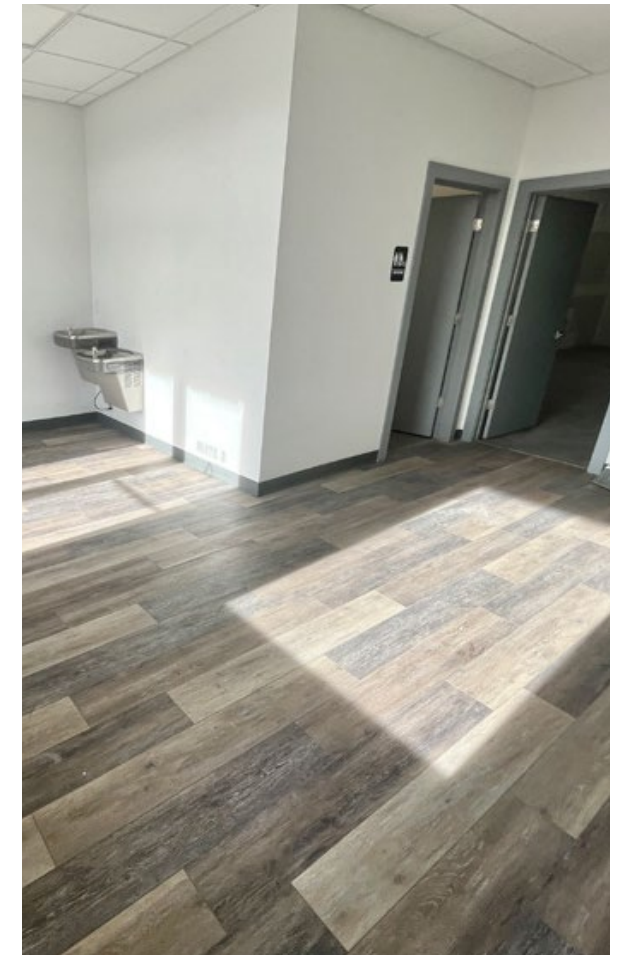
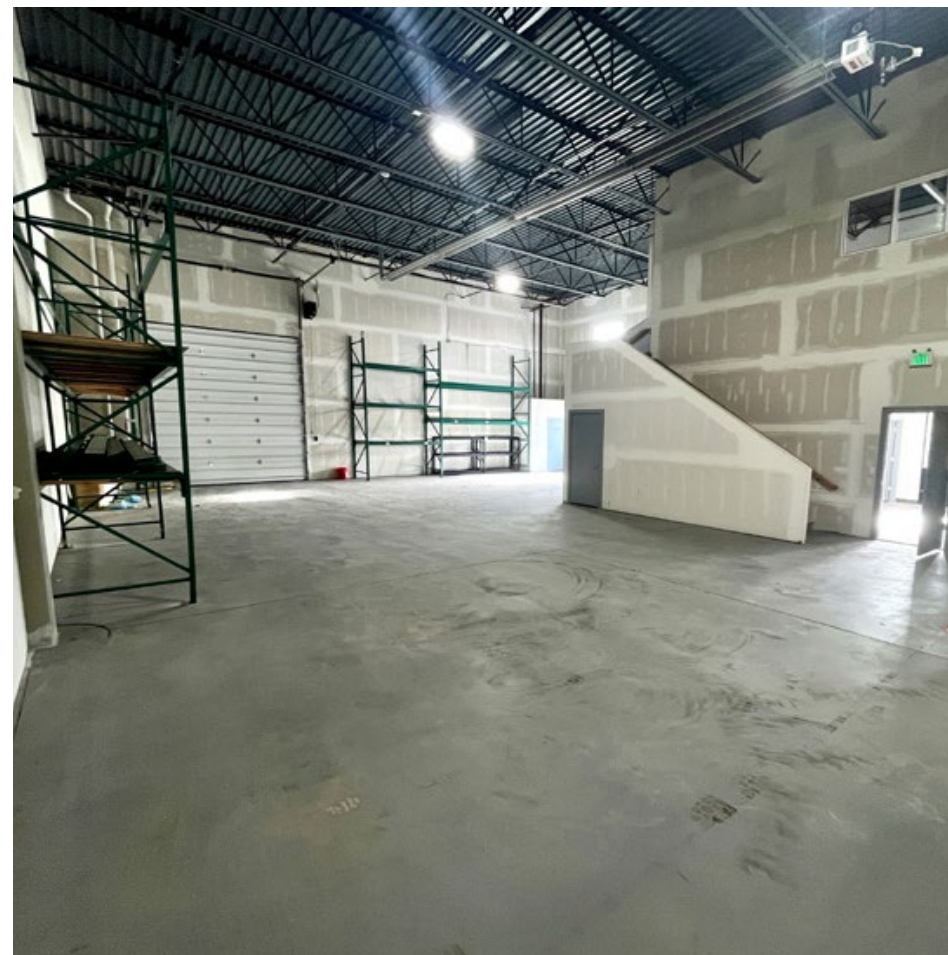
TANNER PULSIPHER
Associate
m 801.636.0255
tpulsipher@legendcommercial.com

LEGEND
PARTNERS
801.930.6750 | www.legendllp.com
2180 S 1300 E, Suite 240 | Salt Lake City, UT 84106

© Legend Partners, LLP. All rights reserved. All information contained herein is from sources deemed reliable; however, no representation or warranty is made to the accuracy thereof.

WELBY PARK INDUSTRIAL CONDO

8018 South Welby Park Drive, Unit 3 | West Jordan, UT 84088



Contact

SKYLER PETERSON, SIOR
Executive Vice President
m 801.656.7354
speterson@legendcommercial.com

TRE BOURDEAUX, SIOR
Vice President
m 801.824.0397
tbourdeaux@legendcommercial.com

PARKER TAGGART
Senior Associate
m 801.928.1815
ptaggart@legendcommercial.com

TANNER PULSIPHER
Associate
m 801.636.0255
tpulsipher@legendcommercial.com

LEGEND
PARTNERS ■■■■
801.930.6750 | www.legendllp.com
2180 S 1300 E, Suite 240 | Salt Lake City, UT 84106

© Legend Partners, LLP. All rights reserved. All information contained herein is from sources deemed reliable; however, no representation or warranty is made to the accuracy thereof.

Contact

SKYLER PETERSON, SIOR
Executive Vice President
m 801.656.7354
speterson@legendcommercial.com

TRE BOURDEAUX, SIOR
Vice President
m 801.824.0397
tbourdeaux@legendcommercial.com

PARKER TAGGART
Senior Associate
m 801.928.1815
ptaggart@legendcommercial.com

TANNER PULSIPHER
Associate
m 801.636.0255
tpulsipher@legendcommercial.com

LEGEND
PARTNERS ■■■■
801.930.6750 | www.legendllp.com
2180 S 1300 E, Suite 240 | Salt Lake City, UT 84106

© Legend Partners, LLP. All rights reserved. All information contained herein is from sources deemed reliable; however, no representation or warranty is made to the accuracy thereof.