



Suite B Main Entry

OFFICE SPACE FOR LEASE

100 Village Street, Hoover, AL 35242

Office Space For Lease in prime location along Hugh Daniel Drive within Greystone Commercial Park

PROPERTY HIGHLIGHTS

- Perfect for a general contractor or a real estate office
- Come Join Key Tenant Lument - a leading nation-wide provider of multifamily debt and equity
- Floor to ceiling glass windows with abundant natural light
- Drive-thru canopy entryway



ASKING RATE:

Call For Pricing



AVAILABILITY:

±5,500 SF Class A, free-standing, single-story, garden office



LOCATION:

Easy access to HWY 280 via Hugh Daniel Drive



PARKING RATIO:

Ample surface parking available and 4-car garage connected to office space



Suite B Rear – 4-Car Garage



NORMAN TYNES

ntyne@harbertrealty.com | 205.458.8105

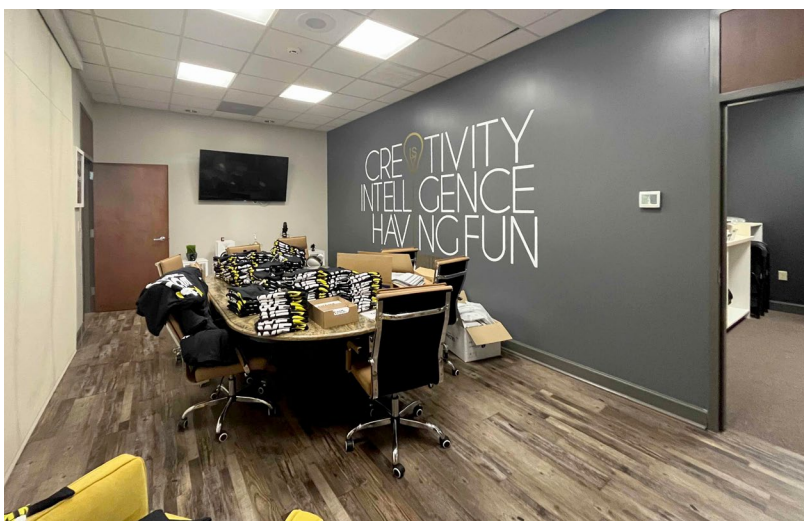
For More Information: HarbertRealty.com
2 North 20th Street, #1700, Birmingham, AL 35203

The information contained herein has been obtained from sources deemed reliable, however, HRS makes no guarantees, warranties or representation as to its completeness or accuracy thereof. The presentation of this property is submitted subject to errors, omissions, change of price or conditions, prior to sale or lease or withdrawal without notice.

OFFICE SPACE FOR LEASE

100 Village Street, Hoover, AL 35242

Office Space For Lease in prime location along Hugh Daniel Drive within Greystone Commercial Park



HARBERT
REALTY SERVICES

NORMAN TYNES

ntynes@harbertrealty.com | 205.458.8105

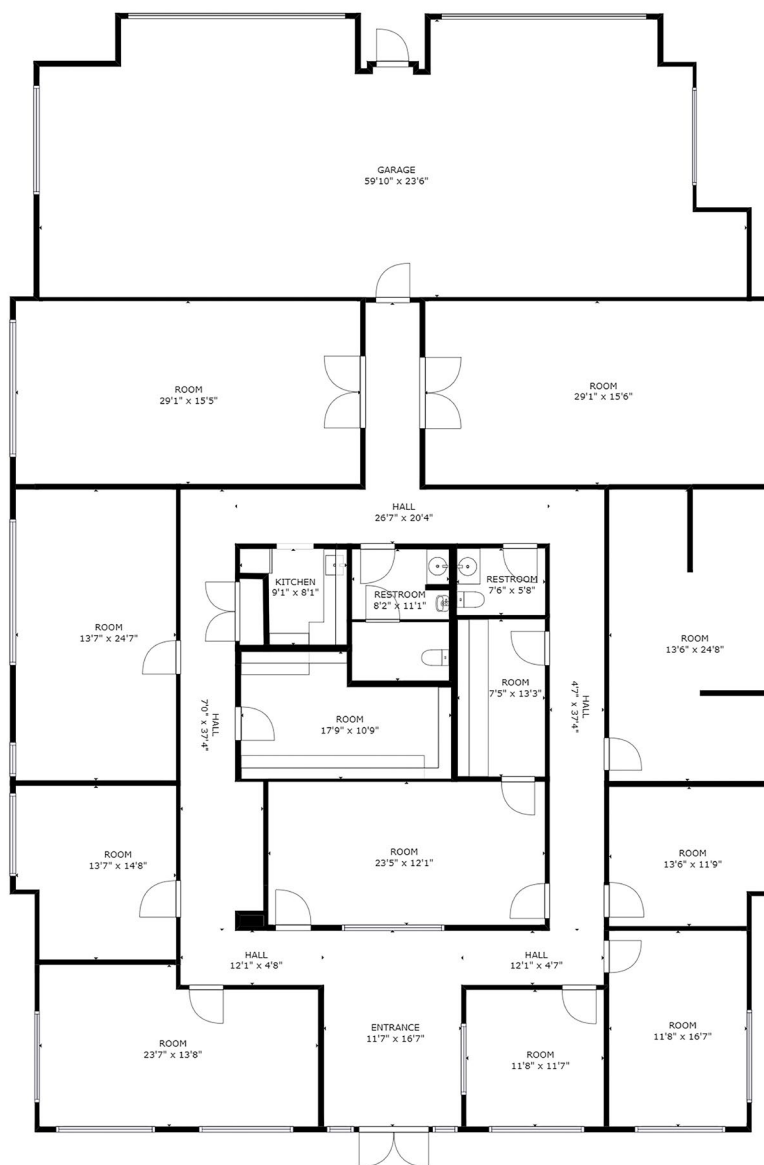
For More Information: HarbertRealty.com

2 North 20th Street, #1700, Birmingham, AL 35203

OFFICE SPACE FOR LEASE

100 Village Street, Hoover, AL 35242

Office Space For Lease in prime location along Hugh Daniel Drive within Greystone Commercial Park



**±5,500 SF
AVAILABLE**



HARBERT
REALTY SERVICES

NORMAN TYNES

ntynes@harbertrealty.com | 205.458.8105

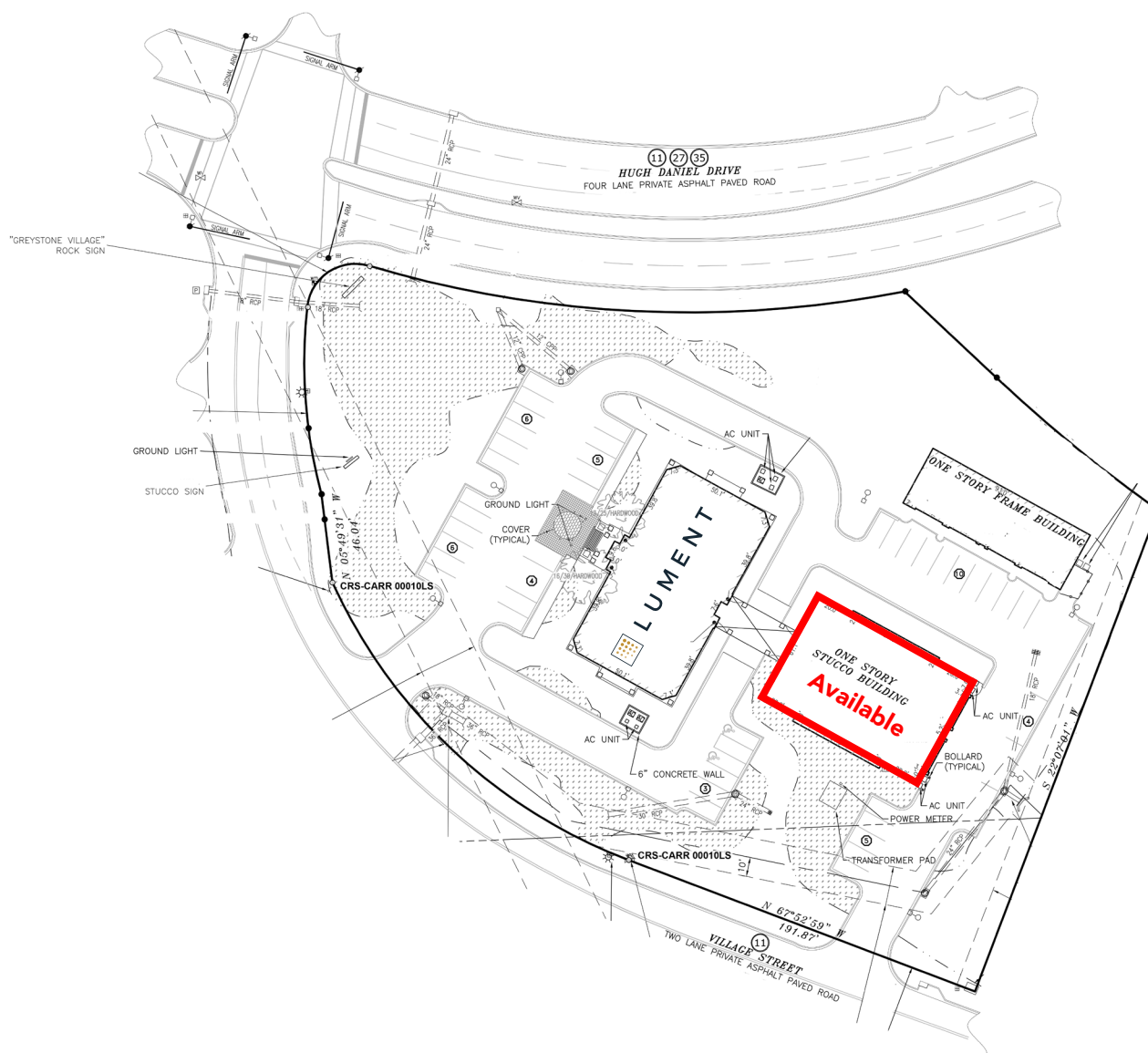
For More Information: HarbertRealty.com

2 North 20th Street, #1700, Birmingham, AL 35203

OFFICE SPACE FOR LEASE

100 Village Street, Hoover, AL 35242

Office Space For Lease in prime location along Hugh Daniel Drive within Greystone Commercial Park



HARBERT
REALTY SERVICES

NORMAN TYNES

ntynes@harbertrealty.com | 205.458.8105

For More Information: HarbertRealty.com

2 North 20th Street, #1700, Birmingham, AL 35203

OFFICE SPACE FOR LEASE

100 Village Street, Hoover, AL 35242

Office Space For Lease in prime location along Hugh Daniel Drive within Greystone Commercial Park



GREYSTONE - HOOVER, AL

Nestled in the foothills of the Appalachian Mountains, Greystone is a community located in Hoover, Alabama, just southeast of Birmingham. Greystone's beautiful natural surroundings are the setting for 1,400 homes. Established in 1990, the Founders side of the neighborhood is made up of over 850 homes. Development on the Legacy side of the neighborhood began in 1999 and is home to over 550 families. Homes in Greystone range from \$350,000 to \$5,000,000.

As part of the city of Hoover, Greystone boasts an excellent school system including Greystone Elementary School, Berry Middle School and Spain Park High School. School buses pick up and return your children from a variety of stops in the neighborhood. There are also several private schools in the area including Briarwood Christian School, Hilltop Montessori School, Oak Mountain Classical School, and Goddard School for Early Childhood Development.

Greystone Golf & Country Club is the cornerstone of the community and is **located less than 5 minutes from the office building**. The Club offers 2 world-class championship golf courses, Founders and Legacy. Venture outside the gates and enjoy over 20 restaurants within a mile of Greystone. There are several shopping and entertainment venues suitable for every member of the family just outside the gates.



1,400 HOMES



2 WORLD CLASS
CHAMPIONSHIP
GOLF COURSES

\$\$\$

HOME VALUE OF
\$350,000 - \$5,000,000



NORMAN TYNES
ntynes@harbertrealty.com | 205.458.8105

For More Information: HarbertRealty.com
2 North 20th Street, #1700, Birmingham, AL 35203