



FOR LEASE

PROPERTY HIGHLIGHTS:

- Building Size: 30,406 SF
- Available For Lease: 1,307 RSF of medical office space
- Located just north of downtown Rochester, near the intersection of Orion Road and N Rochester Road
- Ample parking with covered patient drop-off
- Busy, suburban area near schools and restaurants
- Less than 15 miles from several major hospitals, including Ascension Providence Rochester Hospital, Pontiac General Hospital, Henry Ford Macomb Hospital, and Corewell Health Beaumont Troy Hospital
- Recently completed building improvements, including new elevators, new entrance awning, and new common area paint

BEAUMONT MEDICAL CENTER
6700 N ROCHESTER RD.
ROCHESTER HILLS, MI 48306

CONTACT:

Stephanie Decker
VP, Property Management
248.630.3246
SDecker@cciin.com

CORNERSTONE COMPANIES

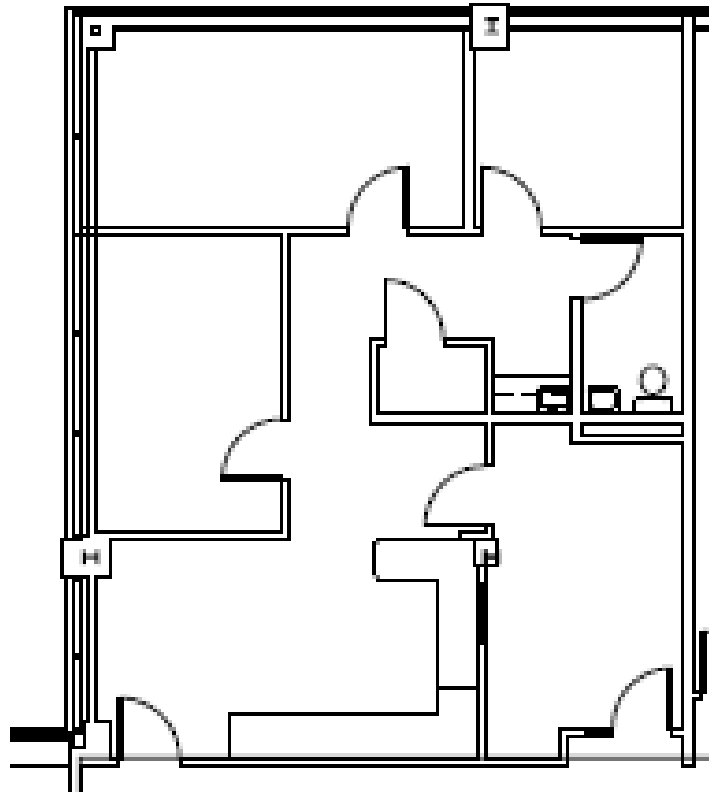
220 S Main St.
Royal Oak, MI 48067



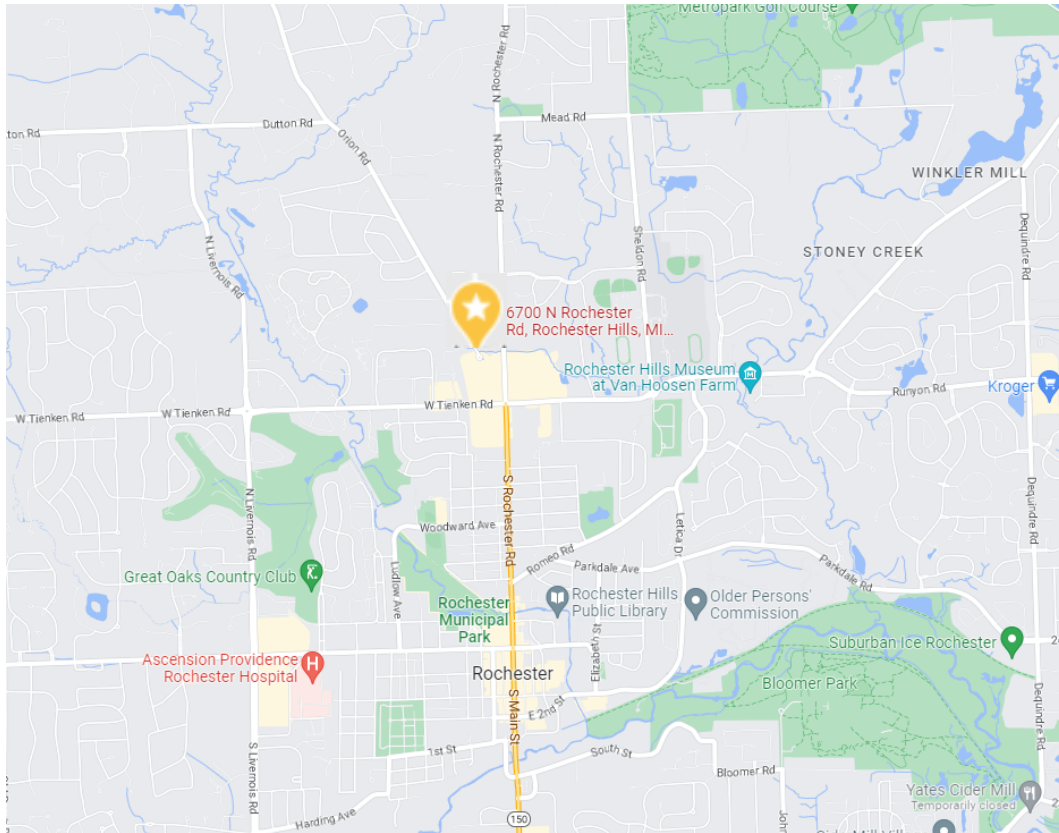
FLOOR PLAN

2ND FLOOR

SUITE 202
1,307 RSF



LOCATION



KEY FACTS (5 Mile Radius)

144,051

Population

42.1

Median Age



56,197
Households

\$83,977

Median Disposable
Income

INCOME



\$103,705

Median
Household Income



\$56,958

Per Capita
Income



\$403,599

Median Net
Worth