



SOUTH PARK GROUP

www.southparkgroup.com



FOR LEASE

RESTAURANT

1155 North Highland Avenue
Los Angeles, California 90038

Prime restaurant space in close proximity to post production and pre-production studios. Type 47 Liquor License available to purchase. Street parking only.

AVAILABLE SPACE

Size: Approx. 3,200 rentable sqft
Rate: \$4.75 per sqft, NNN (\$0.50)

JACK RAVAN

Tel. 323.782.1270

E. jackravan@southparkgroup.com

No. 00890189

ETHAN WEBSTER

Tel. 323.782.1260

E. ethan@southparkgroup.com

No. 02225823

SOUTH PARK GROUP | 8322 Beverly Blvd., Suite 301 | Los Angeles, CA 90048

This information has been furnished by sources that we deem reliable, but for which we assume no liability. The information contained herein is given, in confidence, with the understanding that all negotiations pertaining to this property be handled through the submitting office. All measurements are approximate.

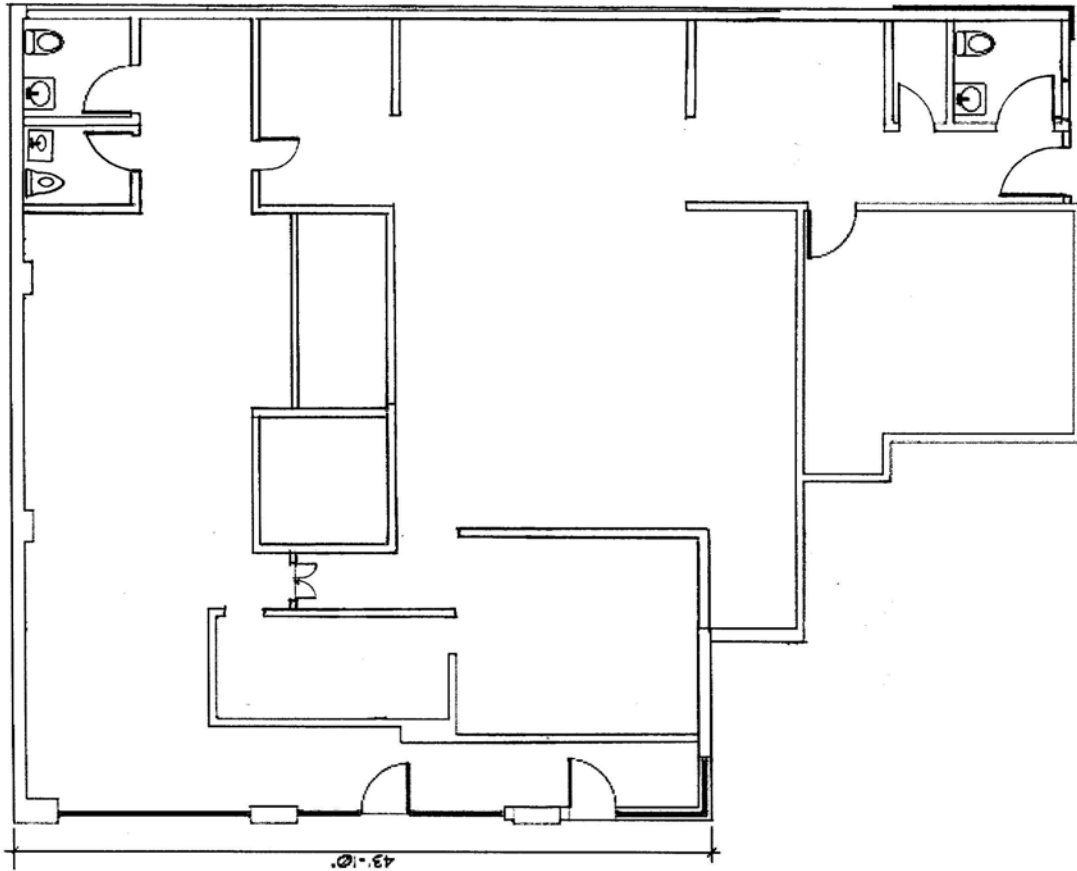


SOUTH PARK GROUP

www.southparkgroup.com

FLOOR PLAN

1155 N. Highland Avenue, Los Angeles, California 90038



LEXINGTON AVENUE

HIGHLAND AVENUE

SOUTH PARK GROUP | 8322 Beverly Blvd., Suite 301 | Los Angeles, CA 90048

This information has been furnished by sources that we deem reliable, but for which we assume no liability. The information contained herein is given, in confidence, with the understanding that all negotiations pertaining to this property be handled through the submitting office. All measurements are approximate.



SOUTH PARK GROUP

www.southparkgroup.com

INTERIOR

1155 N. Highland Avenue, Los Angeles, California 90038



SOUTH PARK GROUP | 8322 Beverly Blvd., Suite 301 | Los Angeles, CA 90048

This information has been furnished by sources that we deem reliable, but for which we assume no liability. The information contained herein is given, in confidence, with the understanding that all negotiations pertaining to this property be handled through the submitting office. All measurements are approximate.