

350 Houbolt Road Joliet, Illinois

20,00 SF
General
Office Space
Available



Christine Simek
630.473.5070

christine@xroadsadvisors.com

Become a part of the vibrant Joliet business community at the 350 Houbolt Office Building! With more than 20,000 square feet of contemporary office space in a prime location, we have the perfect environment to support your business and foster its growth.

Building Features

- Suites Available:
 - Suite 205: 431 RSF
 - 431 RSF located off main entrance lobby featuring 1 private suite and waiting area.
 - Suite 209: 2,646 SF
 - Excellent visibility off the main marble entrance with large receptionists' area, 5 - 6 private offices, conference room and storage. Ideal for law practice, financial services, sales office.
- Masonry construction and beautiful marble lobby
- ADA Lift Access
- Public transportation available in front of the building
- Monument signage opportunity available
- Located near a variety of restaurants, shopping areas, as well as Joliet Community College
- Convenient ramp access to I-55 and I-80

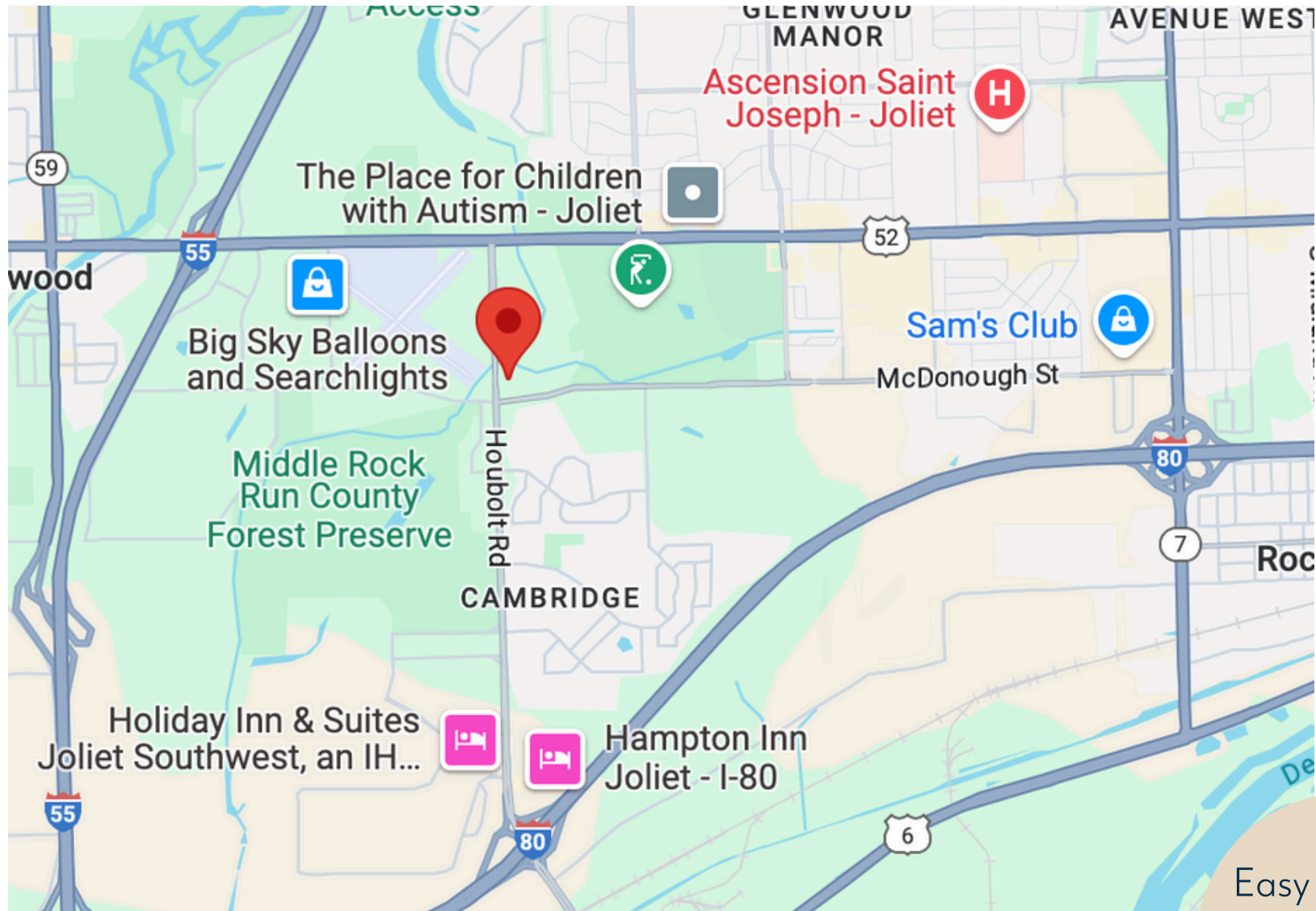
Exterior Photos



Interior Photos

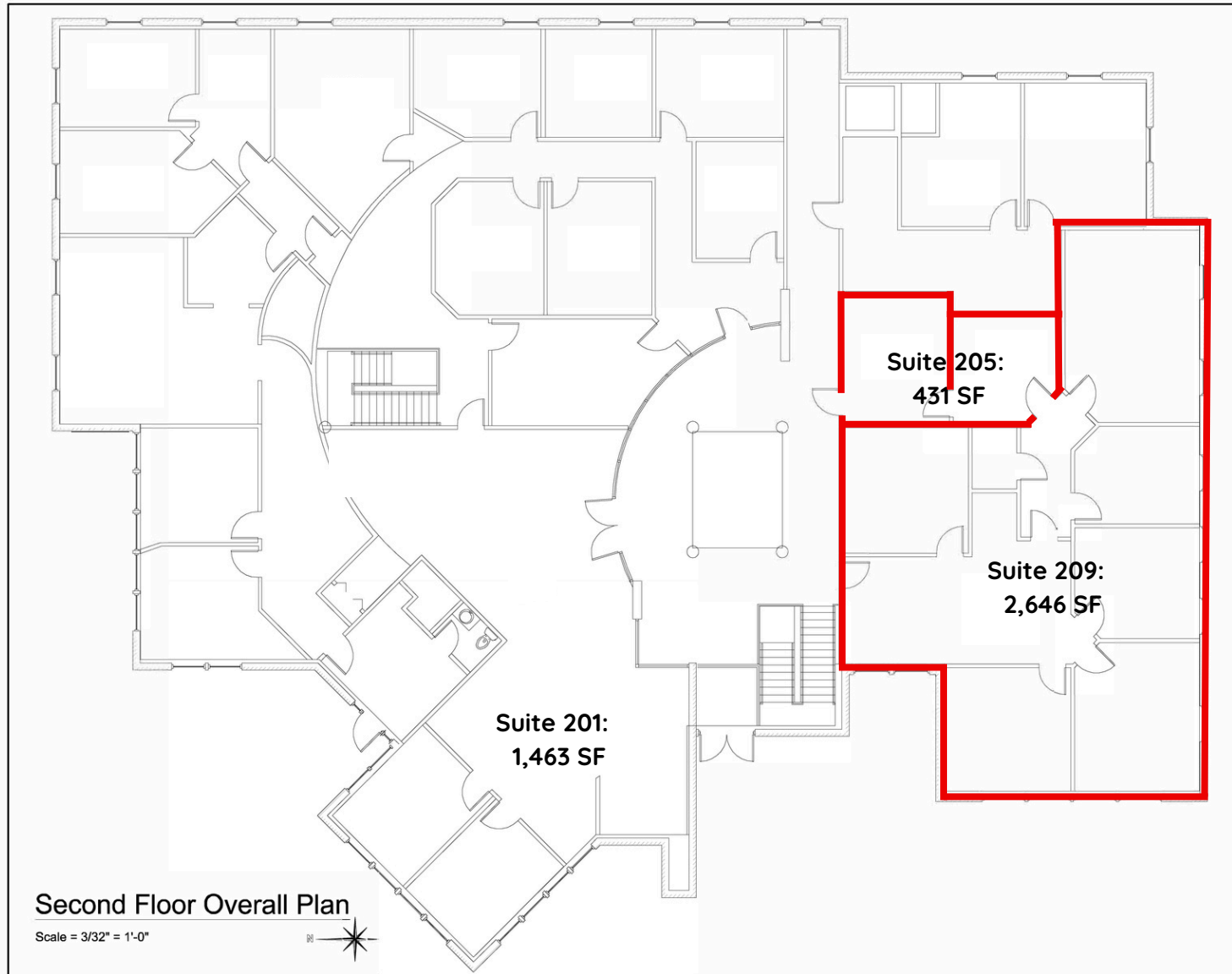


Location



Easy access to
I-55 and
I-80

Floor Plan: 2nd Floor



350 Houbolt Road
Joliet, Illinois



Christine Simek
630.473.5070

christine@xroadsadvisors.com