

FOR SALE / LEASE

3231 SUPERIOR LN STE A1 BOWIE, MD 20715



Belair Professional
Village

Judith Neighoff

410.260.6545

jneighoff@hyattcommercial.com

PROPERTY DESCRIPTION

First floor medical/office condo located on corner and well lit with natural light. Unit A1 contains 1099 +/- sf and has 5 offices, kitchen, bathroom, reception area. Easy access parking

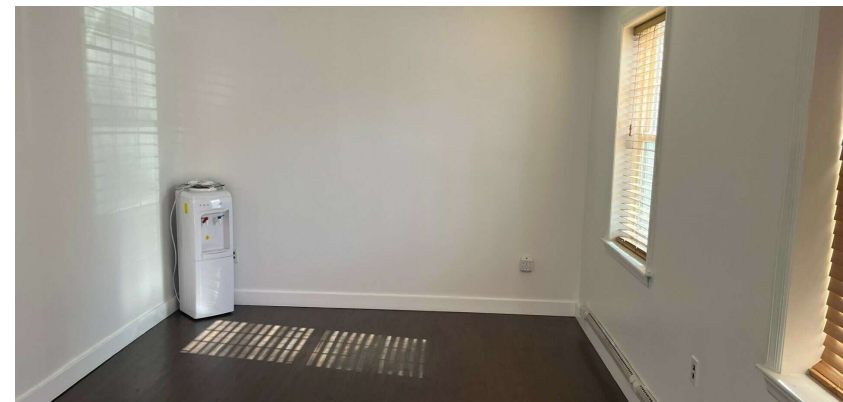
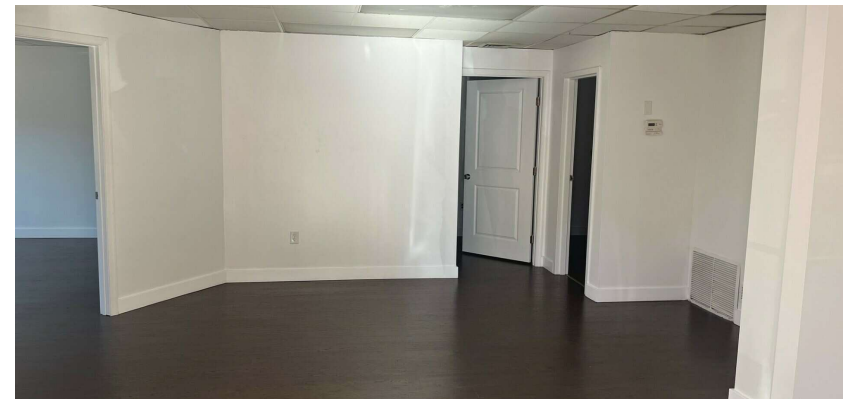
OFFERING



FOR SALE / LEASE

OFFICE SPACE

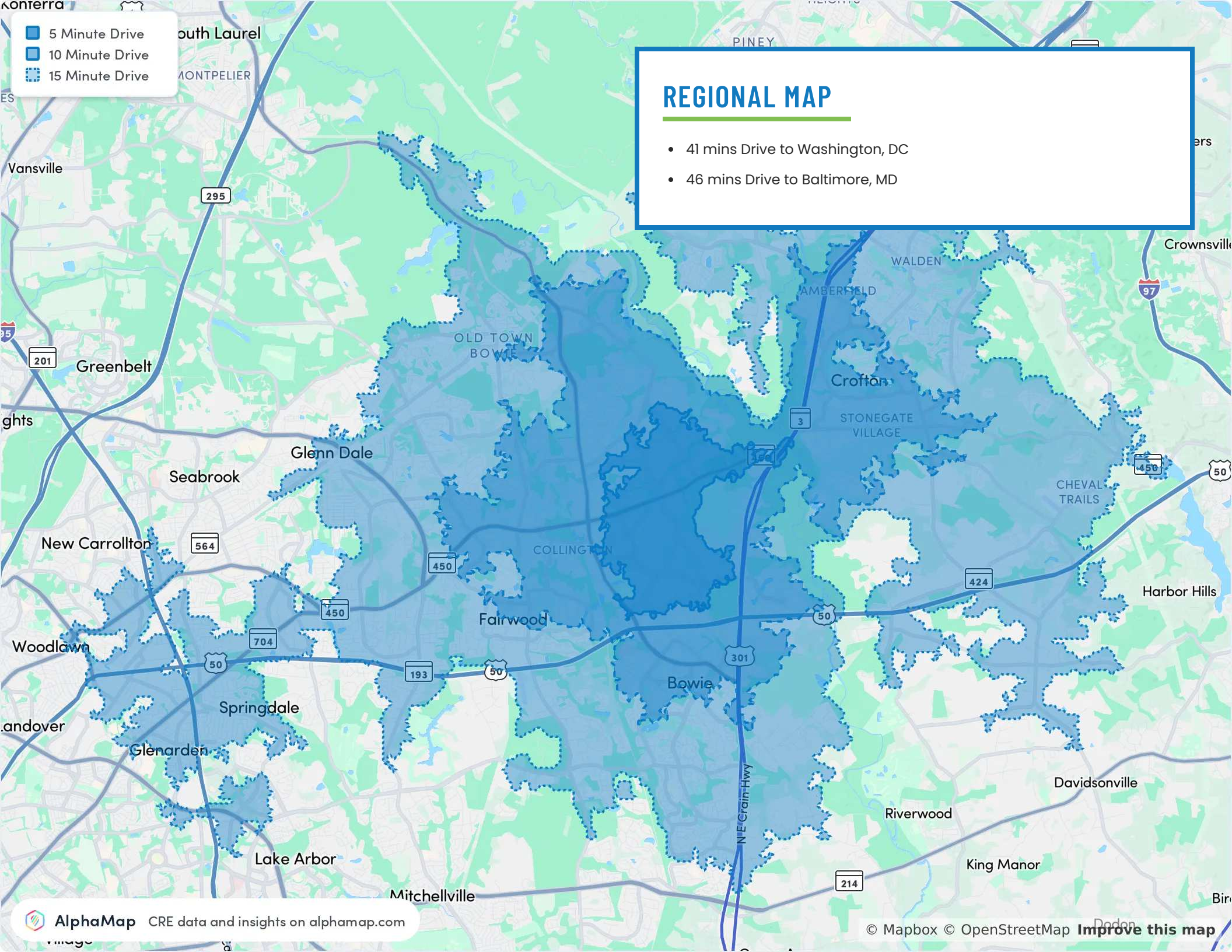
Property Type	Office
Price	N/A / \$23.00 SF/yr (NNN)
Unit A1	1,099 SF



- 5 Minute Drive
- 10 Minute Drive
- 15 Minute Drive

REGIONAL MAP

- 41 mins Drive to Washington, DC
- 46 mins Drive to Baltimore, MD



DEMOGRAPHICS



2023 SUMMARY

	1 MILE	3 MILES	5 MILES
Population	8,083	52,303	120,222
Households	2,970	18,769	41,668
Average Household Size	2.7	2.8	2.9
Average Age	43	42	41
Average Household Income	\$153,989	\$181,193	\$193,548



120,222
Population



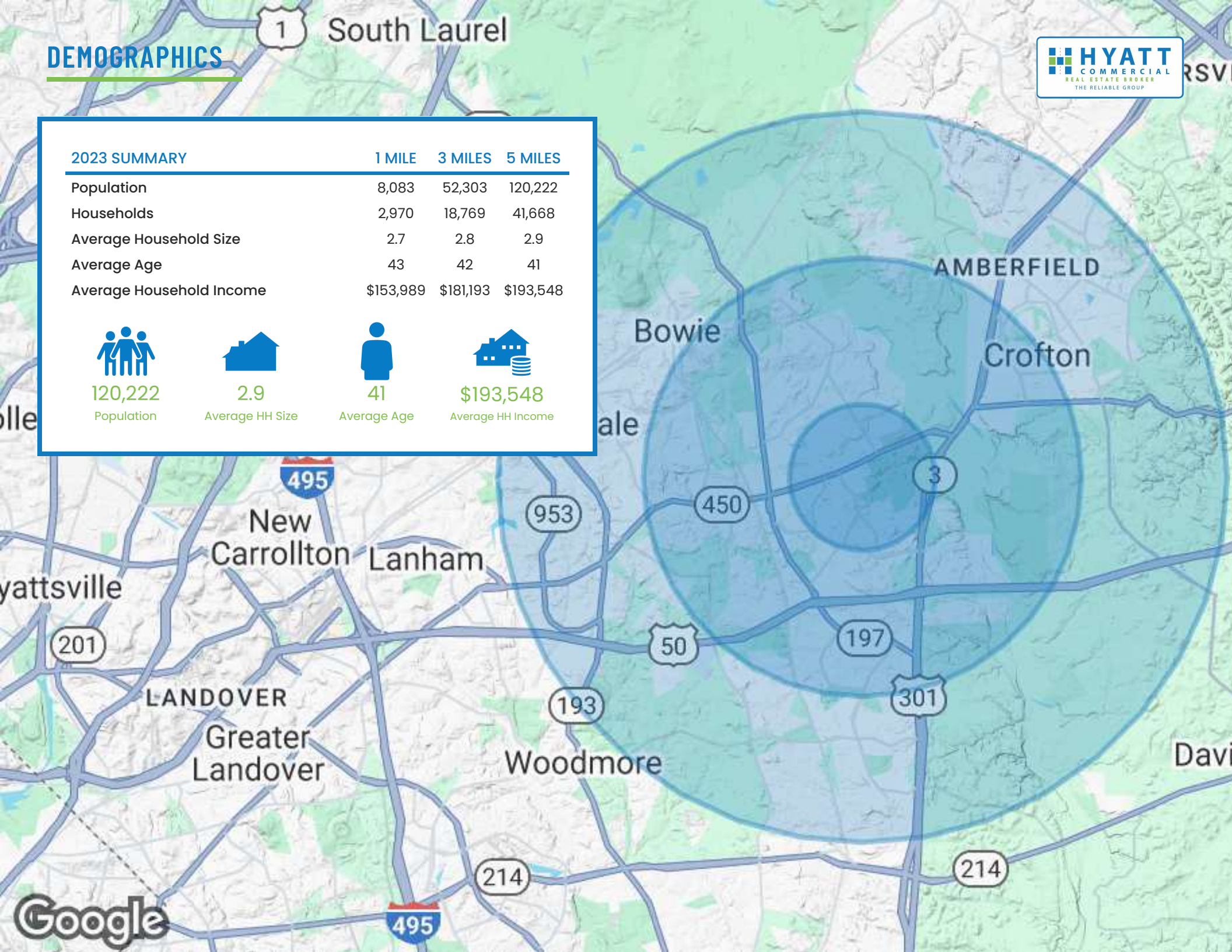
2.9
Average HH Size



41
Average Age



\$193,548
Average HH Income





CONTACT

HYATT COMMERCIAL
410.266.8800
2568A Riva Rd, Suite 300, Annapolis, MD 21401

Judith Neighoff
410.260.6545
jneighoff@hyattcommercial.com

While we have no reason to doubt the accuracy of any of the information supplied, we cannot, and do not, guarantee its accuracy. All information should be independently verified prior to a purchase or lease of the property. We are not responsible for errors, omissions, misuse, or misinterpretation contained herein and make no warranty of any kind, express or implied, with respect to the property or any other matters. The property is subject to price change or withdrawal without notice.