

FOR SUBLEASE

OFFICE | 1760 SOUTH TELEGRAPH ROAD



1760 SOUTH TELEGRAPH ROAD, SUITE 240

BLOOMFIELD HILLS, MI 48302

PROPERTY HIGHLIGHTS:

- Beautiful lake views from private offices.
- 8 private offices
- Newly Remodeled Modern Building Common Areas
- Join Other Tenants - Hertz Schram law firm and Oakland County Bar Association
- Excellent Access to I-75 and Southfield via Telegraph Road
- Strong management and Ownership

SUBLEASE EXPIRATION: 9/30/2027

SPACE	LEASE RATE	SIZE (SF)
Suite 240	\$22.00 SF/yr	2,375 SF



FOR MORE INFORMATION PLEASE CONTACT:



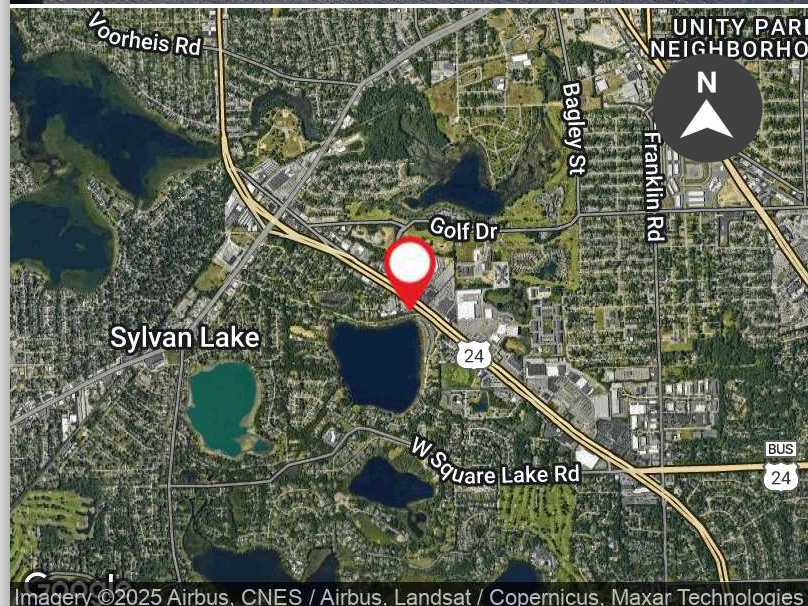
STEVE EISENSHTADT

Senior Vice President, Brokerage Services
steve.eisenshtadt@freg.com

248.324.2000

eCODE 149

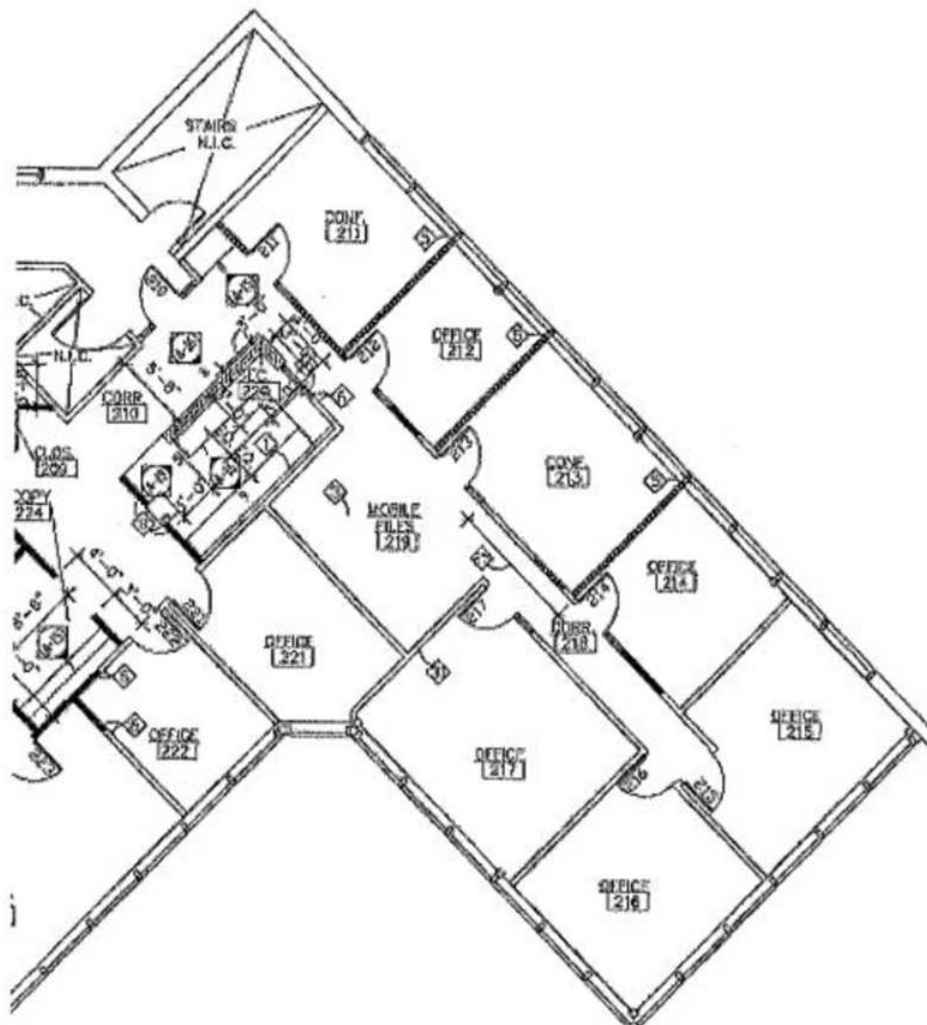
The information provided herein along with any attachment(s) was obtained from sources believed to be reliable, however, Friedman Real Estate makes no guarantees, warranties, or representations as to the completeness or accuracy of such information and legal counsel is advised. All information provided is subject to verification and no liability for reliance on such information or errors or omissions is assumed. The presentation of this property is submitted subject to errors, omissions, change of price or conditions, prior sale or lease, or withdrawal without notice. Copyright © 2025 Friedman Real Estate. All rights reserved.



OFFICE SUBLEASE | 1760 SOUTH TELEGRAPH ROAD | SUITE 240
FLOOR PLAN

SUITE 240 CURRENT FLOOR PLAN

Rentable Square Feet: 2,375 sf



OFFICE SUBLEASE | 1760 SOUTH TELEGRAPH ROAD | SUITE 240
PHOTOS

