

LAND FOR LEASE



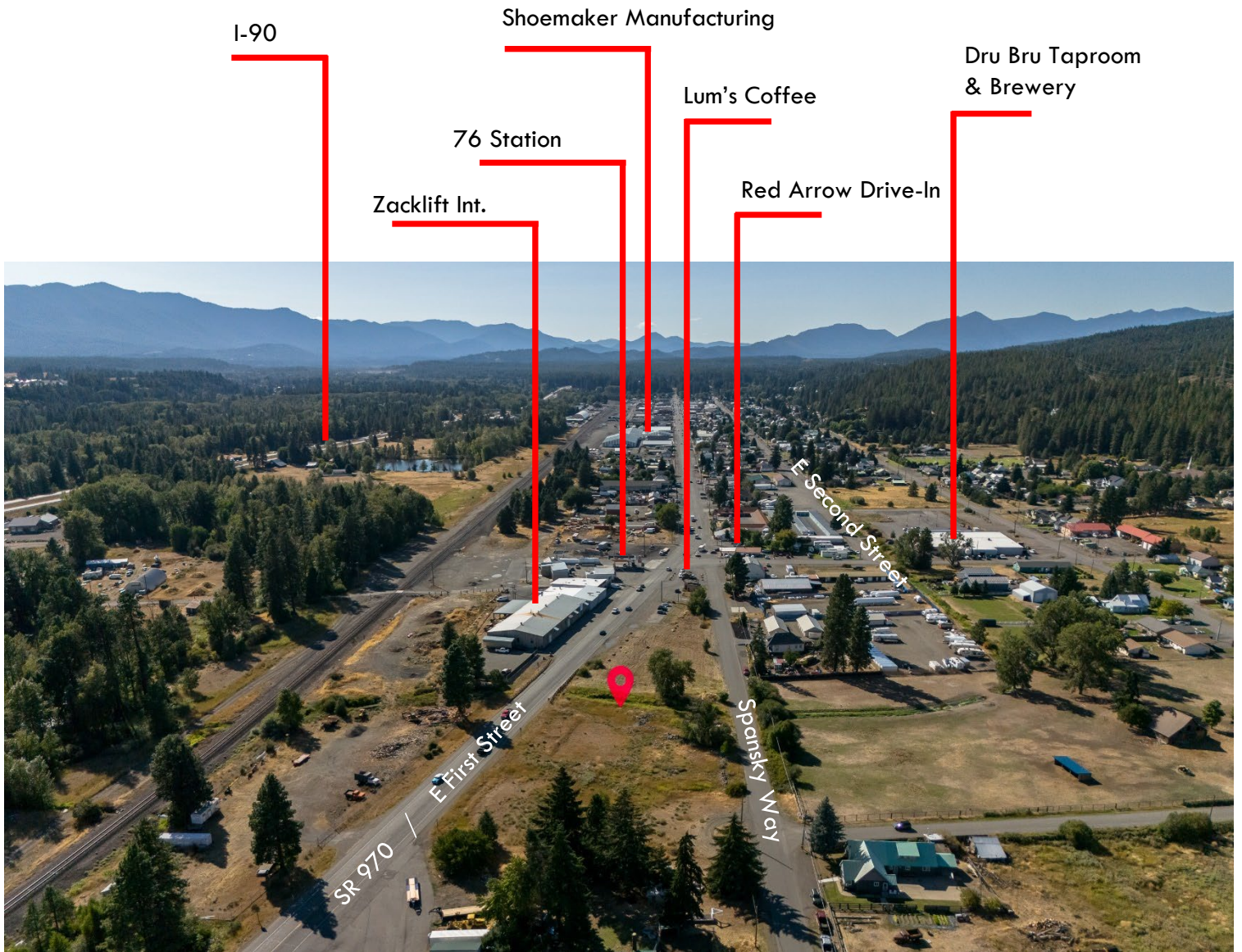
XXX SR 903
Cle Elum, WA 98922

Terms: Negotiable, NNN
Zoning: General Commercial
87,216 sq. ft.



Sammy Clifton, Broker
SJC.HOMES@OUTLOOK.COM
425-281-6469

GREAT *WV*
REAL ESTATE, LLC



Property Highlights:

Prime location! 2 Full acres of vacant land available for Lease on First Street. Surrounded by established businesses, this busy location is ready for your new commercial venture!

Zoning: General Commercial

Terms: Negotiable, NNN, Lease Purchase option

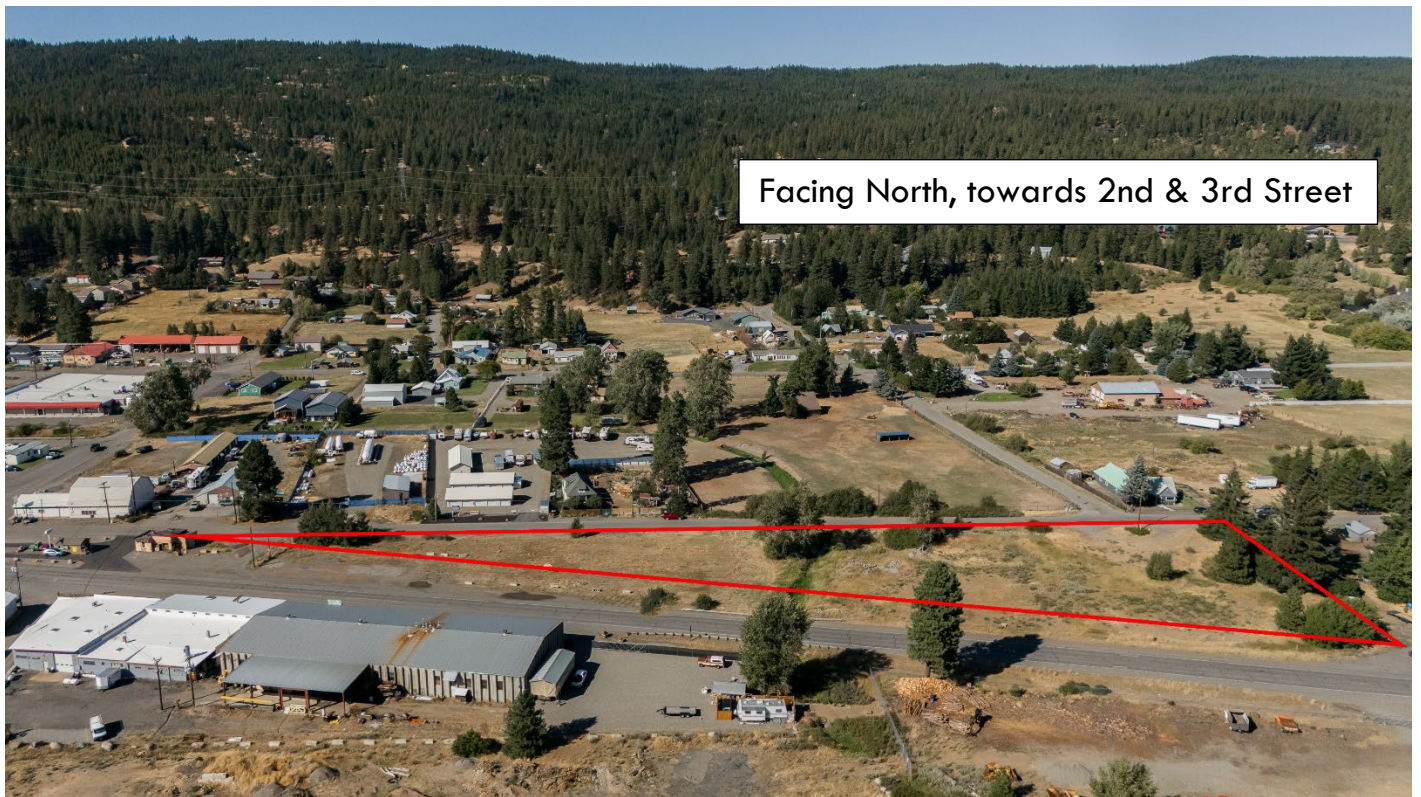
2 Acres, level lots

Utilities in street, Water line in E 1st Street and sewer at the intersection of Short Ave/E First St.

Additional photos:



Facing South, towards I-90



Facing North, towards 2nd & 3rd Street