

FORMER WRENN HOUSE RESTAURANT

115 S. JACKSON ST. | SALISBURY, NORTH CAROLINA 28144



CONTACT FOR DETAILS

JOHN HADLEY

(704) 373-9797

JHadley@TheNicholsCompany.com

Restaurant for Lease

+/- 6,100 SF RESTAURANT WITH PATIO

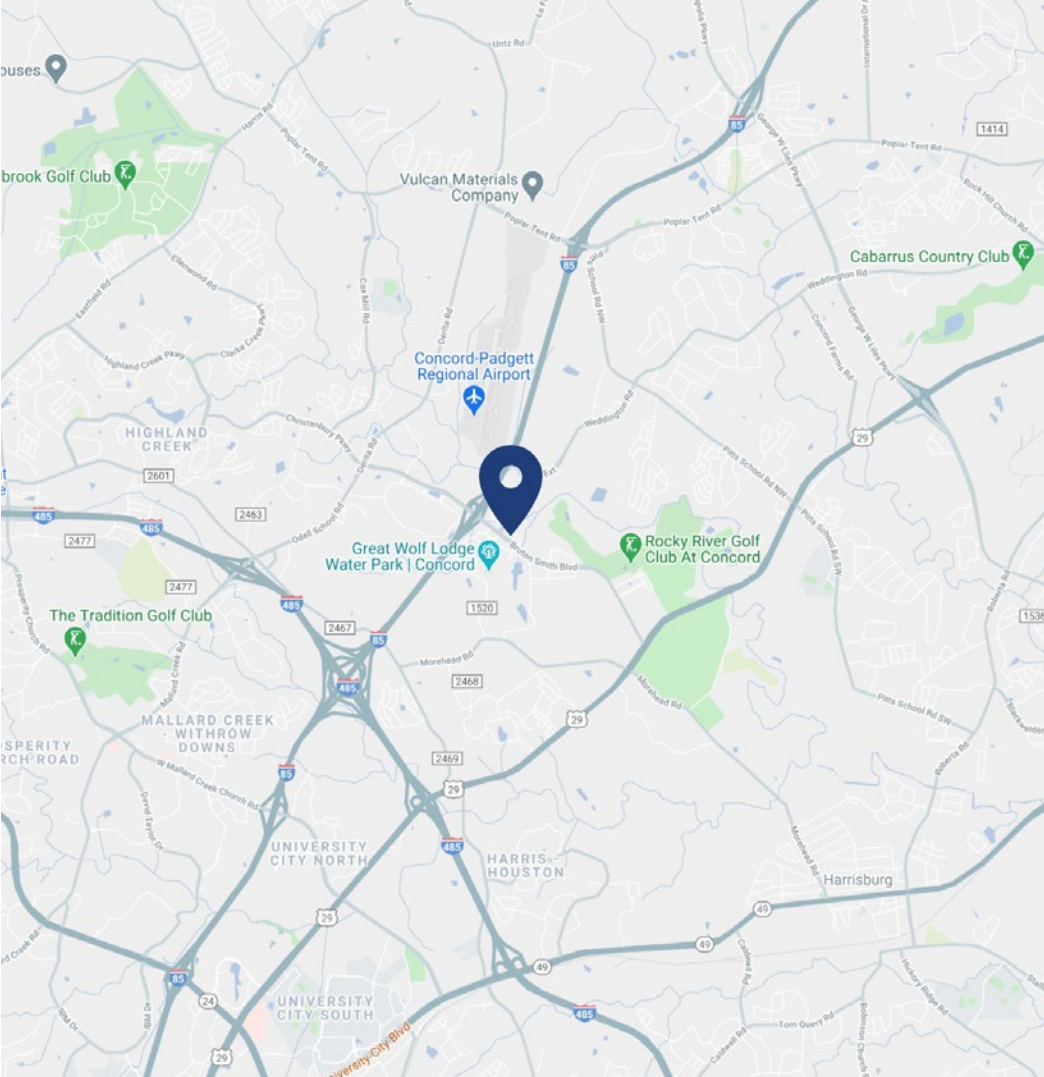
PROPERTY OVERVIEW

FORMER WRENN HOUSE

The former Wrenn House Restaurant is being redeveloped as part of Bell Tower Green Park, downtown Salisbury's much anticipated green space. Surrounded by well-maintained gardens, a water wall, pavilion, creative play space, stage structure and historical bell tower, this is a unique opportunity to lease restaurnt space in a busy section of Salisbury.

PROPERTY DETAILS

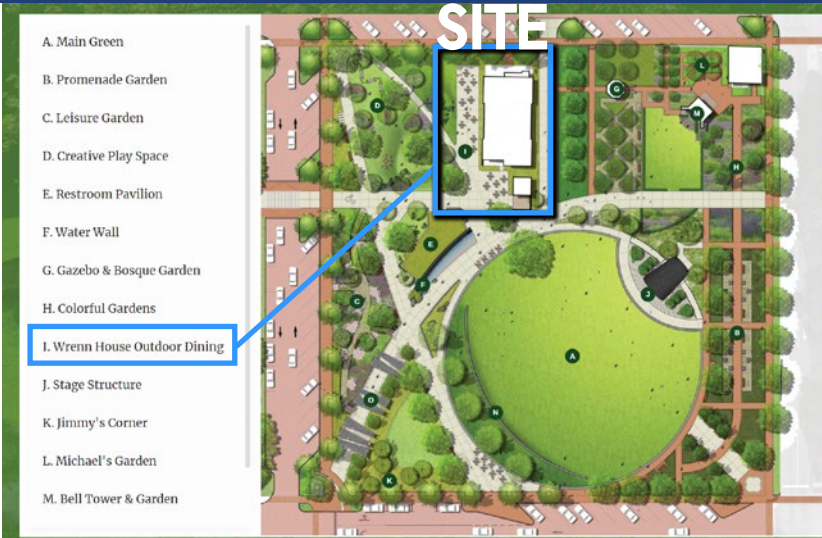
Address	115 S. Jackson St. Salisbury, NC 28144
Availability	+/- 6,100 SF Restaurant Available for Lease Beautiful patio opportunity Landlord can deliver a plug-and-play type of restaurant
Parking	Ample parking
Traffic Counts	S. Jackson St. 20,500 VPD
Lease Rate	Call for Details
Additional Details	Amazing setting with views of the 100-year old bell tower Part of Bell Tower Green Park, a brand new public park The park expects 150+ events/year



DEMOGRAPHICS

RADIUS	1 MILE	3 MILE	5 MILE
2021 Population	8,653	33,448	55,025
Avg. Household Income	\$49,803	\$60,742	\$63,594
Median Household Income	\$34,117	\$44,662	\$47,504
Households	3,108	12,870	21,233
Daytime Employees	10,760	28,387	34,975

BELL TOWER GREEN PARK | RENDERINGS





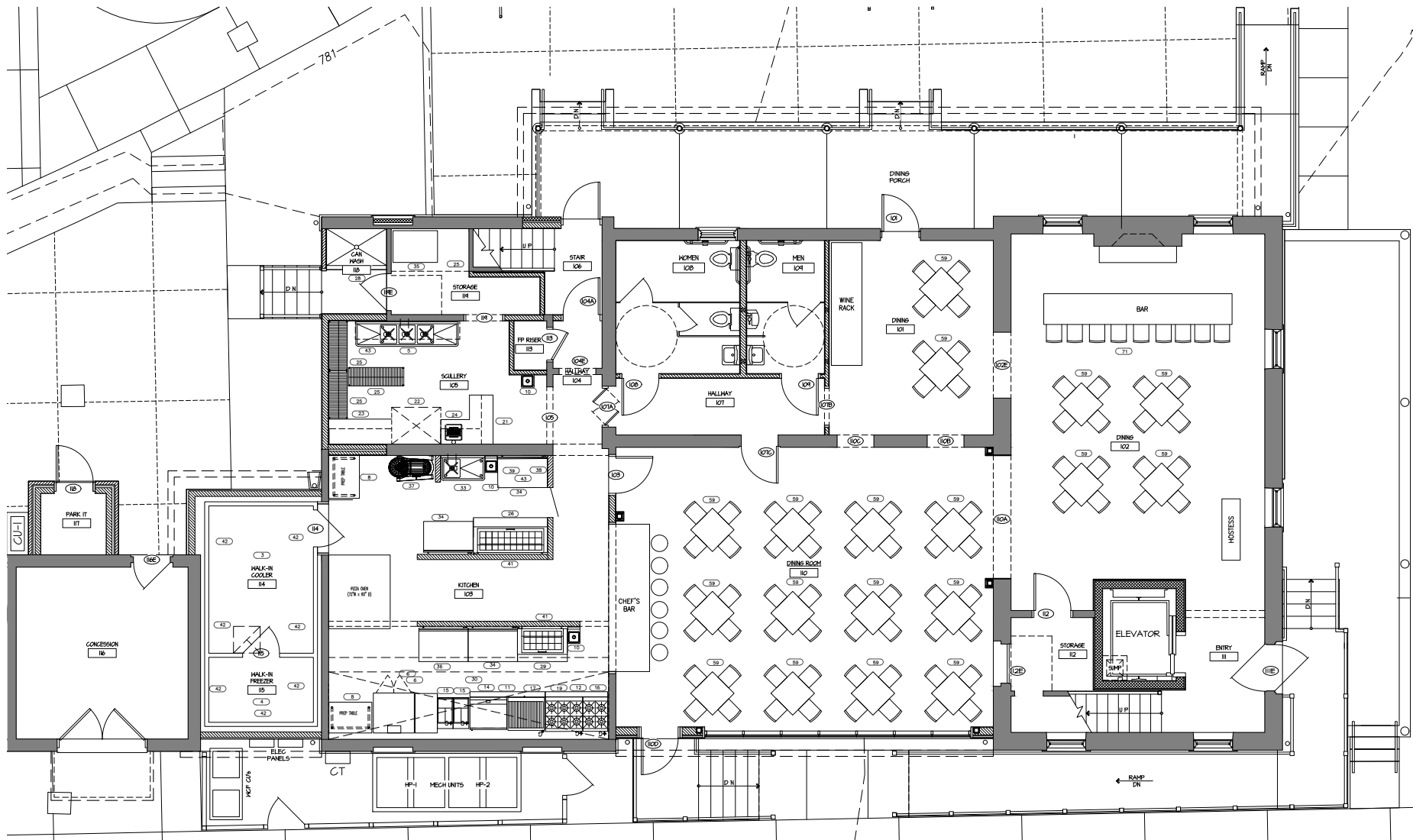
SALISBURY NORTH CAROLINA

Only 43 miles from Charlotte, Salisbury is the oldest continually populated colonial town in the western region of North Carolina. Salisbury is noted for its historic preservation, with five Local Historic Districts and ten National Register Historic Districts. Salisbury is a unique city in the Charlotte MSA with historic main street charm where public art is a mainstay in the city's physical, cultural and economic profile. Salisbury is the home to North Carolina soft drink, Cheerwine, regional supermarket, Food Lion, and Rack Room Shoes.



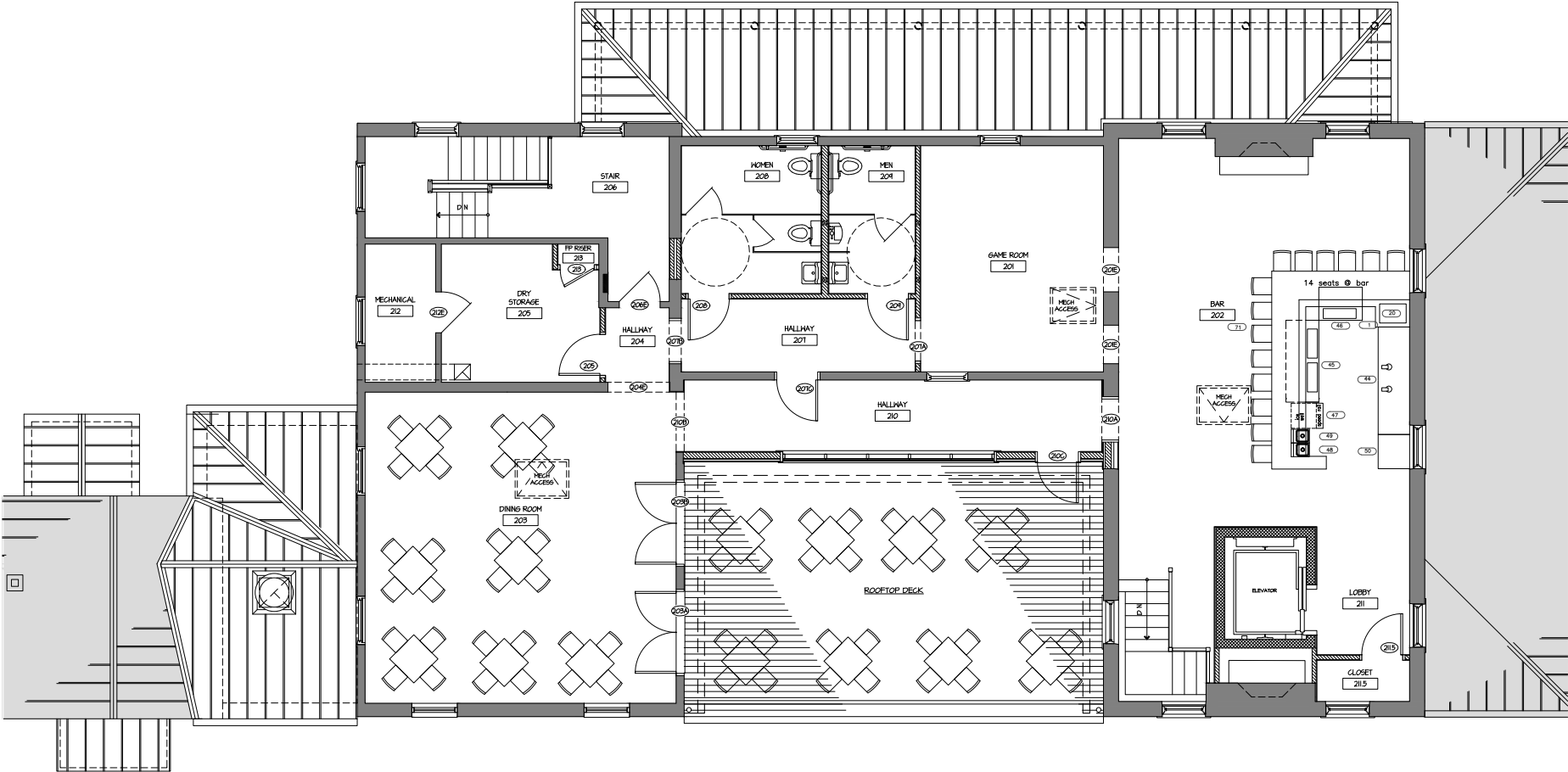
THE CITY OF
Salisbury
— North Carolina —

FLOOR PLAN | GROUND FLOOR



GROUND FLOOR





SECOND FLOOR





CONTACT FOR DETAILS

JOHN HADLEY

(704) 373-9797

JHadley@TheNicholsCompany.com



THE NICHOLS COMPANY

Website

www.TheNicholsCompany.com

Phone

Office (704) 373-9797

Fax (704) 373-9798

Address

1204 Central Avenue, Suite 201

Charlotte, NC 28204

This information has been obtained from sources believed to be reliable. While we do not doubt its accuracy, we have not verified it and make no guarantee, warranty or representation to independently confirm its accuracy and completeness.