

OFFICE SPACE

For Lease



555 WINDERLEY

555 Winderley Place
Maitland, FL 32751

555 Winderley is a multi-story office building featuring a newly renovated lobby, beautiful atrium, a tenant lounge equipped with complementary WiFi and vending cafe.

**NEWLY
RENOVATED**

**RSF AVAILABLE
9,969**



For more information, contact:

Tiffany Zullo
(407) 659.0120 x114 | TZullo@trpcre.com

www.trpcre.com

SPACE AVAILABLE

Suite	RSF
400	9,969 (Available 2/1/25)

CONCESSIONS & IMPROVEMENTS NEGOTIABLE



BUILDING FEATURES & AMENITIES

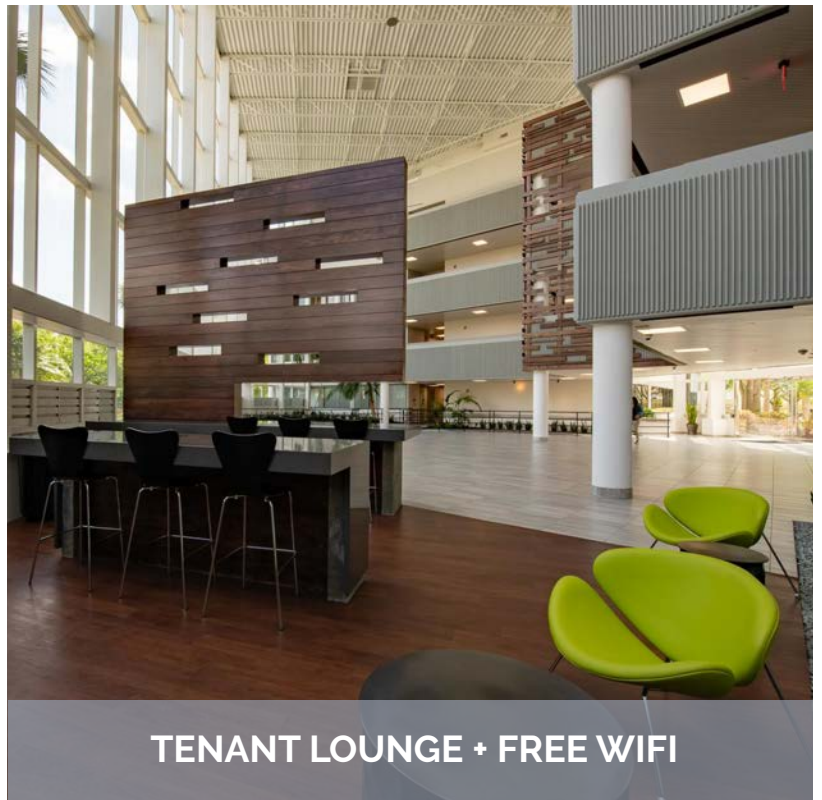
- ▶ Renovated Lobby, Corridor & Restrooms
- ▶ New Tenant Lounge Offering Free WiFi
- ▶ Beautiful 4-Story Atrium + Water Views
- ▶ Vending Cafe
- ▶ Telcom - (Cable/Fiber) Spectrum, Century Link & Crown Castle
- ▶ 24 Hour Building Access
- ▶ 2019 Energy Star Certified
- ▶ Fronting Maitland Blvd. & Across from RDV Sportsplex & Sam Sneads
- ▶ 4/1000 Parking Ratio
- ▶ Electric Car Charging Station



For more information, contact:
Tiffany Zullo
 (407) 659.0120 x114 | TZullo@trpcre.com



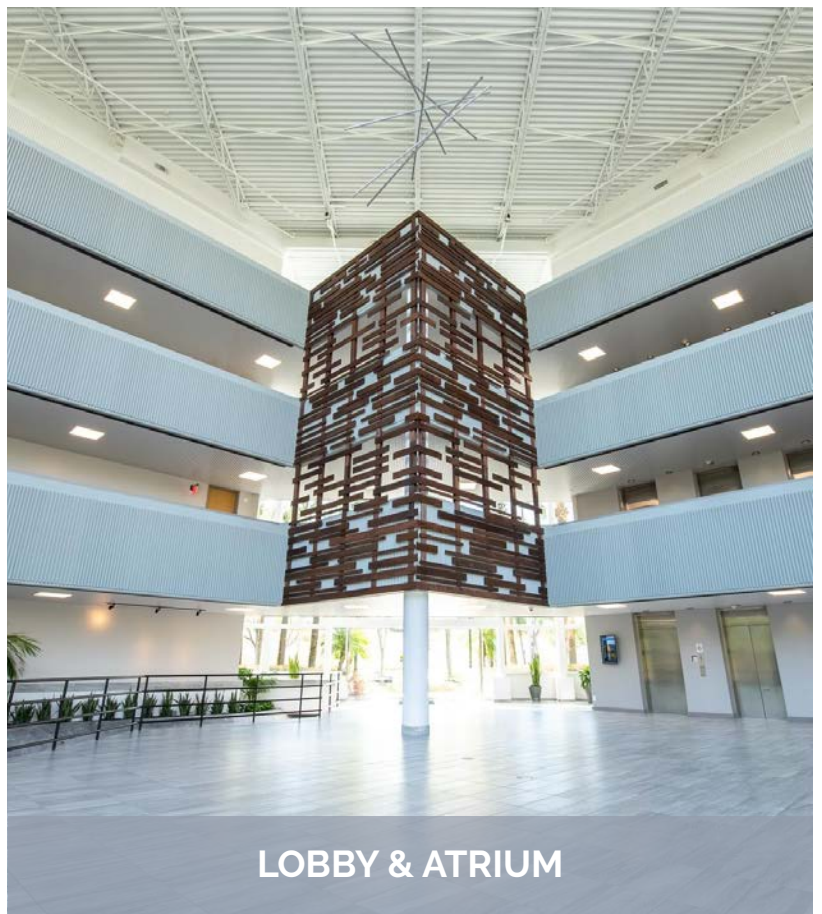
VENDING CAFE



TENANT LOUNGE + FREE WIFI



NEWLY RENOVATED
Lobby, Corridors & Restrooms



LOBBY & ATRIUM

LOCATION HIGHLIGHTS



RESTAURANTS/ CONVENIENCE

- | | |
|---|-----------------------------|
| 1 Fuzzy's Taco Shop | 8 Wraps Delight Cafe |
| 2 Publix | 9 Curry Bowl Orlando |
| 3 Mikado Japanese Buffet | 10 The Silly Grape |
| 4 Wendy's | 11 Nature's Table |
| 5 Chick-fil-A | 12 Greenhouse Cafe |
| 6 Sam Snead's Oak Grill and Tavern | 13 Applebee's |
| 7 Subway | 14 7-11 |

HOTELS

- | |
|--|
| 15 Courtyard by Marriott |
| 16 Homewood Suites by Hilton |
| 17 Sheraton Orlando North Hotel |

For more information, contact:

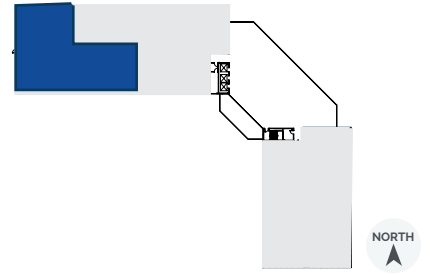
Tiffany Zullo

(407) 659.0120 x114 | TZullo@trpcre.com

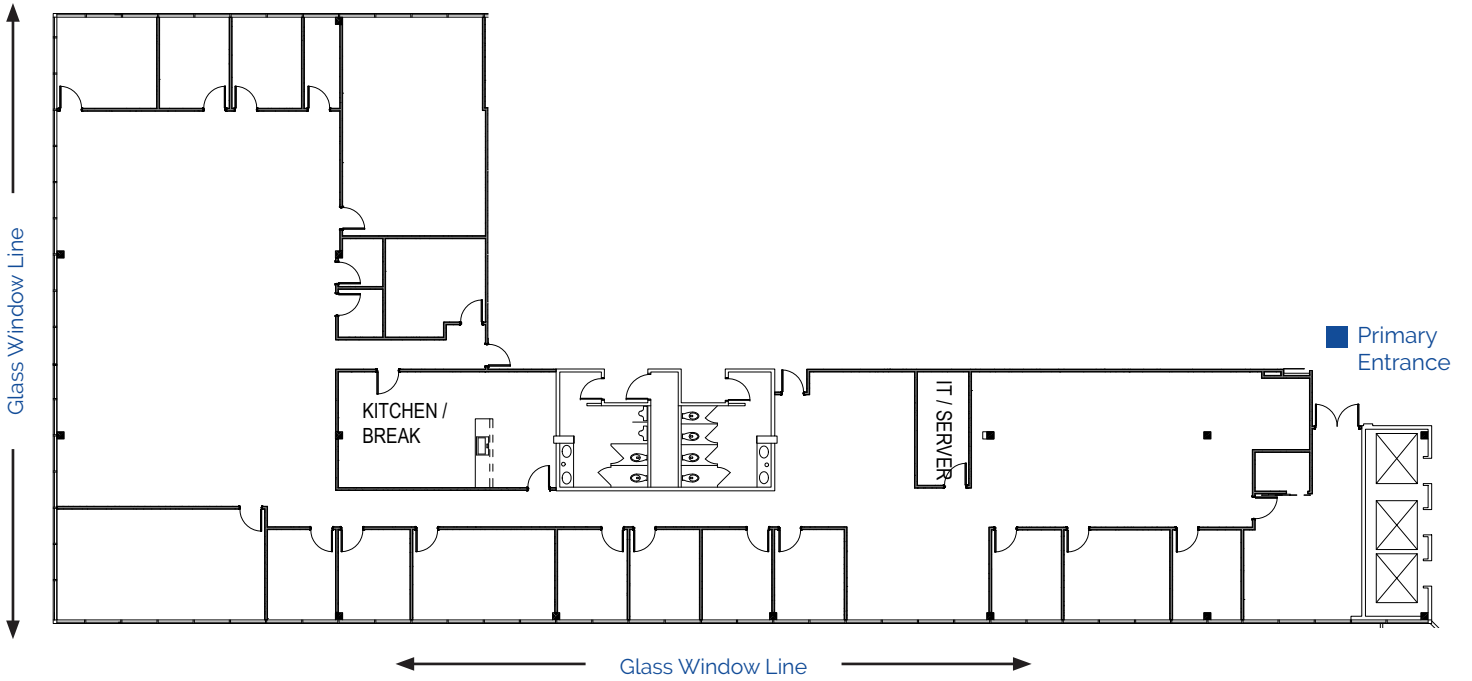
www.trpcre.com

4th
Floor

Suite 400: 9,969 RSF



Available 2/1/25



For more information, contact:

Tiffany Zullo
(407) 659.0120 x114 | TZullo@trpcre.com

www.trpcre.com