

UNIVERSITY

LOGISTICS CENTER

572,611 SF AVAILABLE

1860 WINDER HIGHWAY
GA-316/LAWRENCEVILLE SUBMARKET
DACULA, GEORGIA



SITE PLAN

UNIVERSITY LOGISTICS CENTER



BUILDING 100

UNIVERSITY LOGISTICS CENTER

FEATURES

ADDRESS

University Logistics Center
1860 Winder Highway
Dacula, Georgia 30019

SQUARE FEET

175,024 SF for Lease

OFFICE

Build-to-Suit

CONSTRUCTION

Rear Load

CLEAR HEIGHT

32'

SPRINKLER SYSTEM

ESFR

AUTO PARKING

113 Spaces

TRAILER PARKING

54 Spaces

DOCK-HIGH DOORS

(40) 9' x 10'
(2) 12' x 14'
(4 with 35,000-lb Levelers)

DRIVE-IN DOORS

(2)

POWER

3,000 Amp, 3-Phase, 277/480 Volt

COLUMN SPACING

54' x 48'

BUILDING DEPTH

250'

FLOOR SLAB

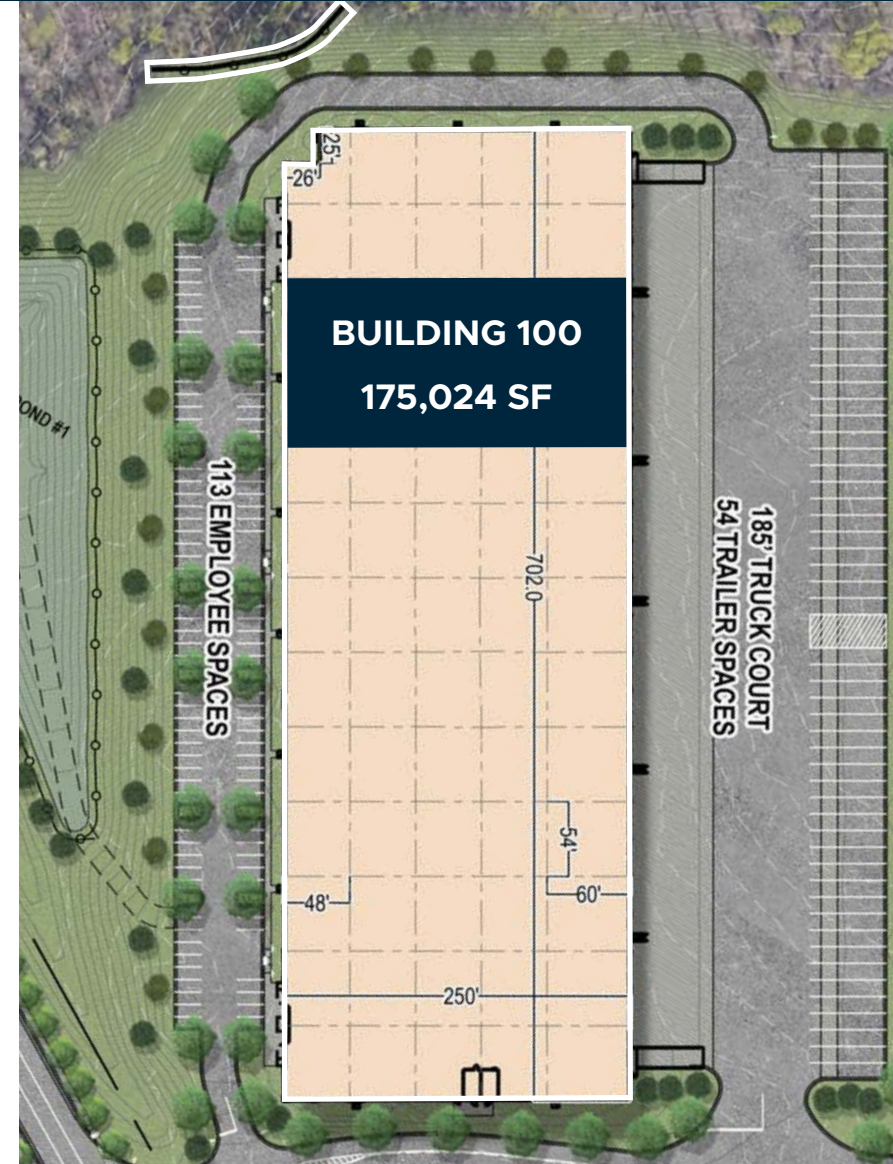
6", 4,000 PSI

ROOF SYSTEM

45-Mil TPO

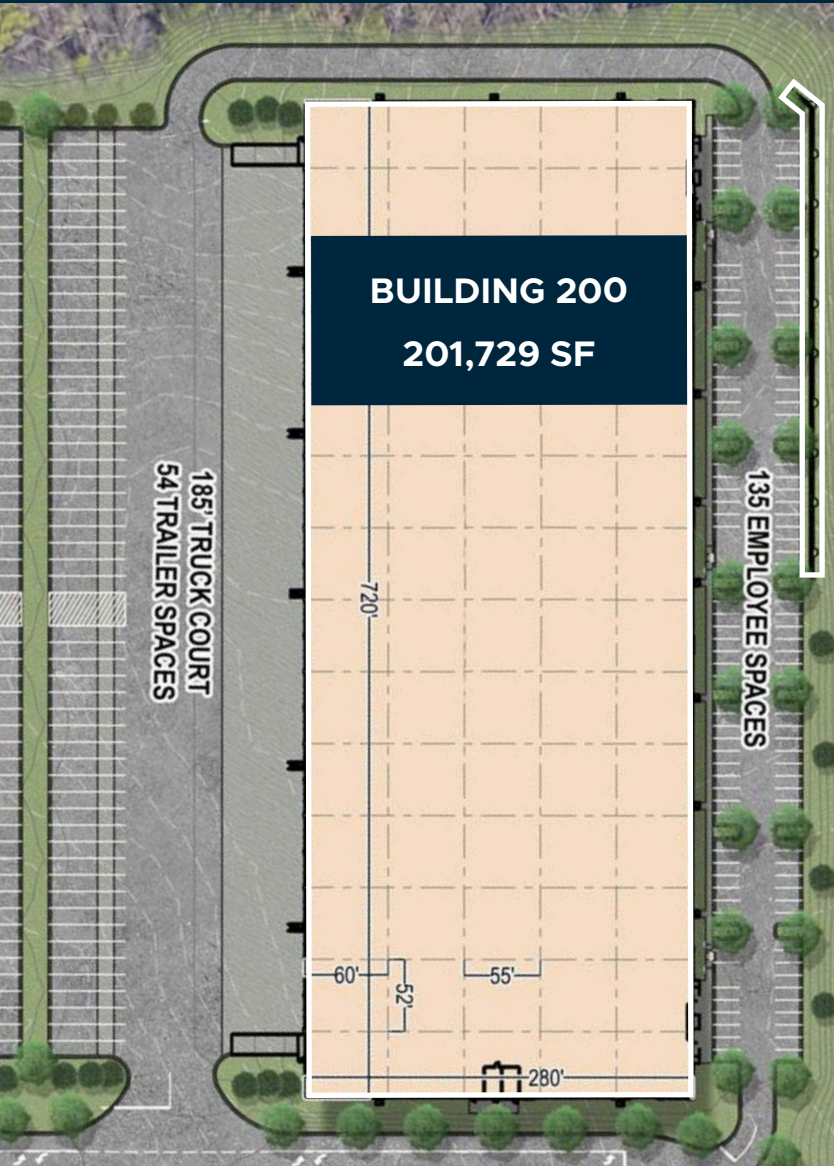
TRUCK COURT DEPTH

185'



BUILDING 200

UNIVERSITY LOGISTICS CENTER



FEATURES

ADDRESS

University Logistics Center
1860 Winder Highway
Dacula, Georgia 30019

SQUARE FEET

201,729 SF for Lease

OFFICE

Build-to-Suit

CONSTRUCTION

Rear Load

CLEAR HEIGHT

32'

SPRINKLER SYSTEM

ESFR

AUTO PARKING

135 Spaces

TRAILER PARKING

54 Spaces

DOCK-HIGH DOORS

(43) 9' x 10'
(2) 12' x 14'
(4 with 35,000-lb Levelers)

DRIVE-IN DOORS

(2)

POWER

3,000 Amp, 3-Phase, 277/480 Volt

COLUMN SPACING

55' x 52'

BUILDING DEPTH

280'

FLOOR SLAB

6", 4,000 PSI

ROOF SYSTEM

45-Mil TPO

TRUCK COURT DEPTH

185'

BUILDING 300

UNIVERSITY LOGISTICS CENTER

FEATURES

ADDRESS

University Logistics Center
1860 Winder Highway
Dacula, Georgia 30019

SQUARE FEET

195,858 SF for Lease

OFFICE

Build-to-Suit

CONSTRUCTION

Rear Load

CLEAR HEIGHT

32'

SPRINKLER SYSTEM

ESFR

AUTO PARKING

129 Spaces

TRAILER PARKING

37 Spaces

DOCK-HIGH DOORS

(32) 9' x 10'
(2) 12' x 14'
(4 with 35,000-lb Levelers)

DRIVE-IN DOORS

(2)

POWER

1,600 Amp, 3-Phase, 277/480 Volt

COLUMN SPACING

54' x 48'

BUILDING DEPTH

300'

FLOOR SLAB

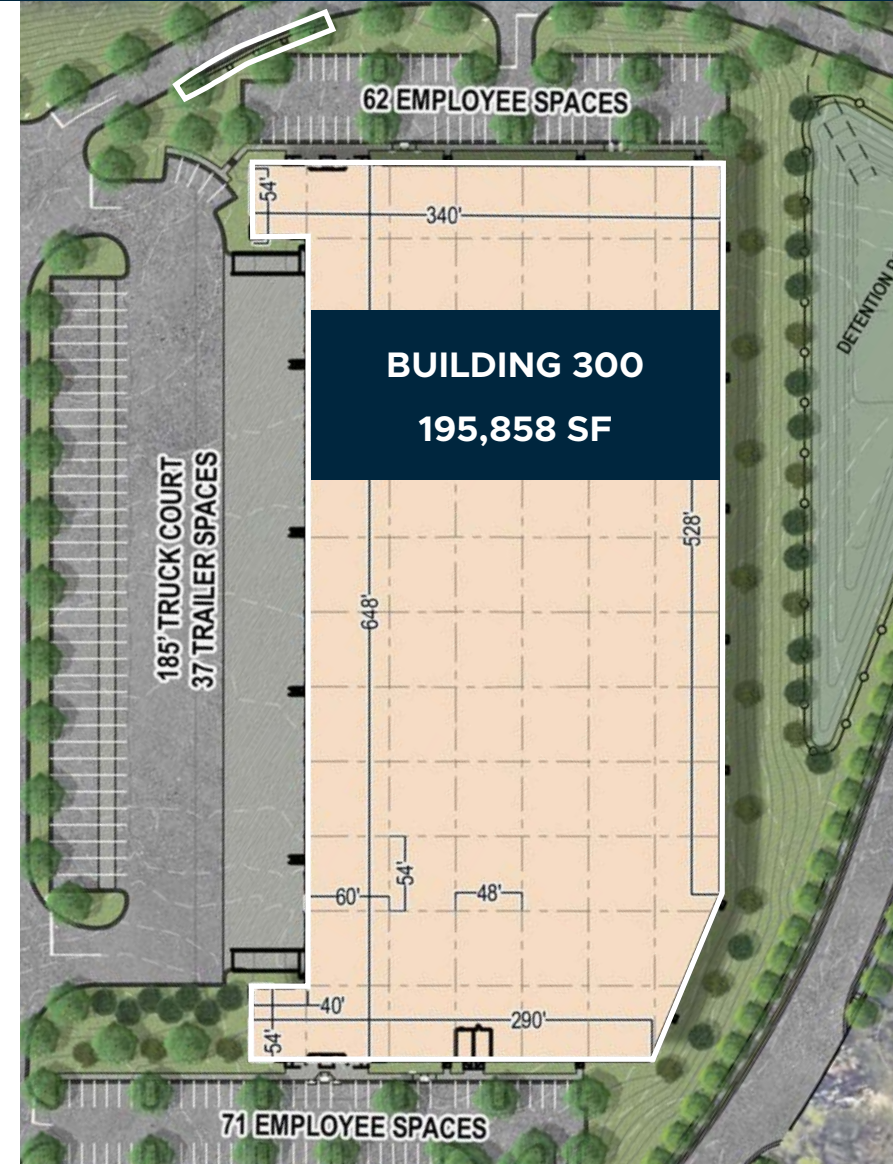
6", 4,000 PSI

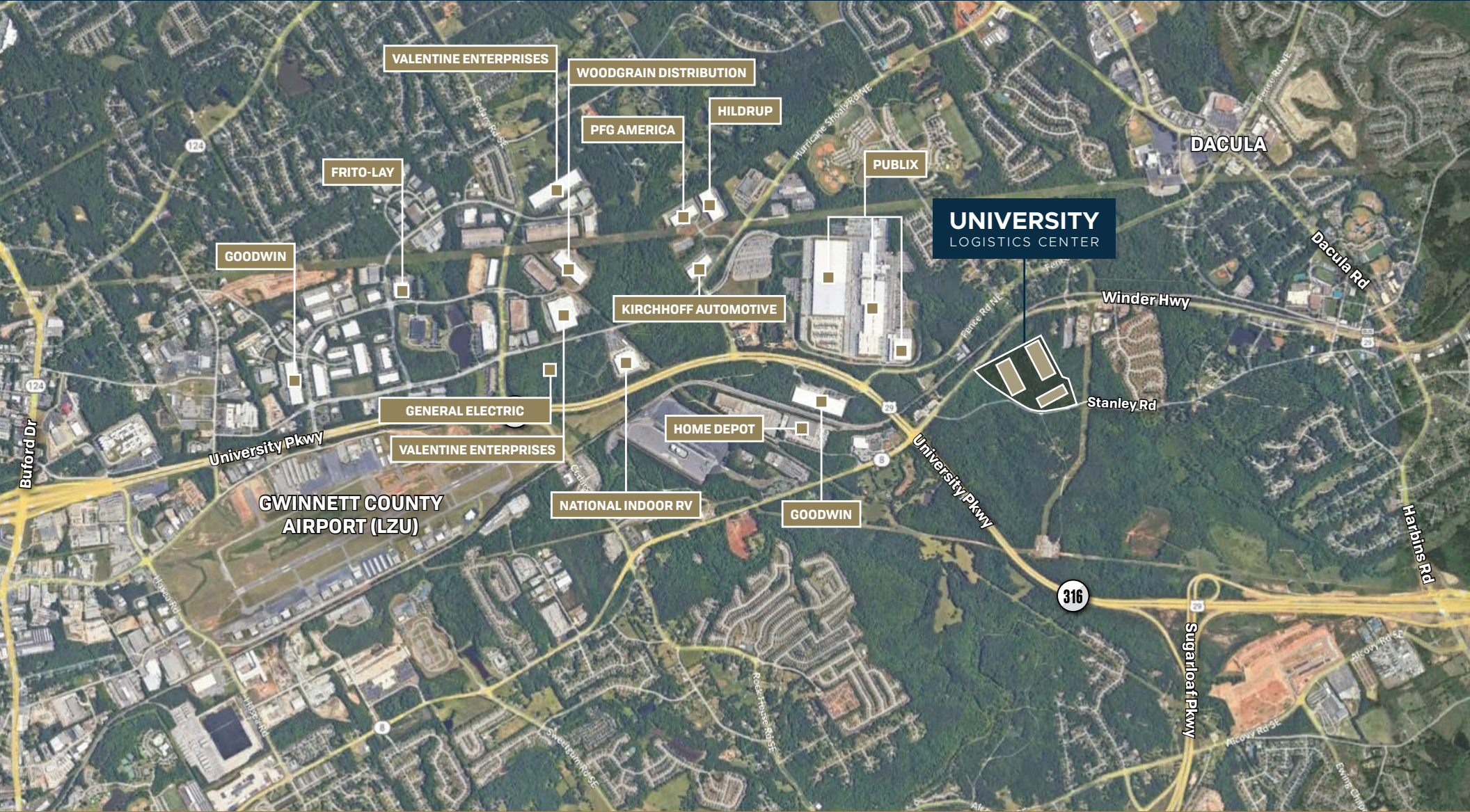
ROOF SYSTEM

45-Mil TPO

TRUCK COURT DEPTH

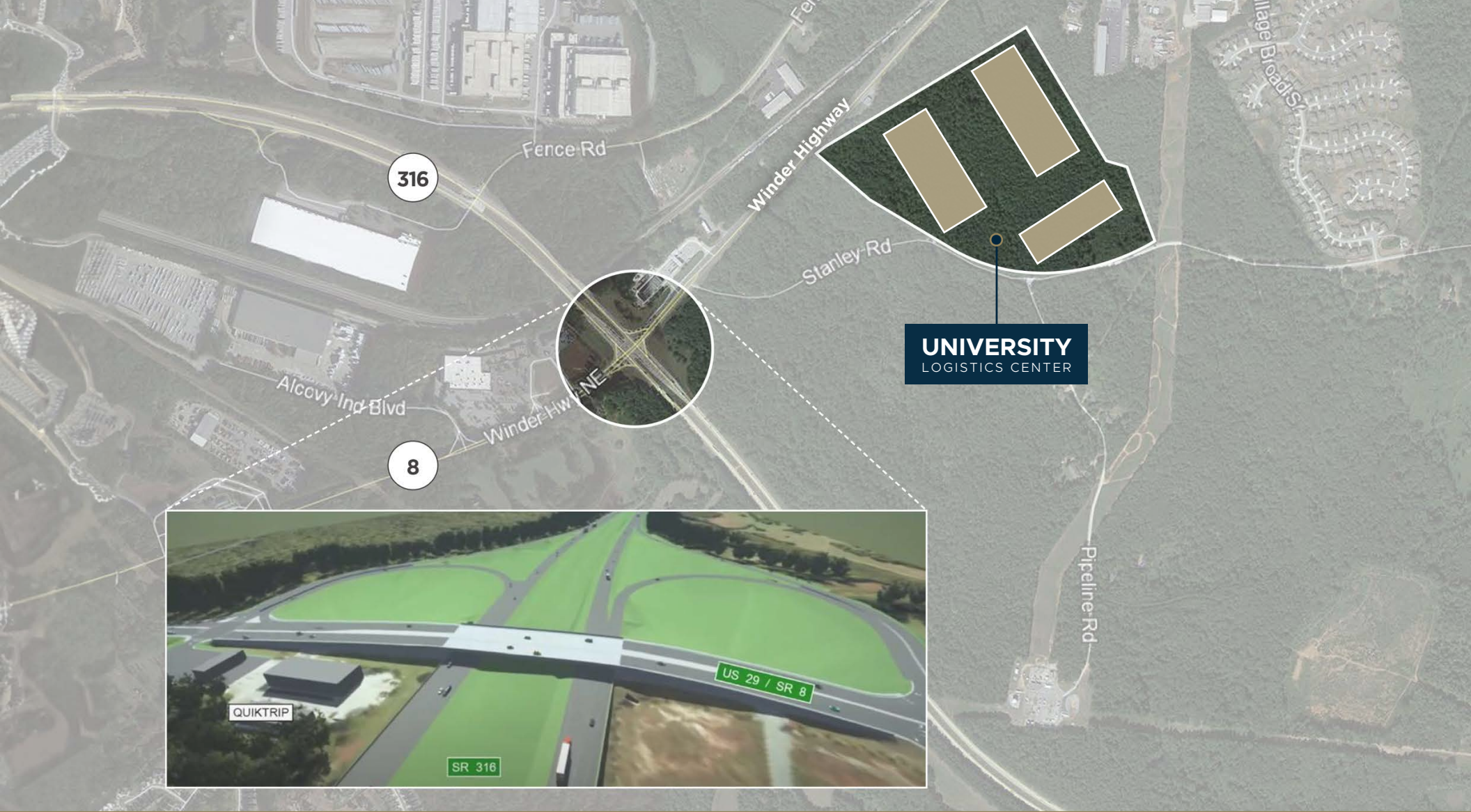
185'





PLANNED INTERCHANGE

UNIVERSITY LOGISTICS CENTER



INTERSTATE

I-85	10.6 miles
I-285	21.2 miles

RAIL

CSX Intermodal (Palmer Yard)	3.3 miles
CSX Intermodal (Athens)	36.3 miles

AIR

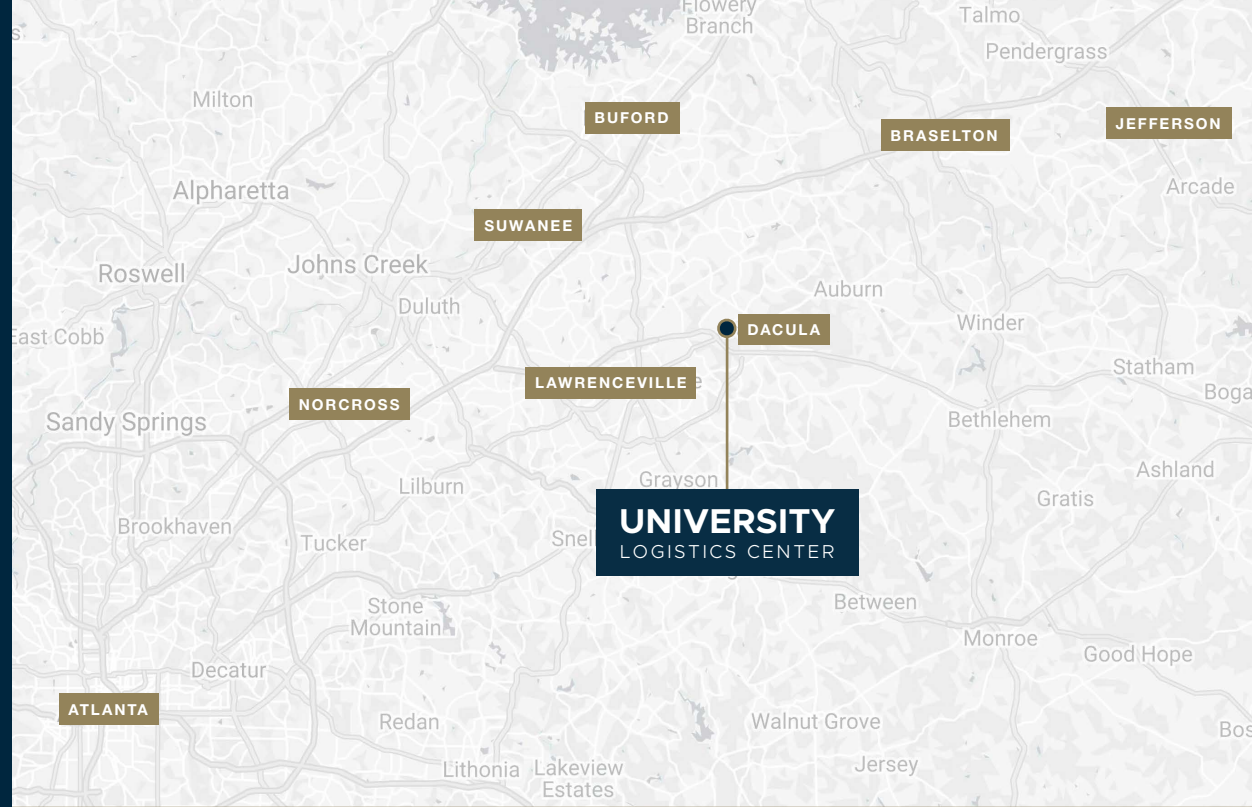
Hartsfield-Jackson Atlanta Int'l Airport	44.8 miles
--	------------

PORT CITIES

Savannah, GA	282 miles
Jacksonville, FL	380 miles
Charleston, SC	277 miles
Mobile, AL	363 miles
New Orleans, LA	507 miles
Miami, FL	693 miles



Information is deemed from reliable sources. No warranty is made as to its accuracy.



The Heart of Logistics in the Southeast

ATLANTA



World's busiest and most efficient airport



80% of U.S. can be reached within 2 flight hours



75% of U.S. can be reached within 2 truckload delivery days



Atlanta is the largest distribution hub in the southeastern United States.

Over 5,000 miles of Georgia rail



UPS, FedEx, DHL & Airborne Express all have major distribution hubs in the area



11 major sea & inland ports within 350 miles

CROW HOLDINGS

INDUSTRIAL

JOHN BATEMAN

404.665.9997

jbateman@crowholdings.com

JON DAVIS

262.909.7750

jdavis@crowholdings.com

UNIVERSITY LOGISTICS CENTER



For more information, please contact:

NATHAN ANDERSON

404.812.4020

nanderson@naibg.com

DARREN BUTLER

404.812.4021

dbutler@naibg.com

NAI Brannen Goddard