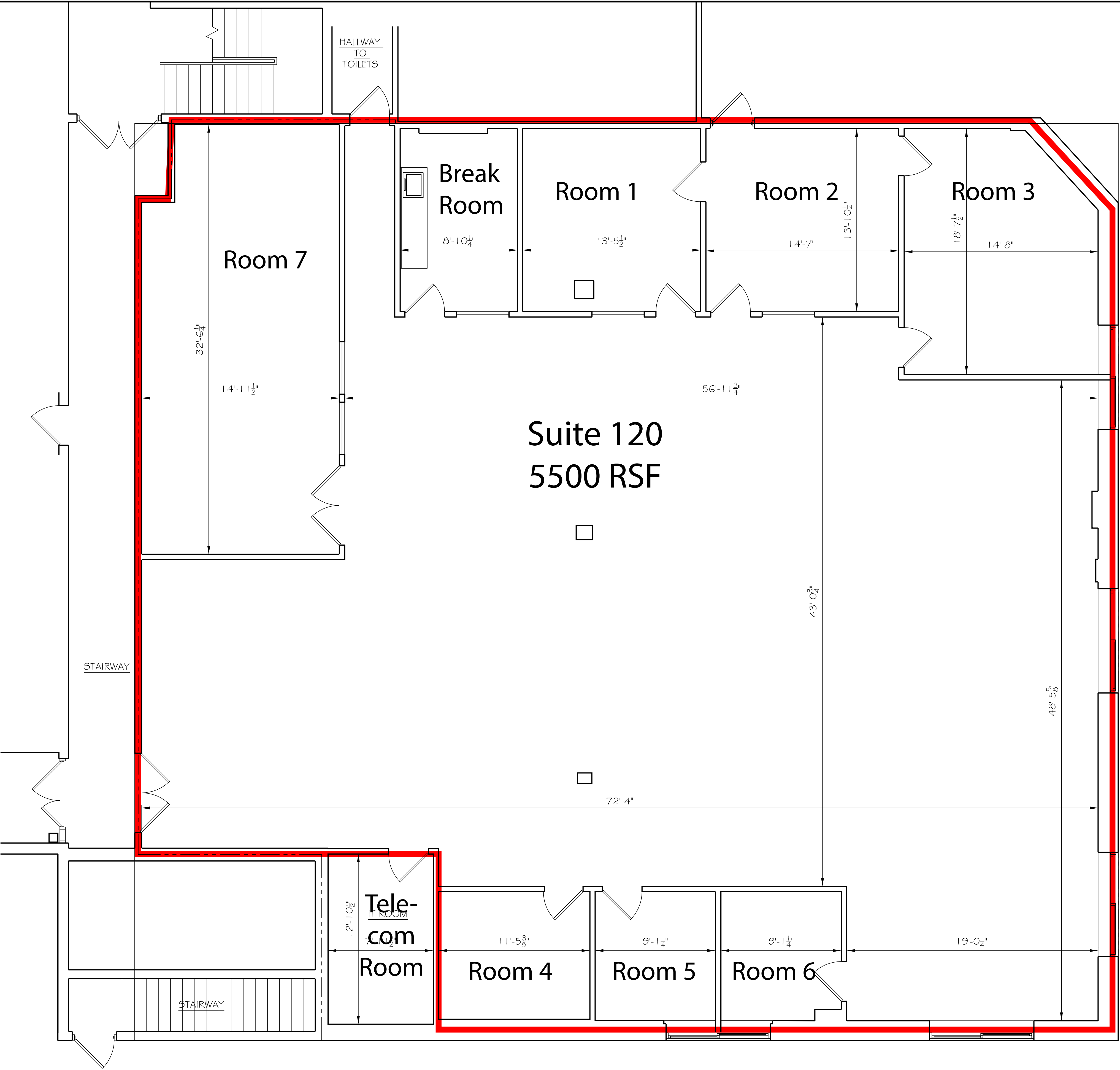


Scale = 4 feet per Inch



CORNERSTONE ARCHITECTS INC.
8 Calista Terrace, Westford, MA 01886
(ph) 978-399-0240 (fax) 978-399-0260

FIRST FLOOR - EXISTING CONDITIONS
SUITE 120
42 NAGOG PARK - ACTON, MA.

Revisions
Scale: 1/4" = 1'-0"
Job No. 1142 Date: 2-28-11
Drawing No.
A-1.2