



9,000 SF  
Available for sublease

# 2488 West 2<sup>nd</sup> Avenue

Denver, CO 80223

## Property Specifications

- Available: Immediately
- Total SF: 9,000 SF
- 70% Office / 30% Warehouse
- Term: Through 9/30/2029
- Lease Rate: \$13.50/SF NNN
- Clear Height: 12'
- One (1) dock door

## Property Highlights

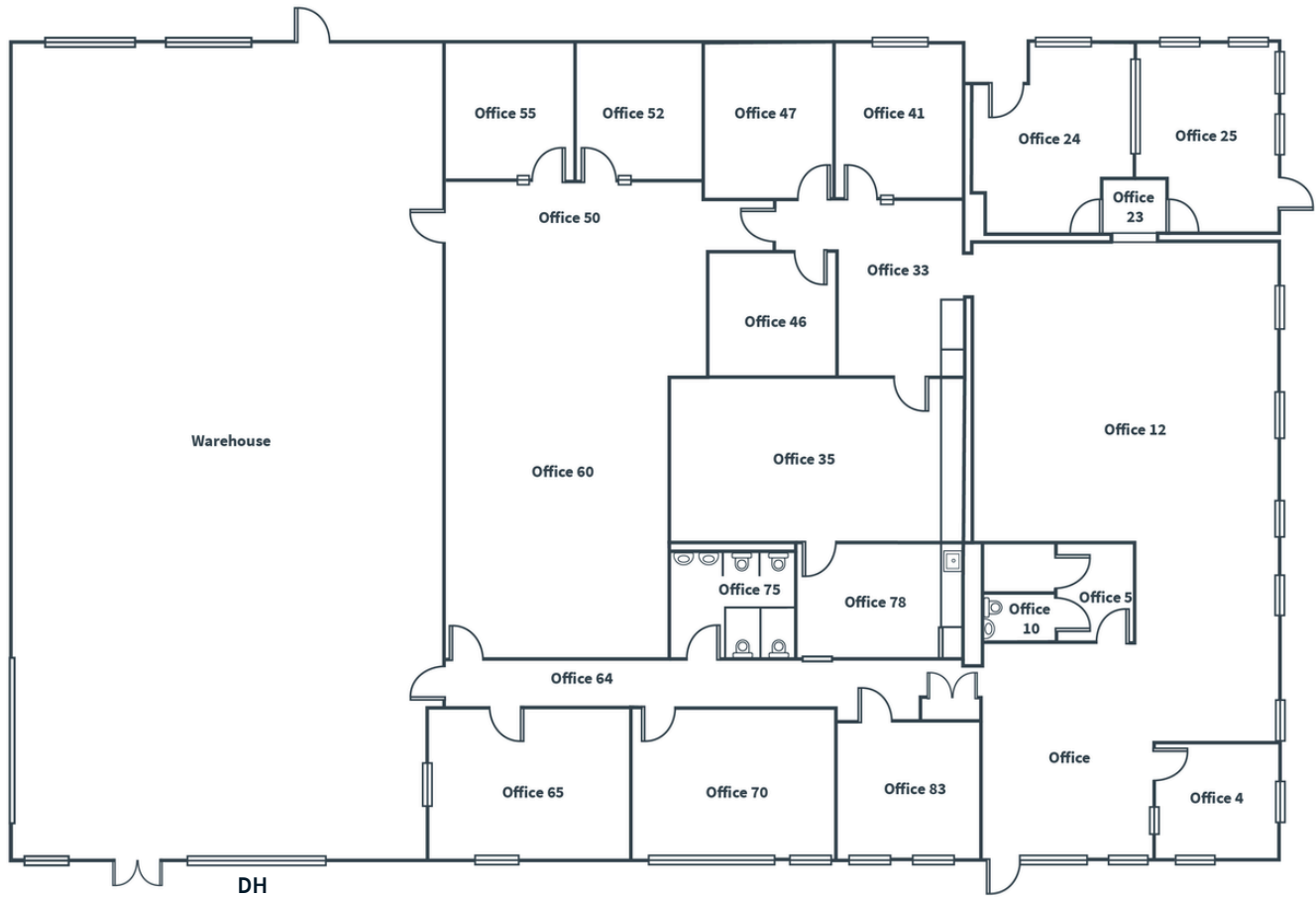
- End cap unit
- New office buildout with training room
- Excellent Central Denver location







[Click to view  
space](#)



Please contact brokers for more information:

**Alec Torkelson**

Vice President

+1 720 418 8031

[alec.torkelson@jll.com](mailto:alec.torkelson@jll.com)

**Chris Schultz**

Senior Vice President

+1 303 260 6531

[chris.schultz@jll.com](mailto:chris.schultz@jll.com)

Although information has been obtained from sources deemed reliable, neither Owner nor JLL makes any guarantees, warranties or representations, express or implied, as to the completeness or accuracy as to the information contained herein. Any projections, opinions, assumptions or estimates used are for example only. There may be differences between projected and actual results, and those differences may be material. The Property may be withdrawn without notice. Neither Owner nor JLL accepts any liability for any loss or damage suffered by any party resulting from reliance on this information. If the recipient of this information has signed a confidentiality agreement regarding this matter, this information is subject to the terms of that agreement. ©2025. Jones Lang LaSalle IP, Inc. All rights reserved