

FOR SALE

APPROX. 3.5 BUILDABLE ACRES

7752 S. 5th Street. | Ridgefield, WA 98642



900 Washington St, Suite 850, Vancouver, WA
360.597.0574 | www.fg-cre.com

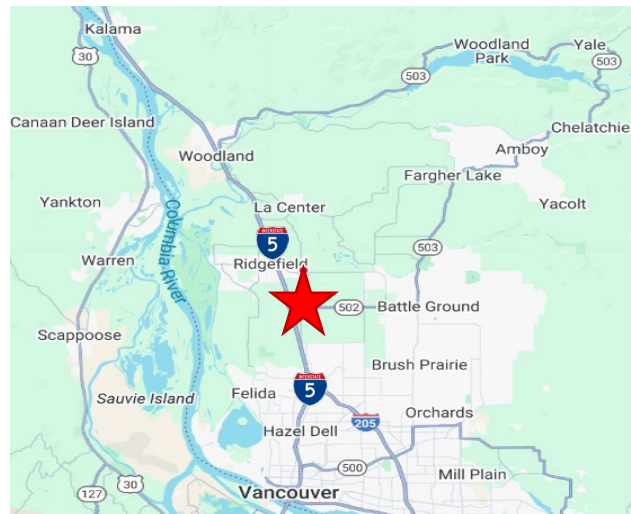


PROPERTY HIGHLIGHTS

- Located in the Ridgefield Submarket
- Approximately 3.5 Buildable acres (10 gross acres)
- Access to 1-5 to Pioneer Street (exit 14), west to S. 5th St.
- Zoning: Employment "E" Light Manufacturing
[Zoning Codes](#)
- Tax lot: 214192-000
- Utilities in S. 5th St.
- Sales Price: \$1,372,000.00
(\$9.00 per buildable SF of land)
- Existing Residence: 1,500/SF



Residence 1,500 SF



For More Information:

Eric Fuller, CCIM, SIOR | 360.901.2827 | efuller@fg-cre.com

KC Fuller | 360.597.0569 | kfuller@fg-cre.com

FOR SALE

APPROX. 3.5 BUILDABLE ACRES

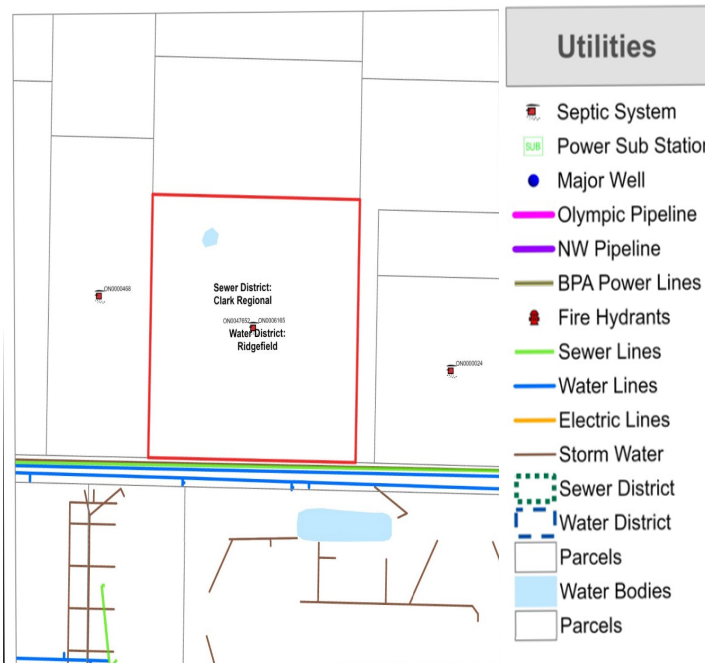
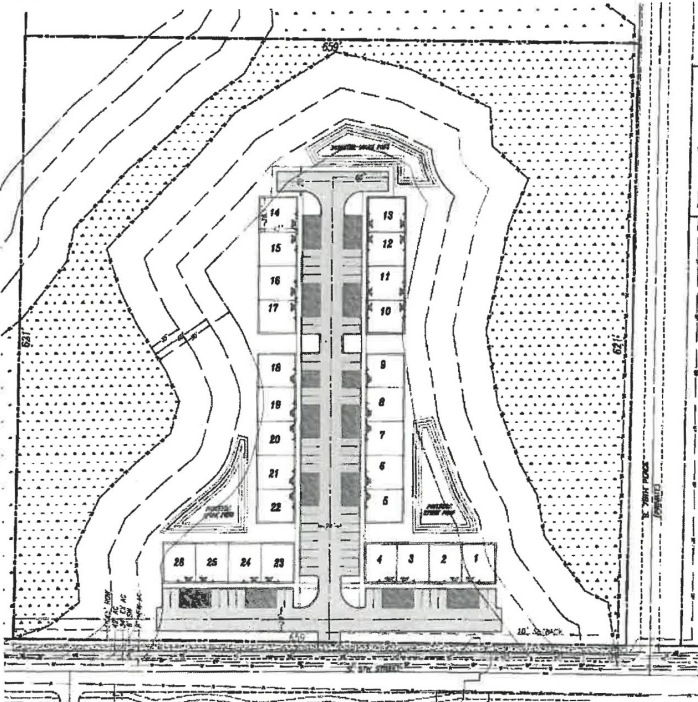
7752 S. 5th Street. | Ridgefield, WA 98642



900 Washington St, Suite 850, Vancouver, WA
360.597.0574 | www.fg-cre.com



PRE-APP SITE PLAN



This statement with the information it contains is given with the understanding that all the negotiations relating to the purchase, rental or leasing of the property described above shall be conducted through this office. The above information, while not guaranteed, has been secured from sources we believe to be reliable.