

20820 Midstar Drive
Bowling Green, OH

AVAILABLE

43,735 SF
Building
on 24.1 AC

Class B Truck Terminal
Facility with 80 Doors
& Excellent Proximity
to I-75

CBRE

YELLOW

20820 Midstar Drive | Bowling Green, OH

Property Overview

- **Situated on 24.1 Acres:** Opportunity for Expansion
- **Excellent Proximity** to I-75 (1.5 Miles), near the I-475 Interchange (6.5 Miles) & the I-90 Interchange (10 Miles)
- **Central Location to Major Population Centers:** Cleveland, Detroit, Chicago, Milwaukee, Pittsburgh, Indianapolis, Columbus

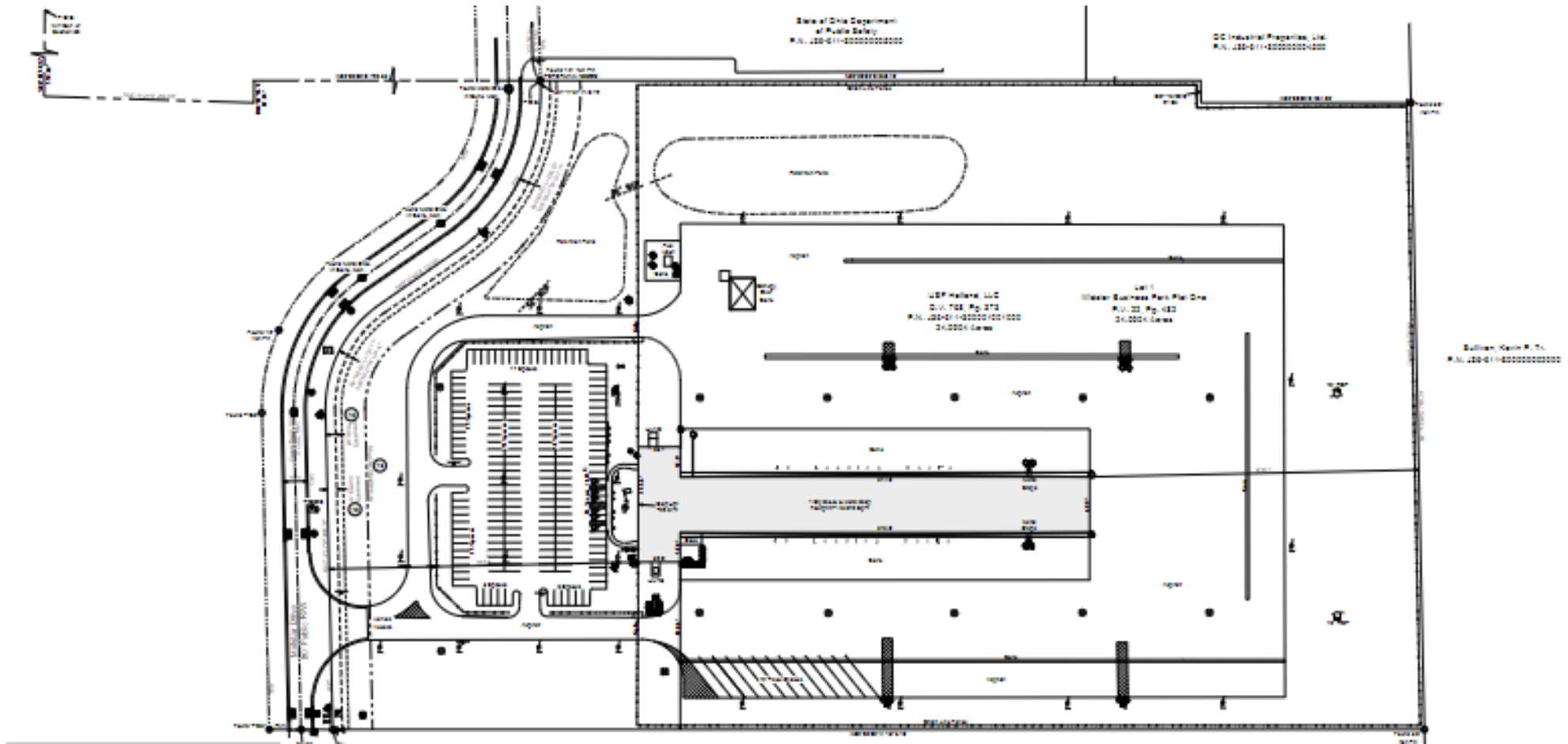
BUILDING SPECIFICATIONS

Spec Type	Spec Details
Total SF	43,735 SF
Warehouse SF	36,050 SF
Office SF	7,685 SF
Doors	80
Acreage	24.1
Clear Height (Ft)	20'
Parking Stalls	80
Year Built	2001

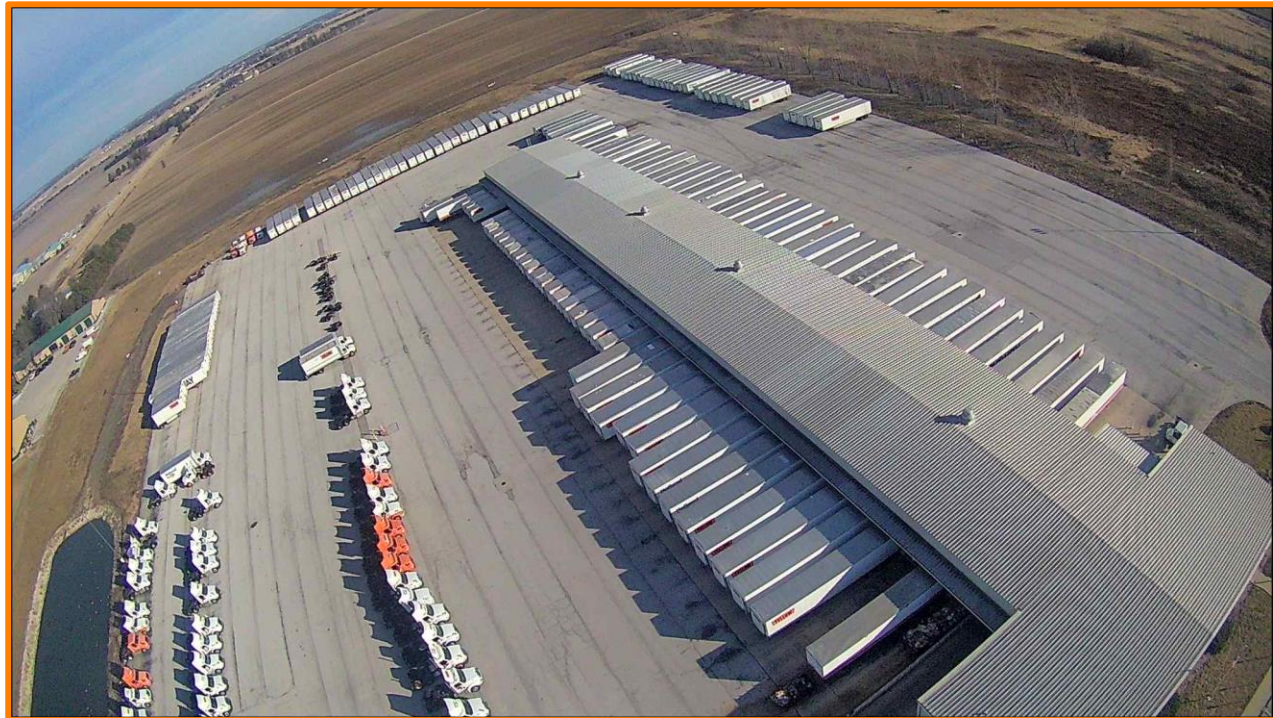


Site Plan

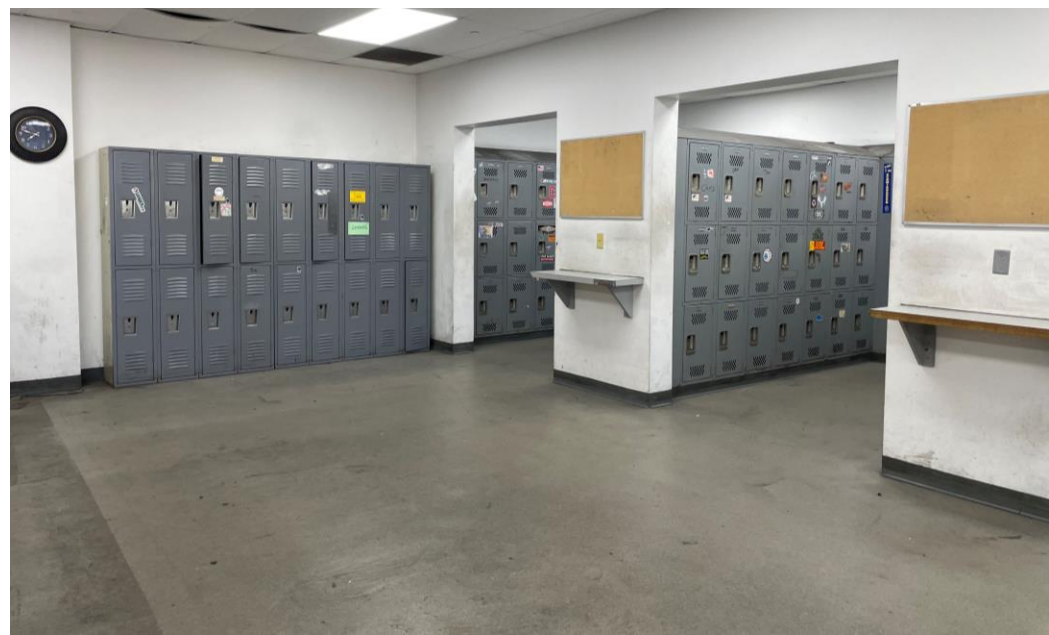
20820 Midstar Drive | Bowling Green, OH



Building Photos



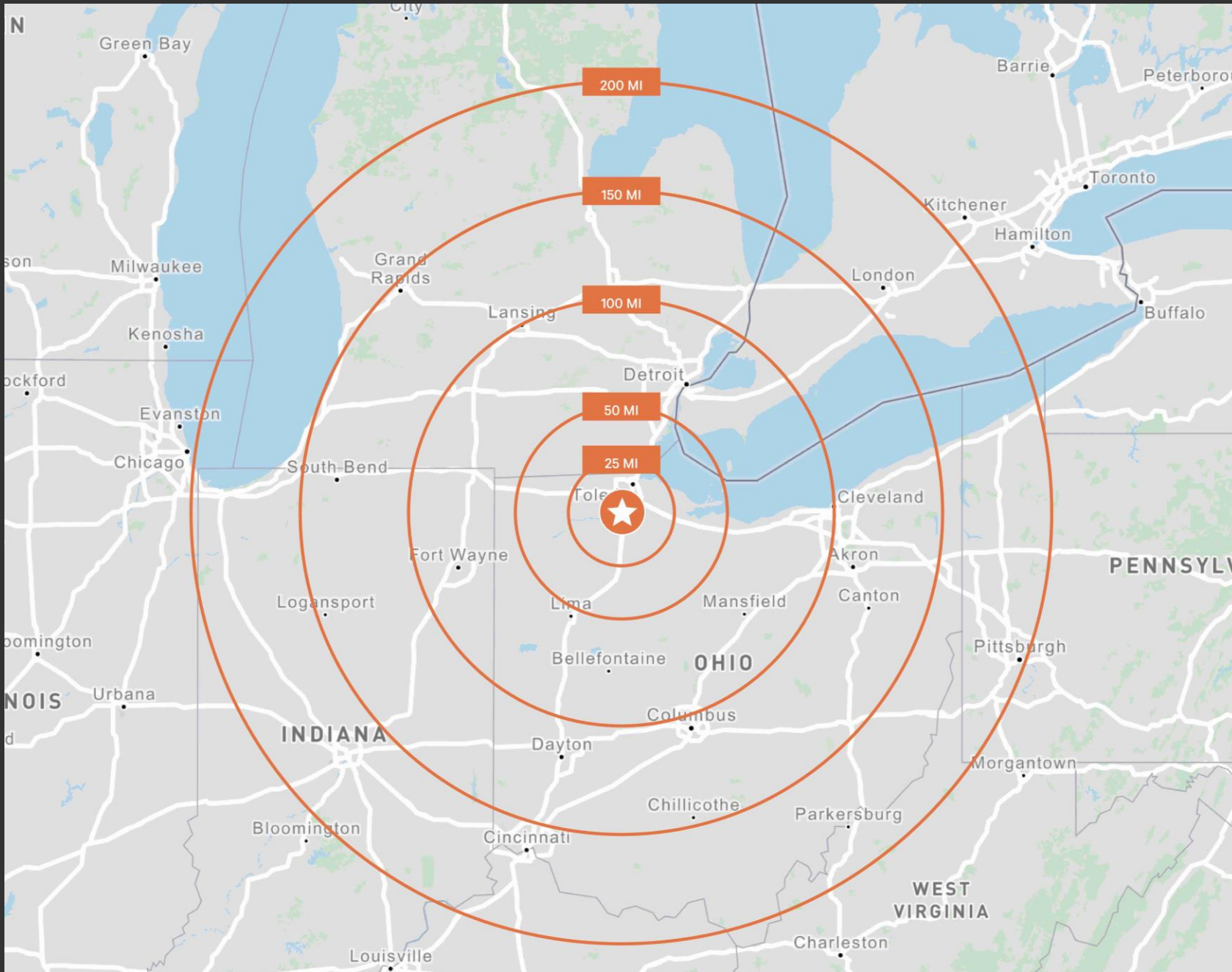
Building Photos | Office



Aerial Map



Location Map



AVAILABLE

20820 Midstar Drive

43,735 SF Building on 24.1 AC

Mike Petrigan, SIOR

First Vice President
+1 216 363 6435
mike.petrigan@cbre.com

Sue Fegen

Associate
+1 216 906 0022
sue.fegen@cbre.com

CBRE, Inc.

950 Main Avenue
Suite 200
Cleveland, Ohio 44113

CBRE

YELLOW

© 2024 CBRE, Inc. All rights reserved. This information has been obtained from sources believed reliable but has not been verified for accuracy or completeness. CBRE, Inc. makes no guarantee, representation or warranty and accepts no responsibility or liability as to the accuracy, completeness, or reliability of the information contained herein. You should conduct a careful, independent investigation of the property and verify all information. Any reliance on this information is solely at your own risk. CBRE and the CBRE logo are service marks of CBRE, Inc. All other marks displayed on this document are the property of their respective owners, and the use of such marks does not imply any affiliation with or endorsement of CBRE. Photos herein are the property of their respective owners. Use of these images without the express written consent of the owner is prohibited.