



FINLAYPACIFIC  
commercial real estate

633 HOWARD STREET  
SAN FRANCISCO, CA



For information, please contact our  
exclusive listing agent:

**Matthew Brasler**

Lic.01260686

Principal

415.271.5297

[mbrasler@finlaypacific.com](mailto:mbrasler@finlaypacific.com)



**Finlay Pacific**

233 Sansome Street

Suite 700

San Francisco, CA 94104

[www.finlaypacific.com](http://www.finlaypacific.com)





## Building Highlights

- Prime location – New Montgomery and Howard Streets
- Private entrance – 2<sup>nd</sup> floor walk up
- 12 foot, exposed wood ceilings with skylights
- Highway 280 and the Bay Bridge



## Second floor ± 5,575 rsf

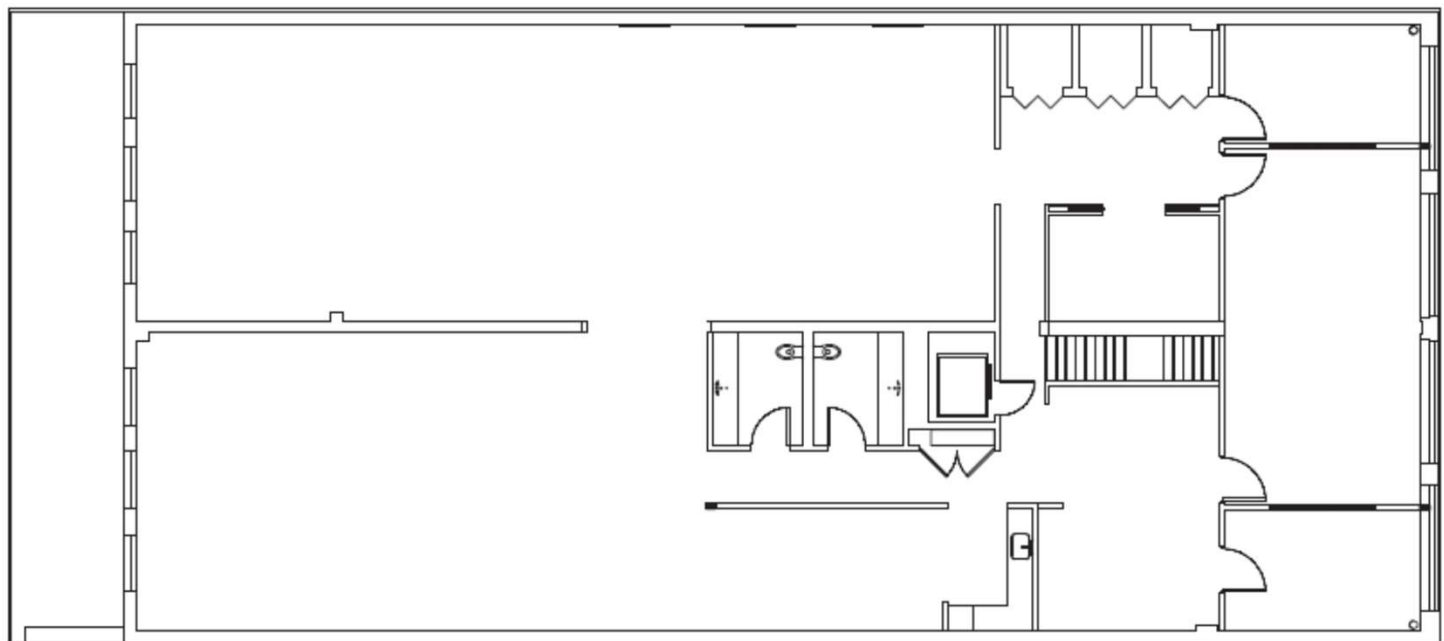
- 60+ workstations in place
- 3 phone rooms
- Large conference room which can be divided into two rooms
- Three conference rooms
- New paint and carpeting
- Great natural light
- Furniture Available





633 HOWARD STREET  
SAN FRANCISCO, CA  
2<sup>nd</sup> floor – 5,575 square feet

2nd Floor







633 HOWARD STREET  
SAN FRANCISCO, CA  
2<sup>nd</sup> floor – 5,575 square feet







## Contact Us

For information, please contact our  
exclusive listing agent:



### Matthew Brasler

Lic.01260686

Principal

415.271.5297

[mbrasler@finlaypacific.com](mailto:mbrasler@finlaypacific.com)



### Finlay Pacific

233 Sansome Street

Suite 700

San Francisco, CA 94104

[www.finlaypacific.com](http://www.finlaypacific.com)