

~ *New Industrial Building Available in Portage la Prairie* ~



PRICE REDUCED TO \$975,000

93 Poplar Bluff

PORTAGE LA PRAIRIE, MB

DAWSON GROENING, Advisor, Sales & Leasing
(204) 985-1383
dawson.groening@capitalgrp.ca

ERIC OTT, Associate Vice President, Sales & Leasing
(204) 985-1378
eric.ott@capitalgrp.ca
Services provided by Eric A. Ott Personal Real Estate Corporation


Capital
COMMERCIAL REAL ESTATE
SERVICES INC.

capitalgrp.ca

Property Details

BUILDING AREA (+/-) 5,400 sq. ft.

LAND AREA (+/-) 5.12 acres

SALE PRICE ~~\$1,200,000~~ **\$975,000**

PROPERTY TAXES \$3,880.06

LOADING (4) 16ft. overhead doors

ZONING MP - Industrial Poplar Bluff Zone

CLEAR HEIGHT (+/-) 18 ft.

ELECTRICAL 400 Amp, 220 Volt, Single Phase service

AVAILABILITY Immediately

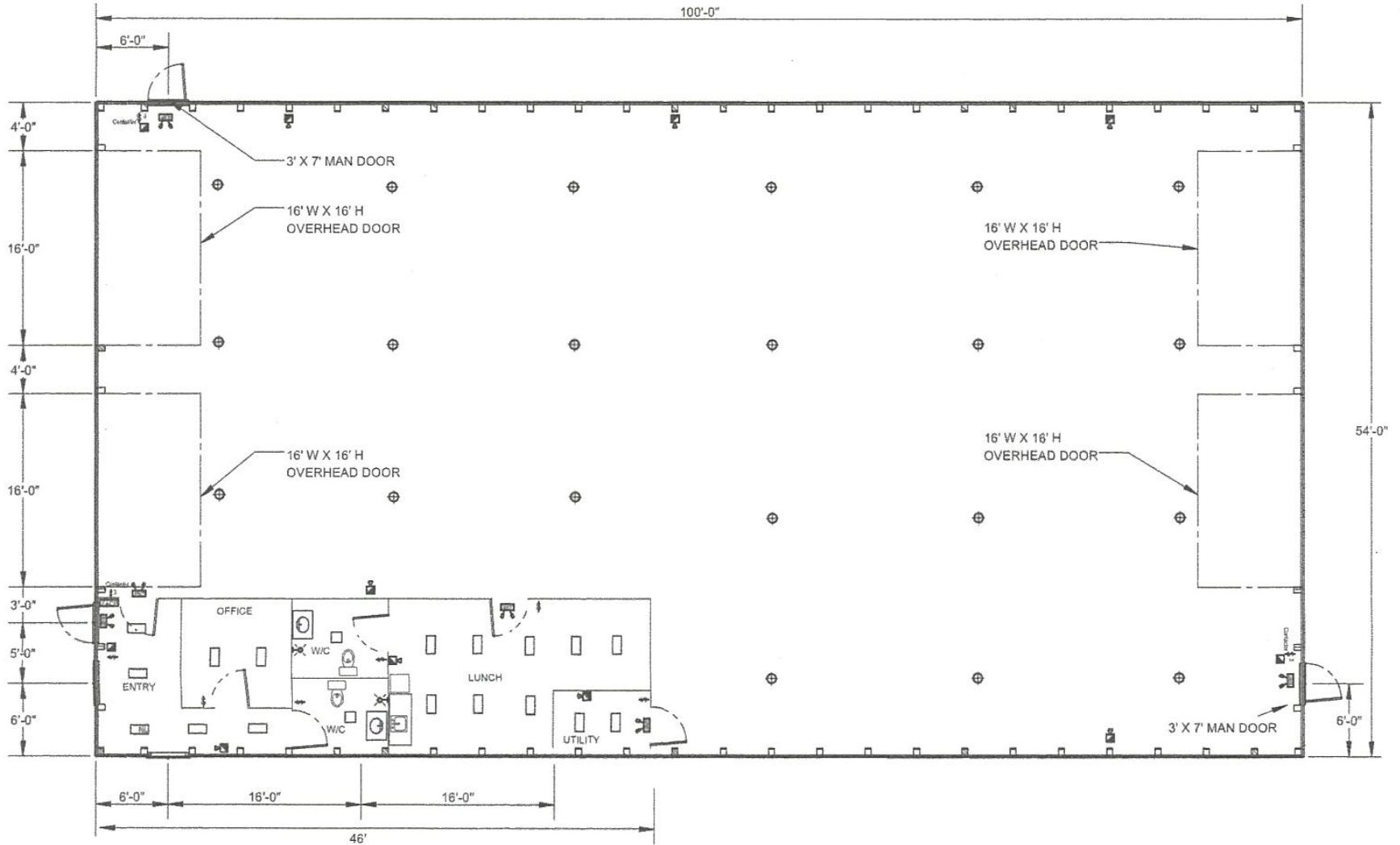
HIGHLIGHTS

- Located minutes from Portage la Prairie, just off the TransCanada Highway, and immediately adjacent to Simplot, Roquette, Enns Brothers, Catapult Environmental and more



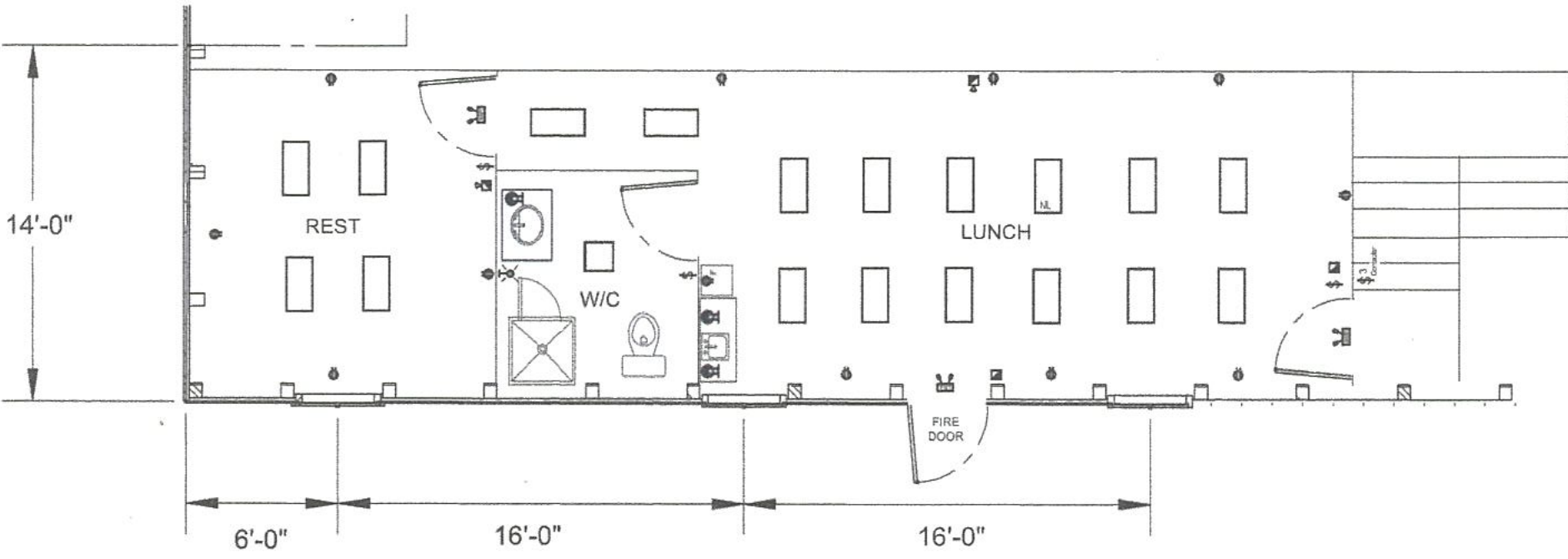
Floor Plan

MAIN FLOOR



Floor Plan

SECOND PLAN



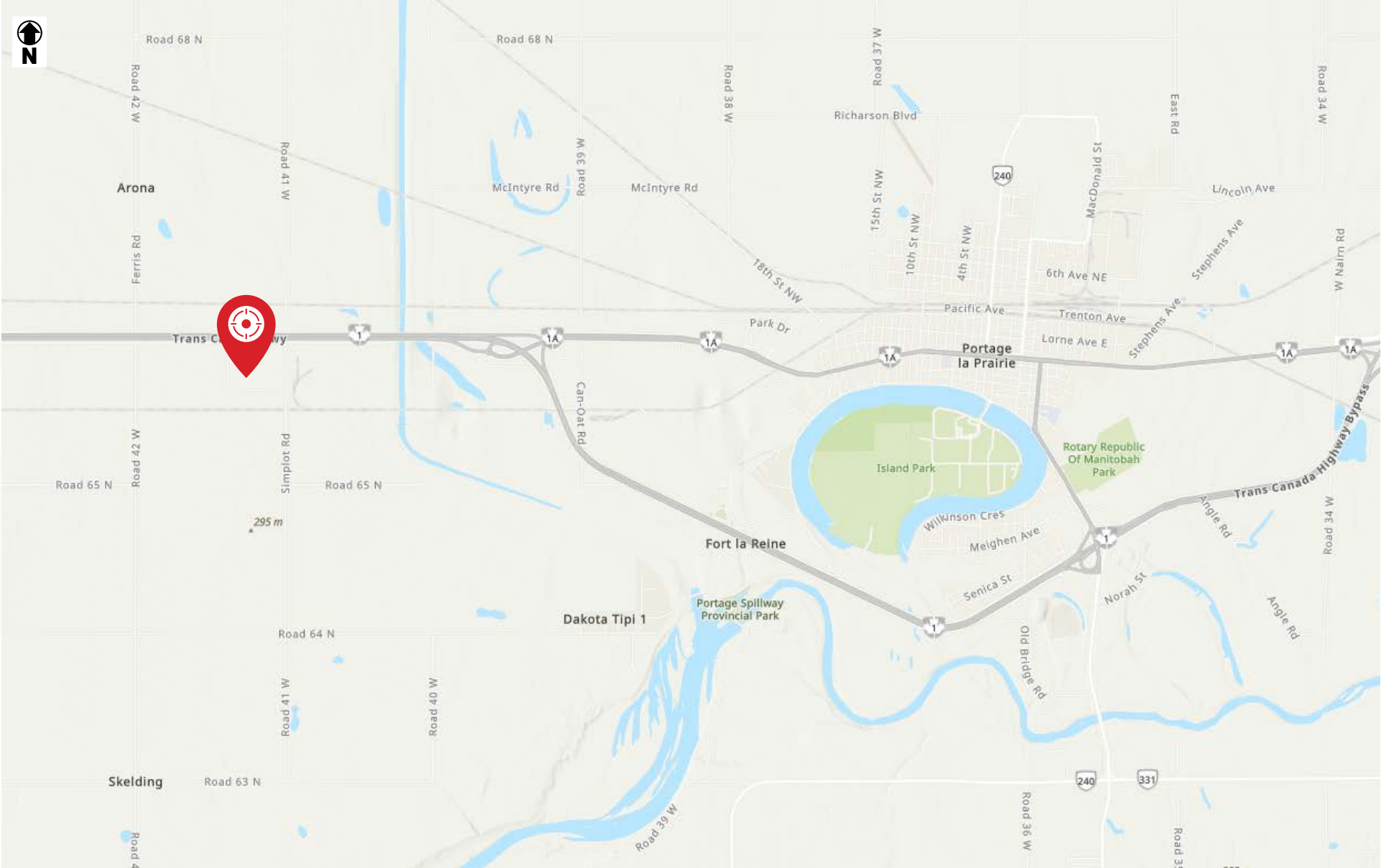
Lot Plan



Area Overview



Location Map





COMMERCIAL REAL ESTATE
SERVICES INC.

Contact

DAWSON GROENING, Advisor, Sales & Leasing
(204) 985-1383
dawson.groening@capitalgrp.ca

ERIC OTT, Associate Vice President, Sales & Leasing
(204) 985-1378
eric.ott@capitalgrp.ca

Services provided by Eric A. Ott Personal Real Estate Corporation

CAPITAL COMMERCIAL REAL ESTATE SERVICES INC.

300-570 Portage Avenue, Winnipeg, MB R3C 0G4 | T (204) 943-5700 | F (204) 956-2783 | capitalgrp.ca

Disclaimer: Capital Commercial Real Estate Services Inc. ("Capital") does not accept or assume any responsibility or liability, direct or consequential, for the information set out herein, including, without limitation, any projections, images, opinions, assumptions and estimates obtained from third parties. This information has not been verified by Capital, and Capital does not guarantee the accuracy, correctness and completeness of this information. The recipient of this information should take such steps as the recipient may deem necessary to verify the information in this document prior to placing any reliance upon it. The information may change and any property described in this document may be withdrawn from the market at any time without notice or obligation to the recipient from Capital.