

8496 Veterans Parkway

Columbus, Georgia 31909

Property Overview

2.49 acres at the corner of Turnberry and Veterans Parkway. This property has been partially graded.

Property zoned RO (residential office). Great medical or professional office site. RO also supports multi family development with density up to 43 units/acre.

Located at the entrance to Maple Ridge at Turnberry Lane, along a major transportation and growth corridor.

Offering Summary

Sale Price: \$450,000

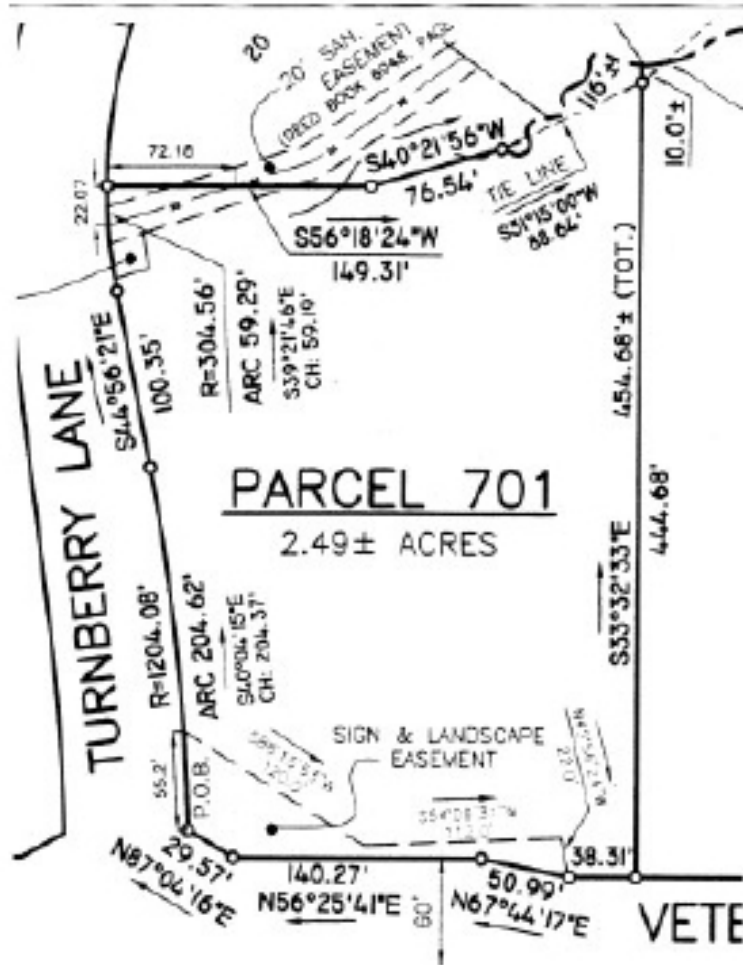
Lot Size: 2.49 Acres

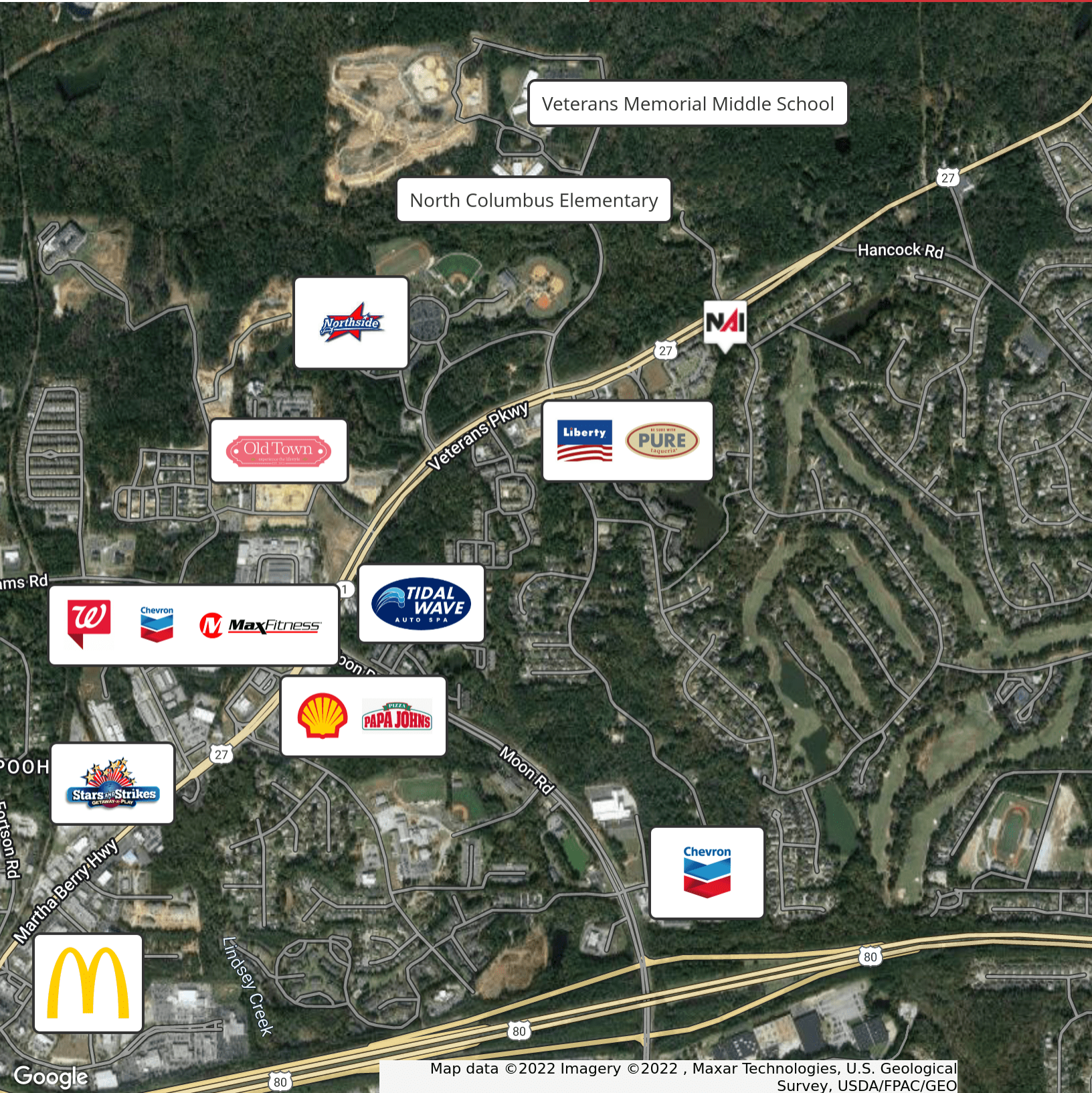
For More Information

Lakshmi Karthik

O: 706 660 5418

lkarthik@g2cre.com



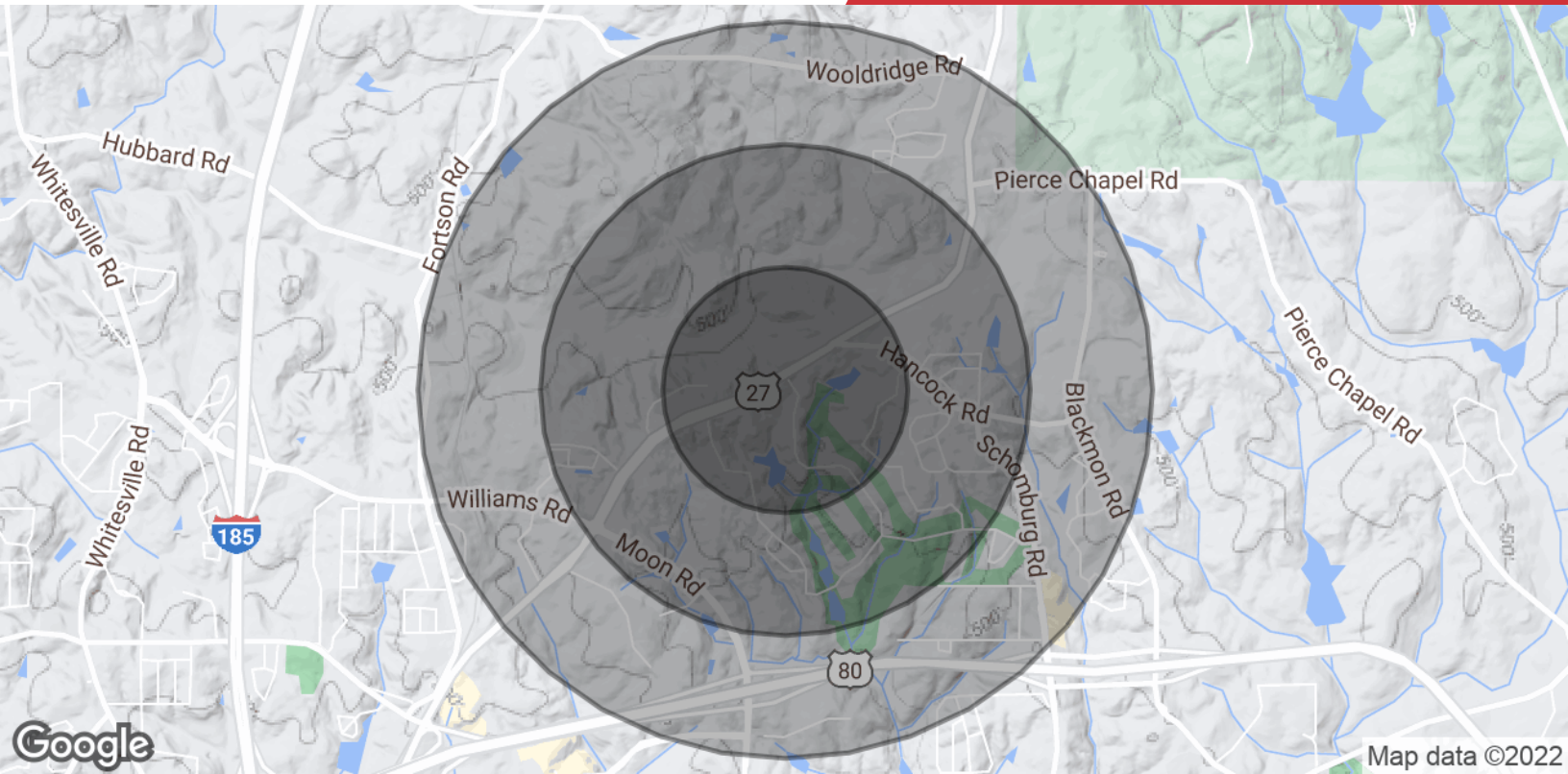


Map data ©2022 Imagery ©2022 , Maxar Technologies, U.S. Geological Survey, USDA/FPAC/GEO



We obtained the information above from sources we believe to be reliable. However, we have not verified its accuracy and make no guarantee, warranty or representation about it. It is submitted subject to the possibility of errors, omissions, change of price, rental or other conditions, prior sale, lease or financing, or withdrawal without notice. We include projections, opinions, assumptions or estimates for example only, and they may not represent current or future performance of the property. You and your tax and legal advisors should conduct your own investigation of the property and transaction.

5607 Whitesville Road
Columbus, GA 31904
706 660 5418 tel
G2cre.com



Population

| | 0.5 Miles | 1 Mile | 1.5 Miles |
|-----------------------------|-----------|--------|-----------|
| Total Population | 937 | 4,180 | 8,540 |
| Average Age | 37.4 | 35.0 | 35.9 |
| Average Age (Male) | 36.2 | 34.4 | 35.0 |
| Average Age (Female) | 36.9 | 34.8 | 37.0 |

Households & Income

| | 0.5 Miles | 1 Mile | 1.5 Miles |
|----------------------------|-----------|-----------|-----------|
| Total Households | 451 | 1,884 | 3,743 |
| # of Persons per HH | 2.1 | 2.2 | 2.3 |
| Average HH Income | \$74,005 | \$73,772 | \$75,559 |
| Average House Value | \$270,482 | \$254,789 | \$238,490 |

* Demographic data derived from 2020 ACS - US Census