

AVAILABLE

Wheeling, IL



AGENT
Peter Balyeat

PHONE
773.307.5540

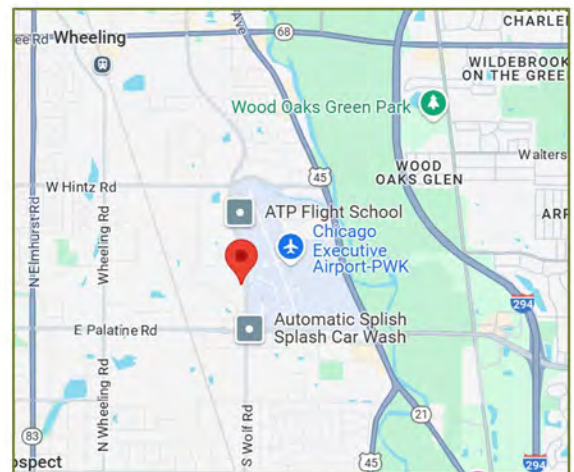
EMAIL
Peterb@
kormanleder.com

1326 Wolf Rd, Wheeling

20,013 Square Feet

Specifications

- Building Size: 20,013 SF
- Office Size: 2,500 SF
- Ceiling Height: 17'
- Loading Dock: 1 Interior Dock
- Drive-in Door: 12 x 14
- Parking: 48 Cars
- Year Built: 1985
- Power: 800 amps 480v



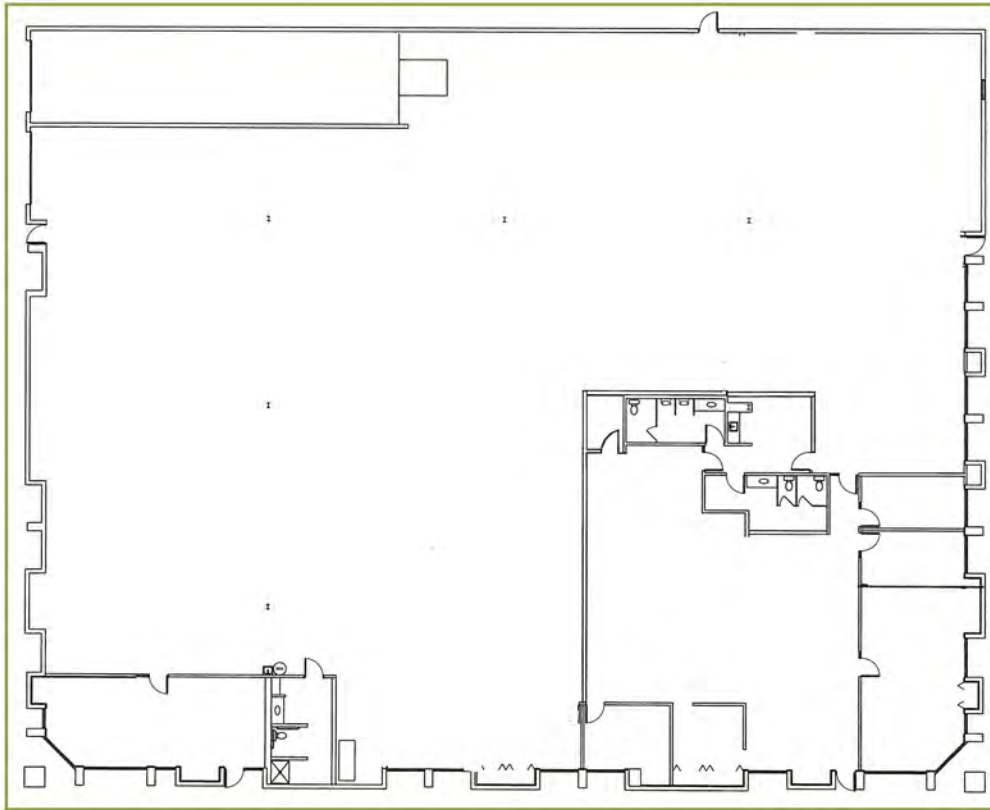
Highlights

- Immediate access to I-294
- Professionally owned and managed
- Free standing building
- Excellent street exposure

All information herein is from sources reliable but not guaranteed accurate. Subject to errors, omissions, and to change of price and terms, prior to sale or lease, all without notice.

AVAILABLE

Wheeling, IL



1326 Wolf Road

20,013 Square Feet

AGENT
Peter Balyeat

PHONE
773.307.5540

EMAIL
Peterb@
kormanleder.com

- Building Size: 20,013 SF
- Office Size: 3,000 SF
- Ceiling Height : 17'
- Loading Dock: 1 Interior Dock
- Drive-in Door: 12 x14
- Parking: 48 Cars
- Year Built: 1985
- Power: 800 amps 480v



All information herein is from sources reliable but not guaranteed accurate. Subject to errors, omissions, and to change of price and terms, prior to sale or lease, all without notice.