

40501 PRODUCTION DRIVE
HARRISON TWP., MICHIGAN

INDUSTRIAL FOR SALE
54,140 Square Feet Available



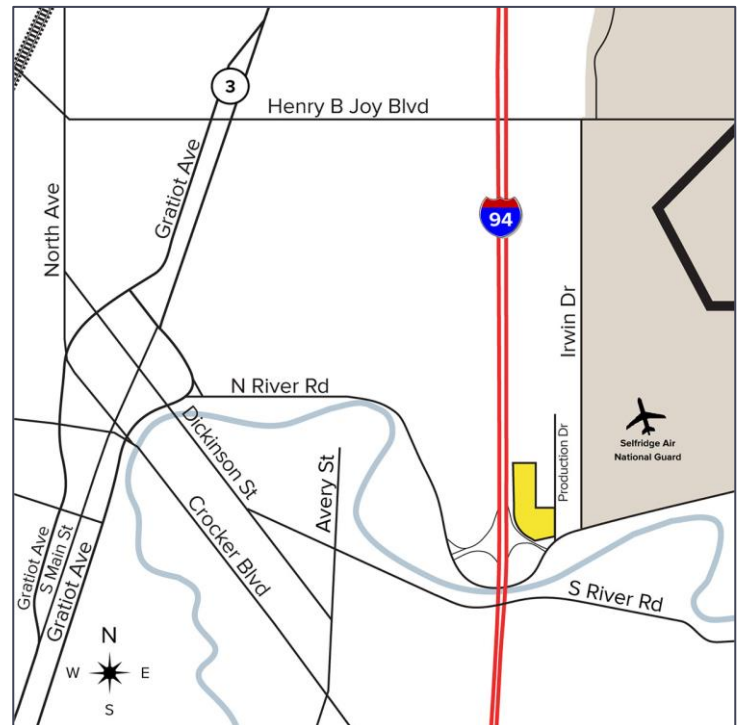
**SIGNATURE
ASSOCIATES**
KNOW SIGNATURE | KNOW RESULTS

REDEVELOPMENT OPPORTUNITY!



PROPERTY FEATURES

- 54,140 square feet available
- Situated on 13.5 acres
- Zoned Industrial
- Newly paved parking lot
- Completely remodeled interior & exterior
- Main road and freeway exposure with easy access to I-94
- Currently a sports and entertainment center
- Includes: bowling alley, softball diamonds, racquet/handball/wallyball courts, axe throwing, arcades, darts/billiards, cornhole, pins & skins, and short court basketball
- Full commercial kitchen & bar
- Sale Price: \$5,900,000 (\$108.98/sq.ft.)



For more information, please contact:

CHRIS MONSOUR
(248) 948 0107
cmonsour@signatureassociates.com

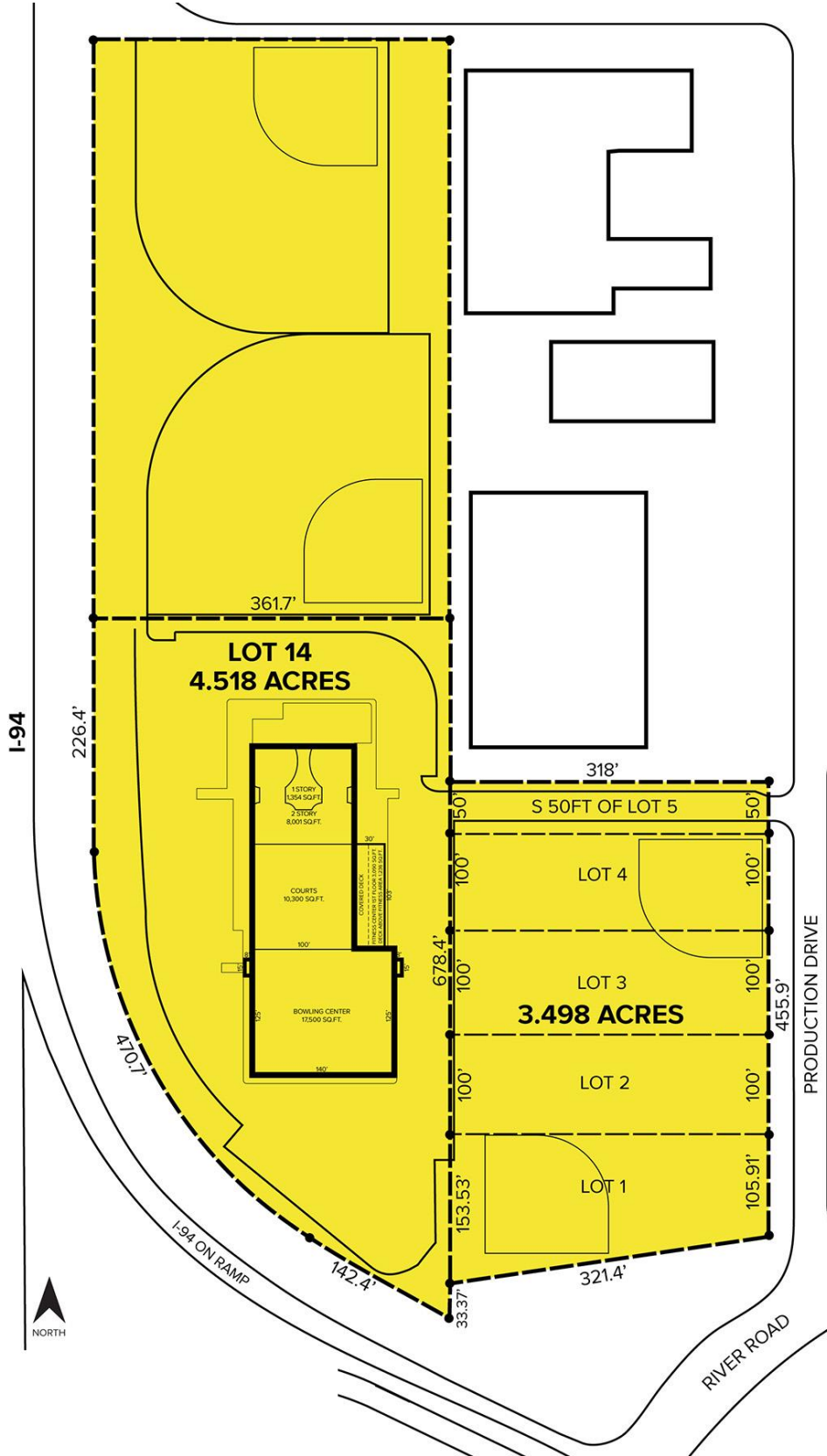
SIGNATURE ASSOCIATES
One Towne Square, Suite 1200
Southfield, MI 48076
www.signatureassociates.com

40501 Production Drive – Harrison Twp., Michigan

Industrial For Sale

54,140
Square Feet
AVAILABLE

Site Plan



For more information, please contact:

CHRIS MONSOUR
(248) 948 0107
cmonsour@signatureassociates.com

SIGNATURE ASSOCIATES
One Towne Square, Suite 1200
Southfield, MI 48076
www.signatureassociates.com

40501 Production Drive – Harrison Twp., Michigan

Industrial For Sale

54,140
Square Feet
AVAILABLE

Aerial



For more information, please contact:

CHRIS MONSOUR
(248) 948 0107
cmonsour@signatureassociates.com

SIGNATURE ASSOCIATES
One Towne Square, Suite 1200
Southfield, MI 48076
www.signatureassociates.com