

WAREHOUSE SPACE

5,700SF

FOR LEASE

**16726 W CHERRY CREEK COURT
JOLIET, ILLINOIS 60433**



Cherry Creek Business Park -5,700sf. \$9.00sf modified gross or \$4,275.00 a month. Three 16'x14' overhead doors w/openers, one drive thru bay that leads to rear yard space (76' x 42'), warehouse heat is within concrete shop floors & are complemented by a boiler and radiant tubing heat, 200 Amp 3-phase electric, main entrance has two private offices, reception area, breakroom, two handicap restrooms, mezzanine storage above office & 2nd story private office, concrete drive & parking. I-1 Zoning Unincorporated Will County

FOR ADDITIONAL INFORMATION CONTACT:

MARK E. KOENIG

(815) 546-1679 CELLULAR

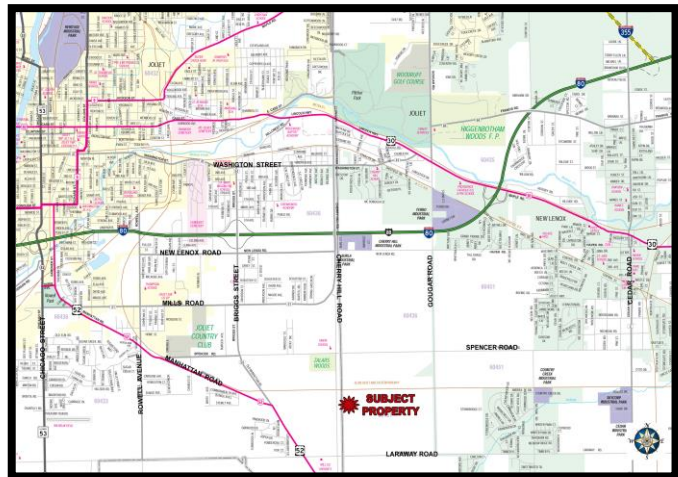
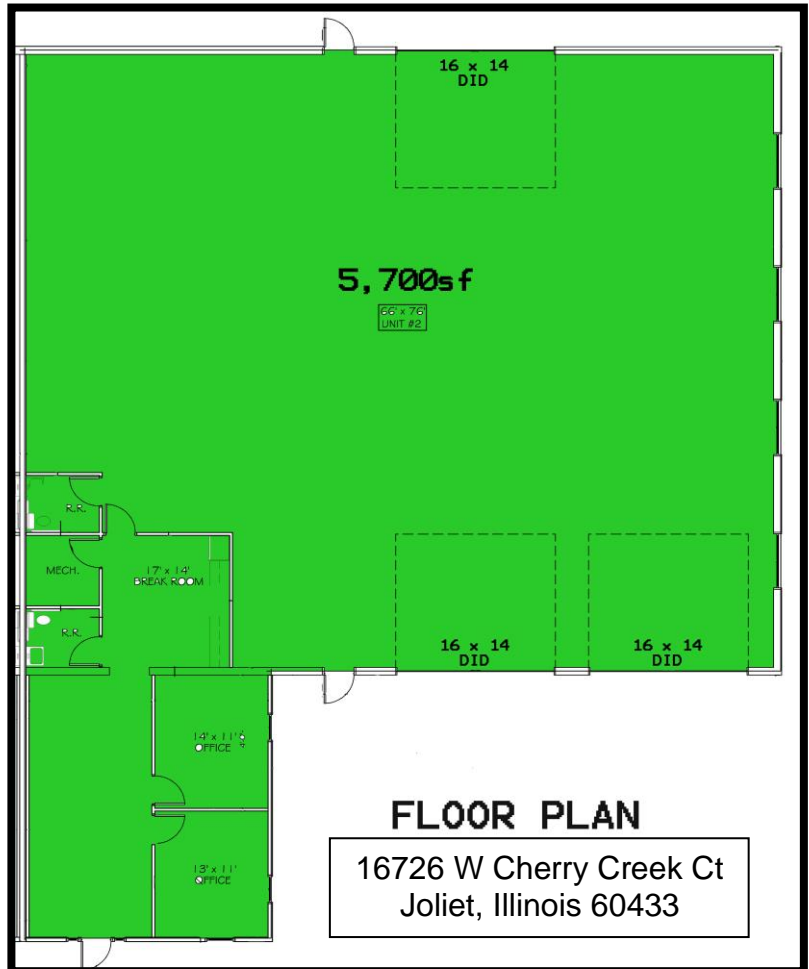
MARK@MARKEKOENIG.COM

WWW.THEKOENIGGROUPRES.COM



WAREHOUSE SPACE

5,700SF



FOR ADDITIONAL INFORMATION CONTACT:

MARK E. KOENIG

(815) 546-1679 CELLULAR

MARK@MARKEKOENIG.COM

WWW.THEKOENIGGROUPRES.COM

