



Riverfront Penthouse Suite

AVAILABLE FOR LEASE

1625 N FRONT STREET, HARRISBURG

1625 N FRONT STREET · HARRISBURG, PA 17102

OFFICE PROPERTY WITH VIEWS OF THE SUSQUEHANNA RIVER



FOR LEASE

OFFERING SUMMARY

Available SF for Lease	3,402 SF
Lease Rate	\$14.95 per SF/Yr
Lease Type	Full Service + Janitorial
Zoning	Riverfront
Municipality	City of Harrisburg
County	Dauphin County

PROPERTY OVERVIEW

Discover a rare opportunity to lease a large penthouse office suite on North Front Street in Harrisburg. This impressive space offers scenic views of the Susquehanna River and is conveniently located near downtown Harrisburg amenities and the I-81 corridor. The suite features six private perimeter offices, a spacious conference room, and secure access with an elevator and welcoming lobby. Ideal for professionals seeking both functionality and prestige, this suite is offered at an affordable rental rate—making it a compelling option for businesses looking to elevate their presence in the Capital Region.

PROPERTY HIGHLIGHTS

- Last available suite in building with elevator access
- Signage available for tenant
- Located along highly trafficked N Front Street in the heart of Downtown Harrisburg



LANDMARK COMMERCIAL REALTY

425 N 21ST STREET, SUITE 302
CAMP HILL, PA 17011

P : 717.731.1990

SEAN FITZSIMMONS

DIRECTOR, SALES & LEASING

SEAN@LandmarkCR.com

C: 717.421.6031

TREY BRAKEFIELD

ASSOCIATE

TBRAKEFIELD@LandmarkCR.com

C: 717.524.9852



LANDMARKCR.COM

1625 N FRONT STREET · HARRISBURG, PA 17102

SUSQUEHANNA RIVERFRONT PENTHOUSE SUITE

FOR LEASE



PROPERTY DETAILS

Number of Buildings	1
Building Size	± 11,000
Lot Size	0.36 Ac
Building Class	B
Tenancy	Multi
Number of Floors	3
Restrooms	In-Common
Parking	On-Site 25 spaces
Year Built	1965

BUILDING SPECIFICATIONS

Construction	Masonry
Roof Type	Flat
Lighting	LED
HVAC	Forced Air Central AC
Sprinklers	N/A
Security	Per Tenant
Signage	On-site

MARKET DETAILS

Cross Streets	N Front St & Hamilton St
Traffic Count at Intersection	14,219 ADT (N Front St)
Municipality	City of Harrisburg
County	Dauphin County
Zoning	Riverfront

LANDMARK COMMERCIAL REALTY
425 N 21ST STREET, SUITE 302
CAMP HILL, PA 17011
P : 717.731.1990

SEAN FITZSIMMONS
DIRECTOR, SALES & LEASING
SEAN@LandmarkCR.com
C: 717.421.6031

TREY BRAKEFIELD
ASSOCIATE
TBRAKEFIELD@LandmarkCR.com
C: 717.524.9852

LANDMARKCR.COM

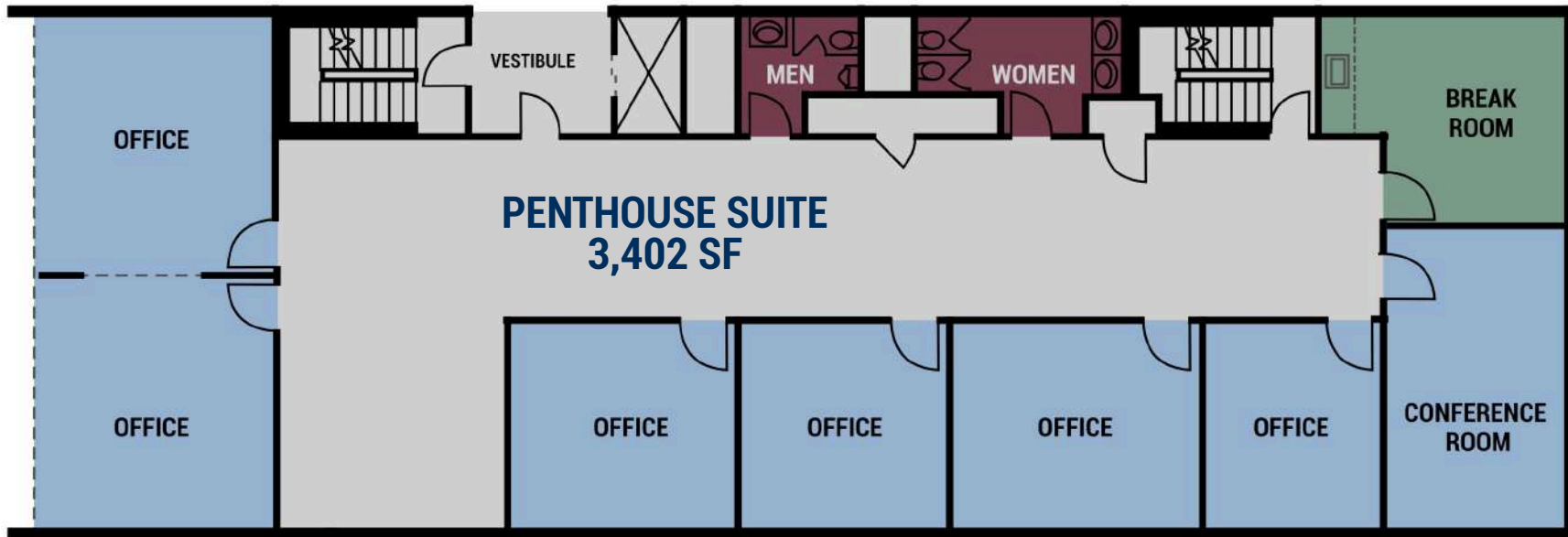


2

1625 N FRONT STREET · HARRISBURG, PA 17102

SUSQUEHANNA RIVERFRONT PENTHOUSE SUITE

FOR LEASE



SUITE	SIZE	LEASE TYPE	LEASE RATE	DESCRIPTION
Penthouse	3,402 SF	Full Service + Janitorial	\$14.95 per SF/yr	Third floor penthouse suite with elevator access. Sweeping views of the Susquehanna River Suite offers several private office spaces, en suite men's and women's restrooms as well as a breakroom



1625 N FRONT STREET · HARRISBURG, PA 17102

SUSQUEHANNA RIVERFRONT PENTHOUSE SUITE

FOR LEASE

LOCATION

**SYLVIA H. RAMBO
UNITED STATES
COURTHOUSE**



**PA STATE
CAPITOL COMPLEX**

N FRONT STREET

SUSQUEHANNA RIVER

LANDMARK COMMERCIAL REALTY

425 N 21ST STREET, SUITE 302
CAMP HILL, PA 17011

P : 717.731.1990

SEAN FITZSIMMONS

DIRECTOR, SALES & LEASING

SEAN@LandmarkCR.com

C : 717.421.6031

TREY BRAKEFIELD

ASSOCIATE

TBRAKEFIELD@LandmarkCR.com

C : 717.524.9852



LANDMARKCR.COM

1625 N FRONT STREET · HARRISBURG, PA 17102

SUSQUEHANNA RIVERFRONT PENTHOUSE SUITE

FOR LEASE

AREA



LANDMARK COMMERCIAL REALTY

425 N 21ST STREET, SUITE 302
CAMP HILL, PA 17011

P : 717.731.1990

SEAN FITZSIMMONS

DIRECTOR, SALES & LEASING

SEAN@LandmarkCR.com

C : 717.421.6031

TREY BRAKEFIELD

ASSOCIATE

TBRAKEFIELD@LandmarkCR.com

C : 717.524.9852

LANDMARKCR.COM

TCN
WORLDWIDE
REAL ESTATE SERVICES

5



1625 N FRONT STREET · HARRISBURG, PA 17102
SUSQUEHANNA RIVERFRONT
PENTHOUSE SUITE

FOR LEASE

DEMOGRAPHICS

POPULATION

1 MILE	16,122
2 MILE	98,696
3 MILE	203,216

HOUSEHOLDS

1 MILE	8,174
2 MILE	42,372
3 MILE	85,380

AVERAGE HOUSEHOLD INCOME

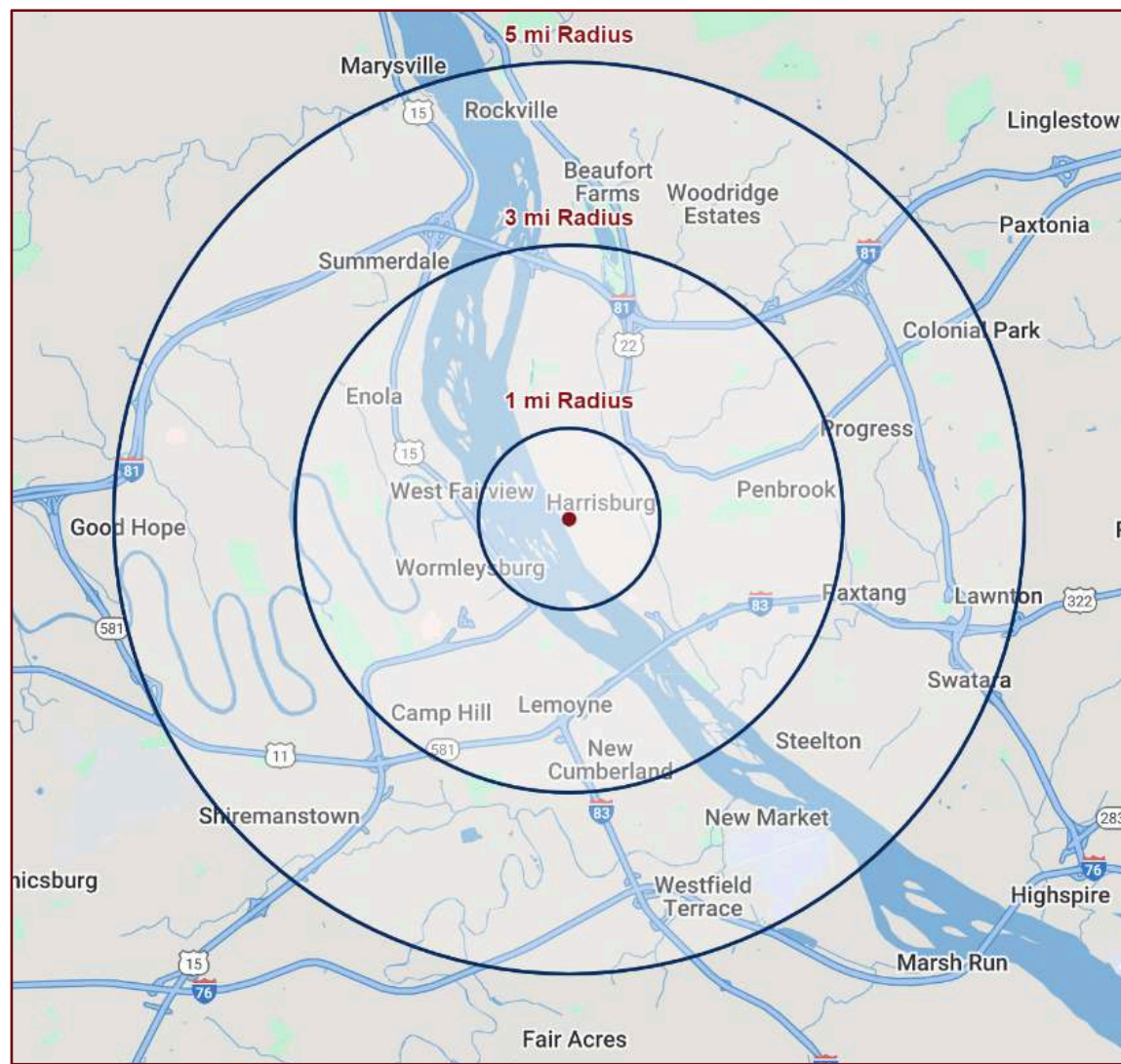
1 MILE	\$73,906
2 MILE	\$85,932
3 MILE	\$98,200

TOTAL BUSINESSES

1 MILE	1,470
2 MILE	4,839
3 MILE	9,173

TOTAL EMPLOYEES (DAYTIME POPULATION)

1 MILE	35,600
2 MILE	84,264
3 MILE	140,608





1625 N FRONT STREET · HARRISBURG, PA 17102

SUSQUEHANNA RIVERFRONT PENTHOUSE SUITE

FOR LEASE

AREA OVERVIEW

Nestled within the heart of Dauphin County, **HARRISBURG**, the Capital City, serves as a vibrant urban center. As a hub for culture, business, and government, Harrisburg has been the county seat since 1785 and Pennsylvania's capital since 1812. The city's picturesque location along the Susquehanna River and its backdrop of the Blue Ridge Mountains combines big city influence and sophistication with small-town charm. The impressive Capitol dome dominates the skyline, making it an iconic architectural landmark.

Harrisburg's strategic location offers easy access to major metropolitan areas, including Baltimore, Philadelphia, and Washington, D.C., all within a 90-minute to 2-hour drive. For those seeking the excitement of New York City, Harrisburg provides a direct three-hour train ride. Additionally, Harrisburg International Airport offers convenient travel options, many of which are direct flights to various destinations, enhancing accessibility for both residents and businesses.



HARRISBURG DEMOGRAPHICS



POPULATION

50,730



HOUSEHOLDS

21,818



AVG HH INCOME

\$66,864



MEDIAN AGE

32.0



BUSINESSES

2,538



EMPLOYEES

52,337

LANDMARK COMMERCIAL REALTY

425 N 21ST STREET, SUITE 302
CAMP HILL, PA 17011

P: 717.731.1990

SEAN FITZSIMMONS

DIRECTOR, SALES & LEASING

SEAN@LandmarkCR.com

C: 717.421.6031

TREY BRAKEFIELD

ASSOCIATE

TBRAKEFIELD@LandmarkCR.com

C: 717.524.9852

LANDMARKCR.COM

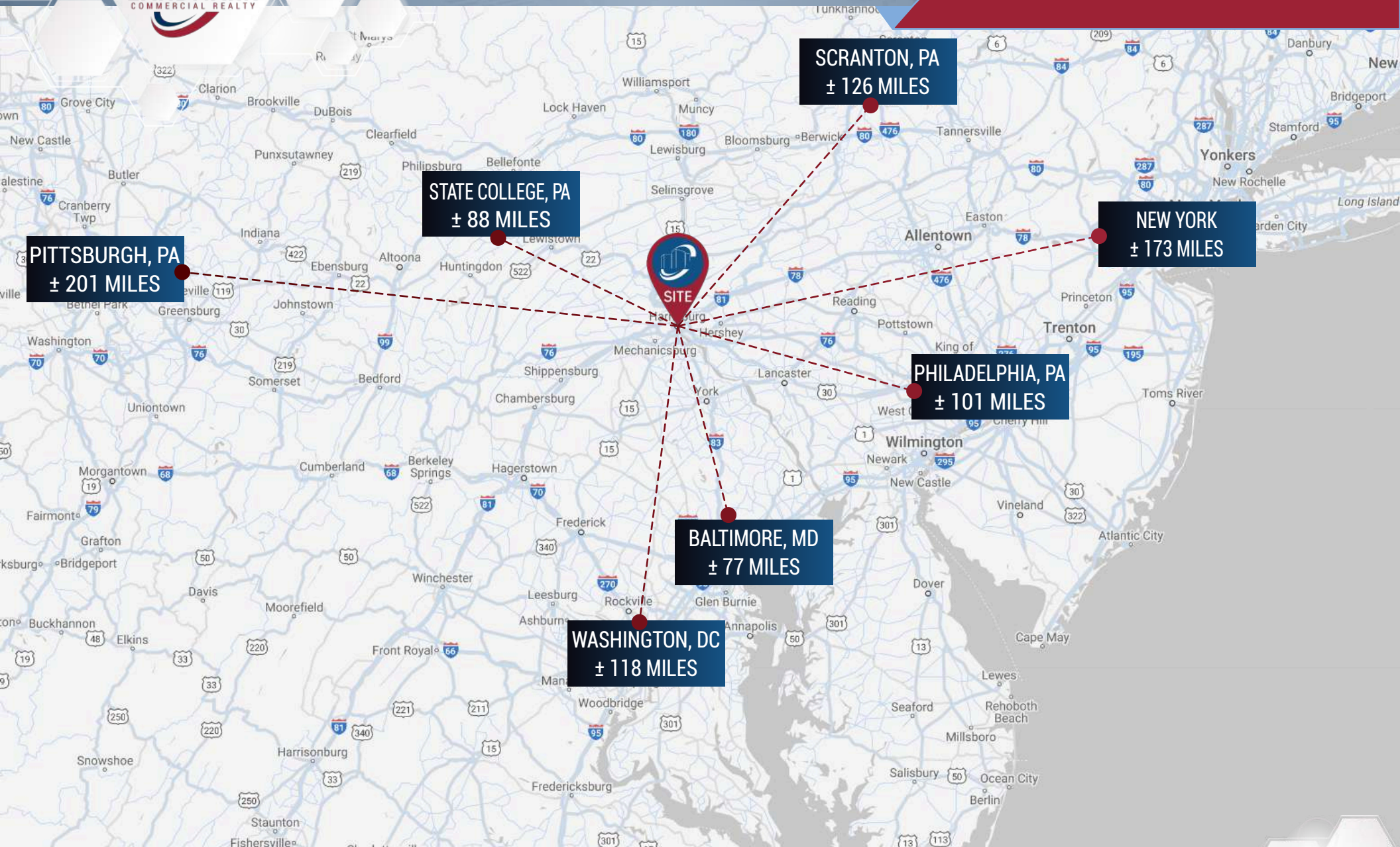
TCN
WORLDWIDE
REAL ESTATE SERVICES

7

1625 N FRONT STREET · HARRISBURG, PA 17102

SUSQUEHANNA RIVERFRONT PENTHOUSE SUITE

FOR LEASE



LANDMARK COMMERCIAL REALTY

425 N 21ST STREET, SUITE 302
CAMP HILL, PA 17011

P : 717.731.1990

SEAN FITZSIMMONS

DIRECTOR, SALES & LEASING

SEAN@LandmarkCR.com

C: 717.421.6031

TREY BRAKEFIELD

ASSOCIATE

TBRAKEFIELD@LandmarkCR.com

C: 717.524.9852



LANDMARKCR.COM



CONFIDENTIALITY & DISCLAIMER

All materials and information received or derived from Landmark Commercial its directors, officers, agents, advisors, affiliates and/or any third party sources are provided without representation or warranty as to completeness, veracity, or accuracy, condition of the property, compliance or lack of compliance with applicable governmental requirements, developability or suitability, financial performance of the property, projected financial performance of the property for any party's intended use or any and all other matters.

Neither Landmark Commercial its directors, officers, agents, advisors, or affiliates makes any representation or warranty, express or implied, as to accuracy or completeness of the any materials or information provided, derived, or received. materials and information from any source, whether written or verbal, that may be furnished for review are not a substitute for a party's active conduct of its own due diligence to determine these and other matters of significance to such party. Landmark Commercial will not investigate or verify any such matters or conduct due diligence for a party unless otherwise agreed in writing.

EACH PARTY SHALL CONDUCT ITS OWN INDEPENDENT INVESTIGATION AND DUE DILIGENCE.

Any party contemplating or under contract or in escrow for a transaction is urged to verify all information and to conduct their own inspections and investigations including through appropriate third party independent professionals selected by such party. All financial data should be verified by the party including by obtaining and reading applicable documents and reports and consulting appropriate independent professionals. Landmark Commercial makes no warranties and/or representations regarding the veracity, completeness, or relevance of any financial data or assumptions. Landmark Commercial does not serve as a financial advisor to any party regarding any proposed transaction. All data and assumptions regarding financial performance, including that used for financial modeling purposes, may differ from actual data or performance. Any estimates of market rents and/or projected rents that may be provided to a party do not necessarily mean that rents can be established at or increased to that level. Parties must have evaluate any applicable contractual and governmental limitations as well as market conditions, vacancy factors and other issues in order to determine rents from or for the property.

Legal questions should be discussed by the party with an attorney. Tax questions should be discussed by the party with a certified public accountant or tax attorney. Title questions should be discussed by the party with a title officer or attorney. Questions regarding the condition of the property and whether the property complies with applicable governmental requirements should be discussed by the party with appropriate engineers, architects, contractors, other consultants and governmental agencies. All properties and services are marketed by Landmark Commercial in compliance with all applicable fair housing and equal opportunity laws.