

Office | For Lease

CBRE

# 1347 Kapiolani Boulevard

1347 Kapiolani Blvd  
Honolulu, HI 96814  
[www.cbre.com/hawaii](http://www.cbre.com/hawaii)

Office Space Available





Offering Summary

Located in the heart of Kapiolani next to Ala Moana Center, shops and banks. Easy access and ample parking with several bus lines nearby.

Property:	1347 Kapiolani Boulevard Honolulu, Hawaii 96814
TMK:	(1) 2-3-9: Parcel 16
Term:	3 - 10 Years
Available:	3,782 RSF
Base Rent (NNN):	Office: \$1.35/SF/Month
CAM:	Office: \$1.54/SF/Month
Parking:	\$95+GET/Stall/Month Free Customer Parking
A/C Hours:	Mon. - Sat. 7:30 a.m. to 8:00 p.m. Sun. 10:00 a.m. to 6:00 p.m.

The Highlights

- + Great location in the middle of the Kapiolani Corridor
- + Ala Moana Center within walking distance
- + Major thoroughfares around the area including central bus lines
- + Building improvement recently completed



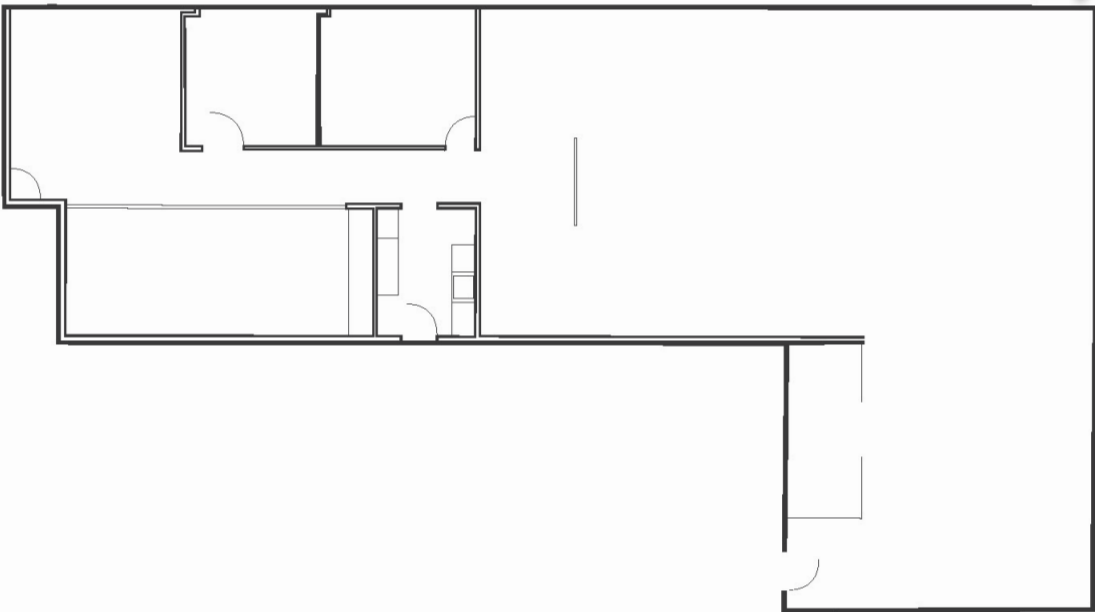
Available Units

Suite	Size (SF)	Use	Description
401	3,782	Office	Three offices, conference room, open area with operable windows



Floor Plan

Suite 401



CLICK HERE  
FOR VIRTUAL  
TOUR



1347 Kapiolani Boulevard  
Honolulu, HI 96814

For Lease



## Photo Gallery



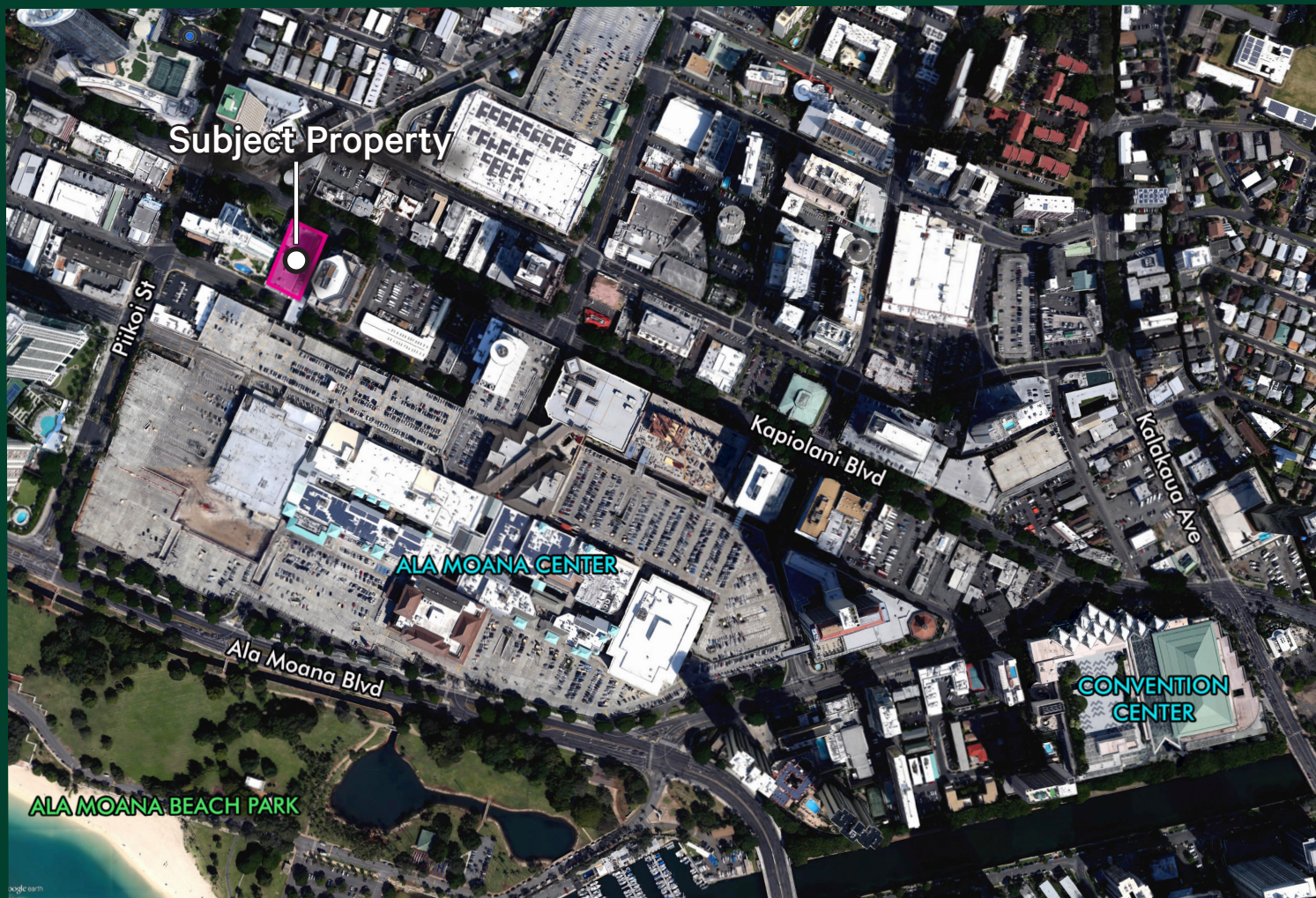


1347 Kapiolani Boulevard  
Honolulu, HI 96814

For Lease



## Location Map



## Contact Us

### Andrew D. Reenders (B)

Vice President

+1 808 541 5146

[andrew.reenders@cbre.com](mailto:andrew.reenders@cbre.com)

Lic. RB-21784

### Eric Huaiyu Zheng (S)

Associate

+1 808 541 5113

[eric.zheng2@cbre.com](mailto:eric.zheng2@cbre.com)

Lic. RS-85703

© 2025 CBRE, Inc. All rights reserved. This information has been obtained from sources believed reliable, but has not been verified for accuracy or completeness. You should conduct a careful, independent investigation of the property and verify all information. Any reliance on this information is solely at your own risk. CBRE and the CBRE logo are service marks of CBRE, Inc. All other marks displayed on this document are the property of their respective owners, and the use of such logos does not imply any affiliation with or endorsement of CBRE. Photos herein are the property of their respective owners. Use of these images without the express written consent of the owner is prohibited.

AR:NAS\_OF46\_1347Kapiolani\_04.11.25

[www.cbre.com/hawaii](http://www.cbre.com/hawaii)

**CBRE**