



**SAVAG**

**PRIOR LAKE**

**SITE**

**PRIOR LAKE, MN**

# 0.9 ACRE RETAIL SITE

**BEN DREW**  
Senior Associate  
+1 952 837 8553  
ben.drew@cushwake.com



# FISH POINT RD SE PRIOR LAKE, MN

## Property Highlights

- Commercial development land adjacent to Kwik Trip, KinderCare, and Culver's
- Utilities to site
- 15,000+ vehicles per day on Eagle Creek Avenue

## Property Information

Gross Acres	0.9
PID #	255130010
Taxes	\$8,156
Zoning	C-2 General Business
2040 Guided Land Use	C-CC Community Retail Shopping

## Demographics (2023)

	1 Mile	3 Miles	5 Miles
Population	7,323	35,273	73,582
Households	2,992	12,879	25,775
Average HH Income	\$134,366	\$162,775	\$167,843
Daytime Population	3,480	7,104	30,012

## TRAFFIC COUNTS

Credit River Rd SE - 1,300 vpd  
Fish Point Rd SE - 6,095 vpd



# FISH POINT RD SE PRIOR LAKE, MN

AERIAL

PID: 255130010  
0.9 Acres

**Kwik  
TRIP**

**Culver's**  
RESTAURANTS &  
PIZZERIA COUNTRY

**SuiteLiving**  
SENIOR CARE

**KinderCare**  
LEARNING CENTERS

**MIRATECH**

**Prior Lake  
Fire  
Department**

**Prior Lake  
Baptist Church**

Industrial Cir SE



# FISH POINT RD SE PRIOR LAKE, MN

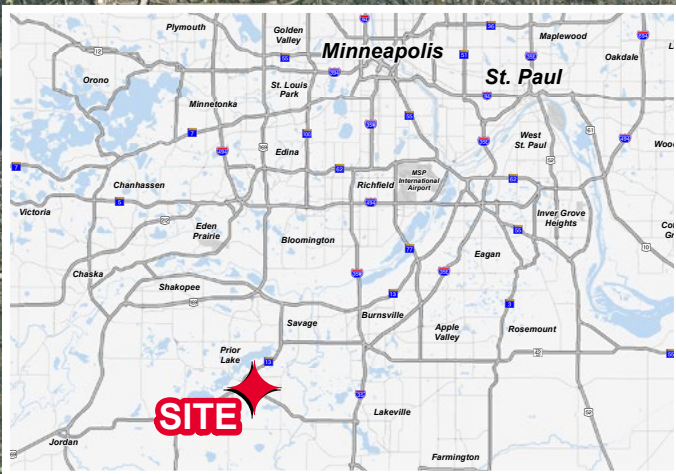
AERIAL



# FISH POINT RD SE

## PRIOR LAKE, MN

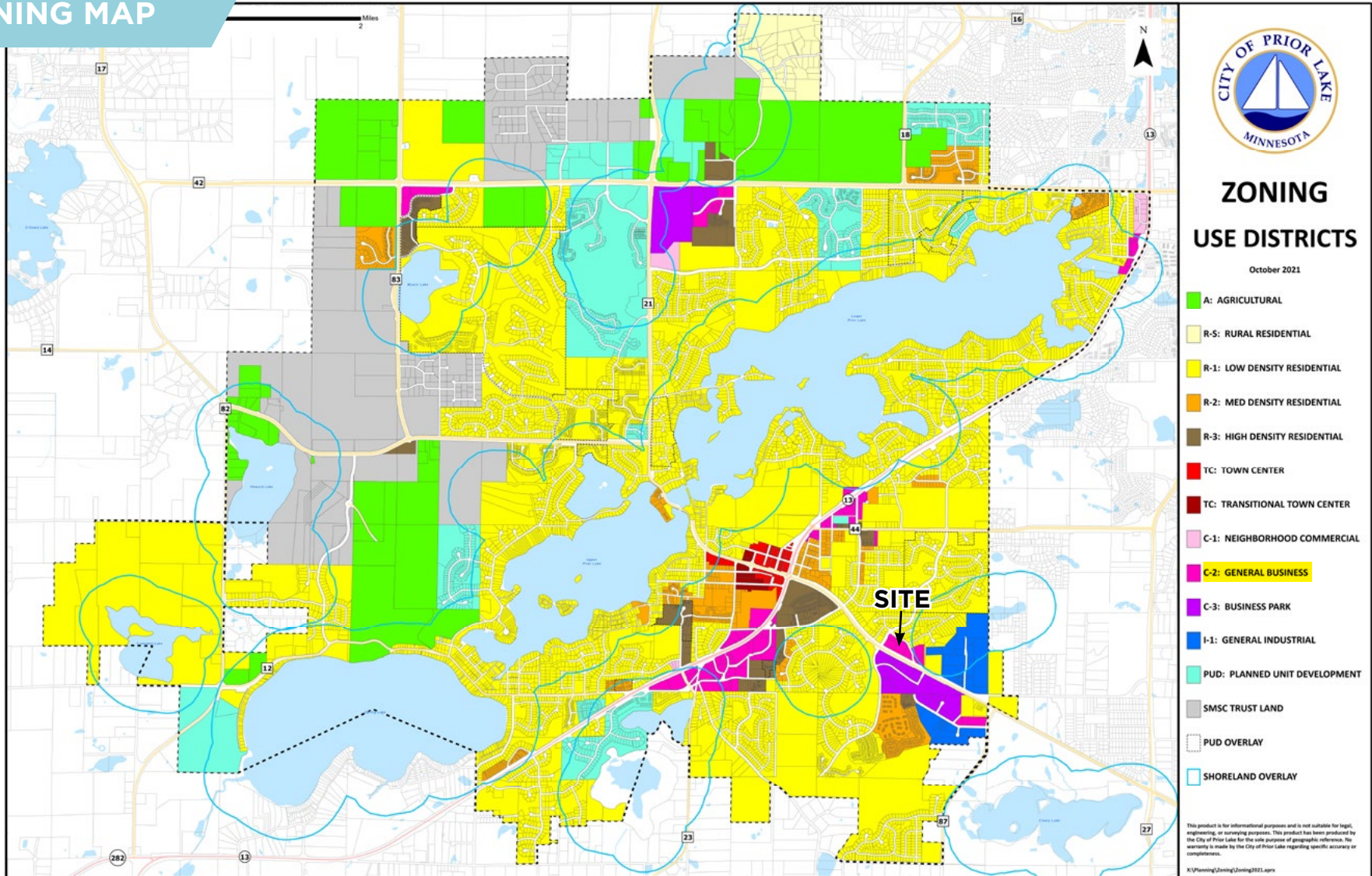
AERIAL



# FISH POINT RD SE

## PRIOR LAKE, MN

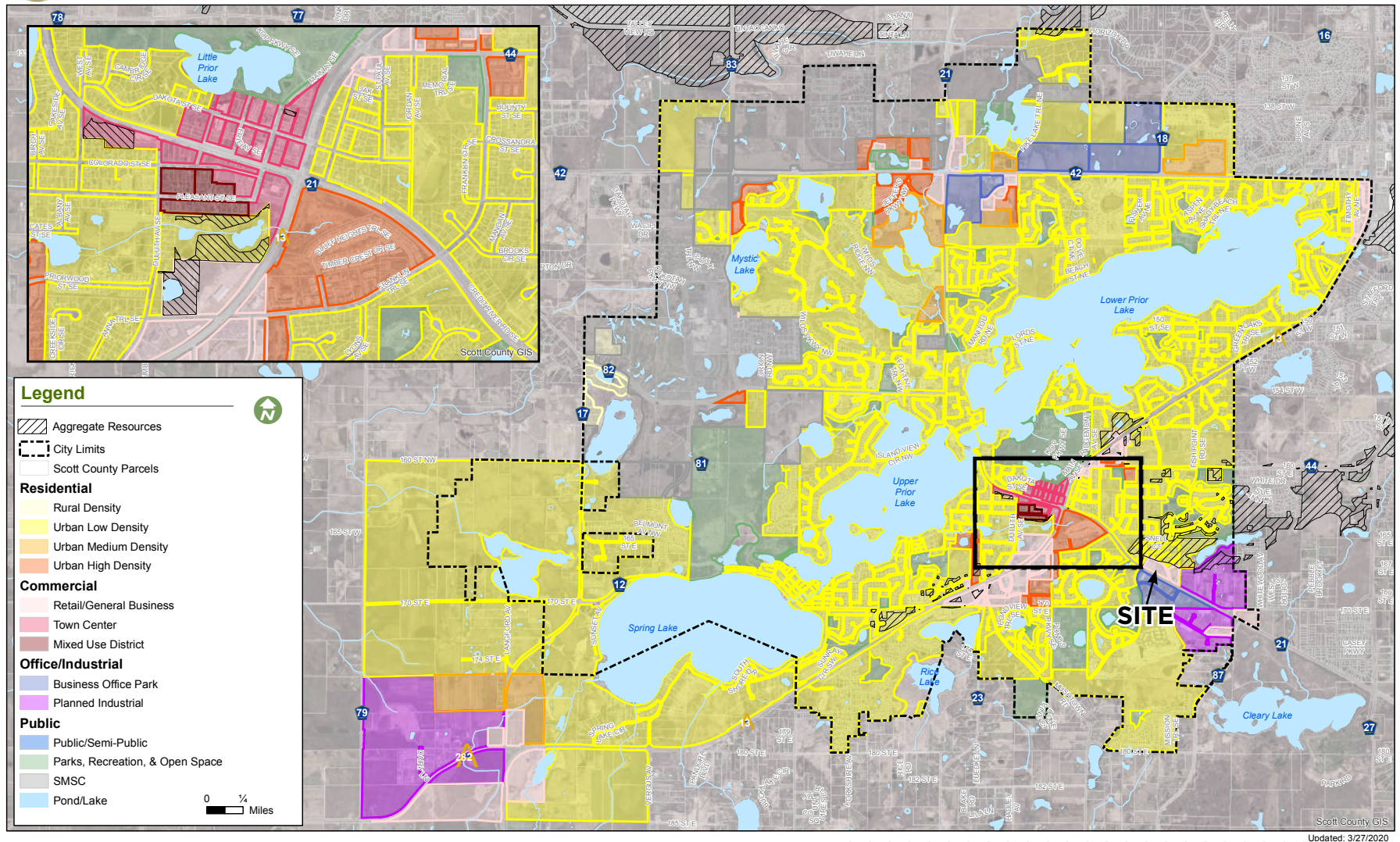
### ZONING MAP



[CLICK ON MAP FOR PRINTABLE IMAGE](#)

# FISH POINT RD SE PRIOR LAKE, MN

## LAND USE PLAN



[CLICK ON MAP FOR PRINTABLE IMAGE](#)



**FOR MORE INFORMATION, CONTACT:**

**BEN DREW**  
Senior Associate  
+1 952 837 8553  
ben.drew@cushwake.com

©2024 Cushman & Wakefield. All rights reserved. The material in this presentation has been prepared solely for information purposes, and is strictly confidential. Any disclosure, use, copying or circulation of this presentation (or the information contained within it) is strictly prohibited, unless you have obtained Cushman & Wakefield's prior written consent. The views expressed in this presentation are the views of the author and do not necessarily reflect the views of Cushman & Wakefield. Neither this presentation nor any part of it shall form the basis of, or be relied upon in connection with any offer, or act as an inducement to enter into any contract or commitment whatsoever. NO REPRESENTATION OR WARRANTY IS GIVEN, EXPRESS OR IMPLIED, AS TO THE ACCURACY OF THE INFORMATION CONTAINED WITHIN THIS PRESENTATION, AND CUSHMAN & WAKEFIELD IS UNDER NO OBLIGATION TO SUBSEQUENTLY CORRECT IT IN THE EVENT OF ERRORS.

