

UP TO 187 ACRES ON LAKE DAVIDSON

LANGTREE EAST



- Direct access off of I-77 exit 31 and Langtree Rd.
 - Over 3 miles of shoreline on Lake Davidson
- Across the street from Lowe's World Headquarters
 - Main infrastructure currently under construction
- Across the cove from Ingersoll Rand's North American Headquarters
 - Main infrastructure currently under construction
- Zoned Village Center, Neighborhood Mixed Use and Village Center
- Existing access from Transco Rd., future from East/West Connector

Brian Long
RL WEST
(704) 928-7227 (c)
(704) 997-2630 (o)
blong@rlwest.com



RL WEST

COMMERCIAL BROKERAGE DIVISION

UP TO 187 ACRES ON LAKE DAVIDSON

LANGTREE EAST



Brian Long
RL WEST
(704) 928-7227 (c)
(704) 997-2630 (o)
blong@rlwest.com

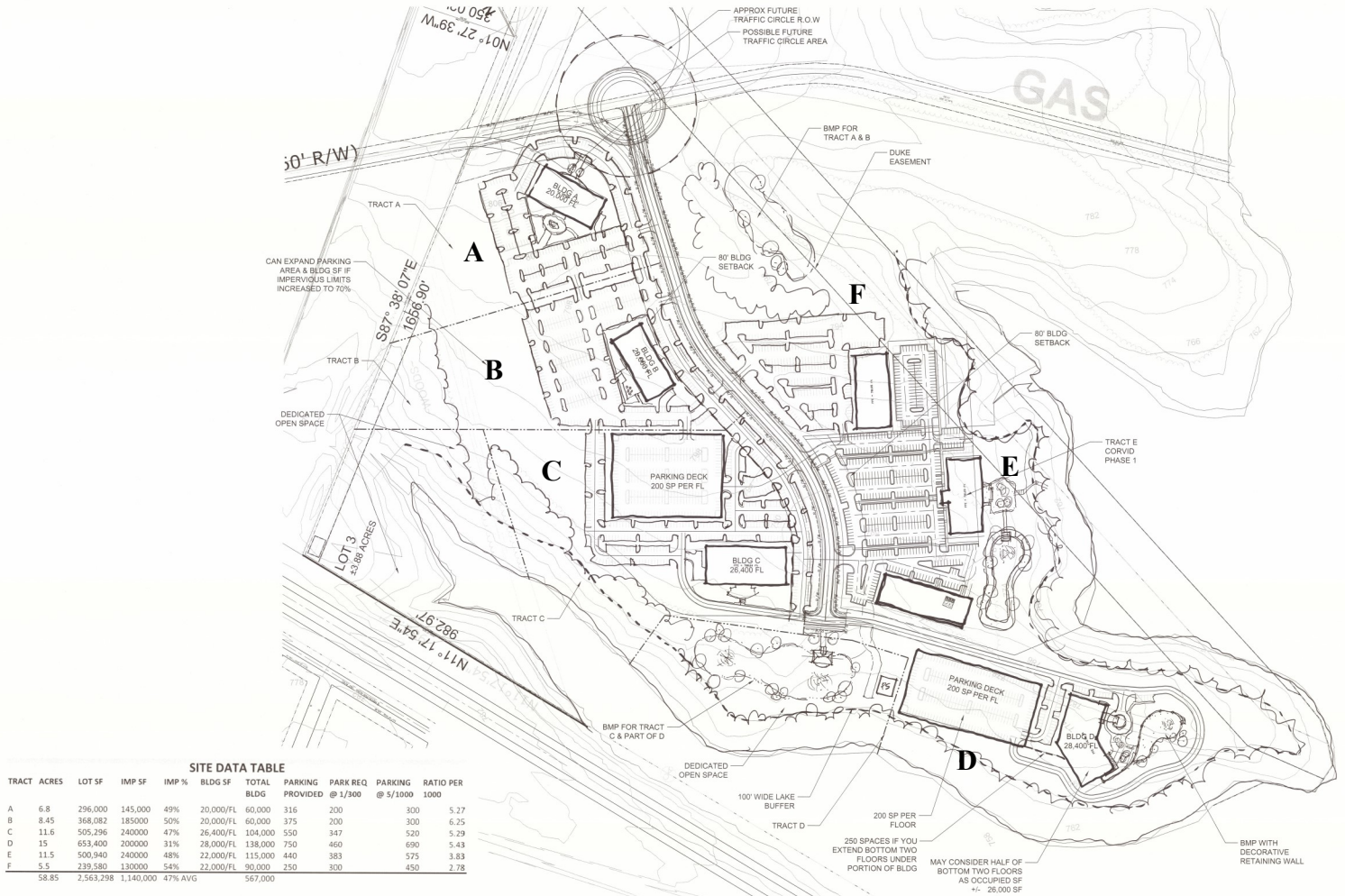


RL WEST

COMMERCIAL BROKERAGE DIVISION

UP TO 187 ACRES ON LAKE DAVIDSON

LANGTREE EAST



| <u>PARCEL</u> | <u>ACRES</u> | <u>POTENTIAL BUILDING SIZE</u> | <u>PARKING SHOWN</u> | <u>PRICE</u> |
|---------------|--------------|--------------------------------|----------------------|------------------|
| A | 6.8 | 60,000 SQUARE FEET | 316 SPACES | Call for pricing |
| B | 8.45 | 60,000 SQUARE FEET | 375 SPACES | Call for pricing |
| C | 11.6 | 104,000 SQUARE FEET | 550 SPACES | Call for pricing |
| D | 15 | 138,000 SQUARE FEET | 750 SPACES | Call for pricing |
| E | 11.5 | 115,000 SQUARE FEET | 440 SPACES | *SOLD |
| F | 5.5 | 90,000 SQUARE FEET | 250 SPACES | *UNDER CONTRACT |

Brian Long
RL WEST
(704) 928-7227 (c)
(704) 997-2630 (o)
blong@rlwest.com



RL WEST
COMMERCIAL BROKERAGE DIVISION