

# FOR LEASE

201 Hansen Court Wood Dale, Illinois

12,247 SF

## Property Features



61,700 SF building size



5.0 acres total site size



3.2 / 1,000 car parking ratio



14' clear height



30' x 30' column spacing



Owned By

**mapleiree**

**Lauren Lee**  
Mapletree Investments  
562 477 5100  
lauren.lee@mapetree.com.sg

Leased By

 **CUSHMAN & WAKEFIELD**

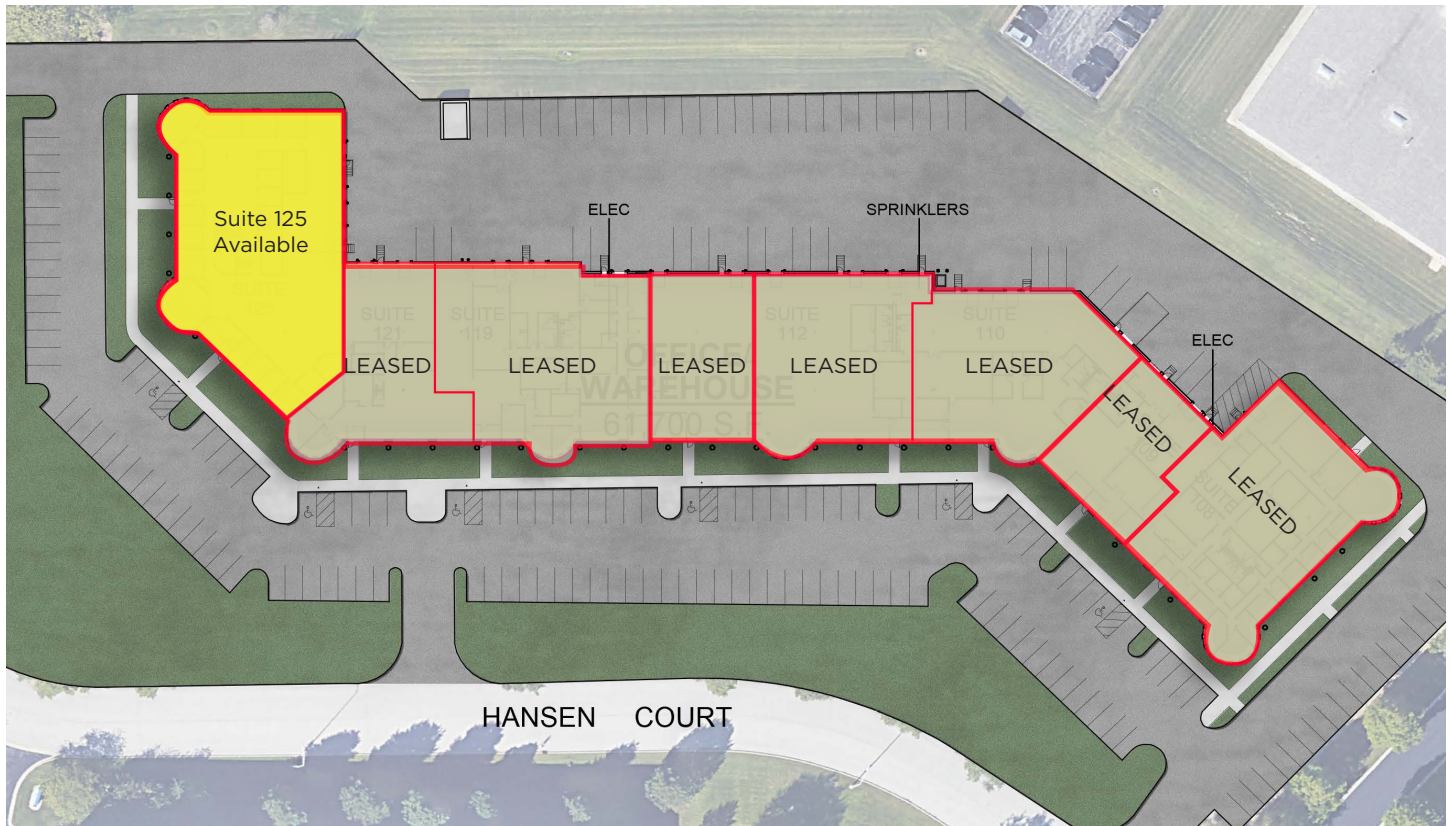
**Jeff Matella**  
Director  
847 720 1349  
jeff.matella@cushwake.com

**Michael Labek**  
Senior Associate  
312 470 2309  
michael.labek@cushwake.com



# 201 HANSEN COURT, WOOD DALE

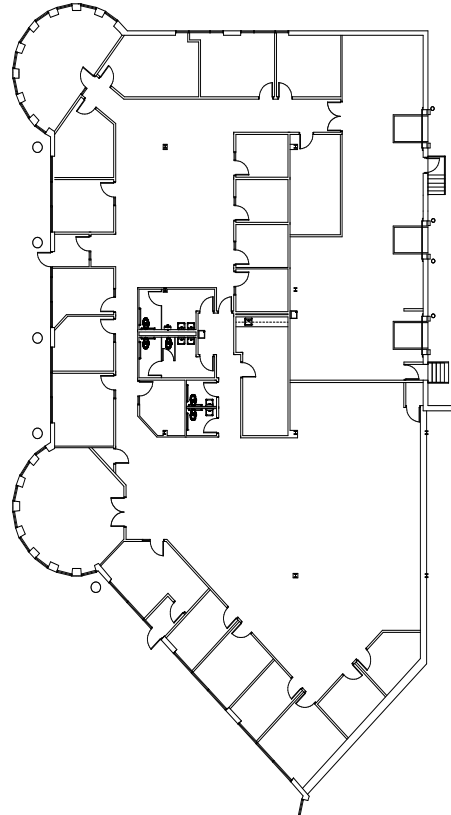
## SITE PLAN



### Currently Available

#### Suite 125

- >>> 12,247 SF available
- >>> 10,434 SF office (can reduce)
- >>> 1,813 SF warehouse
- >>> 3 loading docks
- >>> 700 Amps of 120/208V 3 Phase
- >>> Taxes: \$3.85 PSF  
CAM: \$2.87 PSF  
Insuranc: \$0.20 PSF



Owned By

**mapleiree**

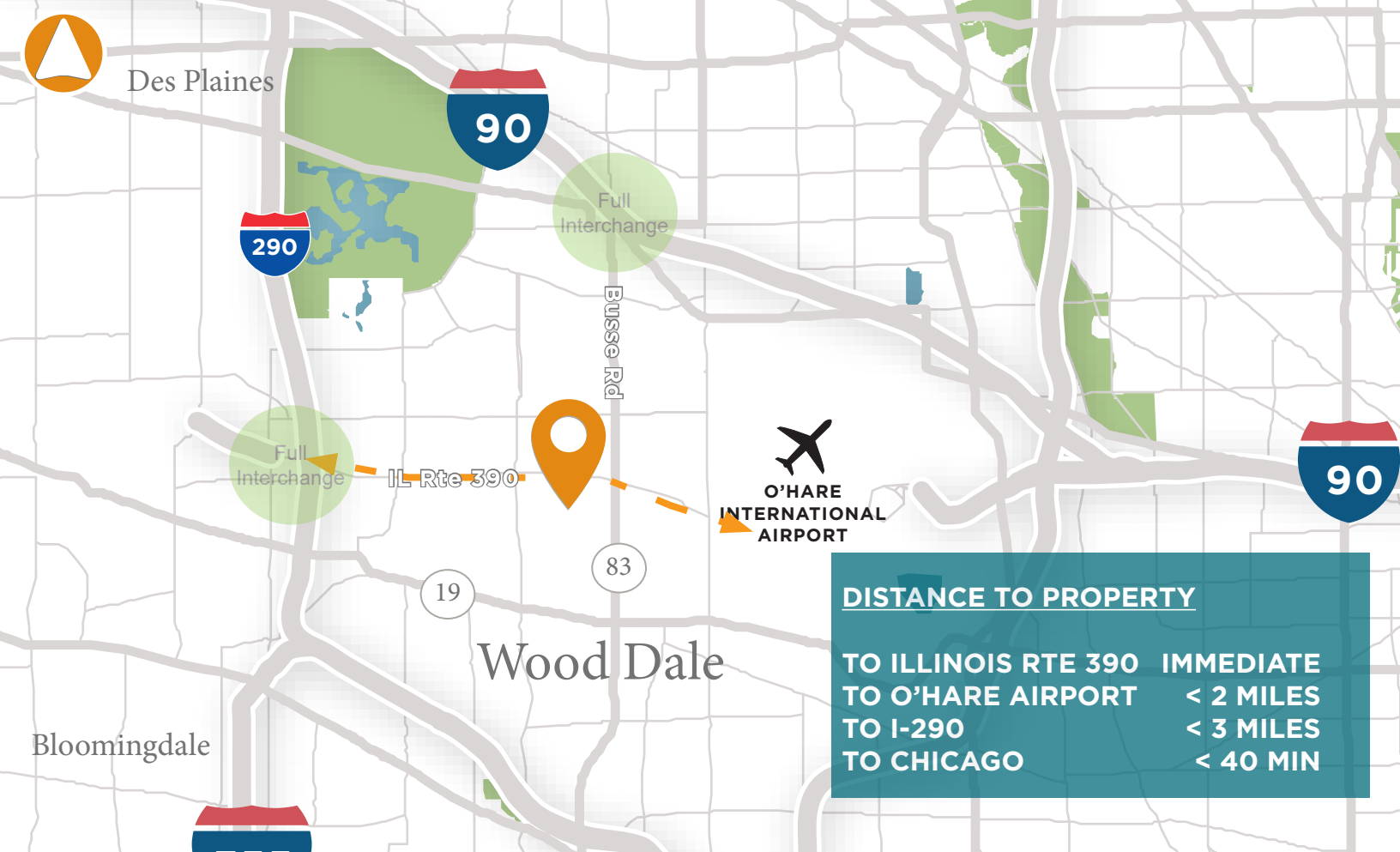
**Lauren Lee**  
Mapletree Investments  
562 477 5100  
lauren.lee@mapetree.com.sg

Leased By

**CUSHMAN & WAKEFIELD**

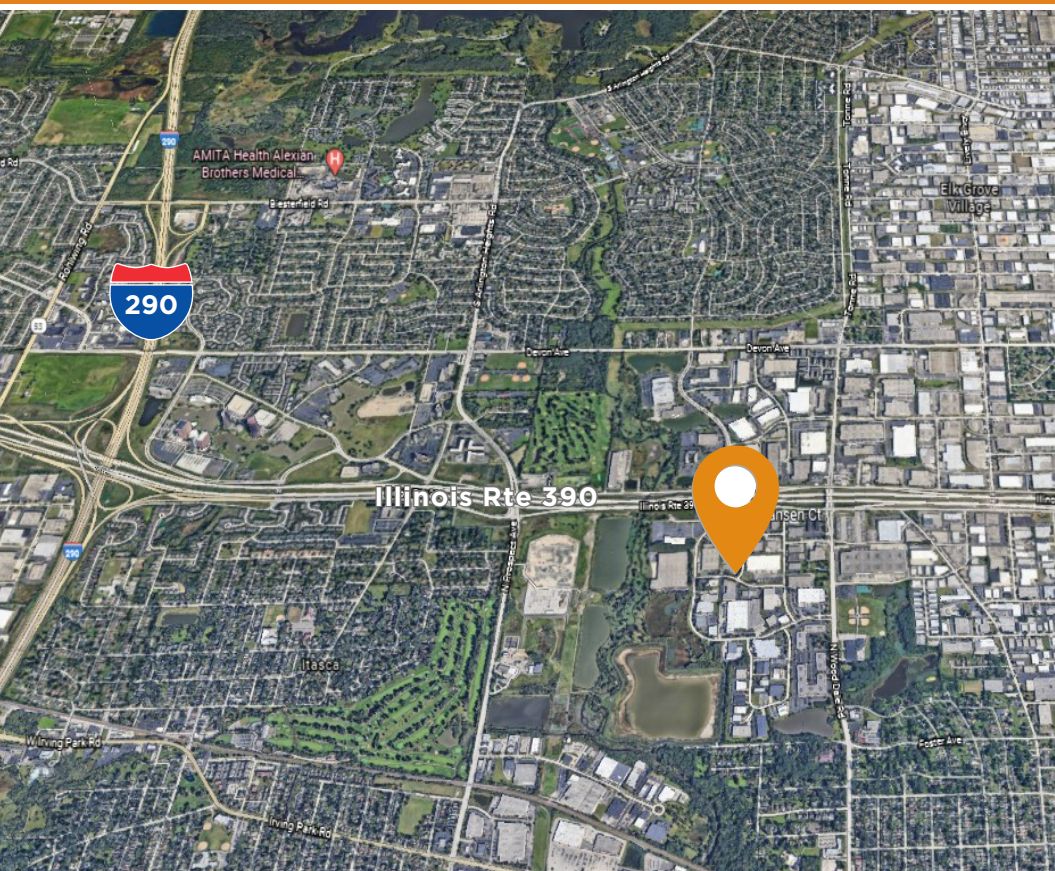
**Jeff Matella**  
Director  
847 720 1349  
jeff.matella@cushwake.com

**Michael Labek**  
Senior Associate  
312 470 2309  
michael.labek@cushwake.com



#### DISTANCE TO PROPERTY

TO ILLINOIS RTE 390	IMMEDIATE
TO O'HARE AIRPORT	< 2 MILES
TO I-290	< 3 MILES
TO CHICAGO	< 40 MIN



#### Strategic Location

201 Hansen Court, Wood Dale provides access to major highways and expressways. Conveniently located within minutes of I-290 and O'Hare International Airport.

#### About Us

Mapletree is a leading global real estate developer, investor and manager headquartered in Singapore. Mapletree owns and manages more than 69 million square feet of logistics and industrial properties across 26 states with offices in New York, Chicago, Atlanta, Dallas and Los Angeles.

[www.mapletree.com.sg](http://www.mapletree.com.sg)

Owned By

**mapletree**

**Lauren Lee**  
Mapletree Investments  
562 477 5100  
[lauren.lee@mapletree.com.sg](mailto:lauren.lee@mapletree.com.sg)

Leased By

**CUSHMAN & WAKEFIELD**

**Jeff Matella**  
Director  
847 720 1349  
[jeff.matella@cushwake.com](mailto:jeff.matella@cushwake.com)

**Michael Labek**  
Senior Associate  
312 470 2309  
[michael.labek@cushwake.com](mailto:michael.labek@cushwake.com)