

FOR LEASE | AVAILABLE IMMEDIATELY
±24,000 SF REMAINING IN PARK



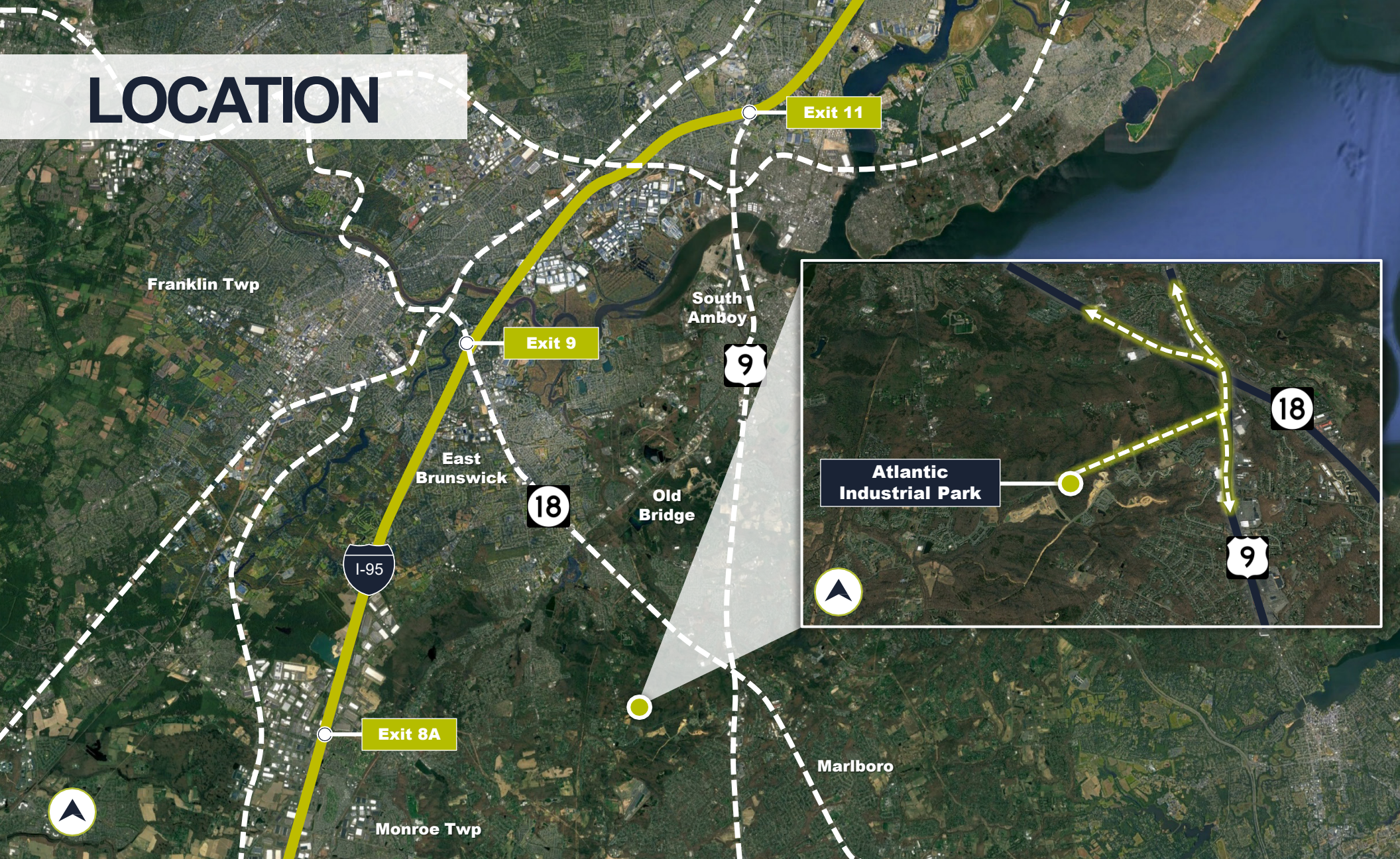
ATLANTIC INDUSTRIAL PARK

410 TEXAS ROAD, OLD BRIDGE, NJ

NEW CONSTRUCTION • CLOSE PROXIMITY TO MAJOR HIGHWAYS



LOCATION



2 MILES
TO ROUTE 18

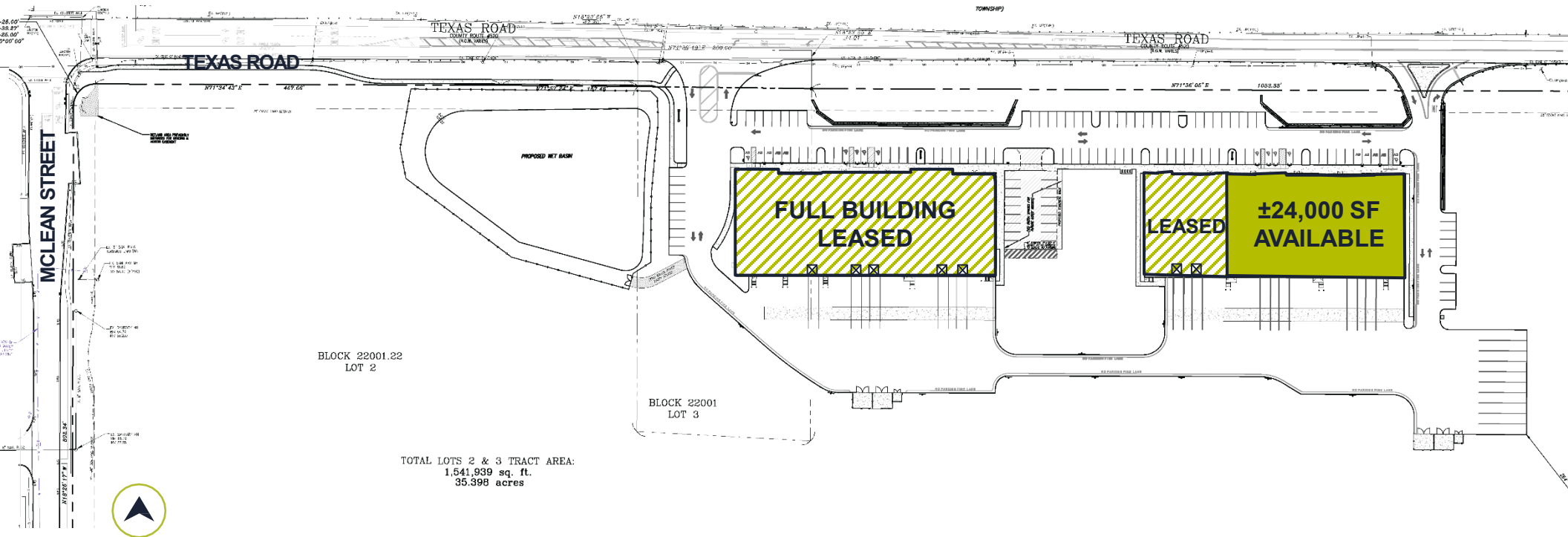
2 MILES
TO ROUTE 9

7 MILES
TO NJ TPKE EXIT 8A

10 MILES
TO NJ TPKE EXIT 9

SITE PLAN & SPECIFICATIONS

ATLANTIC INDUSTRIAL PARK | 410 TEXAS ROAD, OLD BRIDGE



Building Size: 36,000 SF

Loading: 4 Docks

Available Size: ±24,000 SF

Building Dimensions: 300' x 120'

Office Area: To Suit

Taxes: TBD

Clear Height: 32'

Available: Immediately



CONTACT INFORMATION

STAN DANZIG

Stan.Danzig@cushwake.com
+1 201 460 3388

ERIC SCHLETT

Eric.Schlett@cushwake.com
+1 551 804 4747

KIMBERLY BACH

Kimberly.Bach@cushwake.com
+1 732 403 7714

