

**LEGAL DESCRIPTION**

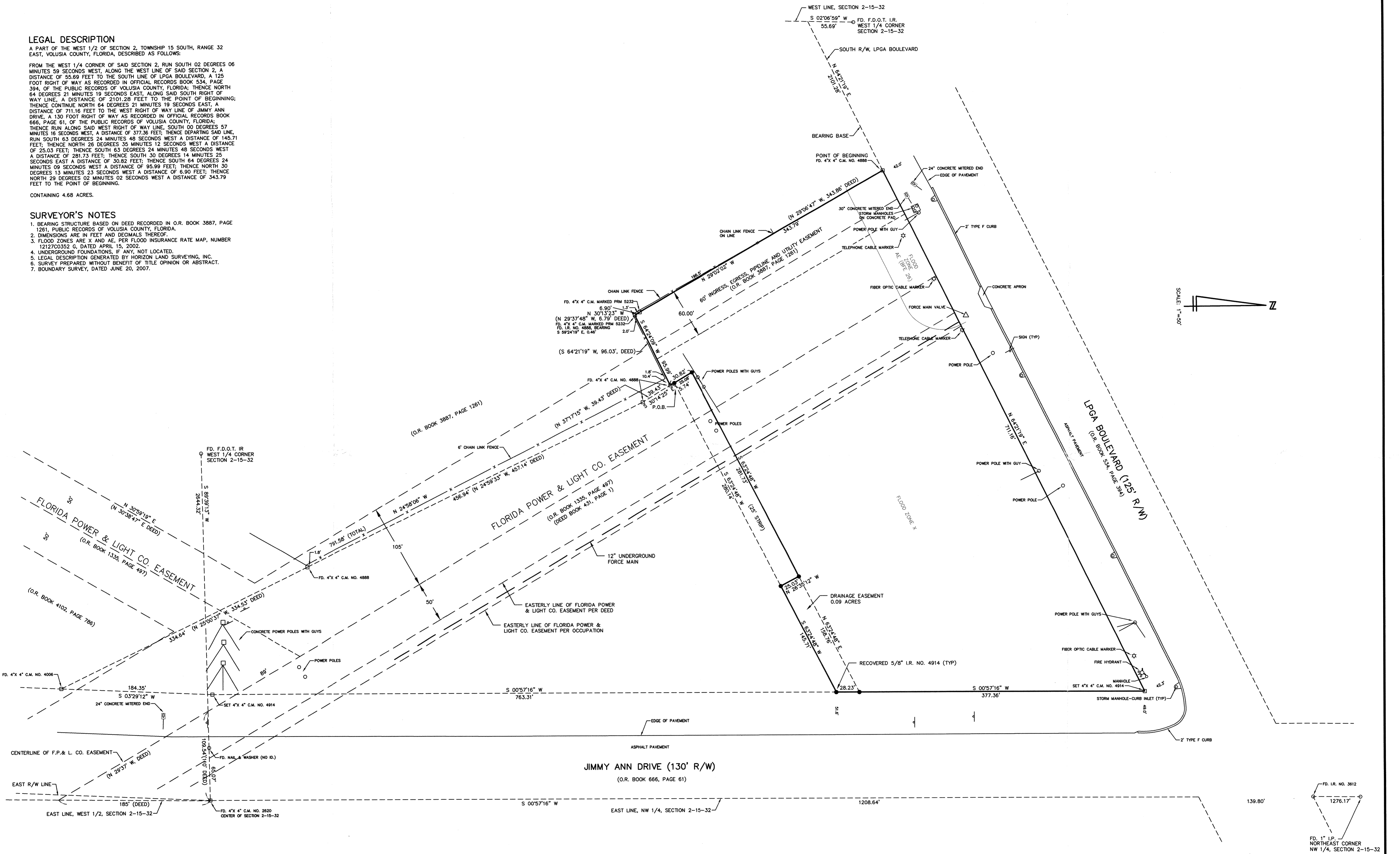
A PART OF THE WEST 1/2 OF SECTION 2, TOWNSHIP 15 SOUTH, RANGE 32 EAST, VOLUSIA COUNTY, FLORIDA, DESCRIBED AS FOLLOWS:

FROM THE WEST 1/4 CORNER OF SAID SECTION 2, RUN SOUTH 02 DEGREES 02 MINUTES 59 SECONDS WEST, ALONG THE WEST LINE OF SAID SECTION 2, A DISTANCE OF 55.69 FEET TO THE SOUTH LINE OF LPGA BOULEVARD, A 125 FOOT RIGHT OF WAY AS RECORDED IN OFFICIAL RECORDS BOOK 534, PAGE 394, OF THE PUBLIC RECORDS OF VOLUSIA COUNTY, FLORIDA; THENCE NORTH 64 DEGREES 21 MINUTES 19 SECONDS EAST, ALONG SAID SOUTH RIGHT OF WAY LINE, A DISTANCE OF 2101.28 FEET TO THE POINT OF BEGINNING; THENCE CONTINUE NORTH 64 DEGREES 21 MINUTES 19 SECONDS EAST, A DISTANCE OF 711.16 FEET TO THE WEST RIGHT OF WAY LINE OF JIMMY ANN DRIVE, A 130 FOOT RIGHT OF WAY AS RECORDED IN OFFICIAL RECORDS BOOK 666, PAGE 61, OF THE PUBLIC RECORDS OF VOLUSIA COUNTY, FLORIDA; THENCE RUN ALONG SAID WEST RIGHT OF WAY LINE, SOUTH 00 DEGREES 57 MINUTES 16 SECONDS WEST, A DISTANCE OF 377.36 FEET; THENCE DEPARTING SAID LINE, RUN SOUTH 63 DEGREES 24 MINUTES 48 SECONDS WEST A DISTANCE OF 145.71 FEET; THENCE NORTH 26 DEGREES 35 MINUTES 12 SECONDS WEST A DISTANCE OF 25.03 FEET; THENCE SOUTH 63 DEGREES 24 MINUTES 48 SECONDS WEST A DISTANCE OF 281.73 FEET; THENCE SOUTH 30 DEGREES 14 MINUTES 25 SECONDS EAST A DISTANCE OF 30.82 FEET; THENCE SOUTH 64 DEGREES 24 MINUTES 09 SECONDS WEST A DISTANCE OF 95.99 FEET; THENCE NORTH 30 DEGREES 13 MINUTES 23 SECONDS WEST A DISTANCE OF 6.90 FEET; THENCE NORTH 29 DEGREES 02 MINUTES 02 SECONDS WEST A DISTANCE OF 343.79 FEET TO THE POINT OF BEGINNING.

CONTAINING 4.68 ACRES.

**SURVEYOR'S NOTES**

1. BEARING STRUCTURE BASED ON DEED RECORDED IN O.R. BOOK 3887, PAGE 1281, PUBLIC RECORDS OF VOLUSIA COUNTY, FLORIDA.
2. DIMENSIONS ARE IN FEET AND DECIMALS THEREOF.
3. FLOOD ZONES ARE X AND AE, PER FLOOD INSURANCE RATE MAP, NUMBER 12127C0352 G, DATED APRIL 15, 2002.
4. UNDERGROUND FOUNDATIONS, IF ANY, NOT LOCATED.
5. LEGAL DESCRIPTION GENERATED BY HORIZON LAND SURVEYING, INC.
6. SURVEY PREPARED WITHOUT BENEFIT OF TITLE OPINION OR ABSTRACT.
7. BOUNDARY SURVEY, DATED JUNE 20, 2007.



<p><b>LEGEND</b></p> <p>Δ = CENTRAL ANGLE R = RADIUS L = ARC LENGTH T = TANGENT C = CHORD CB = CHORD BEARING</p> <p>R/W = RIGHT OF WAY (R) = RADIAL (NR) = NON-RADIAL PC = POINT OF CURVATURE PC = POINT OF CURVATURE</p> <p>PT = POINT OF TANGENCY PCC = POINT OF COMPOUND CURVATURE POC = POINT ON CURVE FD = FOUND C.M. = CONCRETE MONUMENT</p> <p>I.P. = IRON PIPE I.R. = IRON ROD P.R.M. = PERMANENT REFERENCE MONUMENT P.C.P. = PERMANENT CONTROL POINT</p> <p>O.R. = OFFICIAL RECORDS N &amp; W = NAIL AND WASHER U.S. = UNITED STATES NO. = NUMBER INV. = INVERT EL. = ELEVATION</p> <p>( ) = RECORD DIMENSION N.G.V.D. = NATIONAL GEODETIC VERTICAL DATUM FFE = FINISHED FLOOR ELEVATION CMP = CORRUGATED METAL PIPE RCP = REINFORCED CONCRETE PIPE</p> <p>N = NORTH S = SOUTH E = EAST W = WEST ° = DEGREES ' = MINUTES (IN A BEARING) "/ = SECONDS (IN A BEARING) " = FEET (IN A DISTANCE) " = INCHES (IN A DISTANCE) AC = ACRES ± = MORE OR LESS (OR PLUS OR MINUS) A/C = AIR CONDITIONER</p> <p>P.O.B. = POINT OF BEGINNING P.L.S. = PROFESSIONAL LAND SURVEYOR F.S. = FLORIDA STATUTES F.A.C. = FLORIDA ADMINISTRATIVE CODE F.D.O.T. = FLORIDA DEPARTMENT OF TRANSPORTATION S.R. = STATE ROAD</p>	<p><b>BOUNDARY SURVEY</b></p> <p>DRAWN BY: KJ CHECKED BY: KRJ</p> <p>DATE: 6-20-07 SCALE: 1"=50' FIELD BOOK / PAGE: LP/DC</p>	<p><b>HORIZON LAND SURVEYING, INC.</b></p> <p>1404 WILLARD STREET NEW SMYRNA BEACH, FL 32088 386-776-0066</p>	<p>NOT VALID UNLESS SIGNED AND SEALED WITH EMBOSSED SEAL</p> <p>I HEREBY CERTIFY THIS SURVEY DRAWING TO BE CORRECT, TO THE BEST OF MY KNOWLEDGE AND BELIEF, AND COMPLIES IN FORM WITH THE MINIMUM TECHNICAL STANDARDS SET FORTH BY THE FLORIDA BOARD OF PROFESSIONAL SURVEYORS AND MAPPERS IN CHAPTER 61B1-8, F.A.C. PURSUANT TO SECTION 472.027, FLORIDA STATUTES.</p> <p>KENNETH R. JONES, P.L.S., NQ, 4914</p>	<p>PROJECT NO. 20129 FILE: DBMSVY SHEET 1 OF 1</p>
---	---	---	---	--