

4 PAD SITES AVAILABLE ALONG NORTH MERIDIAN

Meridian & 53rd St. North SW/c, Wichita, KS 67204



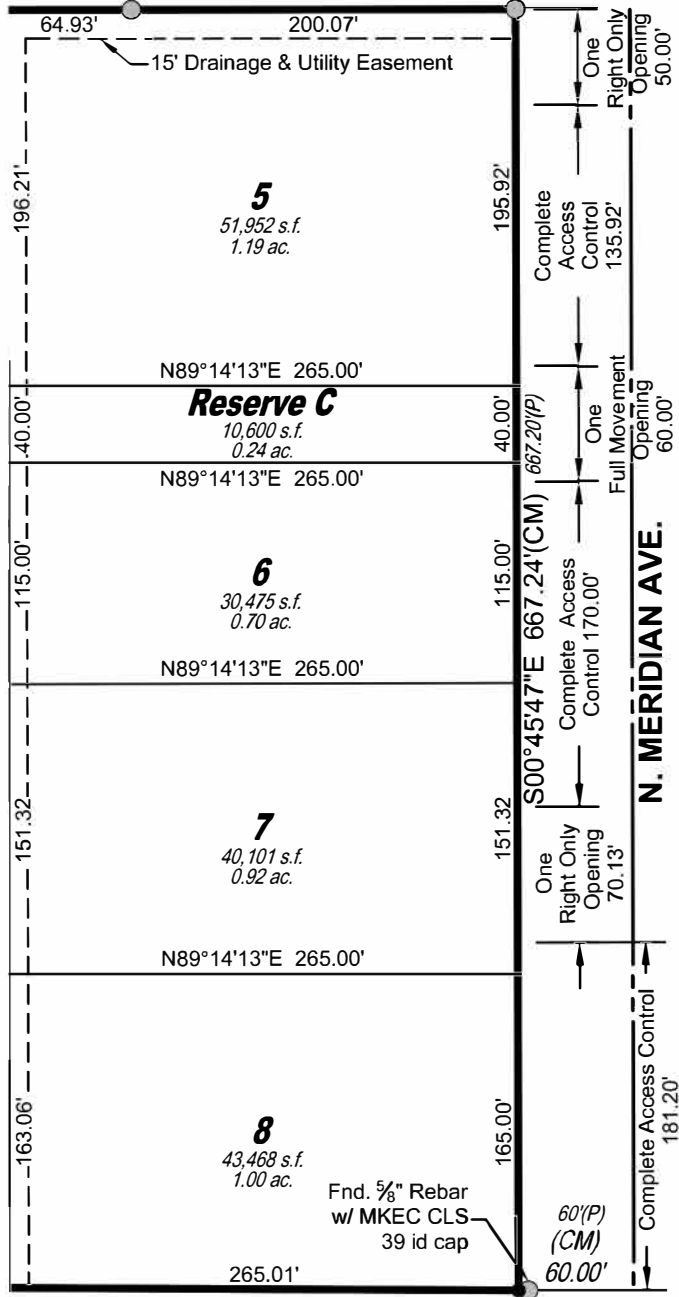
Offered exclusively by:

Christi Royse, CCIM
316-292-3919 | croyse@weigand.com

Lee Cole
316-292-3936 | lcole@weigand.com

4 PAD SITES AVAILABLE ALONG NORTH MERIDIAN

Meridian & 53rd St. North SW/c, Wichita, KS 67204



PROPERTY HIGHLIGHTS

- Located in a growing market with several large residential developments close by.
- Located Adjacent to Neighboring Tenants Including: Taco Bell, Dollar Tree, Braum's, Urgent Care, and more.
- Frontage directly across from Walmart's main entrance, which is a proposed signalized intersection.

DEMOGRAPHICS	3 MILES	5 MILES	7 MILES
MEDIAN AGE	41.9	37.6	36.3
POPULATION	14,035	67,377	178,478
AVG. HH. INCOME	\$104,294	\$98,213	\$85,748

TRAFFIC COUNTS		
ALONG MERIDIAN AVE.		12,202 VPD
ALONG 53RD ST.		7,559 VPD



Offered exclusively by:

Christi Royse, CCIM
316-292-3919 | croyse@weigand.com

Lee Cole
316-292-3936 | lcole@weigand.com

4 PAD SITES AVAILABLE ALONG NORTH MERIDIAN

Meridian & 53rd St. North SW/c, Wichita, KS 67204



Offered exclusively by:

Christi Royse, CCIM

316-292-3919 | croyse@weigand.com

Lee Cole

316-292-3936 | lcole@weigand.com